

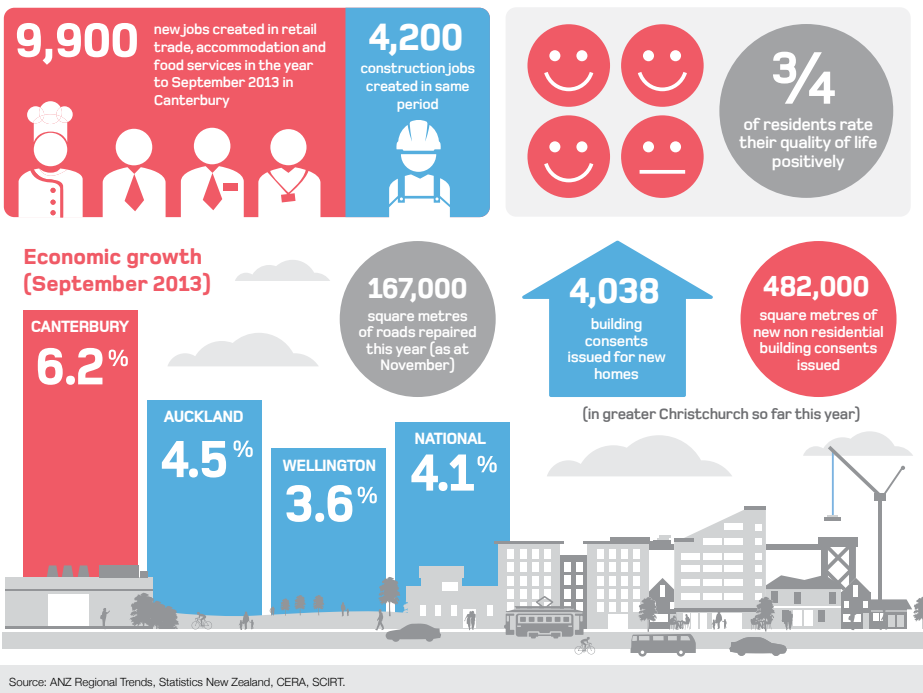


G R E A T E R C H R I S T C H U R C H Recovery Update

ISSUE 28

DECEMBER 2013

Canterbury 2013: The year that was



Now that year three of earthquake recovery is behind us, it's a good time to reflect on the positive things we achieved in the greater Christchurch community in 2013. Earthquake recovery is a long and, at times challenging, road. We recently saw how the All Blacks on their end of year tour kept faith in themselves and their abilities to claim a seemingly impossible victory over Ireland. This inspired me and made me think how much strength and resolve we need here as a community to make this recovery happen and how many wonderful people are keeping the faith in our region.

In this Update, you will read about examples of the vast amount of earthquake recovery work that has been done this year. Some of that work still involves planning and understanding the big picture – which has to be done long before any sods are turned in the ground. We want to get the recovery right and build a strong, resilient, amazing

place. Much physical work is also underway. Commercial building is going strong in the central city and beyond and CERA'S Christchurch Central Development Unit is forging ahead with key anchor projects. As we all know only too well, the Stronger Christchurch Infrastructure Rebuild Team (SCIRT) has also moved its repair programme up a big notch.

I am delighted also that Christchurch has just been selected to join the 100 Resilient Cities Network by The Rockefeller Foundation. The Foundation recognised the work that's been done and that "our city will be able to better prepare for, withstand, and bounce back more effectively in the face of shocks, stresses and other vulnerabilities."

Bear with us. Know that support and assistance are available and the progress is real.

CERA Chief Executive Roger Sutton ★

What excites you about future Christchurch?

Here's what some of the greater Christchurch residents shared at the recent A & P Show:



CERA
Canterbury Earthquake
Recovery Authority
Te Mana Haumanu ki Waitaha

Recovery snapshot
by the numbers

page 2 and 3

Seismic update
from GNS

page 7

Long-serving volunteers
reach out to the community

page 11



Hon Gerry Brownlee
Minister for Canterbury Earthquake Recovery

It seems amazing to me that we have already come to the end of 2013 and year three of earthquake recovery in greater Christchurch.

We've heard much that the third year after a disaster can be the hardest and I know it has been a mixed year within our community. My commitment as Minister for Canterbury Earthquake Recovery remains as it ever was, to see people in the greater Christchurch community get back on their feet as soon as possible and become part of the positive energy force that will drive us through this recovery.

It's heartened me in recent weeks to see some of the hard work that's gone into elements of the recovery come to fruition. The approval of the Land Use Recovery Plan (LURP) on 6 December was a major milestone. The LURP puts land use policies and rules in place to help rebuild greater Christchurch and will, no doubt, go a long way towards easing housing pressures and speeding up residential growth.

The Port Hills zoning review announcement I know was tough on some. I am only too aware it was a long and frustrating wait for Port Hills property owners. Unfortunately, some of the delay was outside our control while we awaited the outcome of the Quake Outcasts legal challenge. At least now, the affected residents have certainty over the status of their properties and can start to move on with their lives. As the Port Hills land zoning announcement is the last, we can also now draw a line under two and half years of zoning decisions.

The Canterbury economy is going from strength to strength and the recovery is predicted to really gain momentum in 2014. When you look at some of the data we've put together in this Update in terms of employment, growth and consenting, the signs are all positive.

I was recently asked about my vision for greater Christchurch and I see sport and recreation at the heart of that. We have the opportunity to create a new identity for ourselves and think about how people will see us in the future. Christchurch will always be the garden city, the gateway to the South Island and Antarctica but I think the extraordinary sporting record of Canterbury gives us an opportunity to claim the title of sporting capital of New Zealand. To that end, we have wonderful new facilities planned for the central city in the form of the Metro Sports Facility and the Stadium which are included in the Christchurch Central Recovery Plan, along with the Hagley Cricket Oval where we will be able to host games at the Cricket World Cup in 2015. I am sure there will be more progress reports on these anchor projects in the months to come.

Last but not least, I wish you all well for the holiday season and look forward to even more progress in earthquake recovery in 2014.

The big picture - what is the plan?

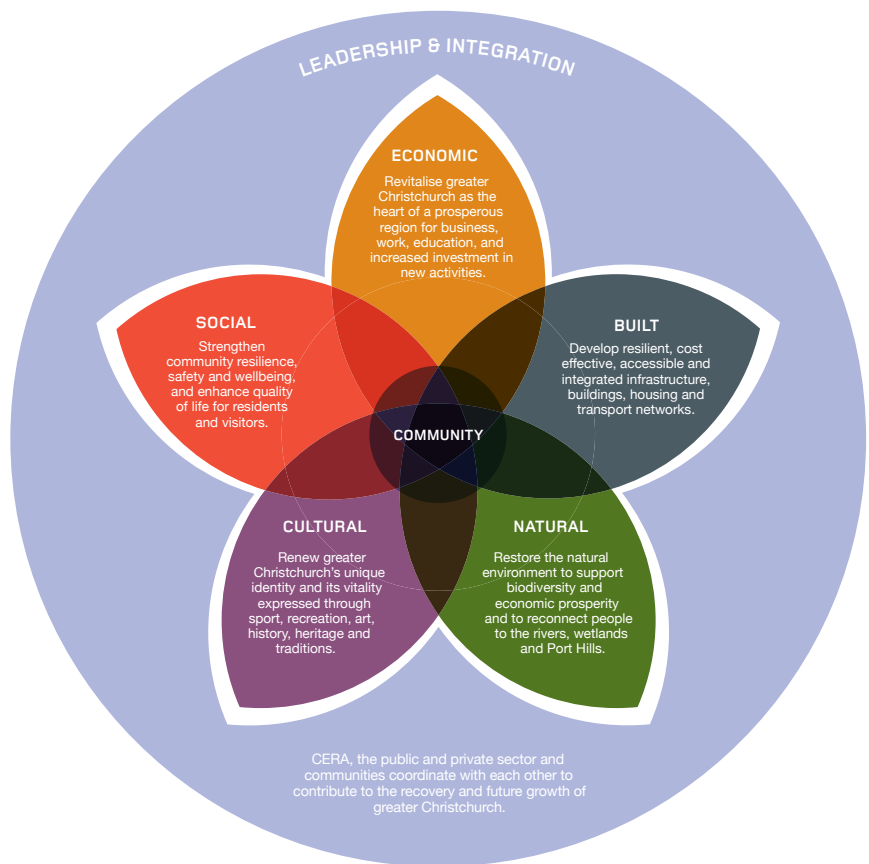
An over-arching document has been created to drive the recovery of greater Christchurch after the earthquakes of 2010 and 2011. It is called the Recovery Strategy.

The Recovery Strategy provides a vision, goals and a road map for ensuring the success of greater Christchurch in its recovery.

The numerous aspects of the Strategy are represented in the diagram (seen below) and are reflected in the range of graphics on these pages. Here you can see a snapshot of how the many elements of the recovery feature in our daily lives. That is, how we interact as a community, support each other and gather together; also how organisations, businesses and individuals in our region are working to make the recovery happen.

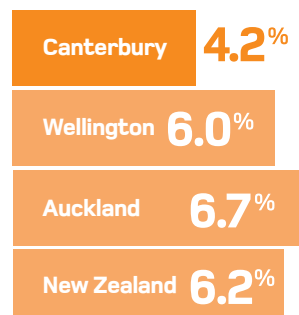
CERA and Minister for Canterbury Earthquake Recovery Gerry Brownlee in their leadership roles in the recovery also require good quality information about what is happening. CERA carries out extensive monitoring to help guide its decision-making and tries to make as much information as possible available to the public on the recovery. Until recently, CERA published a Canterbury Economic Recovery dashboard on its website each month. This activity has now been transitioned to the Canterbury Development Corporation (CDC) which will include the recovery indicators in its quarterly economic report. That can be found at www.cdc.org.nz/economic-data from February 2014. In the New Year, CERA's monitoring and reporting team will start to publish a new webpage providing a monthly snapshot of the recovery. Look out for that and other recovery updates at: www.cera.govt.nz

Recovery Strategy



ECONOMIC

Unemployment rates (as at September 2013)



The total value of exports going through Lyttelton Port increased 15% in the year to August 2013.



● Value of construction activity underway:

\$820 million worth of building activity underway in Canterbury at the moment. Canterbury accounts for 25% of the building work underway in New Zealand at the moment. Before the earthquakes, it generally accounted for only 13%.

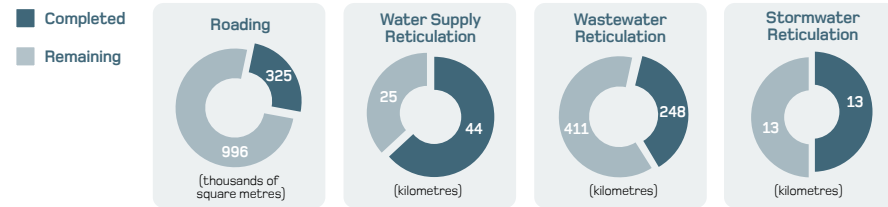
*Source: Statistics New Zealand (September 2013)

BUILT

- **Building consents total value**
More than \$5.5 billion worth of building consents have been issued in greater Christchurch since the September 2010 earthquake. \$2.1 billion of this was issued during 2013 alone.
- **Ready-mixed concrete**
Since 2010, 1,947,000m³ of ready mixed concrete has been poured in Canterbury (18% of the New Zealand total for the period).
- As at September 2013, the volumes of concrete poured in Canterbury are now at the highest level on record.

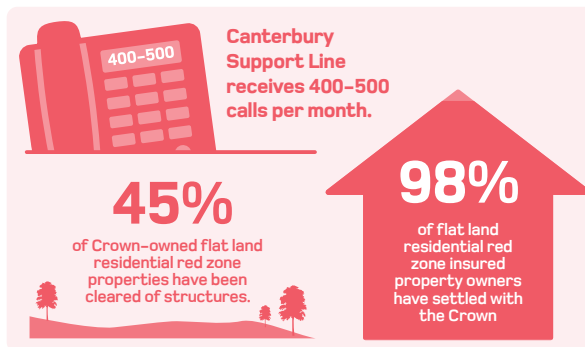
Source: Statistics New Zealand (September and October 2013)

SCIRT progress



SOCIAL

- **Avondale Earthquake Assistance Centre:** 13,293 appointments since it was established.
- **Kaiapoi Earthquake Hub:** More than 4,300 enquiries/appointments since it was established.
- **Earthquake Support Coordination Service:** has almost 2,000 open cases, and has helped more than 8,400 households since it was established.
- **Temporary accommodation villages:** Kaiapoi Village, Linwood Village, Rawhiti Village and Ringers Park have had 496 households through to-date.



NATURAL

Environment Canterbury and other recovery partners worked on two major works of planning in 2013 in the natural sphere: NERP and LURP.

NERP

The Natural Environment Recovery Programme (NERP) was designed to facilitate the restoration and enhancement of the natural environment, and capture opportunities to build future resilience.

LURP

The Land Use Recovery Plan (LURP) provides a framework for rebuilding and future development, identifying land use areas and priorities. It addresses the short and medium-term needs for housing and business, reviewing the existing planning and policy framework and ensuring land use changes support an efficient and effective recovery.

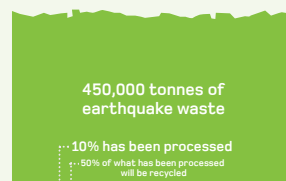
Walking Tracks



Christchurch City Council (November 2013)

Waste

- Burwood Resource Recovery Park has received approximately 450,000 tonnes of earthquake waste, 10% of which has been processed.
- Of this, approximately 50% will be recycled.



Source: Burwood Resource Recovery Park (November 2013)

CULTURAL

- The majority of community facilities in greater Christchurch are open and available for use.
- Significant hotels and tourist attractions re-opened including the Heritage Hotel in Cathedral Square, the Christchurch Gondola and Christchurch Tram.



To date, the Christchurch Earthquake Appeal Trust granted almost \$42 million combined for sport and recreation, and heritage and culture in greater Christchurch.



There were record pre-sales for November's Cup and Show Week events. Highlights included 18,100 people attending Riccarton Races for Cup Day and 22,100 attending the Addington Races for Trotting Cup Day.



Roger Sutton
CERA Chief Executive

We are nearly into the Christmas break, a period of the year that we all look forward to, particularly after another very full and busy year. I am very aware though that recent holiday periods have been hard for those of you badly affected by the Canterbury earthquakes and still waiting for your property issues to be resolved. While the rate of over-cap rebuilding is now four times faster than it was at this time last year, the residential rebuild is still painfully slow and needs to go faster. Please be assured that we continue to work closely with all agencies involved in this process as we are as concerned as you that the pace of recovery continues. And as you will know from earlier Recovery Updates, we have also set up services such as the Residential Advisory Service and the Make it Right campaign to provide you with practical assistance to move forward.

At CERA, we also keep a close eye on the impact that the Canterbury earthquakes continue to have on your wellbeing. We are keen to know how the recovery process is going for you, what is working and what isn't and we have used the Wellbeing Survey as a guide for focusing on what we need to keep doing and what new steps we should be taking.

I am pleased to see that recent survey results, when compared to earlier surveys, show the overall personal impact of the earthquakes has lessened, particularly around the levels of stress and anxiety related to aftershocks. However, this survey data also shows us that the recovery is slower for those still affected by the stress that transport, housing-related decisions and insurance can have.

We also keep a close eye on the Canterbury seismicity updates and as you will have seen from the GNS information in this Update, seismic activity has now reduced considerably. Yes, we still have those sharp little reminders of the continuing seismic activity that goes with the pattern of aftershocks but we also know that as time passes, the probabilities of significant earthquake activity decreases.

These results and the information we receive on the overall recovery of the greater Christchurch area help us to set clear tasks for our work programme. In 2014 you will see substantial progress around the city with major rebuilding projects underway (including the Justice and Emergency Services Precinct, the Convention Centre Precinct and the Margaret Mahy Amazing Place Playground), more community facilities repaired and re-opened (including the Bridge of Remembrance), land zoning completed and flat land residential red zones cleared. I will also be closely monitoring the repair and rebuilding of residential properties to ensure that significant progress is made here.

Wishing you all the best for the holiday season. 🍷

Roger Sutton

CCDU – driving ahead with the central city rebuild



Earlier this year, Minister for Canterbury Earthquake Recovery Gerry Brownlee announced the renaming of the Christchurch central city red zone as the 'rebuild zone'. CERA's Christchurch Central Development Unit (CCDU), along with the Christchurch City Council, is leading the redevelopment of the rebuild zone after the devastating earthquakes of 2010 and 2011.

CCDU Director Warwick Isaacs says progress is evident in every corner of the central city where numerous commercial builds are underway or complete; but not all progress is visible.

"One of the major achievements in 2013 in the recovery of the central city was the June signing of the cost-sharing agreement in which the Crown and Christchurch City Council agreed to the allocation of recovery costs. We are talking about an investment of \$2.9 billion from the Crown and \$1.9 billion from Christchurch City Council for the anchor projects in the Christchurch Central Recovery Plan, and the repair and replacement of the city's essential horizontal infrastructure.

"The significance of that agreement can't be overstated. It provided certainty to all as to who was going to pay for and lead vital projects," says Mr Isaacs.

Anchor project progress snapshot 2013:

- 1) Te Papa Ōtākaro/Avon River Precinct. Opening of Watermark - the first section of the precinct (August 2013). The Terraces - next stage unveiled (September 2013).
- 2) Justice and Emergency Services Precinct. Design and timelines released (October 2013).
- 3) Release of updated anchor project timelines (August/September 2013) and an interactive map tracking progress within the Christchurch central city (<http://progressmap.ccdugovt.nz>).
- 4) Release of Accessible City Transport Plan (October 2013).

In addition, CCDU's BNZ Amazing Place playground and project competitions have been hugely successful with Canterbury's young people. Over 7,000 children took part and close to 360 entries were received. The BNZ Amazing Place exhibition was crowned the supreme champion trade exhibitor of the year at the 151st Canterbury A&P Show. The exhibition will continue to be displayed throughout greater Christchurch over the coming months.

A Christchurch building company and an award-winning Italian architecture firm were named as the winner of the Breathe – New Urban Village design competition. That will see the construction of a village including 72 timber-clad dwellings combining medium rise apartment blocks with two- and three-storey housing in the central city.

Two sites of significance were also purchased by the Crown in 2013. The CTV site was purchased in July 2013. The building collapsed in the February earthquake claiming the lives of 115 people. The site of the former PGC building where 18 people lost their lives was purchased in September 2013. The future of the two sensitive sites is yet to be decided.

What's in store for 2014?

Convention Centre Precinct

Proposals from both prospective operators and design/development consortia are due back to CCDU in March 2014 for evaluation. The successful respondents will then be able to start the master planning and development stage of the project. The land acquisition process is well underway, with more demolition set to start in the first months of next year. The aim is to have the site completely cleared by August.

Bus Interchange

Concept design is now underway, with multiple options being refined. A preferred option is expected before Christmas (2013).

The key task early next year will be to develop the detailed design plans of the facility, so that early works can get underway in the second quarter of 2014. Main construction will begin by the third quarter of the year with the potential for hotel, residential accommodation, retail, food and beverage, and entertainment and leisure facilities, all being included in the final development.

East Frame and North Frame

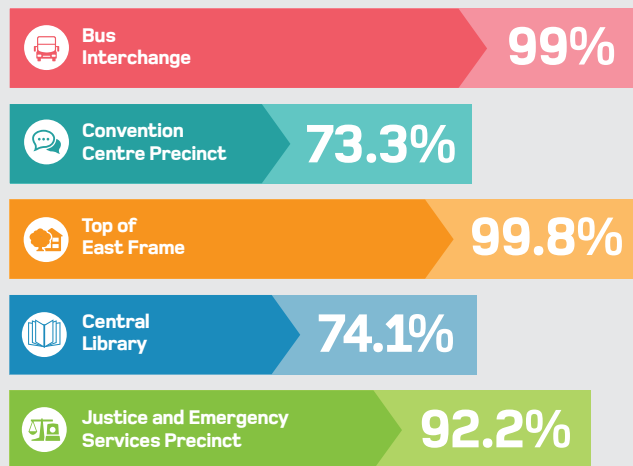
The East and North frames provide the opportunity for people to live within a new residential community located in the heart of the city. Construction will begin for some areas near the end of next year. Within an 11.7 hectare area we will have the world's best family playground, new transport links, rebuilt infrastructure, public space in central park, all of which is right next door to Te Papa Ōtākaro/Avon River Precinct. At least 700 dwellings housing more than 1,500 occupants in a mix of townhouses and apartments are planned, with a raft of public areas in between.

Metro Sports Facility

The design consultants will be getting their master plan underway early next year working in conjunction with the business case which is in development. The overall concept will be tapping into the hopes recently voiced by Minister Gerry Brownlee of making Canterbury one of New Zealand's more successful sporting regions with the best facilities. 🏆

Land purchase progress (as at end of November 2013)

- Agreements in place for purchase/acquisition of 60.5 per cent of land area designated for anchor projects



Building consents for the central city

68,609

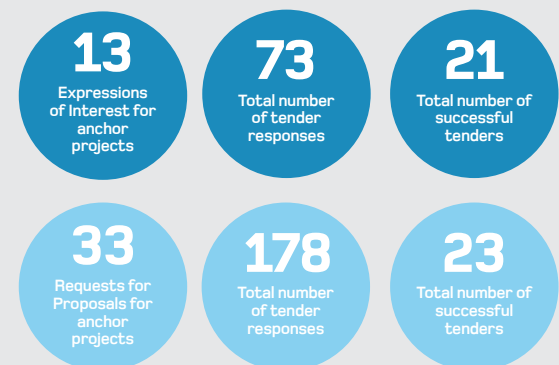
square metres of commercial building consents have been issued within the CBD so far this year

\$150 million

worth of building consents have been issued in CBD so far this year (including residential building consents)

Source: Statistics New Zealand and CERA (September 2013)

To-date CCDU has issued:



Avondale earthquake hub to close

The earthquake assistance centre that has operated in Avondale since August 2011 will be closing permanently on Friday 20 December 2013.

The Avondale Earthquake Assistance Centre (EAC) has been available as a place for face-to-face meetings with key recovery agencies including Christchurch City Council, CERA, EQC and other insurers.

Since it opened, almost 13,300 appointments have been made at the centre, however demand has reduced. There has been a 50 per cent decrease in appointments by residents since the middle of 2012.

CERA Manager Community and Customer Services Manager Melissa Paton says all the agencies involved in the Avondale EAC have made a commitment to continue to engage with residents face to face. Where appropriate, they will also take part in multi-party meetings with other agencies, across greater Christchurch.

Melissa Paton says although the hub's physical premises will be closed, CERA is still facilitating earthquake recovery for residents.

"Residents with enquiries around their rebuild or repair situation or other earthquake-related matters should still feel free to email info@cera.govt.nz or call CERA on **0800 RING CERA (0800 7464 2372)**.



The face of the Avondale EAC, Janet Bramham has guided residents through their experience at the hub since day one.

"People with concerns about their welfare or the welfare of others can call the Canterbury Support Line **(0800 777 846)**."

The Kaiapoi Earthquake Hub remains open.

EQC customers are invited to book an appointment with a member of its Community Contact Team by calling **0800 326 243**.

Housing issues to ease under new land use plan

The Land Use Recovery Plan (LURP) has been approved by the Minister for Canterbury Earthquake Recovery Gerry Brownlee.

Minister Brownlee says the creation of the LURP, which provides a framework for rebuilding and identifies land use areas and priorities, will go a long way towards easing housing pressures in greater Christchurch.

"As many as 40,000 residential sections could be developed by 2028 within the greenfield priority areas under these revised rules. The aim is to use amended intensification rules to deliver 8,000 to 10,000 new dwellings in Christchurch city within the next five years," says Minister Brownlee.

The plan will do four things:

- Help address housing supply issues in greater Christchurch.
- Support business and industry recovery through zoning and land supply.
- Lower development hurdles and speed recovery.
- Clarify where and when development will occur.

The plan was approved by the Minister on 6 December 2013.

LURP was developed by Environment Canterbury, working with Christchurch City Council, Selwyn District and Waimakariri District Councils, and Te Rūnanga o Ngāi Tahu; and the New Zealand Transport Agency (NZTA) and CERA, with further input from a wide range of interested individuals, organisations and groups.

For more information about the LURP, go to: www.cera.govt.nz/lurp

Support available as January 2014 final flat land settlement date nears

Earlier this year, the CERA Chief Executive granted case-by-case extensions to settlement dates for property owners in the flat land residential red zone who met specific criteria, including vulnerability. The final date for these settlements is 31 January 2014, as agreed by the Minister for Canterbury Earthquake Recovery.

CERA staff are working with these property owners, providing assistance with alternative accommodation, practical help to move on from the residential red zone,

and links to key support services like the Earthquake Support Coordination Service. This is helping CERA to better understand the barriers property owners are facing to settlement, so that it can determine what sort of help can be provided.

Residential red zone property owners who are due to settle by 31 January 2014 are encouraged to contact CERA's Community and Customer Services Team on **(03) 354 2600** to discuss what assistance can be provided to help them progress to settlement.

Details of Port Hills zoning review announced

The outcome of the Port Hills zoning review announced earlier this month, means a change of zoning for 270 properties – with 237 going from green zone to red zone, and 33 going from red to green.

Zoning in the Port Hills is based on life risk from rock roll or cliff collapse. Owners of eligible properties in the residential red zone may decide to accept a Crown offer to purchase the affected properties.

Minister for Canterbury Earthquake Recovery Gerry Brownlee says the decision will give property owners

certainty and provide options for people to move on from areas posing a serious risk to life.

"I'm very conscious it has been a long and frustrating wait for Port Hills property owners," Mr Brownlee says.

"We had to wait for clarification from the courts about our zoning process, and we needed to make absolutely sure the final zoning decisions are correct, not just for those who live in the area now, but to protect people in the future."

Details of the zoning decisions can be found at: www.cera.govt.nz/port-hills

Support services available over the Christmas and New Year period:

- The **Canterbury Support Line** is available on **0800 777 846** seven days a week, 9am to 11pm.
- The **Canterbury Earthquake Temporary Accommodation Service (CETAS)** is available on **0800 673 227** or www.quakeaccommodation.govt.nz (CETAS is closed only on the statutory holidays).
- The **Kaiapoi Earthquake Hub** at 24 Sewell Street will close on Tuesday 24 December 2013 at 12pm and re-open on Monday 6 January 2014 at 9am.
- Please note the **Avondale Earthquake Assistance Centre** will close permanently on 20 December 2013.
- The **Earthquake Support Coordination** service is available on **0800 777 846**. The service will be closed only on the statutory holidays.
- You can also call **0800 RING CERA (0800 7464 2372)** for information and assistance. During the holiday period the call centre is closed from 1pm on Tuesday 24 December 2013 to 8am on Friday 3 January 2014. Otherwise the call centre is open from 8am to 5pm weekdays.

Progress in Canterbury residential insurance claims

Insurer members of the Insurance Council of New Zealand are making good progress in settling Canterbury residential property claims.

They have already completely settled 10,000 claims. That equates to 41 per cent of over-cap property claims that are with private insurance companies and State-owned claims settlement company Southern Response.

At 1 October 2013, the claims settled included 1,240 major repairs and rebuilds. Insurers are expecting to complete another 2,400 by the end of this year (2013).

Insurance Council spokesman Samson Samasoni says insurers are likely to exceed their 2013 target and expect a significant ramping up of completed repairs and rebuilds during 2014.

"It takes from six months to a year to complete major repairs or rebuilds, so what we're seeing now is the tail end of work that started some time ago," he says.

Of the total of 24,660 over-cap residential properties with insurers, 46 per cent or 11,250 property claims are in a category called 'resolution in progress'. This means that a resolution has been agreed with the customer and they're in the repair or rebuild queue or are awaiting their cash settlement or house reinstatement.

"Insurers have essentially settled or are in the process of completing 87 per cent of our residential property claims," says Mr Samasoni. "There are a further 2,880

properties where the customer is still to make a decision about the settlement option they've been given and a further 540 customers that are still to receive offers.

"Insurers are working constructively with all parties and agencies to address issues that may impact on the speed of settling insurance claims; our sole focus is to complete claims promptly and allow Canterbury customers to get on with their lives," he says.

Challenges

The following are some of the major challenges confronting insurers as they work to complete claims.

Land settlement and remediation – insurers are working constructively with the Earthquake Commission (EQC) to explore the issues and collaborate on a Ground Improvement Pilot Project that will help EQC to better understand the issues and potential solutions.

Shared properties and multi-units – insurers and EQC are collaborating on a project that will address some of the complicated issues and enable insurers to settle multi-unit claims quickly.

Building consents – Some insurer Project Management Offices are reporting that consents are averaging about 80 working days but the Christchurch City Council has made good progress in addressing systemic issues that may have contributed to delays. 🔄

Canterbury residential property insurance claims as at October 2013

As at 1 October 2013	24,660 over-cap residential properties		
	Resolved externally	Rebuilds	Repairs
Properties with claims resolved			
Total 10,000 (41%)	8,760	650	590
Properties with claims resolution in progress			
Total 11,250 (46%)	2,600	3,840 + 100*	4,490 + 220*
Properties with unsettled claims	Settlement option offered but customer undecided	No offer yet	
Total 3,420 (13%)	2,880	540	

*In the queue for the project management office **Figures are rounded

Taking care over the holiday period – Rob Gordon

Another year comes to a close with Christmas rituals, New Year and the anniversaries that go with it. At this time we review the year, look at progress and take stock. We are reminded of changes and losses – it can be sad and stressful.

Here are a few suggestions to help tackle what can be a difficult period for people recovering from disaster.

1. Take stock. Consider what you have achieved. You are likely to overlook your achievements when thinking about what you haven't done. Consider why it wasn't possible to do more, and factor in tiredness and despondency. We tend to remember frustrations and disappointments more vividly than achievements.
2. Recognise the complicated reactions and emotions coming up at this time. Emotions are not logical. Keeping track of feelings helps us manage painful ones and benefit from good ones.
3. Think about what is likely to be brought up by the end of the year. It helps to take part in some form of ritual that recognises the end of the third year of recovery. What has happened; how has life changed; how might you express this? When you create a happening with others, you help painful experiences become part of history.
4. Make a plan for how to deal with the challenging aspects of the time of year, the people and occasions it involves. Think ahead about words you can use to respond to predictable questions, answers you can give to invitations or offers that raise complex feelings. If you are clear and confident in stating what you need, others are more likely to accept it.
5. This time only comes once a year. Consider what you want to get out of it; make a decision to program in rest and enjoyment – they are essential for building energy for the year to come.



Dr Rob Gordon is a consultant psychologist who has more than 25 years' experience from over 30 disasters in Australia and New Zealand. 🔄

Tourism snapshot for greater Christchurch

Recent progress in re-opening hotels and tourism attractions in 2013:

September

Transitional Cardboard Cathedral opened in Latimer Square

New Carlton Hotel opened restaurant and bar

October

Stage two of The Tannery Boutique Retail & Arts Emporium opened - Woolston

Rydges Latimer Hotel + 138 rooms, completion of 1st new build hotel

November

Christchurch Tram re-opened for visitors

Chateau on the Park + 80 rooms, completed repairs

What's in the pipeline for early 2014?

January/February

Thomas's Hotel + 43 backpacker and budget hotel rooms

March

Sudima Hotel Upgrade due for completion

Data supplied courtesy of Christchurch & Canterbury Tourism (Details & dates are best estimates and subject to change)

Update on earthquake activity in Canterbury

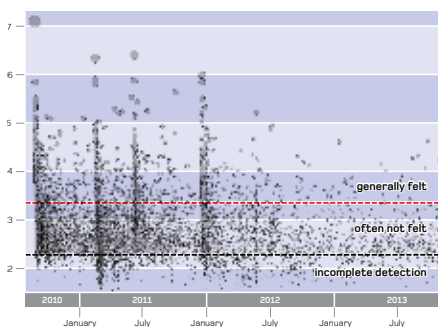
Seismic activity in the Canterbury region during 2013 has reduced considerably from that in 2012.

Manager of the Natural Hazards Research Platform, Kelvin Berryman, says it is clear from the data collected by GeoNet that the sequence of aftershocks in Canterbury is definitely tailing away.

"There's a slow decay, which is what all of GNS's modelling predicted. There is still a higher probability of earthquakes in Canterbury than in other parts of the country so continuing to stay prepared for earthquakes is important," says Kelvin Berryman.

Since January 2013, GNS seismologist Stephen Bannister notes that there have been only 71 earthquakes larger than magnitude 3 in the region covering the Canterbury plains, of which only eight were greater than magnitude 4. In comparison, in 2012, there were 404 earthquakes

Figure 1. Earthquakes in the Canterbury region, plotted against time (up to 17 November 2013)



greater than magnitude 3, of which 46 were greater than magnitude 4.

GNS data shows seismic activity has been dying off since July 2012, although there are occasionally earthquakes above magnitude 4 (as demonstrated by Figure 1 below). The last magnitude 5 event was in May 2012. The earthquakes that have occurred in 2013 have primarily occurred in the area between Rolleston and Lincoln, as the earth attempts to reach a stress equilibrium following the large earthquakes of 2010 and 2011. The activity near Rolleston is located at the eastern end of the Greendale Fault, which ruptured in the September 2010 Darfield earthquake.

Table 1 shows that, with every month that passes without a major aftershock, the probabilities are falling slowly. However, if further significant earthquakes do occur this will cause these probabilities to increase again. That is because a large aftershock can re-energise the system and spark a resurgence of earthquake activity, as was seen following both the February and June 2011 magnitude 6.3 earthquakes.

Meanwhile, recent research released by GNS Science has provided some understanding of how unusual the Canterbury earthquakes were. Led by seismologist Martin Reyners, the research demonstrated that energetic quakes, such as those in Canterbury were, in part, due to the nature of the strong rock structure beneath the region. That affected how the strain, built up in the past, was released during the earthquakes.

"It is important to realise that the Canterbury earthquake sequence was very unusual, with energetic earthquakes producing some of the strongest vertical ground accelerations ever seen in an earthquake," says Martin Reyners. "This is a result of the unusual rock structure of the region. There will be few other places in the world where a similar earthquake sequence might occur."

Normally rocks become hot and "plastic" at depths of about 10 km. However the research found that, beneath Canterbury, strong rocks continue to a depth of about 30 km. These strong rocks store and release strain differently to weak rocks. [↻](#)

Table 1. Long-term probabilities of earthquakes in Canterbury, as of 1 November 2013

	Magnitude		
	5.0–5.9	6.0–6.9	7.0+
	Probability of one or more	Probability of one or more	Probability of one or more
Within 1 month	11%	1%	Below 1%
Within 1 year	68%	9%	1%

UPDATE FROM EARTHQUAKE COMMISSION (EQC)

EQC – facts at a glance

EQC customer and claims team

- Our Customer Contact Centre has answered two million inbound calls since September 2010, and made 410,000 calls to customers in contact campaigns
- Resolved 179,000 contents claims
- Resolved 42,000 under \$15,000 building claims
- Apportioned 96% of over \$80,000 claims (21,000)
- Settled and passed to insurers 14,700 over-cap claims
- Paid more than 100,000 emergency repairs and EQR completed more than 50,000
- Resolved more than 5,000 Port Hills land claims and over 21,000 flat land claims

Next priorities

- Resolve the non-standard under \$15,000 claims and Multi-Unit Building claims where all claims in a non-Body Corporate complex are under \$15,000
- Resolve the remainder of the Multi-Unit buildings including Body Corporate, mixed use, etc
- Resolve the remainder of flat land claims by end 2014
- Resolve Port Hills land claims by end 2014

The Canterbury Home Repair Programme (CHRP)

- Continued achievement of 1,400 home repairs a month
- Quality approval rating of this work stands at 85% of customers who have been through the CHRP process and answered the CHRP survey
- Put \$1.5 billion into the contractor base of Canterbury
- Asbestos training for 9,000 contractors to help keep them safe
- Successful launch of the Safe 6 programme

Highly successful Ground Improvement Trials

In October, EQC undertook a controlled blasting programme to test the effectiveness of methods that can be used to strengthen residential land vulnerable to liquefaction.

To date, the programme has been very successful, with one additional blast to be conducted on Avonside Drive, near the Avondale Bridge, on Monday 16 December 2013 at approximately 3.30pm, to further test one of the ground improvement methods.

Find out more about the Ground Improvement Trials, including a video explaining the methods:

www.eqc.govt.nz/canterbury-earthquakes/land-claims/land-trials



Phone: 0800 DAMAGE
(0800 326 243)
Web: www.eqc.govt.nz

Massive year of activity draws to a close, another one coming

SCIRT's construction teams across the city have had a significant gearing up of activity in 2013. Thanks to everyone working and driving (safely) around SCIRT sites and also supporting their local retailers.

Highlights for 2013

There has been huge progress with getting an earthquake-resistant wastewater system rebuilt in areas with the most damage. The pump station on Pages Road's Bexley Reserve, which will service 24,000 properties, is almost completed. Many other smaller pump and lift stations (which are like mini pump stations) are well on the way city-wide. Reservoir work is well advanced.

Gravity progress

Many suburbs have had their gravity pipe networks repaired and rebuilt: Hillmorton, Hoon Hay, Somerfield, St Martins, Merivale, Woolston, Linwood, Dallington, Avondale, New Brighton and parts of Fendalton, Shirley and St Albans.

Vacuum progress

The vacuum pump station near The Palms shopping centre and vacuum pipe network in the surrounding Shirley streets are both well underway. Next year, the Aranui vacuum installations will increase. The vacuum pump station on Pages Road next to the big gravity station is underway.

Pressure progress

More than 900 pressure wastewater tanks have been installed, with several catchments now fully functioning.

Bridges and causeway

Opawa's Heathcote state highway bridge will be repaired this year, Avondale bridge will be completed early in 2014, South New Brighton's Bridge Street bridge has opened to two-way traffic, and the Bridge

of Remembrance specialist work has started. The causeway to Sumner re-opened with the first part of the new coastal pathway.

Retaining walls back up better

Many roads in Lyttelton have now got new retaining walls, enabling people to get their homes fixed. More work is on the go. Work on Mount Pleasant walls is underway.

What's on the horizon for 2014?

Burwood, Shirley, Wainoni, Beckenham, North New Brighton and Opawa residents will have their gravity wastewater pipes replaced. McCormacks Bay Road and Redcliffs are getting wastewater, stormwater and roading repairs. A new stormwater detention pond and pump station will be built at South New Brighton and the Bridge Street bridge repair completed. Gayhurst Road bridge work will start in March 2014.

The biggest effect upon traffic

The big emphasis for 2014 will be on the central city and the need to concentrate work so the vertical (buildings) rebuild is not held up. SCIRT's central city work has already ramped up in 2013 and will intensify in 2014, the middle year of SCIRT's five year programme. ♻️



Phone: (03) 941 8999
Email: info@scirt.co.nz
Web: www.strongerchristchurch.govt.nz
Twitter: @SCIRT_info



Christchurch Mayor Lianne Dalziel belts up in November in the first big rig to drive across the newly tarsealed Sumner causeway. She's with Fulton Hogan's chief operating officer Robert Jones also celebrating a job that came in on time.

Programme for the recovery of greater Christchurch's natural environment launched

The Natural Environment Recovery Programme (NERP) for greater Christchurch was recently launched at a community event at Travis Wetland in Burwood.

Environment Canterbury Chair Dame Margaret Bazley describes the natural environment as a fundamental part of our shared heritage and culture. The reason why many people have chosen to live in greater Christchurch is to be near rivers, beaches, harbours, forests and the Port Hills.

Holding the launch at the Travis Wetlands in late November was appropriate for several reasons, Christchurch Mayor Lianne Dalziel says. Twenty-one years ago a partnership of passionate community volunteers working with Christchurch City Council created a trust to set up the "natural anchor project of the east" that became the Travis Wetlands Nature Heritage Park. She says that is a good model to follow in progressing the recovery of the natural environment now.

One of Mayor Dalziel's ideas is to create a huge natural wetland in the current residential red zone, which would be a great resource for eco-tourism and education.

The 17 projects that make up the NERP are being led by different organisations and reflect priorities identified from consultation with the community, including making provision for more land for recreation, parks and community gardens. It also tracks the management of earthquake waste and contaminated sites, investigates and plans for natural hazards, reduces flood risks and plans for stormwater management.

NERP Programme Leader Chrissie Williams says the projects are a real opportunity not only for recovery but also to enhance the greater Christchurch natural environment.

The Natural Environment Recovery Programme was developed by Environment Canterbury in conjunction with Te Rūnanga o Ngāi Tahu, Christchurch City Council, Selwyn and Waimakariri District Councils and CERA, along with the Department of Conservation and Canterbury District Health Board. For more information about NERP, go to the Environment Canterbury website: www.ecan.govt.nz/nerp ♻️



CERA Chief Executive Roger Sutton plants a kahikatea with Windsor School students Adam, Taylor, Mya and Abby (L-R) at the recent NERP launch at Travis Wetland.



Phone: (03) 353 9007
Web: www.ecan.govt.nz

Progress in the repair of community facilities

Christchurch City Council has repaired and re-opened community facilities across the city and Banks Peninsula in 2013 and will be gearing up its rebuild programme next year.

The Council's Facilities Rebuild Programme is looking at the future of 1,600 community facilities, all of which are earthquake-damaged to some degree. Since it began the programme in late 2011, the Council has focused on re-opening closed facilities. In 2013, with engineering assessments complete on most of its non-residential buildings (such as libraries and community centres), the Council has put even more energy into repairing and re-opening closed buildings, or opening temporary facilities until more permanent solutions are in place.

Some highlights this year

- Heritage community facilities Linwood Community Arts Centre and Avebury House in Richmond re-opened following significant repairs and strengthening.
- Construction of 12 new social housing units began at Maurice Carter Courts social housing complex in Spreydon in October.
- The temporary Linwood Library and Service Centre opened in Eastgate Mall in April while Bishopdale residents welcomed a new temporary library in Bishopdale Mall in October.
- The Council moved the former QEII Preschool to the site of the demolished South New Brighton Community Centre, with the support of the Lions Clubs International Foundation, re-opening it as a transitional community facility in November.
- Fendalton Community Centre re-opened and Riccarton Community Centre partially re-opened in June. Akaroa Museum partially re-opened in July this year.
- Okains Bay, Little Akaloa, Pigeon Bay, Port Levy and Duvauchelle Community Centres re-opened to the delight of Banks Peninsula residents.



Te Rūnaka ki Ōtautahi o Kāi Tahu representative Richard Tankersley and Facilities Rebuild Project Manager Lincoln Blair blessing the transitional South New Brighton Community Centre.

Looking forward to 2014

- The temporary Central Library Manchester opens on 20 January at 36 Manchester Street, replacing Central Library Tuam.
- Children will be splashing around in a newly rebuilt Scarborough Paddling Pool by the 2014/15 summer. Construction is due to begin in June 2014.
- In early 2014 community consultation will begin on a new Sumner Community Centre and Library, to be built in Wakefield Avenue.
- Construction is expected to begin on a new Aranui community facility – the Council's first rebuilt community centre since the earthquakes – at 31 Hampshire Street in June next year.
- Repairs and strengthening will begin on Waltham Pool and the Lyttelton Norman Kirk Pool rebuild in early 2014. They will re-open in time for the 2014/15 summer.

For more information about the Council's Facilities Rebuild Programme, visit: www.futurechristchurch.co.nz

Letterbox sculpture rises from the rubble in Kaiapoi

A five-metre high sculpture by local artist Mark Larsen made from salvaged residential red zone letterboxes has been installed in Kaiapoi by the Rubble Rousers group.

The totem pole of letterboxes was made as a poignant reminder of the families who have left their red-zoned homes after the earthquakes. The letterboxes were collected with CERA's approval, and permission has been granted for a similar project using letterboxes from Christchurch's flat land residential red zone.



Christchurch
City Council



Phone: 03 941 8999
Web: www.ccc.govt.nz
Email: info@ccc.govt.nz

Development in the Waimakariri eases housing pressure

The rapid pace of development in the Waimakariri district is helping to ease the pressure on housing in greater Christchurch. Towns such as Kaiapoi and Rangiora, which lie within commuting distance of Christchurch, have seen rapid housing development since the earthquakes.

Pressure on the housing market is one of the factors prompting families to relocate to the Waimakariri district, together with the attractions of small town and rural lifestyles. This situation provides opportunities

for businesses and workers coming into the area – as well as posing challenges in providing for the needs of rapidly growing communities.

Market pressures are pushing up house prices in the district, but there are now many residential developments on offer which cater to a range of budgets, from starter homes right through to more expensive properties as well as a wide selection of lifestyle opportunities.

Properties in Waimakariri have recently been revalued for rating purposes. The last valuation was in 2008, and the normally three-yearly review had to be postponed because of the earthquakes.

Properties that have seen a significant rise in value need not necessarily expect a corresponding hike in rates, as

Jeff Millward, Finance and Business Support Manager at Waimakariri District Council, explains: "A 17 per cent increase in the capital value of a property doesn't mean the same increase in rates. The Council only needs the amount it costs to service properties."

Property owners have until 5 January 2014 to contest their new valuation. For more information, see the Waimakariri District Council website: www.waimakariri.govt.nz



WAIMAKARIRI
DISTRICT COUNCIL

Phone: (03) 311 8900
Web: waimakariri.govt.nz

Summer OF Fun

COMMUNITY FUN DAYS

A variety of activities from bouncy castles to archery, face painting to balloon animals. Find out event times and what's on offer at bethere.co.nz

The Summer of Fun events will be happening across greater Christchurch throughout the summer. They are funded by the Christchurch Earthquake Appeal Trust.

DECEMBER 2013

LOCATION	DATE	TIME
Lincoln Union Parish Church, 20 St James Street, Lincoln	Sat 21	10.30am-2.30pm
Willowbank, Willowbank Barnyard, 60 Hussey Road, Northwood *	Sun 22	3pm-6pm

JANUARY 2014

LOCATION	DATE	TIME
St Luke's Church, 212 Pine Avenue, South New Brighton	Thurs 16	11am-2pm

FEBRUARY 2014

LOCATION	DATE	TIME
St Timothy's Anglican Church, 46 Kendall Avenue, Burnside	Sat 1	9am-12pm
St Mark's Church, 101 Opawa Road, Opawa	Sat 1	10am-1pm
Rangiora Methodist Church, 176 King Street, Rangiora	Sun 2	11am-2pm
St Mary's Church, 30 Church Lane, Merivale	Thurs 6	10am-1pm
St John's Church, Cnr Cotswold Ave and Kingrove Street, Bishopdale	Sat 8	11am-3pm
Holy Trinity Church, 168 Stanmore Road, Avonside	Fri 14	5.30pm-7.30pm
St Paul's Anglican Church, 1 Harewood Road, Papanui	Sat 15	10am-2pm
Linwood Ave Union Church, 378 Linwood Ave, Linwood	Sat 15	10am-12.30pm
St Christopher's Anglican Church, 244 Avonhead Road, Avonhead	Sat 15	10am-1pm
St Barnabas Anglican Church, 145 Fendalton Road, Fendalton	Sun 16	12pm-3pm
St Martin's Presbyterian Church, 43 St Martins Road, St Martins	Sun 16	2.30pm-4.30pm
St Stephen's Methodist Church, 378 Yaldhurst Road, Russley	Fri 21	4pm-7pm
St Augustine's Anglican Church, 5 Cracroft Terrace, Cashmere	Sat 22	10am-2pm
St David's Union Church, Main Road, Cust	Sat 22	11am-2pm
Christchurch North Methodist Church, Cnr Chapel Street and Harewood Road, Papanui	Sat 22	11am-2pm
Wainoni Methodist Church, 878 Avonside Drive, Wainoni	Sun 23	11am-3.30pm

MARCH 2014

LOCATION	DATE	TIME
St James' Anglican Church, 69 Riccarton Road, Riccarton	Sun 2	2.30pm-4.30pm
St Mary's Anglican Church, 21 Church Square, Addington	Tues 4	5pm-7.30pm
St John's Anglican Church, 10 St John's Street, Woolston	Sat 8	1pm-3pm
Beckenham Methodist Church, 83 Malcolm Ave, Beckenham	Sat 22	10am-2pm

*Entry by free ticket only as numbers are limited to 500 - Phone St Silas Church 03 352 1366 or 03 352 6263

Event details may change, for updates and new events visit bethere.co.nz or the ChoiceCHCH Facebook page



Christchurch child's recycled garden to keep memories alive

When eight-year-old Rya Fonotia was asked to do a school project on recycling, the Windsor Primary student turned her attention to the nearby residential red zone.

Rya Fonotia's idea for her class project, the 'Pride Challenge', was to remove some unwanted small plants and bulbs from Crown-owned residential red zone homes in Dallington and re-plant them in a temporary garden at her school in Burwood. The Year Four student lives near the residential red zone and has watched as homes are demolished and people's gardens abandoned.

That inspired her to try to recycle some of those plants and put them in a place that could be enjoyed by children at her school.

Rya set herself a tough goal as this required special access to be granted by CERA. But with the support of her school and family, she achieved her goal last month. Treetech Vegetation Inspector Louise Hamilton was on hand to guide her to the areas where she was permitted to access plants.

Windsor School is set to merge with Burwood Primary and be repaired and upgraded. Rya's mother Katrina Hargen says once the school is fixed they plan to create a permanent garden area with recycled plants from the residential red zone. She hopes that will be a place where the children can go to reflect. ♻️



Digging for the future: Rya Fonotia rescues residential red zone plants for her school recycling project.

Military strength lends a hand

Not what you expect to see on a weekday morning in Burwood - 55 United States Marines clearing rubbish from Crown-owned properties on Queensbury Street, in the Christchurch residential red zone.

The Marines were in town last month after taking part in Exercise Southern Katipo with the New Zealand Defence Force. They decided to visit the earthquake-damaged city as part of their R and R (rest and recuperation) time, and were keen to give something back to their host country and help with the recovery effort of greater Christchurch. ♻️



Christchurch door-knocking volunteers remain committed

A small but dedicated army of volunteers is showing no sign of letting up after almost three years of knocking on doors to check on the welfare of others.

The volunteers come from a number of churches around Christchurch and their efforts are overseen by Christchurch Community Response (CCR) Team Earthquake Response Coordinator Janette Sprott. Since the earthquakes, the volunteers have knocked on 26,500 doors - 12,000 in 2013 alone.

"The purpose of these door-knocks is to check on people's wellbeing and support networks. We initially started in the eastern suburbs and have slowly reached further afield as other churches and communities hear of our work. We only go where we are invited by the local communities," says Janette Sprott.

CCR calls on a fluctuating group of about 60 volunteers, many of whom are retired. Among them are Phyllis and Henry Paltridge who started immediately after the earthquakes out of a desire to help and say they are committed to reaching out to people in the community as long as the need is still there.

Fellow volunteer Colin Garthwaite says his heart goes out to people in difficult situations. The reward for him comes from helping people, who feel stuck, to find out about supports and options that are out there.

"You talk to people who have struggled but feel they've come to a dead end. They are thinking, 'Where do I go next?' And you can just see the load lift off them as you give them these avenues that they can go down." The volunteers say that, although the work can be emotionally exhausting, they want to keep helping.

Janette Sprott says the volunteers don't provide professional advice but will give vulnerable people information about where to find help and support.



Photo L-R (Front) Janette Sprott, Janne Ross (Earthquake Coordinator, St Marks Presbyterian Church), (Back row) Volunteers Henry Paltridge, Phyllis Paltridge, Bruce Coppard, Colin Garthwaite. The door-knocking volunteers say that when they listen to people in need and offer information about where to go for support and assistance, they see a load lift from their shoulders.


She says this year they took their door-knocking to areas that were supposedly less damaged such as Avonhead, Bishopdale and Papanui and found as many earthquake issues there as in the badly hit areas.

"We found many elderly people who were unsupported by family and friends and going it alone - many had no idea of the support agencies available.

"The volunteers sometimes also identify people who need to be followed up. It's the role of myself and other coordinators to do that and reassure people they haven't been forgotten," says Janette Sprott.

So far, the CCR volunteers have covered New Brighton, South New Brighton, Parklands, North New Brighton, South Shore, Aranui, Redcliffs, Avonside, St Albans/Edgeware, Papanui (Northlands area), Avonhead and Bishopdale. ♻️

If you or someone you know needs help dealing with earthquake issues, call CERA on **0800 7464 2372** or you can contact the Canterbury Support Line on **0800 777 846**.



A year end message from the leaders of greater Christchurch

Message from Christchurch Mayor Lianne Dalziel

Christmas is almost upon us and it is already two months since our new Council was elected to office. I have spent the past weeks meeting with as many groups as I can and developing strong relationships with all the strategic partners who are critical to the rebuild.

We face a number of challenges ahead and it is my firm belief that we can only meet these by working together, sharing ideas and engaging with our communities in a meaningful way.

We are a new Council and this is a fresh start. We were elected on a mandate of transparency, openness and more inclusive leadership for Christchurch. We need a vision and strategy for the rebuild going forward and the only way for this to be meaningful is for it to be shared – central and local government working hand-in-hand with business and the wider community.

So my goal for 2014 is to build on this promise to our city. We will build strong relationships with our partners and engage with all of the diverse communities that make up the city of Christchurch. This means more than meeting with community members to explain decisions and answer questions – genuine engagement means involving the community in the decision-making process and that is my promise to you.

I wish you all a very happy Christmas and look forward to a busy new year.

Message from Selwyn Mayor Kelvin Coe

2013 has been a busy year for the Selwyn district. In February, the Selwyn District Council approved the construction of a new library and service centre at Lincoln and the building will open early next year.

In June, the Selwyn Aquatic Centre opened and it has proved popular with residents from across Selwyn and the city.

The Eastern Selwyn Sewerage Scheme was also completed and now services Springston, Prebbleton, Lincoln, Rolleston and West Melton. Consultation on Rolleston's Town Centre and Foster Recreation Park has begun.

Census information released in October indicates that Selwyn's population grew by 33 per cent between 2006 and 2013, making it the fastest-growing district in New Zealand. Thanks to everyone in Selwyn for providing a warm welcome to our new residents.

It has been a busy year for everyone and I hope you can all find time to enjoy the company of family and friends over the coming festive season.

Message from Environment Canterbury Chair of Commissioners, Dame Margaret Bazley

It has been a year of great progress and the building of strong relationships between Environment Canterbury and our strategic partners. We take great pride in the work we've done together during 2013 in laying solid foundations for the rebuild and recovery of greater Christchurch through land use plans and the recovery of the natural environment. We anticipate a year ahead where we continue enhancing our partnerships with Te Rūnanga o Ngāi Tahu, Christchurch City Council, Waimakariri and Selwyn district councils as well as CERA; working with them to further develop a successful regrowth in the region.

Message from Waimakariri Mayor David Ayers

Earthquake recovery remains the top priority of the Waimakariri District Council going into the new year. Along with continuing our social recovery work with those residents badly affected by all the problems stemming from the earthquakes, the physical priorities are clear: the revival of the Kaiapoi and Rangiora town centres and the restoration of the Kaiapoi wharf area and riverbanks. The Kaiapoi River flows alongside all the Kaiapoi residential red zone areas and we know that the community and the Council will have a role in deciding the future of the red zones in the years to come. This and the town centre work will present very real opportunities for our community to set new directions for our district.

The Waimakariri District Council and I wish you all a safe and happy holiday season and look forward to working together with you as we go into another year of recovery and renewal.

Message from Kaiwhakahaere of Te Rūnanga o Ngāi Tahu Sir Mark Solomon

The wellbeing of people must be at the centre of our vision for Canterbury. I am reminded of the pepeha of Pita Te Hori, the first Upoko of Kaiapoi Rūnanga - "Atawhai ki te tangata". It exhorts us to be kind and benevolent to your own and to others. In this context I take this to mean that even if we are in a position to only make the smallest of difference for someone else, we should do so. The aftermath of the earthquakes struck me with a profound appreciation of humanity and the care that we can express for each other. We need to continue to be generous to each other and to keep all those artificial barriers down that sometimes prevent us from talking to each other.

YOU'RE A WEE CANTERBURY GEM

Canterbury's been through a lot. Let's remember it's often the simple things that bring the most joy.

all
right?
allright.org.nz

fb.com/allrightnz