

Future Christchurch Update

The voice of the Canterbury rebuild

JUNE 2015



Memorial Wall a 'stunning tribute'
Pages 8 & 9

Work begins on city cycle route
Page 11

In the Know Hub proving popular
Page 15

Connecting people: the new Bus Interchange is already welcoming thousands of passengers a day.

People on the move as Bus Interchange opens

The new Bus Interchange is off to a flying start with all Metro services now connecting through the state-of-the-art facility.

The airport-style lounge features plenty of light and seating. Automatic doors keep passengers safe and

separate from the bus circulation area while digital screens and Metro staff direct passengers to their bus bays.

Within just a five-minute walk of The Square and Moorhouse Avenue, the \$53 million Interchange

marks another step in making Christchurch's central city easier to navigate and a more attractive place for workers and visitors alike. Stage two is now underway and will be complete this winter.

Read more on page 3.

Inside:

- 3 Bus Interchange opens
- 4 Update on central city development
- 5 Town Hall vote this month
- 6 Earthquake support helps Selwyn family
- 7 New group to analyse Victoria Square plans
- 8-9 What next for The Memorial Wall?
- 10 Central city parking tips
- 11 Construction starts on Major Cycle Routes
- 12 EQC & Environment Canterbury updates
- 13 SCIRT
- 14 Learn about the Residential Advisory Service
- 15 In the Know Hub popular



Publishing details

This publication is jointly produced by CERA and CCC.
 For editorial queries: editor@futurechristchurchupdate.co.nz
 For delivery queries: delivery@futurechristchurchupdate.co.nz

ISSN 2422-8664 (Print)
 ISSN 2422-9121 (Online)

This work is licensed under the Creative Commons Attribution 3.0 New Zealand licence.

This publication is produced in a way that allows for maximum recovery and recycling of materials, significantly reducing energy use, air and water emissions.



CHRISTCHURCH CITY COUNCIL

Dr Karleen Edwards
 Christchurch City Council Chief Executive

Decisions being made by the Council this month have far-reaching implications for the city.

In late June, Councillors will agree on a Long Term Plan, setting out what we want to do over the next decade and how we will pay for it.

Their decisions will be well informed by public feedback. Almost 3,000 formal submissions were received on the draft plan, while about 300 people put their views to Councillors in person at hearings. The topics attracting the most submissions were eastern suburbs issues, asset sales, the proposed financial strategy and rates increases, major cycleways, inner city parking and the Stadium.

This month the Council also makes a decision about the Town Hall's future. The Town Hall is of immense cultural and heritage significance to Christchurch. To help Councillors make a sound decision, Council staff have carried out a tender process and prepared a business case looking at the Town Hall's economic viability.

If the decision is made to go ahead with restoration, the Town Hall will be significantly strengthened and refurbished. Given the Council's financial situation, this is not a decision to be taken lightly. However, the Council will receive an estimated \$68.9 million in insurance proceeds, with ratepayers contributing the remaining \$58.6 million.

While there are tough decisions being made, it is also heartening to see visible signs of progress – especially the opening of the Bus Interchange and work starting on one of the new Major Cycle Routes. It is fulfilling to see these projects happening as they are exactly what people said they wanted during the amazing 'Share an Idea' campaign in 2011. ■



CANTERBURY EARTHQUAKE RECOVERY AUTHORITY

John Ombler
 CERA Acting Chief Executive

The recent opening of stage one of Christchurch's new Bus Interchange is a big step forward in bringing more people and greater vibrancy back into the central city. Although, as fate would have it, the opening was delayed by a week due to technical issues with the automatic doors, it was great to see the doors officially open on 25 May. It is exciting to see the people of greater Christchurch using this fantastic new state-of-the-art asset which, like all the anchor projects, is designed to stimulate growth and activity in the central city and meet the needs of the community. The second and final stage of the Bus Interchange will open this winter.

It was also a great step forward for the greater Christchurch community

to have the winning design, The Memorial Wall, announced for the Canterbury Earthquake Memorial. I believe this will be a truly fitting and respectful place for people to contemplate what the earthquakes mean to them individually and to the wider community. I look forward to seeing the results of ongoing engagement with the families of the bereaved over the finer design details.

These two projects and many others are a great example of how CERA and partners such as Christchurch City Council, Environment Canterbury and Ngāi Tahu are working together in the rebuild and are committed to continuing to do so.

In recent weeks new timeframes for some anchor projects have been

released, reflecting the reality that some projects will take longer to complete than was first thought. There are a number of reasons for this. Ground conditions are an ongoing challenge with some land, requiring extra clean-up and/or remediation or special engineering solutions to manage water levels. This can involve extra time and cost. We have made commitments to update the anchor projects' progress as frequently as we can. ■

Rebuild progress at a glance...

72%

of the way through the entire SCIRT work programme



Total number of building consents issued in the Christchurch central city since Sept 2010 = **936**

Total value of building consents issued in the Christchurch central city since Sept 2010 = **\$1,199,991,606**

Thousands use new Bus Interchange on day one

About 5,000 people boarded their bus at Christchurch's new Bus Interchange on opening day, with daily user numbers expected to increase to 70,000 by 2041.

Located in the heart of the city, the new Bus Interchange is the main hub of Christchurch's public transport network with buses making more than 850 trips through the Interchange each week day.

The architecturally-designed building is comfortable, warm and light, allowing passengers to feel safe at all hours. Bus routes and waiting times are easy to find as they are displayed on large and constantly-updating digital screens. Eight of the 16 bus bays are already operational, as is about half of the airport-style passenger lounge.

The \$53 million facility is within a five-minute walk to The Square or

Moorhouse Avenue, making the city more easily accessible. It opened on 25 May thanks to seven-day-a-week efforts from contractors. Meanwhile, Metro bus drivers and information staff underwent intensive on-site training in preparation for opening day.

To facilitate the project, the Bus Interchange was assigned a dedicated case manager by Christchurch City Council and went through a pilot consenting process to ensure approvals were granted on time.

Central city bus services started connecting with the Bus Interchange on opening day – either from the

building itself or from a stop outside. The site of the temporary Central Station has now been absorbed by the Justice and Emergency Services Precinct, allowing construction to continue.

The Interchange is opening in two stages, with the second stage due to be ready this winter. When stage two is complete, bus users will be able to buy food and beverages on-site, as well as book regional bus travel, use the secure bicycle lock-up facility, and enter the building via Colombo and Tuam Streets. ■



Bus Interchange

Construction hours
200,000
(140,000 this year)

Steel columns **53**

Concrete
8,000m³
which is the equivalent weight of 4,000 buses



Stylish and functional: Stage one of the new Bus Interchange is now operational.

Meet the rebuild workers



Luke Hazlett

Project Engineer for SCIRT's McConnell Dowell team

Where are you from?

I was born in Christchurch, but brought up in Wellington. I grew up in Churton Park.

What made you want to be part of the rebuild?

I was working as a Site Manager on the Lake Benmore substation HVDC (High Voltage Direct Current) Pole 3 Interisland Link Upgrade for around 18 months.

After the Lake Benmore project finished, a group of us came up to Christchurch to do emergency earthquake repairs for the Mainzeal, MWH, Vero joint venture. In 2013, I joined SCIRT's McConnell

Dowell team to work on horizontal infrastructure repairs – pipes, roads and bridges.

What excites you about the rebuild?

It's great to be part of a recovery team that has been established after a natural disaster and will leave a legacy.

What challenges you about the rebuild?

The community has been through a lot and our work can sometimes be disruptive. I quite often find myself saying to people, "Thanks for your patience."

Central city development plans going strong

More than half of the owners of commercial land in the Inner Core of Christchurch's central city have development plans complete or underway.

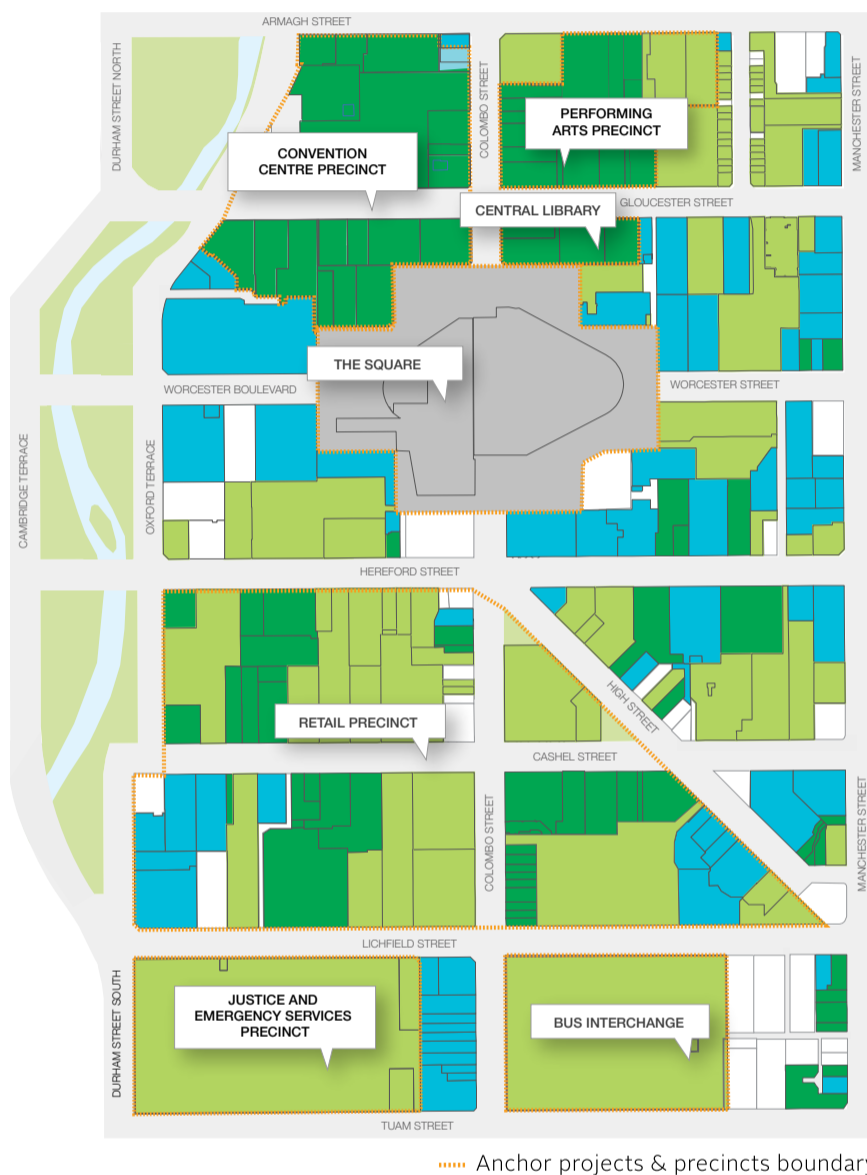
CERA's Christchurch Central Development Unit (CCDU) recently surveyed owners of land in the Inner Core. That's the area bounded by Durham Street/Cambridge Terrace and Tuam, Manchester and Armagh streets.

The results show that 60 per cent of the owners of land in this area either have completed developments or have a firm intention to redevelop.

CCDU Director Baden Ewart says the survey confirms what people can see for themselves around the streets of the central city.

"The Crown's commitment to the vision of the Blueprint Plan is to stimulate development by the private sector and we are now seeing this happen. Obviously some land owners are still working through their various issues but there is now clear momentum in the central city rebuild." ■

Christchurch Central Inner Core property developments



What does the map tell us?

During April and May 2015, CCDU surveyed owners of the nearly 300 individual land titles in the Inner Core, about their intentions for developing their land.

- The results highlight that 60 per cent of the owners of land in the Inner Core (including the Crown) have completed developments or have firm intentions to redevelop. This category includes land with a completed, operating building or a building under construction, land for which detailed designs have been completed, and land ready for building with plans now consented.
- Land owned by the remaining 40 per cent of owners represents a mix of development stages. They include land where owners do not wish to disclose their intentions yet, land with complex ownership, settlement or other issues, and land where owners are taking a wait-and-see approach or could not be contacted.

Key



Anchor projects' timelines reset

The completion dates of some of the anchor projects under the Christchurch Central Recovery Plan will be later than originally thought.

CCDU Director Baden Ewart says there are some good news stories, like the opening of stage one of the Bus Interchange and huge progress with the Justice and Emergency Services Precinct.

"But realistically there are some other anchor projects that won't be completed within the timeframes we've previously indicated."

For example, the Metro Sports Facility was scheduled for completion by March 2017. It is now more likely to

be finished by the first quarter of 2020, although some stages may open ahead of time. The Convention Centre Precinct is likely to be ready by late 2018, when it had been hoped a 2017 opening would be possible.

"There are a whole lot of reasons for that," says Baden Ewart. "These are big, complex projects that require land purchases, land clearance and ground preparation. In some cases, the ground remediation required is far more extensive than we could have originally anticipated. As we go along,

we learn more about land conditions and have to factor that into the mix like any central city developer.

"With infrastructure projects of this scale, to ensure they are fit-for-purpose, tender processes for design and construction need to be robust and therefore take time. A lot of discussion also takes place with other parties involved about the various options and funding. Business cases need to be prepared and proposals put to Cabinet for funding.

"The Crown's commitment to the vision of the Blueprint Plan hasn't changed but what has changed is delivery times for some things. We still have some business processes to go through and that's just a fact.

"I say to people we are going to do it right, not rushed," says Baden Ewart.

To find out more about anchor project timelines, go to: ccdu.govt.nz and search under Overviews and maps. ■

Town Hall future back on agenda

Christchurch City Council will soon consider whether to push ahead with the full restoration of the Town Hall.

If the Council approves restoration at its June meeting, it will also name a contractor to undertake the work.

Earlier this year, the Council called for tenders for the restoration work. It asked contractors to look for innovative ways to reduce the cost of restoration wherever possible.

Council Unit Manager Anchor Projects Liam Nolan says plenty of work has been going on behind the scenes. "Over the past few months, we've been gathering information to present to Councillors to help them make the best decision about the Town Hall's future. This includes carrying out a tender process to give us greater certainty about the cost of the restoration and putting together a business case that explores the economic viability of the Town Hall."

During the February 2011 earthquake, the land beneath and around the Town Hall was severely damaged. The building itself fared relatively well but its foundations need significant strengthening. The restoration work includes repairing and strengthening the Town Hall to 100 per cent of New Building Standard and significantly upgrading and refurbishing the facility so that it can be used for the next 50 years.

A total of \$127.5 million has been set aside for the restoration of the Town Hall after the previous Council agreed the facility should be restored in August 2013. This would be partially funded by an insurance contribution

of \$68.9 million; ratepayers would contribute the balance of \$58.6 million. To receive a full insurance payout, the Council must restore the Town Hall in its entirety.

If the Council decides to go ahead, the restoration of the Town Hall is expected to begin in July/August 2015 and to take three years. ■



An artist's impression of the refurbished and restored Town Hall.



The Town Hall auditorium before the facility was closed due to the February 2011 earthquake.

Other Council facilities news

- Repair and strengthening work is in full swing at the **Botanic Gardens Tea Kiosk** and is expected to be completed this winter. The work

includes strengthening the building to 100 per cent of New Building Standard, refurbishing the kitchen, installing a new fire system, new

external cladding and insulation, and repairing the roof. The building will also be repainted. The Council is still working through options for the future use of the building.

- Construction of a new **Aranui youth and community facility** is expected to begin this month. The Wainoni Aranui Family Centre, which was previously on the Hampshire Street site, was demolished in August 2014 to make way for the new community centre, which will include activity, meeting and office spaces and sports changing rooms. A total of \$5.9 million has been set aside for the facility, including \$1 million from the Christchurch Earthquake Appeal Trust and \$450,000 from Lions Club International Foundation.

- **Woolston Park Memorial to Fallen Soldiers** has been rebuilt and will open on Monday 8 June for use by sports groups. The building replaces the earthquake-damaged heritage facility, which was demolished last year. Some parts of the original have been incorporated into the new building, including the timber frontage and memorial signage.

- **Scarborough Jetboat Shed**, which housed the search and rescue jetboat for the area before its closure, is undergoing repair and strengthening work. The work is expected to be completed at the end of June, so that the jetboat can be stored there once more.

For more information, go to: futurechristchurch.co.nz ■



Woolston Park Memorial to Fallen Soldiers, re-opening Monday 8 June.

Support Coordinator helps Selwyn family

After facing more than their fair share of earthquake challenges, a Selwyn family says the unwavering support of their local Earthquake Support Coordinator helped get them through.

The Charing Cross home of Julie-Ann Johnson and Raymond Williams, and their three children Sophie (12), Patrick (10) and Sebastian (8), is only about a kilometre from the epicentre of the September 2010 earthquake. Despite that, the modern house appeared to have come through the quakes reasonably well. Or so the family thought. However, over the ensuing months and years, voids were discovered under the partially reinforced concrete foundation. During the complicated repair journey that followed, the couple was unable to reach agreement with the Earthquake Commission (EQC) and Fletcher Earthquake Recovery (EQR) over the amount of repairs their house needed.

Julie-Ann Johnson says they were at their lowest point last winter, with everything seemingly at a stalemate, when Earthquake Support Coordinator Jenny Harkerss came into the picture.

“Jenny’s presence at the meetings with EQC and EQR gave us a neutral set of ears so we could later discuss with her the proposals, plans and steps forward.”

“The regular phone calls and visits to our home by Jenny were hugely supportive. She managed to contact managers, engineers and special case managers on our behalf to request information, follow up on queries and help us access Council experts to advise us on technical issues.”

The family moved out of their house in January 2014 for EQC repairs.

They have stayed in five different places since.

The couple says the disruption was hard on their children. It was particularly difficult for Patrick, who has global development delay, meaning he has intellectual disability, limited speech and delayed muscular growth.

“The children didn’t know what to call home any more,” says Raymond Williams.

Late last year, their case was handed over to their insurer. And recently the family moved back into the house with the final repairs almost done.

“It is a thrill to begin to live life normally again,” says Julie-Ann Johnson.

Jenny Harkerss believes a key advantage of her role as an Earthquake Support Coordinator is that she has no involvement in the property.

“I am not emotionally attached to the home. The house is not yours so you hear the nuts and bolts of the situation the home owners don’t hear. That helps you to provide honest, neutral support.”

To find out more about the Earthquake Support Coordinator Service, call 0800 777 846. ■



Light at the end of the tunnel: Selwyn Earthquake Support Coordinator Jenny Harkerss with Raymond Williams and Julie-Ann Johnson and two of their children, Patrick (10) and Sebastian (8).

Earthquake Support Coordinators

0800 777 846

9am to 11pm, 7 days a week

Contact the Earthquake Support Coordinators for free and confidential help with finding your way through the wide range of services involved in repairing and rebuilding your home.

Coordinators can:

- provide relevant information
- identify and connect you with services that can help you with earthquake-related housing, finance, legal, insurance and health matters
- organise meetings between you and the experts on these matters.

An advertisement for the ChCh Story app. It features a photograph of Philip Aldridge, Chief Executive of The Court Theatre, smiling and pointing towards the camera. He is wearing a white t-shirt with a colorful fingerprint graphic. The background is a light blue gradient. To the right of the photo, the text reads: "Discover how locals are making their mark." Below this, it says "Download the free ChCh Story app today." and includes a QR code. At the bottom, there is a quote from Philip Aldridge: "Everyone who lives here, everyone who has come through this, has come out stronger. It is an inspiration and I am proud to call this city home." Below the quote is his name and title: "PHILIP ALDRIDGE ONZM CHIEF EXECUTIVE, THE COURT THEATRE". At the bottom left, the website "futurechristchurch.co.nz" is listed. At the bottom center, the logo for "2015 Christchurch It's happening" is displayed. The bottom right corner features a decorative graphic of colorful fingerprints.

Deadline for Draft Residential Red Zone Offer Recovery Plan extended

More than 800 people have had their say on the Preliminary Draft of the Residential Red Zone Offer Recovery Plan. This number of submissions, coupled with the complexity of the issues raised, has meant that the release of the Draft Recovery Plan has been delayed.

In the first round of public comment, people were asked what they thought should be considered in preparing a new Crown offer to buy vacant, commercial and uninsured red zone properties. The next step in the process is to prepare a Draft Recovery Plan that assesses this feedback and sets out the CERA Chief Executive's recommendations.

CERA Acting Chief Executive John Ombler has acknowledged that the delay will be disappointing for those waiting for a decision.

"The complexity of putting together the draft recovery plan has meant that I require more time

to consider all the issues and give due consideration to the public's feedback," says Mr Ombler.

"This means that I am unable to provide the public, and the Minister, with the draft recovery plan in the timeframes I had hoped."

Mr Ombler says that CERA is working hard to get the draft recovery plan out soon and making sure there is sufficient time for the public to comment.

The Minister for Canterbury Earthquake Recovery is expected to make his decision on the Chief Executive's Draft Recovery Plan by 31 July 2015. ■



Future plan: public feedback will shape any development of Victoria Square.

Future plan to be prepared for Victoria Square

Almost 2,200 public responses were received in the first stage of the Victoria Square community participation process.

The survey responses have been analysed and will be used to guide the development of a draft future plan with options for Victoria Square. This plan will then be released for public feedback.

"We are delighted with the level of response we've had and appreciate the time and effort that people put into their submissions," says CERA Acting Chief Executive John Ombler.

"It is very clear to us that Victoria Square is close to the hearts of the community and we are committed to ensuring the future plan reflects the feedback we have received."

Development of the future plan will be overseen by the newly formed Victoria Square Community Reference Group to ensure it stays true to community views and aspirations. The diagram below shows the process that will be followed.

Victoria Square is part of Te Papa Ōtākaro/Avon River Precinct project and CERA is working together with partners such as Christchurch City Council on the community participation process.

"It is very clear to us that Victoria Square is close to the hearts of the community and we are committed to ensuring the future plan reflects the feedback we have received."

John Ombler

No changes will be made to Victoria Square until this community participation process is undertaken.

A draft design for Victoria Square was released last year. That design is not going to proceed and the extent to which changes are made will depend on feedback received from the community.

The Associate Minister for Canterbury Earthquake Recovery will seek the endorsement of CERA's partners before making a final decision on the Victoria Square plan. ■

Te Papa Hauora/Health Precinct Advisory Council

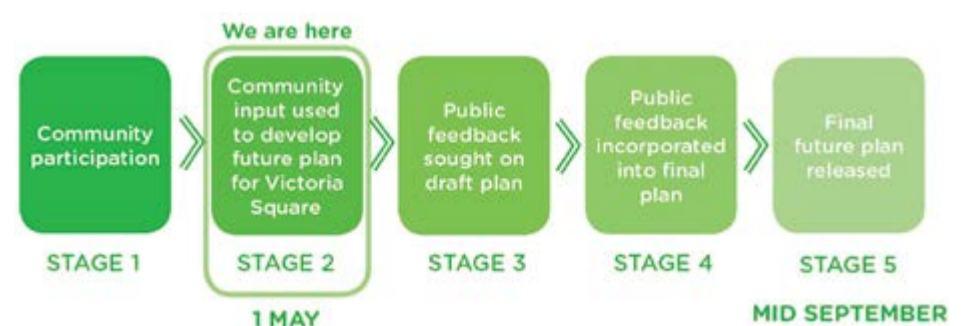
The future leadership of Te Papa Hauora/Health Precinct is being spearheaded by Christchurch's major tertiary and health institutions – the University of Otago, University of Canterbury, CPIT and the Canterbury District Health Board.

Together they make up the Health Precinct Advisory Council. Supported by CERA and Matapopore, the Ngāi Tūāhuriri earthquake recovery steering group, these Christchurch-based institutions hold a shared vision for and commitment to the development of a collaborative and world-class hub of health research, innovation and service delivery.

In November last year the Advisory Council appointed Emma Hodgkin to the role of Executive Officer to support the main health institutions involved and drive, lead and facilitate the vital collaborative networks needed. Along with this role, the appointment of Dr Ian Town as Independent Chair to the Advisory Council ensures that the vision of the Health Precinct continues to move forward.

The Advisory Council has developed a Strategic Plan which outlines the priority areas for the next five years. The six strategic themes for the Advisory Council and Health Precinct are:

1. enhance the profile of the Health Precinct
2. enable the development of a Research Centre of Excellence
3. facilitate the development of innovative models of training and education
4. contribute to advancements in clinical simulation
5. enable the growth of clinical trials
6. strengthen the innovation ecosystem by enabling and facilitating advancements in Health IT. ■





Artist's impression: A view of The Memorial Wall looking towards Oxford Terrace.

Next steps for Memorial design

The selected design has been announced for the Canterbury Earthquake Memorial and now the detailed work gets underway.

The Memorial Wall design by Grega Vezjak, an architect from Slovenia, was chosen last month from the shortlist of six. It will be built on the stretch of the Ōtākaro/Avon River between Montreal Street and Rhododendron Island.

A 150-metre-long wall will feature on the Oxford Terrace side of Ōtākaro/Avon River, with steps leading down to the river. Other elements are a footbridge across the river and an area for quiet reflection on the north bank.

"I think it will be a stunning tribute to the victims of Canterbury's earthquakes, those who suffered through the quakes, and the courage of those who participated in the rescue and recovery operations," Minister for Canterbury Earthquake Recovery Gerry Brownlee says.

Te Rūnanga o Ngāi Tahu Kaiwhakahaere Tā Mark Solomon says the Memorial is yet another step on Canterbury's pathway to healing.

"Ōtākaro/Avon River is a beautiful river. It is a taonga, a treasure, for our people. I said at the time the site was selected, being close to water is good for the spirit. It helps us to remember our loved ones and reflect on our own ability to deal with trauma and come through hard times.

"Let us launch the waka of our recovery forward, each paddle moving us closer to a reawakening."

For Christchurch Mayor Lianne Dalziel, the Memorial likewise offers a way of both reflecting on the past and looking to the future: "We look forward to seeing the design evolve into the kind of space that honours

the memory of those who died or were seriously injured, acknowledges the struggles people still face as a result of the earthquakes, and expresses gratitude for the outpouring of support we received.

"Watching the Memorial take shape, to fit with the other places of remembrance in and around Christchurch, will help us reflect on all we have been through, while inspiring hope for the future." ■

"Ōtākaro/Avon River is a beautiful river. It is a taonga, a treasure, for our people. I said at the time the site was selected, being close to water is good for the spirit. It helps us to remember our loved ones and reflect on our own ability to deal with trauma and come through hard times."

Tā Mark Solomon



Artist's impression: The Memorial Wall, looking from Montreal Street.

What's happened so far?

The Call for Ideas to Remember, launching an international design competition, went out in July 2014, resulting in 331 entries from 37 countries. Six of these were shortlisted by the Evaluation Panel (made up of two architects, two landscape architects, two arts professionals and a bereaved family member). They were displayed publicly and more than 2,800 people contributed feedback. The Evaluation Panel then recommended the selected design, which was approved by the Minister for Canterbury Earthquake Recovery.

What happens now?

Grega Vezjak, with input from a local design team, has started detailed design of the memorial. They will work closely with the family members who lost loved ones and with those who were seriously injured in the earthquakes. Te Papa Ōtākaro/Avon River Precinct Development Director Rob Kerr says the design of The Memorial Wall will take some time as it is a major structure and needs to be both beautiful and safe.

The design team will need to consider:

- what kind of trees to include along The Memorial Wall

- how to design an additional, simple reflective space on the north bank
- how to arrange the names of the people who lost their lives that day (names will only be included with permission from their families)
- how to acknowledge the seriously injured, the survivors of the collapsed buildings and the first responders
- how to share stories and the experiences of the earthquakes, as part of the Memorial, possibly with links to digital resources

- how to symbolically link the Memorial to the sensitive sites around the city where lives were lost, including the CTV and PGC sites.

Where will the funding come from?

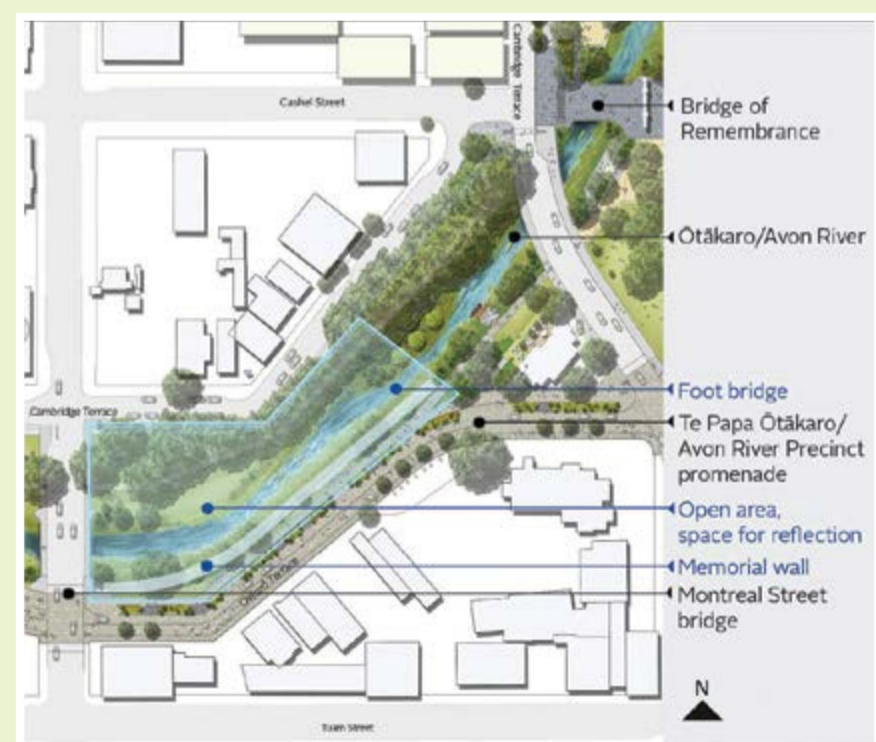
The Government will provide up to \$10 million for the Memorial. Another \$1 million will come from the Christchurch Earthquake Mayoral Relief Fund. ■



Grega Vezjak, an architect from Slovenia and the designer of The Memorial Wall.

Key dates

- February 2016:** The special reflective space on the north bank is due for completion.
- 22 February 2017:** Canterbury Earthquake Memorial is due for completion.



Central city shoppers' guide to parking

Re:START shoppers, read on for some tips on parking close to the retail action.

The Re:START car park on Lichfield Street (opposite the entrance to Ballantynes) has recently reduced from 200 to 144 parks, to allow for progress of the Christchurch Justice and Emergency Services Precinct.

But shoppers needn't fear: there are many other car parks available within a five-minute walk of Re:START Mall, including the Eastern Lichfield car park. This area, bounded by Lichfield Street, Manchester Street and Bedford Row, offers 146 parking spaces. Entry and exit are off Bedford Row and Lichfield Street.

From here, you can reach Re:START Mall in five minutes by walking along High Street then Cashel Mall.

The reduced size of the Re:START car park does not affect the total supply of parking in the central city, as other Council car parks are being expanded or created.

Right now, there are enough parks to meet demand, and the Council and CERA's Christchurch Central Development Unit are working to meet any changes in demand.

For parking updates, visit www.ccc.govt.nz/parking ■



Development Christchurch will secure opportunities and finalise deals with investors and developers.

Commercial focus for development authority

Residents can expect to hear from the newly created Development Christchurch about local projects before the end of the year.

At the end of April, Christchurch City Council agreed to establish a development authority to drive investment and development opportunities across the city. Development Christchurch will be commercially driven, operating at arm's length from the Council, with the aim of kick-starting and supporting development projects in the city centre and suburbs.

The hunt for a Chief Executive and transitional board members is already underway. It is likely that the regeneration of New Brighton will be one of the first projects to get started. As engagement with local residents will form the basis of all Development Christchurch projects, New Brighton residents can expect to hear more about this project before the end of the year.

The Council has already been working with local and national agencies to gain their support for Development Christchurch and tap into existing opportunities.

The Chief Executive of the New Zealand Council for Infrastructure Development, Stephen Selwood, says the establishment of Development Christchurch is a positive step for the city's recovery.

"It is a positive move away from bureaucratic decision making, which inevitably ends up in compromised, slow processes and so often fails to meet the community's needs. It's important that, when it comes to delivery, the Council clearly sets out what it wants to achieve, then hands

"It is a positive move away from bureaucratic decision making."

Stephen Selwood

responsibility over to a highly skilled, capable development agency to get on with the job."

Mr Selwood says the move is consistent with international best practice, where independent development agencies promote strong partnerships between the public and private sectors. He sees the logical next step as involving central government, with the development agency assuming responsibility for the rebuild of the entire city centre.

Mayor Lianne Dalziel says the new authority will be able to achieve results that the Council and central government have not so far been able to realise.

"Development Christchurch is different from anything we've had before. It has been set up to operate in a commercial environment and will have the mandate to move quickly to secure opportunities and finalise deals with investors and developers." ■

Critical culvert gets an upgrade

Work is about to start on upgrading the stormwater culvert under Shirley Road, between Emmett Street and Stapletons Road – making the stormwater network in the area more resilient.

This work is part of the Dudley Creek Flood Remediation Scheme and is also the first of the projects to flow out of the Land Drainage Recovery Programme, which includes a number of projects to address the risk of flooding to the most affected areas of the city.

The culvert upgrade will be carried out by SCIRT and will take about eight months to complete.

For specific information about the culvert upgrade work contact SCIRT on 0800 444 919 or, for more information on Dudley Creek or the Land Drainage Recovery Programme, email the Council on floodmitigation@ccc.govt.nz or call the Council's Customer Call Centre on 941 8999. For all traffic updates and to find out how these works may affect your travel plans, visit the Transport for Christchurch website tfc.govt.nz ■

What does Takapūneke Reserve mean to you?

Christchurch City Council would like your comments and suggestions as it plans the future of Banks Peninsula's Takapūneke Reserve. Your input will help the Council to draft an important Reserve Management Plan for Takapūneke, which will determine how the reserve is to be looked after for future generations.

The reserve has become known to many as 'Canterbury's Waitangi', reflecting its significant influence on events leading up to the signing of the Treaty of Waitangi and to the general history of New Zealand.

To find out more and make your comments online before 29 June 2015, go to: www.ccc.govt.nz/HaveYourSay ■

Construction gears up on cycleway

For Lisa Beardsley, seeing the first significant construction underway on Christchurch City Council's new cycleway network has special significance.

When the Council asked people to suggest names for its Major Cycle Routes, Lisa Beardsley didn't have to think for long. The name Uni-Cycle, she says, just seemed a good fit for the cycleway from the University of Canterbury to the central city.

"I work at the University of Canterbury and have seen an occasional student unicycling around the campus, although

two wheels or four [skateboards] are far more common. When I read that there was a competition to name the cycle routes, the word 'unicycle' popped into my head – I thought it was funny and very suitable for this particular cycleway."

The Uni-Cycle route, or Puari ki Pū-taringa-motu (roughly translated as 'city to Riccarton'), is among the first

four of 13 planned Major Cycle Routes to be built.

Contractor Fulton Hogan is building a 400-metre section of separated cycleway along Matai Street East, with improvements to nearby intersections included in the \$1.6 million project. Funding for this work is split between the Council, the Government's Urban Cycleways Programme Fund and the National Land Transport Fund.

The full Uni-Cycle route is expected to be finished in 2017.

The Major Cycle Routes network is designed to connect the central city to suburbs, education facilities, business and shopping areas as well as to popular recreational destinations.

Other routes in the first group to be built are:

- Papanui Parallel, connecting Northlands and the Northern Rail Route to the central city
- Quarryman's Trail, the link between Halswell, Hoon Hay and Somerfield and the Southern Lights route, which then leads on to the central city
- Rapanui – Shag Rock Cycleway, from the Coastal Pathway at Ferrymead to the central city.

"They (major cycle routes) will provide some wonderful alternatives to busy streets, and several lead to great destinations.

"I commute to work by bicycle Monday to Friday, as long as it isn't raining hard. I prefer to cycle for short trips after work or at the weekend, such as to the local library, supermarket, cafés and restaurants. It's usually quicker to ride than travel by car, and parking is very easy.

"It's usually quicker to ride than travel by car, and parking is very easy."

Lisa Beardsley

"I really like the idea of extending existing cycle routes such as the cycle path beside the railway from Mona Vale to Papanui, as this is an excellent way to get to Papanui without mixing with traffic on Papanui Road. The Rapanui – Shag Rock Cycleway connecting to the Coastal Pathway could be a fantastic weekend trip to Sumner and back, and I really like the plan to have this particular cycleway with separation from the road.

"Cycling is an excellent combination of fun, fitness, connecting with other people, feeling connected to your neighbourhood and city."

More information about the Major Cycle Routes is available on the Council's website: www.ccc.govt.nz/cycleways



Lisa Beardsley is looking forward to an easier ride to work at Canterbury University along the Uni-Cycle route, which she named.

Christchurch City Council in brief

Update on a Long Term Plan for Christchurch

Christchurch City Council will consider almost 3,000 submissions made on the Long Term Plan 2015–2025 in preparation for its adoption at the end of June.

At public hearings held in May, about 300 people presented their submissions in person to Councillors.

This feedback – along with that received at community meetings, via 1,800+ Facebook posts and during Mayor in the Chair sessions – has been analysed.

It indicates residents feel strongly about:

- asset sales
- rates rises

- the Stadium and other anchor projects
- community facilities
- Major Cycleways
- road repairs
- North Beach promenade
- eastern developments such as the retention of the Rawhiti Golf Course and South Brighton Holiday Park, and the repair of the Pages Road bridge.

Council staff have responded to issues raised in submissions and Councillors will consider this information as part of their deliberations. Any changes to the Plan will be incorporated into the final document before it is adopted at the end of June.

Views wanted on quarrying, other land issues

Time is running out for people to have their say about land issues such as quarrying near residential areas in Christchurch.

Stage two of Christchurch City Council's District Plan review includes a number of new provisions, such as:

- character areas in Christchurch city
- more opportunities to object to new quarrying activity close to a residential zone or within a metre of groundwater
- a smaller New Brighton Commercial Zone with reduced height limits
- rezoning of two large rural land blocks for industrial use.

Submissions on the latest proposals close on 15 June 2015.

If you'd like to know more about how your property is affected or how to make a submission, call 03 941 8999 (0800 800 169 for Banks Peninsula callers) or email dpreview@ccc.govt.nz

By early July, stage three will be out for submissions. This covers topics such as the central city, natural and cultural heritage, coastal areas, Cranford basin and the remaining proposals on natural hazards. ■

EQC focuses on completing last 2 per cent of home repairs

With 98 per cent of its Canterbury home repairs completed or underway, the Earthquake Commission (EQC) is ensuring the remaining claims have a clear path to being settled, EQC Chief Executive Ian Simpson says.

“EQC has confirmed a settlement path for all but the most complex building claims, which make up the remaining 2 per cent.

“EQC has about 1,000 home repairs in Canterbury either underway or with a confirmed start date. That leaves approximately 1,300 Canterbury Home Repair Programme (CHRP) repairs yet to begin, without a confirmed start date. Of these, about half are on hold because owners have either deferred the repair or have questions about what has been proposed with the repair,” says Mr Simpson.

“EQC is contacting other customers in the CHRP range who do not have a confirmed start to their managed repair.

“We are also calling those who have deferred their managed repair to ensure both EQC and the customers are clear by 1 June on how their building claim will be settled,” Mr Simpson says.

From 1 June, no more customers will be accepted into CHRP unless they have a prior agreement with Fletcher EQR or EQC. EQC’s intention in setting this date is to confirm a clear path for settlement by 1 June.

From that date, both the customer and EQC should be clear about how the customer’s claim will be settled. Customers still in dispute can continue talking to EQC and settlement will depend on their individual claim circumstances.

Previously cash-settled customers will not be able to opt back into CHRP after 1 June. This is so EQC can finalise the number of repairs still to be done in order to adequately resource them.

“The deadline does not signal the closure of the programme and repairs will continue for as long as needed to get the job done,” Mr Simpson says.



Re-tiling a fireplace surround as part of a CHRP repair.

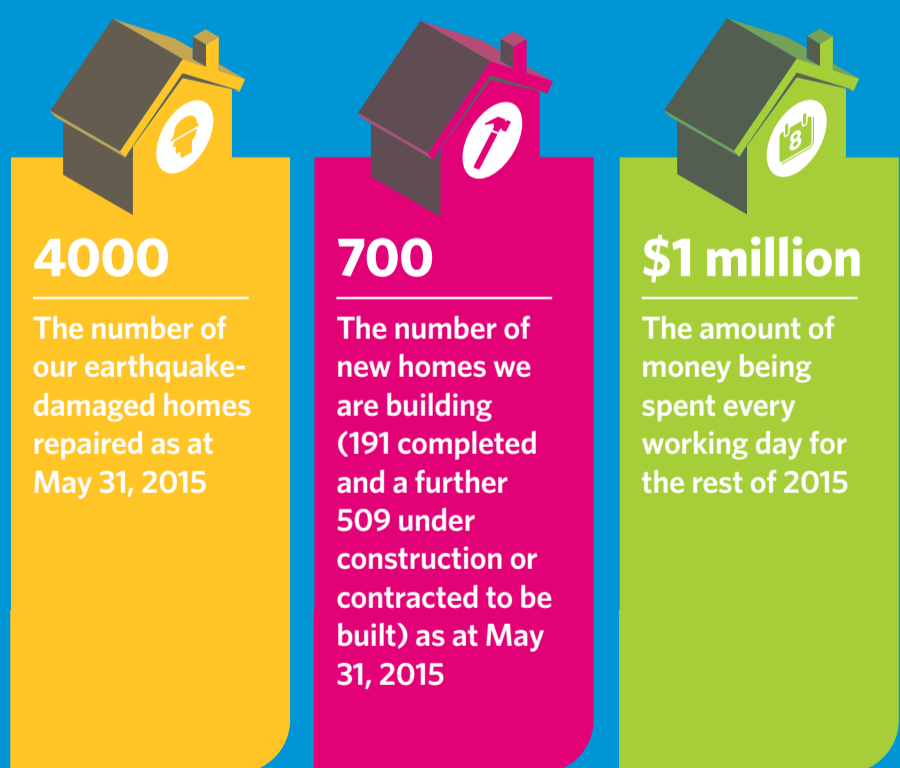
“Cash settlement remains an option. That’s why it is important for people who are not sure about their status to contact EQC or talk to other agencies, such as the Residential Advisory Service (RAS). RAS is free and independent.”

Customers uncertain about their claim status can phone 0800 DAMAGE or make an appointment with a member of EQC’s Community Contact Team, who are available to meet face-to-face at the In the Know Hub at Eastgate Shopping Centre.

A community-led initiative, the In the Know Hub is open Monday to Thursday until 25 June. ■

Contact details:
 🏠 eqc.govt.nz
 ☎️ 0800 DAMAGE or 0800 326 243

Housing New Zealand’s Canterbury recovery programme – by the numbers.



And pretty impressive numbers they are – even if we do say so ourselves. But the work isn’t finished as we aim for up to 5,000 repaired homes by the end of the year.

www.hnzc.co.nz

Housing New Zealand
 Housing New Zealand Corporation

Play your part in achieving cleaner air for our future city

We all want cleaner, healthier air to breathe and we all have a role to play in achieving this.

Environment Canterbury’s proposed Canterbury Air Regional Plan was notified on 28 February 2015. It includes updated rules for industry, home heating, outdoor burning, odour and dust.

While everyone needs to do better, smoke from urban woodburners is the major contributor to our winter air problem in Christchurch. Last year the city had 19 high pollution days.

The proposed Air Plan has new rules that affect woodburner users in Christchurch. This includes the ‘no visible smoke’ rule, which allows smoke to be emitted for only brief periods during start-up and refuelling.

All households with woodburners will receive a letter in the coming weeks with instructions on how to burn smoke-free and Environment Canterbury will be out on the streets

on winter nights checking. You can visit letscleartheair.co.nz for smoke-free instructions too.

The proposed Air Plan also allows anyone to install an ultra-low emission burner in their home – even if it is a new home.

There is plenty of help available for anyone who needs support and advice. You can call 0800 329 276 to find out more. ■

Contact details:
 🏠 ecan.govt.nz
 ☎️ 03 353 9007

A hive of hi-vis activity between Ferrymead and Sumner

People living in the suburbs between Ferrymead and Sumner are very familiar with the sight of road cones, workers clad in hi-vis clothing and heavy machinery around their neighbourhoods.

The Stronger Christchurch Infrastructure Rebuild Team (SCIRT) has been working hard in the area for the last few years. SCIRT's crew have

been kept busy repairing earthquake-damaged wastewater, storm water and fresh water pipes, as well as fixing retaining walls and rebuilding roads.

Just finished

Main Road three laning

There's good news for drivers heading into town from Sumner and Redcliffs. At the end of May, SCIRT's Fulton Hogan team finished the Main Road three-laning project between Scott Park, near the Ferrymead bridge, and McCormacks Bay Road. There will be two lanes for vehicles travelling along this part of the road towards the city, which will help commuters to keep moving.

The three-laning project, planned by Christchurch City Council before the earthquakes, was combined with earthquake repairs to save costs and minimise disruption to the community.

The work, which started in late 2013, was no small task. During the project, SCIRT repaired and replaced sections

of earthquake-damaged wastewater pipes, installed a new wastewater lift station, and replaced storm water culverts. The team also built a new seawall and constructed the Coastal Pathway on this stretch of road. Finally it rebuilt the road to include the second city-bound lane.

Earlier this year, mass movement remediation work on the slope between Main Road and Quarry Road became part of the project. This work, which helped to make the slope more stable, was finished at the end of March.

SCIRT is planning to hold a celebration with the community to mark the completion of this massive project and thank the locals for their patience throughout the work.



SCIRT's Fulton Hogan team were busy finishing work on Main Road, between Scott Park and McCormacks Bay Road, last month.

Whitewash Head Road retaining wall

SCIRT's Fletcher team has finished repair work on the retaining wall at the lower end of Whitewash Head Road six weeks ahead of schedule.

Repairs involved taking down two sections of the wall and rebuilding them. A stone mason recycled the stones so the two rebuilt sections

matched the existing retaining wall. Three other sections of the wall that cracked in the earthquakes were also repaired.

Fletcher is working on two other retaining walls, one on Heberden Avenue and the other on Taylors Mistake Road. ■

In progress

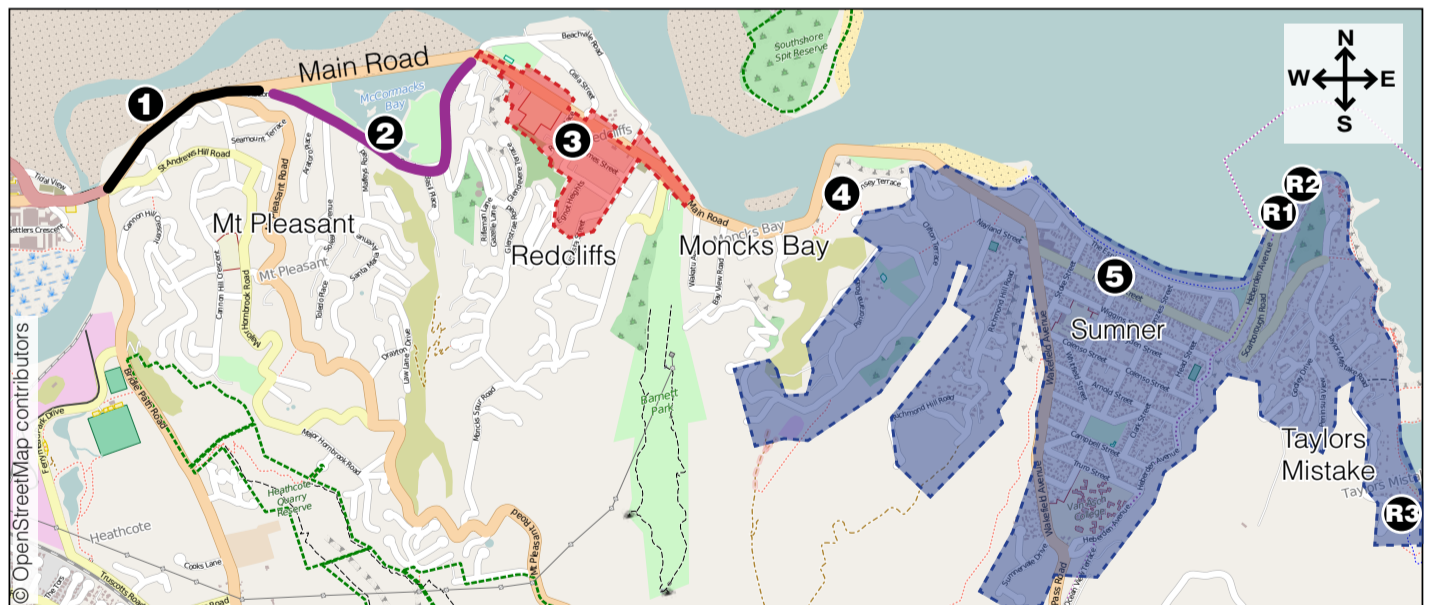
The map (right) shows other work happening between Ferrymead and Sumner, and when it is expected to be completed.

More information

More information about the work SCIRT is doing between Ferrymead and Sumner is available at: strongerchristchurch.govt.nz

Thanks everyone

SCIRT knows it's not easy being held up during your daily commute or having disruption in your neighbourhood. The SCIRT team would like to say a huge thanks to residents, businesses and those who regularly travel through the area for your ongoing patience and support. ■



<p>① Main Road three laning Wastewater, storm water, seawall and road reconstruction <i>Complete</i> SCIRT Fulton Hogan</p>	<p>② McCormacks Bay Road Wastewater, storm water and roading repairs <i>Expected completion: July 2015</i> SCIRT Fulton Hogan</p>	<p>③ Redcliffs catchment Wastewater, storm water and roading repairs <i>Expected completion: Late 2015</i> SCIRT Fulton Hogan</p>
<p>④ Clifton, fresh water supply Water main and fresh water pump station installation <i>Expected completion: Mid 2015</i> SCIRT Fulton Hogan</p>	<p>⑤ Sumner/Scarborough Wastewater repairs <i>Expected completion: Late 2015</i> SCIRT Fulton Hogan</p>	

Retaining wall repairs:

<p>Ⓡ1 Heberden Avenue Retaining wall renewal. <i>Expected completion: September 2015</i> SCIRT Fletcher</p>	<p>Ⓡ2 Whitewash Head Road Retaining wall renewal. <i>Complete</i> SCIRT Fletcher</p>	<p>Ⓡ3 Taylors Mistake Road Retaining wall renewal. <i>Expected completion: Early July 2015</i> SCIRT Fletcher</p>
--	---	--

Contact details:

strongerchristchurch.govt.nz

03 941 8999

info@scirt.co.nz



Women in construction award for SCIRT

The Stronger Christchurch Infrastructure Rebuild Team (SCIRT) recently won the Helen Tippet Award for actively promoting the participation of women in construction.

The award was one of those handed out at the inaugural Hays National Association of Women in Construction Excellence Awards in Christchurch last month.

SCIRT was recognised for its initiative to raise awareness of the construction roles open to women.

SCIRT's Women in Construction group (SWIC) was initially intended to recruit more women to fill SCIRT roles. But the role of SWIC ended up being much broader, says Belinda de Zwart, SCIRT Human Resources Manager.

It provided visible imagery of women in construction roles in advertising and web stories and helped create a personal protective equipment range of gear that is tailored to fit women.

Kimberly Jupp, Project Engineer for SCIRT's McConnell Dowell team, accepted the award on behalf of the group, which includes women right across SCIRT, working for any one of about 100 different companies as engineers, traffic supervisors, project managers, labourers or support staff. ■

Did you know?

- Before the earthquakes only 9 per cent of the construction workforce in Canterbury were women – below the national average of 13.6 per cent. By 2014, that figure was above the national average at 16 per cent and growing.
- Numbers of women working in construction had quadrupled from 2009 to 2014 in Canterbury – from 2,400 to 8,100.
- Women in trades training at CPIT went from 50 in 2011 to 431 in 2014.

RAS: Advisory service available for Canterbury home owners

Stuck in your repair or rebuild process? The Residential Advisory Service (RAS) may be able to help.

The Residential Advisory Service is a free, impartial service that provides advice to Canterbury property owners facing challenges in getting their homes repaired or rebuilt after the earthquakes. Home owners who qualify for it meet with an independent advisor who provides impartial advice.

RAS was set up in May 2013 and in April this year an additional \$1.2 million in funding was approved to keep the service running for another year. It is funded by the Earthquake Commission, members of the Insurance Council of New Zealand and CERA.

“The service has been extremely popular since its launch, with more than 2,450 cases logged – of which 1,775 have been successfully progressed or resolved,” RAS Governance Group Chair Michelle Mitchell says.

“We know a number of home owners are receiving cash settlements from their insurance companies and we are keen for them to be aware that support is out there to help with the repair and rebuild process, including the Residential Advisory Service.”

New resources have been added to the service with the technical panel who can offer a second opinion on existing repair plans and documents. The panel will effectively peer review and advise on a plan but its role is not to provide new designs.

Representatives of RAS are at the In the Know Hub at Eastgate Shopping Centre until 25 June. To find out when they are available, go to: intheknow.org.nz

To find out more about RAS, go to: advisory.org.nz or call **0800 777 299**. ■

RAS has helped to progress or resolve the claims of more than 2300 homeowners since it was established in May 2013

81%
of people who have used the service would recommend it to others*

91%
of people who have used the service felt listened to and understood*

78%
of people who have used it were satisfied or very satisfied with the service*

* RAS exit survey: 13 May 2015

RAS | Free Impartial Advice
Residential Advisory Service for Property Owners

For the repair or rebuild of your home
0800 777 299
advisory.org.nz

A photograph of a man in a dark shirt and trousers sitting on concrete steps in front of a white door with a green frame.



Open until 25 June 2015
Eastgate Shopping Centre

Need information to progress your earthquake repair or rebuild?

Talk face to face with earthquake recovery agencies and support services who can help you with your residential earthquake claim.

Since the In the Know Hub in Eastgate Shopping Centre opened its doors on 20 April, more than 900 people have taken the opportunity to talk, face-to-face, with earthquake recovery agencies and support services.

Not all agencies are at the Hub every day. The timetable shows when you will find each agency at the Hub.

Agency	Day	Time
CanCERN	Monday to Wednesday Thursday	9am–6pm 9am–8pm
Earthquake Commission (EQC) – to make an appointment call 0800 326 243	Monday to Thursday	9am–5.30pm
Canterbury Earthquake Temporary Accommodation Service (CETAS)	Monday to Wednesday Thursday	9am–6pm 9am–8pm
Earthquake Support Coordination Service	Monday to Wednesday Thursday	9am–6pm 9am–8pm
Residential Advisory Service (RAS)	Monday to Wednesday Thursday	9am–4pm 9am–8pm
Christchurch City Council for land drainage/flooding enquiries for general enquiries for consenting enquiries	Monday to Thursday Tuesday to Thursday Thursday	2pm–5pm 9am–1pm 11am–1pm

Free seminars are held every Thursday from 1pm–2pm and then again at 6pm–7pm. These seminars cover a range of residential repair and rebuild topics, including cash settlement and flooding, and are an opportunity to hear from topic experts and to ask questions.

Space is limited – to book a seat, call **0800 777 HUB (0800 777 482)**.

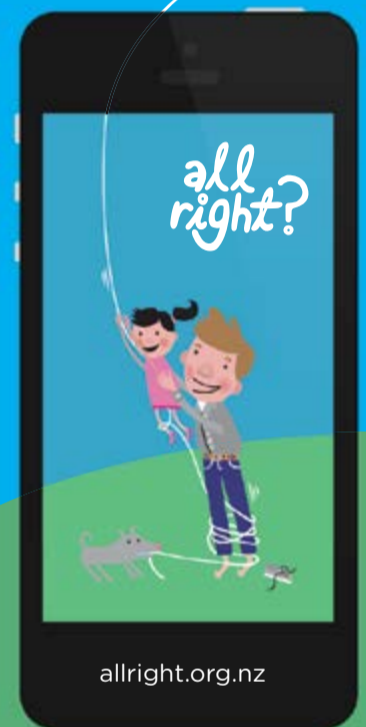
Seminars are recorded and can be viewed at: intheknow.org.nz

For more information visit:
www.intheknow.org.nz

The In the Know Hub is a community-led initiative supported by:

CanCERN, Canterbury Earthquake Recovery Authority, Canterbury Earthquake Temporary Accommodation Service, Christchurch City Council, Earthquake Commission, Earthquake Support Coordination Service, Insurance Council of New Zealand, Ministry of Business, Innovation and Employment, Residential Advisory Service and the Canterbury Community Trust.

ALL RIGHT APP COMING SOON!



allright.org.nz

Useful contacts



Christchurch City Council
03 941 8999
0800 800 169
info@ccc.govt.nz
www.ccc.govt.nz

CERA
0800 RING CERA
0800 7464 2372
info@cera.govt.nz
cera.govt.nz

EQC
0800 DAMAGE
0800 326 243
eqc.govt.nz

SCIRT
03 941 8999
info@scirt.co.nz
strongerchristchurch.govt.nz

Waimakariri District Council
03 311 8900
waimakariri.govt.nz

Selwyn District Council
03 347 2800
03 318 8338
selwyn.govt.nz

Environment Canterbury
03 353 9007
ecan.govt.nz

Canterbury Support Line
0800 777 846

Earthquake Support Coordination Service
0800 777 846

Residential Advisory Service
03 379 7027
0800 777 299
advisory.org.nz

Canterbury Earthquake Temporary Accommodation Service
0800 673 227
quakeaccommodation.govt.nz

What's on...



FIFA U-20 World Cup New Zealand 2015

Until 17 June – Christchurch Stadium (AMI Stadium)

The FIFA U-20 World Cup 2015 is coming to Christchurch. Don't miss your one chance to catch football's future legends.
Various: Adults from \$19, children from \$8 + service fee



KidsFest 2015

4-18 July – Canterbury

More than 250 events for children and families in Christchurch, Selwyn and Waimakariri.
Various prices



Free

Lyttelton Harbour Festival of Lights

13-21 June – Lyttelton Harbour

Around 30 events over 10 days in Lyttelton, including the spectacular street party featuring the Lyttelton Port of Christchurch Fireworks.
FREE



All Blacks vs Argentina

17 July, 7.35pm – AMI Stadium

The All Blacks take on Argentina in the only South Island test match in 2015.
Adults from \$55, children U16 from \$25 (0-2 years free of charge if sitting on caregiver's lap)



Sleeping Beauty on Ice

16-21 June – Isaac Theatre Royal

The award-winning Imperial Ice Stars make a welcome return to New Zealand with a stunning new interpretation of Sleeping Beauty on Ice.
From \$71.50 + service fee



Te Puna Toi

2-14 June – The Gym, The Arts Centre

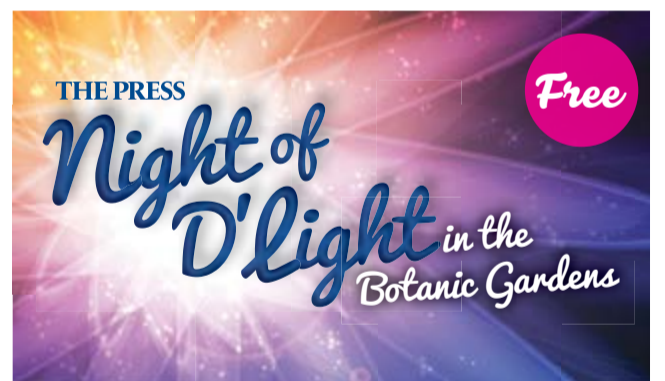
An annual event from Free Theatre.
\$30/\$20



Christchurch Art Show

12-14 June, 10am
Air Force Museum

\$10 adults,
\$7 senior citizens,
under 10 years free



Free

The Press Night of D'Light

8-12 July, 5.30-8.30pm
Botanic Gardens

Experience the gardens in a new light, under the cover of darkness.
FREE



Free

More FM Lantern Parade

4 July, 4.30-6.30pm
Re:START Mall to Victoria Square

Celebrating everything to do with lights: lanterns, search lights, projections, illuminations and more.
FREE



Free

Matariki 2015

Botanic Gardens – Ilex Function Room
21 June, 11am-3pm

Celebrate Matariki in the Botanic Gardens with this fun-filled family day.
FREE



Harlem Globetrotters

14 June
2.30pm and 7.30pm
Horncastle Arena

Ball-handling wizardry!
From \$24 + service fee

The events featured on this page are just a selection of what's happening in Christchurch over the next few weeks. Find out more online. ■

Be There >>>
CHRISTCHURCH EVENTS

For more events visit:
bethere.co.nz