

# Future Christchurch Update

*The voice of the Canterbury rebuild*

AUGUST 2015

## Metro Sports Facility taking shape

Page 3

## Family playground to open by Christmas

Page 4

## Wellbeing: How are we doing?

Pages 8 and 9

## SCIRT eyes up the finish line in central Christchurch

Page 13

Band of Magicians, 'the world's first magic supergroup', is set to thrill at the Christchurch Arts Festival.

## Arts Festival fills city

Cabaret, circus, theatre, music, dance, comedy and visual arts: Christchurch Arts Festival will soon be bringing excitement and entertainment to the city, with 50 shows and events from 27 August to 20 September.

The Festival is back in the heart of the city with a hub at The Arts Centre on Worcester Boulevard. There

are also shows in the restored Isaac Theatre Royal and a spectacular giant inflatable 'luminarium' in Cathedral Square, where visitors travel through a series of chambers and tunnels that use filtered daylight to create a unique arts experience. The Future Christchurch Visionarium will be at The Arts Centre from 31 August to 20 September.

To kick it all off – a FREE Opening Event takes place at The Arts Centre from 6pm, Friday 28 August – everyone's welcome.

To find out more, go to [www.artsfestival.co.nz](http://www.artsfestival.co.nz)

# Inside:

- 3 Metro Sports Facility
- 4 Christmas opening for central city playground
- 5 Botanic Gardens kiosk repairs
- 6 Elder Care Support Service
- 7 Bike central Christchurch
- 8-9 How our wellbeing is progressing
- 10 New Christchurch wards: How will they affect you?
- 11 Christchurch City Council
- 12 Selwyn & Waimakariri
- 13 SCIRT
- 14 Housing New Zealand
- 15 Useful contacts

What's on...

Back Page

### Publishing details

This publication is jointly produced by CERA and CCC.

For editorial queries: editor@futurechristchurchupdate.co.nz

For delivery queries: delivery@futurechristchurchupdate.co.nz

ISSN 2422-8664 (Print)  
ISSN 2422-9121 (Online)

This work is licensed under the Creative Commons Attribution 3.0 New Zealand licence.

This publication is produced in a way that allows for maximum recovery and recycling of materials, significantly reducing energy use, air and water emissions.



## CHRISTCHURCH CITY COUNCIL

**Dr Karleen Edwards**  
Christchurch City Council Chief Executive

Christchurch is looking at arguably the biggest changes to local election boundaries since the 2005 amalgamation with Banks Peninsula.

Thousands of residents who took part in early talks about possible ward boundary changes told Council staff they wanted closer contact with their Councillors and more local decision making.

Based on this feedback, the Mayor and Councillors have indicated they prefer a 16-ward, 16-Councillor and 7-community board arrangement.

These wide-ranging changes would include merging Banks Peninsula with some urban areas in a single ward, three more Councillors, and different ward and community board boundaries. The preferred option is

expected to cost less than the current system.

Public consultation is due to get underway in late August and we are expecting keen public interest. Read on for more details and to find out how you can get involved (see page 10).

Christchurch residents and property owners are also being asked if they think the Council has got it right with its proposal to limit intensification of development in coastal hazard areas. Submissions on stage three of the District Plan review, including coastal hazards, are open until Friday 4 September.

This stage also includes consideration of other natural hazards and the coastal environment, and the

identification and protection of natural and cultural features, as well as some zone changes and other proposals.

To find out how your property will be affected by District Plan provisions, use the property search at [proposeddistrictplan.ccc.govt.nz](http://proposeddistrictplan.ccc.govt.nz) Drop-in sessions are underway to give people the opportunity to find out more and talk one on one to a planner.

These are two important issues for Christchurch and I would like to encourage you to have your say today. ■



## CANTERBURY EARTHQUAKE RECOVERY AUTHORITY

**John Omblor**  
CERA Acting Chief Executive

A great deal of work planning for the long-term recovery of greater Christchurch is now coming to fruition.

The Draft Transition Recovery Plan set out proposals for arrangements for the next phase of the recovery. This included proposals for new recovery legislation focused on regeneration and the creation of a new entity, Regenerate Christchurch, to drive the central city rebuild. At the heart of Regenerate Christchurch is the commitment of Christchurch City Council and CERA to work together on the city's future development, with a view to having local leadership progressively take control of the central city rebuild over the next five years.

The Draft Transition Recovery Plan also set out the Government's decisions to transfer certain CERA functions to other central government departments, including the Ministry of Business, Innovation and Employment, Ministry of Health and Land Information NZ.

I was pleased to see such a high level of public interest in the Draft Transition Recovery Plan with more than 2,500 submissions received. These are now being analysed and the final Transition Recovery Plan is expected to be released in mid September.

Meanwhile, new offers are being made for vacant, insured commercial and uninsured properties in the

residential red zone at 100 per cent of the 2007/08 rateable land value (and improvements, in the case of insured commercial properties).

You can read more about the Residential Red Zone Offer Recovery Plan on page 4.

It's my hope these latest developments will bring a greater level of certainty to people in this community and show we are moving closer to having a tangible framework to take us into the next phase of the rebuild. ■

## Rebuild progress at a glance...

75%

of the way through the entire SCIRT work programme



Total consents issued in greater Christchurch since Sept 2010

= 43,051

36,221 Residential consents



6,830 Non-residential consents



# Huge sporting boost for the Canterbury community

Hydroslides, hot pools, recreational and competitive swimming facilities, indoor courts and training venues are among the features to make up Christchurch's new top-class recreation and sporting facility.

The Metro Sports Facility in central Christchurch will be the second largest of its kind in Australasia, offering an impressive range of fun, fitness and sport options to the community.

"We are confident with agreed funding from the Crown and Christchurch City Council that we can deliver an outstanding aquatic and indoor sports facility. Officials can now begin the process of tendering for design and construction," says Minister for Canterbury Earthquake Recovery Gerry Brownlee.

While the design of the Metro Sports Facility is still to take place, decisions have been made on the key facilities it will offer. They include:

- an indoor aquatic hall with a 79-metre, 10-lane competition pool and spectator seating for 1,000 people
- a 10-metre diving tower
- a leisure water area, with outdoor hot pools, two hydroslides
- a warm water pool and a pool for programmes such as Learn to Swim
- nine indoor courts for sports such as netball, basketball, futsal,

floor ball, and other indoor sports, plus retractable seating for 2,500 spectators and function/VIP areas

- Sport New Zealand's high performance area, which will include facilities for athletes and space for administration
- a large gym/weights facility, with up to five group fitness/multi-purpose rooms and sports health consulting rooms and facilities
- four studio spaces for movement activity like dance
- a Sports House for administration of different sports
- a café, childcare facility and car parking for 500 vehicles (with the ability to expand in the future).

"The decision on what will be included in the Metro Sports Facility means that more regional, national and international sporting events and competitions can be hosted in Christchurch," says Christchurch Central Development Unit (CCDU) Acting Director Baden Ewart.

"As well as providing a space for general fitness and play, the facility will result in an increase in employment, visitor activity and business," says Mr Ewart.



Concept image of the competition pool area. The tender process for the actual design of the facility is set to get underway.

Christchurch Mayor Lianne Dalziel says agreement on funding and facilities will be welcomed by the people of Christchurch, Canterbury and beyond.

"The earthquakes have had a massive impact on the region's sporting facilities and I'm confident this new centre will reignite sport and recreation participation rates, and be another good reason to live in the central city," Ms Dalziel says.

Julyan Falloon, Chief Executive Sport Canterbury, says it's great to have clarity on what will be included in the Metro Sports Facility.

"We need to celebrate what this means, not just for Christchurch, but for the region. It will be a significant central hub forming a key component of a much greater regional network of sporting and recreation spaces and places."

**"The sport and recreation community can play a crucial role by working together on how we can make the best of Metro Sports Facility."**

Julyan Falloon  
Chief Executive Sport Canterbury

The aim is to have some of the facility open to the public in 2019, and the remainder in 2020.

For more information, visit:  
[www.ccdugovt.nz/metro-sports](http://www.ccdugovt.nz/metro-sports)

## Meet the rebuild workers



### Melissa Wright

#### Site Engineer for SCIRT's Fletcher Delivery Team

##### Where are you from?

Porirua, north of Wellington, New Zealand.

##### What made you want to be part of the rebuild?

After training as an engineer and then hearing about the vital rebuild work in Christchurch, I knew I had to be a part of it.

##### What excites you about the rebuild?

The chance to see a living city rebuild itself and know I was a part of it along with hundreds of other people.

##### What challenges you about the rebuild?

The difficulties and complexities around the amount of construction happening at once and knowing how this will (and does) affect the people of Christchurch on a daily basis.

##### What excites you about the future of greater Christchurch?

That a modern, state-of-the-art city will exist and a legacy that I played my part in.

# Strong public response to Draft Transition Recovery Plan

The Draft Transition Recovery Plan, released to the public on 2 July 2015, set out proposals for the transition of the Government's role in greater Christchurch's recovery to long-term recovery arrangements. This included a commitment to having local leadership progressively take control of the rebuild.



The public's views on proposed future transition arrangements are now being considered.

The Draft Plan sought written feedback on proposals for a new legal framework for the recovery, the creation of a new entity to drive the central city rebuild (to be jointly developed with Christchurch City Council), and a new way to report on recovery progress.

More than 2,500 submissions were received by the closing date of 30 July. CERA Acting Chief Executive John Ombler says it is pleasing to see the level of public response about Christchurch's future.

All the responses will be provided to the Minister for Canterbury Earthquake Recovery. The Minister will then decide whether to make any changes to proposals in the Draft Plan. If approved, the final Transition Recovery Plan is expected to be released mid September.

For more information, go to [cera.govt.nz](http://cera.govt.nz) ■

*"It is pleasing to see the level of public response about Christchurch's future."*

John Ombler  
CERA Acting Chief Executive

## New offers for residential red zone

With the release of the Residential Red Zone Offer Recovery Plan, CERA Acting Chief Executive John Ombler has started the process for new Crown offers to property owners of vacant, insured commercial and uninsured properties.

- Owners of vacant residential red zone land will be offered 100 per cent of the 2007/08 rateable land value.
- Owners of insured commercial properties will be offered 100 per cent of the 2007/08 rateable land value and 100 per cent of the 2007/08 rateable improvements value for the insured improvements, if the insurance benefits are transferred to the Crown.
- Owners of uninsured improved properties will be offered 100 per cent of the 2007/08 rateable land value. No payment will be made for uninsured improvements. Property owners may relocate, salvage or sell any uninsured improvements, or elect for the Crown to remove the improvements at the Crown's cost.

Owners who had accepted earlier Crown offers for vacant, insured commercial and uninsured properties will be eligible for a top-up to bring it in line with the new offer.

"We have also reached a decision through the Recovery Plan process to re-open the original Crown offer to insured red zone property owners who did not accept the offer last time around but now wish to accept it," Mr Ombler says.

"The public has asked for this step, and CERA has had feedback from some that living in the red zone is not what they had expected and they would like to have another opportunity to consider an offer from the Crown."

The Residential Red Zone Offer Recovery Plan can be viewed at [cera.govt.nz/residential-red-zone-offer-recovery-plan](http://cera.govt.nz/residential-red-zone-offer-recovery-plan)

Hard copies are available at CERA offices, and Christchurch City Council and Waimakariri District Council libraries and service centres. Contact CERA on 0800 RING CERA (0800 7464 2372) or [info@cera.govt.nz](mailto:info@cera.govt.nz) ■

# New playground for Christmas

Christchurch's biggest and newest playground will be ready in time for the summer holidays.

Construction of the Margaret Mahy Family Playground has already started. Highlights will include a 4-metre-wide slide, double flying fox, water features and interactive equipment.

It takes up one-third of a 2.5-hectare block bounded by the Ōtākaro/Avon River and Manchester, Madras and Armagh streets. The ideas that children put forward in the BNZ Amazing Place competition underpin the developed design for the playground.

Associate Minister for Canterbury Earthquake Recovery Nicky Wagner says it will be an exciting space for children to play in and explore.

"A key feature of the playground is the story arc, which features elements from Margaret Mahy and Elsie Locke's stories, as well as Ngāi Tahu narratives and imagery.

"The team has started the early work of preparing the site and people can expect to see playground equipment being installed from September."

*"This exciting new playground will not only bring children into the central city; it will be a space for the whole family, with picnic areas as well as food and beverage outlets."*

Nicky Wagner  
Associate Minister for Canterbury Earthquake Recovery

City Care and JFC Limited are the main contractors for the playground and its surrounding park. Their work includes installing playground equipment, paving, lighting, seating and landscaping for the greater park area and Armagh Street.

Remediation work to remove any hazardous material from previous land uses has already been completed. ■



Exciting new playground to open by Christmas.



Botanic Gardens Tea Kiosk.

## Rebuilding neighbourhoods across the city

Last month, we looked at what's happening with the repair and rebuild of Christchurch City Council-owned community facilities in the east. There's plenty happening across the city and Banks Peninsula so this month we take a look at progress with other work that's currently underway or about to begin in other parts of the city.

Repair and strengthening work on the **Christchurch Botanic Gardens Tea Kiosk** is almost finished. All the structural work is now completed, bringing the building up to 100 per cent of New Building Standard. Other work to be completed includes refurbishing the kitchen, installing a new fire system, new external cladding and insulation and repairing the roof. The building will also be repainted. The work is expected to be completed this month.



Shirley Library.

Repairs on **Shirley Library** will begin on 24 August and continue into October. The contractors will do the work outside opening hours, allowing the library to remain open throughout the work.

**Papanui Library** is closed from Wednesday 12 August – Monday 12 October for earthquake repairs. It won't be able to accept returned items throughout the closure, but items can be returned to any other library in the Christchurch City Libraries network. The nearest large library is Fendalton Library at 4 Jeffreys Road. Reserved items will be made available at Fendalton Library unless otherwise requested. The Papanui Library customer

service desk located in the same building at the corner of Restell Street and Langdons Road, will remain open throughout the library's closure. It will remain open during its usual hours, 9am–5pm Monday–Friday and will operate temporarily from the rear of the building.



State-of-the-art toilets.

Residents can expect to see brightly coloured **state-of-the-art toilets** popping up across Christchurch and Banks Peninsula in the coming months. A number of earthquake-damaged and below-code toilet blocks are being demolished and replaced with a modern, prefabricated toilet block. The first state-of-the-art toilets were installed at South Brighton Park in June and the remainder will be installed at: Le Bons Bay (to be completed by the end of September 2015); Duvauchelle Showground (due to be finished mid August 2015); Awa-iti Sports Grounds, Little River (to be installed by end of August 2015); Avon Park (to be completed by August 2015); Bexley Park (to be completed by mid October 2015); Heathcote Domain (to be installed by end of October 2015) and Cashmere Valley Reserve (to be installed by end of October 2015).



Victoria Park Information Centre.

The **Victoria Park Information Centre**, a familiar sight to walkers and runners in the Port Hills, is undergoing repair and strengthening work, which will allow it to re-open to the public. The work began in July 2015 and will see the facility strengthened to 67 per cent of New Building Standard by December 2015.

Planning for a new **Bishopdale Community Centre and Library** is in full swing. The new facility will replace the closed Bishopdale Community Centre and Library in Bishopdale Mall, which has been deemed uneconomic to repair. It is proposed an 800-square-metre single-storey facility housing a library, large dance hall and meeting rooms is built on the former creche site. A spatial plan, which indicates how the complex will fit onto the creche site, has been developed and will be considered by a Joint Working Group made up of community representatives on 13 August 2015. It will then be presented to the Fendalton/Waimairi Community Board on 31 August 2015 for consideration. While planning continues, a temporary library continues to operate in Bishopdale Mall.



Te Hāpua: Halswell Centre.

**Te Hāpua: Halswell Centre** is really taking shape now and is on schedule to open in November 2015. The complex, fronting on to Halswell Road, will become a community hub for the rapidly growing Halswell community as well as providing Council customer services. There is an outdoor summer pool, a library, a café, meeting room facilities, large function areas and a Council customer service desk all in the one location. While construction of the facility is well underway, the pool area is getting a bit of a facelift. This summer, residents will see new changing rooms, toilets and showers, a BBQ area and additional poolside seating, all set on some freshly landscaped grounds and partially covered by cool, breezy shade-sails. To add to these surroundings the new 'Wishbone' café located on-site will offer a selection of fresh healthy food catering for a wide range of palettes and appetites.

For more information visit [www.futurechristchurch.co.nz](http://www.futurechristchurch.co.nz) ■

# Elder Care Workers ‘worth a million dollars’

Val was living in her Aranui flat when the earthquake shook, leaving her house a mess and her driveway a trip hazard. The 71-year-old is in poor health with diabetes, asthma and arthritis, so complicating factors such as wonky floors and insurance issues added to her sense of vulnerability.



(From left) Elder Care Workers Dawn Clark, Natasha Spink and Julia Page say they enjoy the opportunity to be there for vulnerable older people.

About four months ago, after repair work had begun inside and outside on Val's flat, a member of her insurance company's Customer Support Team realised Val would benefit from extra support. The woman referred Val to the Elder Care Support service.

She was paired with one of the Canterbury Elder Care Workers, Natasha Spink.

After an initial home visit, Natasha Spink arranged visits from a physiotherapist, the falls prevention team and an occupational therapist.

Says Val, "The house needed fixing because I was warned I might have another fall.

"Natasha is worth a million dollars to me and to anyone who wants to feel safe. If I feel like something's not right, I can call and she'll tell me what to do or where I can go.

"The earthquakes are what caused the problem for a lot of people but the follow-on upsets things even more. I'm scared to go too far from home now."

*"For people who are vulnerable, you really need to have someone you can trust who will look out for you."*

Val  
Aranui resident

Val has found the outside help so valuable she has referred one of her friends to the service as well.

Natasha Spink says she and the other Elder Care Workers build a relationship with each client so they can help them find the right services.

"People come to us with issues that might be around earthquakes but it is often other parts of their lives that are complicating matters, like disability, grief and loss or hearing problems.

"We don't have the technical knowledge about earthquakes and repairs but we are trained social workers and we are there for a person's wellbeing."

Sometimes both an Earthquake Support Coordinator and an Elder Care Worker are supporting the same client simultaneously. "Some people might have been able to manage with either the earthquake or their health but dealing with both can tip the scales," Natasha Spink says.

"Older people are often fiercely independent. We just assess the level

of need and tailor it to suit – and we always get their consent before implementing any service.

"It could be as simple as liaising with extended family overseas so they know we are on the ground and available to help." ■



Val feels safe knowing her Elder Care Worker is a phone call away.

The Elder Care Support service offers free and independent psychosocial support during and beyond any earthquake-related issues. An Elder Care Worker will visit clients in their home and make sure they have access to any health and social services they need. Elder Care Workers work closely with Earthquake Support Coordinators so that elderly people who are impacted by earthquake-related issues and may have a claim in progress can get full wraparound support.

**Elder Care Support service**  
Call the Canterbury Support Line on **0800 777 846** (9am to 11pm, 7 days a week) and ask for the Elder Care Worker Intake Coordinator.

## GreenHouse hub grows innovation

Business innovation continues to grow in Christchurch's central city with the establishment of GreenHouse.

The innovation hub provides support, value-added services and accessible work space to businesses starting out in information and communications technology and digital fields.

GreenHouse, a partnership between Canterbury Development Corporation (CDC) and the Ministry of Business, Innovation and Employment, opened in the Christchurch Innovation Precinct in June and has been well received by businesses.

CDC Chief Executive Tom Hooper says the facility supports the growth of businesses in their early

stages, offering guidance and business support in a collaborative environment.

Entrepreneur Shane Davidson's business Mapprogress provides real-time satellite tracking for outdoor sport events like the Coast to Coast. He has been using the space since it opened and loves the contact with other early-stage businesses.

"Talking to others has given me different ideas about what will work or won't work as I grow the business." ■

*"I love working back in the central city, I feel like I am a part of creating something in the rebuild."*

Shane Davidson  
Mapprogress founder



Mapprogress founder Shane Davidson at GreenHouse.

# How do you think the rebuild is going?

We spoke to people on the street about how they see rebuild progress in greater Christchurch. They gave us their thoughts on what is working and what challenges them on a day-to-day basis.



Bridget Gardner, North New Brighton.

**What excites you about the rebuild?**

I like all the new buildings coming up. Pretty soon we'll have a new city compared to the rest of New Zealand and that's pretty cool. I like some of the new bars too. Engineers Bar is brilliant.

**What do you think could be done better?**

I just don't like how slow it seems over our side of town. I go to Papanui and see all the roads being fixed but over my way it's still so bumpy. I'd just like to see the roads fixed more quickly.



Mohamed Raheem, Merivale.

**What excites you about the rebuild?**

There's always something going on. It's not stagnant at the moment and that makes it feel like things are going really well. Not everything is closed and you can get on with your day-to-day life and the city looks in a tidy condition.

**What do you think could be done better?**

The down side is the pace of the rebuild. I think the speed could be improved. I know there are things that stand in the way – financial constraints and finding enough manpower – but it would be nice to see the rebuild move faster.



Quentin Nicolson, central city.

**What excites you about the rebuild?**

The new places that we have for events are good. I'm pretty happy with the Bus Interchange. I do a lot of night bussing and it's cold so it's nice to have an indoor place to wait.

**What do you think could be done better?**

I haven't got many complaints. I suppose it's just the road works because I bus so much and it gets a bit tedious sitting on the bus waiting in traffic jams but I can just zone out so it doesn't really matter.\*

\* The best place to find out what's happening with road works is: [tfc.govt.nz](http://tfc.govt.nz)



Paul Deavoll (Spark) and Robert Henderson (Christchurch Bike Share) check out the new Spark Bikes.

## Spark bikes get Christchurch moving

The Christchurch Bike Share pilot, which launched this month, offers a new public transport option for people in the central city. Public bike share provides a way for people to travel between key sites, explore the city and support local businesses. Residents can sign up now to be among the first to use the bikes.

In December, a crowd-funding campaign brought the concept to Christchurch. It was a huge success, supported by 450 individuals and businesses. The project has also secured a major supporter in Spark, which is covering its day-to-day costs. The first 30 minutes of every ride will be free. You can return the bike to

any station and make multiple free trips in any one day.

The project is a two-year pilot to generate data about bike share and to build support for it as part of the city's long-term public transport mix. It strongly complements the Accessible City plan, which aims to make travelling in the central

city easy, safe and enjoyable and promotes a vision of cycling in the city. Computer modelling predicts a threefold increase in cycling and public transport use by 2041.

Spark Bike Stations will be installed at five locations across the city. For more information, go to [sparkbikes.co.nz](http://sparkbikes.co.nz)

## Be a busker to restore heritage building

A charity organisation is looking for performers of all ages and styles for a 24-hour 'Busk-a-Thon' to raise money to restore the heritage building it lost in the February 2011 earthquake.

Busk-a-Thon will be run along the lines of Telethon, but with a modern twist and community focus, to raise money for Christchurch charity Home & Family. From 10am on Saturday 17 October until 10am the next day, hundreds of performances will be held in 24 venues across Christchurch.

All funds raised from Busk-a-Thon will go towards Home & Family as it works to restore its Grade 1, Category 1 heritage building in central Christchurch.

To find out more, go to [buskathon2015.com](http://buskathon2015.com) or email [buskathon2015@gmail.com](mailto:buskathon2015@gmail.com)



# How our wellbeing is progressing



**Understanding the recovery's pace and progress is important. It helps us to assess the effectiveness of what's already being done and to identify areas that need more attention.**

This understanding isn't just needed to make progress with things like buildings, roads, repairs

and the economy. We also need it to improve the wellbeing of ourselves, our friends, our families and our communities.

CERA tracks progress in our wellbeing with two major projects: the Canterbury Wellbeing Index and the CERA Wellbeing Survey.

The Canterbury Wellbeing Index provides information in a number of areas about the impacts of the earthquakes on wellbeing and

helps identify trends and issues. It is updated annually. The CERA Wellbeing Survey is conducted every six months with about 2,500 greater Christchurch residents participating. The Survey results feed into the Index, along with data and content provided from many agencies and groups.

The latest findings can be found at: [cera.govt.nz/recovery-strategy/social/social-monitoring](http://cera.govt.nz/recovery-strategy/social/social-monitoring)



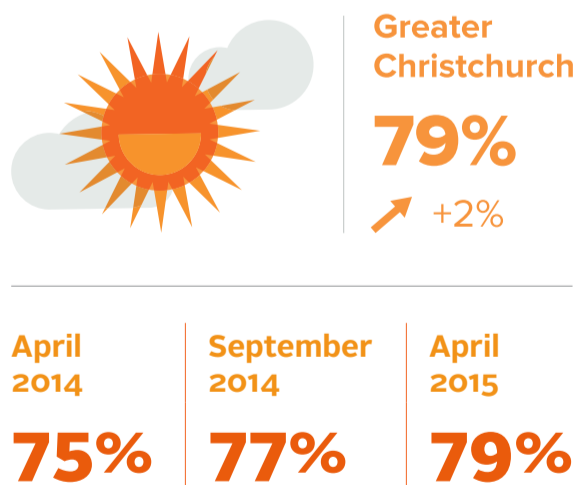
## Where we're at in our recovery

International evidence suggests people's recovery can take between five and 10 years after a major disaster. As we approach the fifth anniversaries of the 2010 and 2011 earthquakes, there are many real signs of progress – but we've still got some way to go.

Here is a rundown of some of the key statistics, and some of the work that is being done in these areas.

### Quality of life

Quality of life in greater Christchurch reported as "good" or "extremely good".



However, a number of groups are still less likely to rate their quality of life positively, including those:

- with unresolved property claims
- with household incomes of less than \$30,000
- living with a health condition or disability
- of Pacific, Asian or Indian ethnicity
- living in temporary housing
- renting the home they usually live in
- aged between 50 and 64 years.

### Sense of community

People in greater Christchurch who "agreed" or "strongly agreed" with a feeling of sense of community.



Some of what's being done to increase levels of connectedness in neighbourhoods

Activities such as Knowing Your Neighbour is a Piece of Cake, Neighbourhood Week and Summer of Fun are designed to increase people's sense of community and connectedness.





## Level of stress

People in greater Christchurch who report frequent stress (“always” or “most of the time”).



The earthquakes have had some positive impacts for some people including:



## Unemployment rates

Pre-earthquake period compared with year to March 2015.

Change in unemployment rate



Change in unemployment rate for those aged 15–24 years



Change in median weekly household income



## Our participation in arts and sports is increasing

Participation in the arts fell after the earthquakes. However, by 2014 the participation rate was higher than the national average.

Due to the loss of sports and recreation infrastructure, sports membership fell by 3 per cent over 2011–2012. However, by 2014 membership of regional sports organisations had grown.

Population participating in 12 or more arts events in the year to October 2014



Regional sports organisation membership 2008 compared with 2014



Some of what’s being done in this area

The Arts and Culture Recovery Programme for Greater Christchurch and Sport and Recreation Recovery Programme both aim to increase participation and address infrastructure challenges in their respective areas.

## Mental health

The higher demand for mental health services has occurred particularly from mid 2012. The timing suggests that factors such as managing repairs and rebuilds, living in damaged environments and the loss of facilities may have lowered people’s wellbeing.

Canterbury District Health Board has reorganised its mental health services to focus more on providing support to people in the community and launched the All Right? campaign.

Access to mental health services provided by Canterbury District Health Board 2010 compared with 2014

Greater Christchurch



## Support and assistance

Canterbury Support Line:  
0800 777 846

Earthquake Support  
Coordination Service:  
0800 777 846

Residential Advisory Service:  
advisory.org.nz

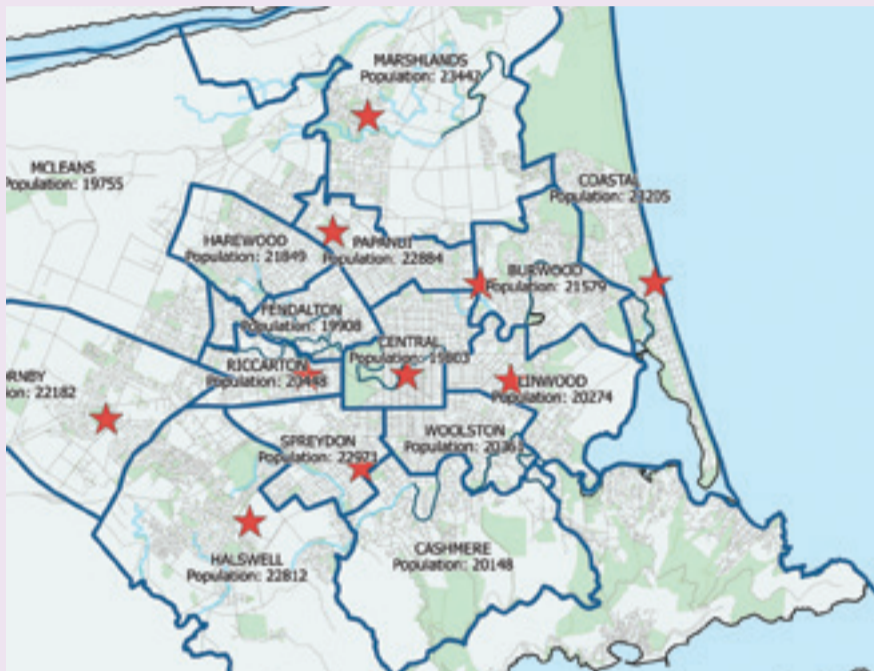
In The Know hub and website  
information: [intheknow.org.nz](http://intheknow.org.nz)

Community in Mind aims to help people and communities in greater Christchurch to rebuild their health and wellbeing.

Visit: [cera.govt.nz/communityinmind](http://cera.govt.nz/communityinmind)

# Council seeks public comment on new ward proposal

After talking to thousands of residents over many months, the Christchurch City Council is proposing some big changes to the ward boundaries for next year's local body elections.



Map showing the 16 proposed new wards for the City Council.

In a six-yearly process required by law, the Council is asking residents what they think about the possibility of having 16 wards with 16 Councillors and seven community boards, plus a Mayor elected by the whole city.

Although the proposal features three more Councillors than at present, it would cost \$24,000 less, as there would be seven community boards rather than the current eight.

If adopted, the new-look boundaries would see Banks Peninsula merged into one ward with areas of Sumner, although it would still have two community boards, Akaroa–Wairewa and Lyttelton–Sumner.

Everyone is invited to comment on the Council's initial proposal when it opens for consultation in late August. After submissions close, the Council will hold hearings and is due to publish its final proposal in November after considering public comments.

Any appeals and objections to the Council's final proposal will be heard by the Local Government Commission, after which it will make its decision by 10 April next year.

To comment on the proposal from late August, go to [ccc.govt.nz/haveyoursay](http://ccc.govt.nz/haveyoursay) ■



Aerial map showing the location of the Catherine Street footbridge (left) and the Woolston Tidal Barrage structure (right).

# Earthquake-damaged Woolston footbridge to be removed

After considering options to repair or replace the earthquake-damaged Catherine Street footbridge in Woolston, Christchurch City Council has decided to remove it.

The footbridge, built in 1961, has been closed for the past four years due to extensive earthquake damage.



Catherine Street footbridge's piles showing signs of significant deterioration.

*“On top of this, its piles show signs of significant deterioration from the elements and its structural integrity is just not up to standard.”*

Steffan Thomas  
Transport Rebuild Unit Manager

“Due to its overall poor condition, the cost of repair or replacement and the existence of another footbridge nearby, the decision was made to remove it,” says Steffan Thomas.

The alternative – the Woolston Tidal Barrage footbridge – is well suited to pedestrians and cyclists and is within 100 metres of the Catherine Street footbridge.

The removal work will be carried out by the Stronger Christchurch Infrastructure Rebuild Team (SCIRT). It is expected to begin by mid 2016. ■

# Christchurch City Council in brief

## Guide takes you to Ōtākaro/Avon River highlights

With spring just around the corner and the days getting noticeably sunnier, there's never been a better time to take a stroll along Ōtākaro/Avon River. To help you along the way, the Avon River Walk brochure has been updated. It features highlights along the river front, including Christchurch Botanic Gardens, Canterbury Museum, Antigua Boat Sheds and more. The guide is

available at the i-SITE on Rolleston Avenue as well as from Council libraries and service centres.

## Tips to stay safe around bin collections

Christchurch City Council is reminding people of the need to be careful when walking or riding near trucks doing kerbside bin collections. While the truck drivers take every care, they are operating machinery and can't see everything, especially

early in the morning or on days when there isn't much natural light. There have been several close calls recently and people using the footpath are reminded that the collection arm can swing down without warning – it has a reach of 4 metres. People on bikes are reminded to pass on the right of the truck.

## Be a part of Neighbourhood Week

Time is running out for people to apply for grants to organise

community events as part of Neighbourhood Week. The week, running from 23 October to 1 November 2015, aims to bring people closer together. Events might include a barbecue, street party, progressive dinner, monster garage sale or sports day. People have until 5pm on 28 August to apply for the subsidy, provided by community boards. Application forms are available at Council service centres or online at [ccc.govt.nz/neighbourhoodweek](http://ccc.govt.nz/neighbourhoodweek) ■

# Children's garden sprouts from Night of D'Light

Children who visited a laser-light event in the Botanic Gardens are happy their donations are being used to help fund a new children's garden in the Botanic Gardens.

"The children's garden will be an area where young people can connect with and discover the world of plants, learn about horticulture, sustainability and the role plants play in keeping our planet alive and functioning well," says Christchurch City Council Operations Manager, Garden and Heritage Parks Jeremy Hawker.

More than 40,000 people experienced Night of D'Light in early July, raising \$34,000. This 'seed money' is being used to kick-start the children's garden.

The garden will be next to the playground. Ideas include a tree hut, an edible tasting garden, a worm or insect garden, a place where children can do some gardening and play

with sand, mud or water, and some interactive learning stations. It may include colourful paths and trails the children can follow and explore while learning about the city's heritage and ecology and the relationship between plants and people.

Ruby, aged 9, from Shirley enjoyed the interactive activities at Night of D'Light.

*"I liked the tree that spoke to you – it was cool."*

Ruby, aged 9  
Shirley resident

She is keen to see other interactive activities included in the children's garden. "I hope I get to help the gardeners and actually do some gardening," she says.

The Council has allocated funding for improvements to the children's area, including the garden, in its Long Term Plan.

Night of D'Light was a KidsFest event sponsored by The Press. Plans are underway for this event to return to Christchurch next year. ■

## Comments wanted on plan to tackle climate change issues

How do you think our community should address climate change and rising sea levels?

Has Christchurch City Council got it right with a proposal to limit intensification of development in coastal hazard areas?

Stage three of the Council's District Plan review includes proposals to address natural hazards – including coastal hazards. There are other proposals relating to the coastal environment, our district's natural and cultural heritage, creation of a holding zone for the CERA red-zoned flat land, and other issues.

Owners and occupiers of properties directly affected by proposed changes in the District Plan have been advised. Whether or not you've got a letter, the Council encourages you to say what you think about the proposals.

Make your view count by making a submission to the Council. All submissions are passed on to the Independent Hearings Panel, which makes the decisions that will affect planning for the future of our district.

Submissions are open now and close on 4 September 2015.

Drop-in sessions began earlier this month and continue until Friday 21 August. They offer the opportunity to talk one on one with a planner to see how your property will be affected. For details of where and when these drop-ins are, refer to the Council's website or call us on 03 941 8999 (0800 800 169 for Banks Peninsula).

For more information on the District Plan review, go to: [proposeddistrictplan.ccc.govt.nz](http://proposeddistrictplan.ccc.govt.nz)

For specific information on coastal hazards, visit: [ccc.govt.nz/coastalhazards](http://ccc.govt.nz/coastalhazards) ■



Ruby and Ben Comfort enjoying climbing logs on the site of the new children's garden.

# Have your say on area plans for Ellesmere and Malvern

Selwyn District Council is working to develop area plans for Malvern and Ellesmere. These plans will provide a 15-year framework for sustainable growth and development.

They will look at how townships within Ellesmere and Malvern could develop and where housing, businesses, open space, community facilities and infrastructure could be located in the future.

The plans will also look at what's special about different towns and needs to be retained, and how nearby towns work together.

Both Leeston and Darfield and other townships within Malvern

and Ellesmere are experiencing population growth.

Looking to the future, the Council wants to develop the area plans to encourage business opportunities, help maintain Selwyn's rural character and natural resources, promote community wellbeing and create high-quality living environments.

Ellesmere area plan meetings were held in early August. Upcoming Malvern meetings, where residents



Leeston High Street: Area plans will focus on future planning for towns in Ellesmere and Malvern.

can share their thoughts about these issues, are being held at:

- **Glentunnel Community Centre**  
Tuesday 18 August, 6.30–8.30pm
- **Darfield Recreation Centre**  
Sunday 23 August, 1–3pm.

Residents can also give feedback on how towns in Malvern and Ellesmere should develop in the future at [selwyn.govt.nz/areaplans](http://selwyn.govt.nz/areaplans) or they can email [areaplans@selwyn.govt.nz](mailto:areaplans@selwyn.govt.nz)

Comments are open until **Friday 28 August 2015**.

Contact details:

🏠 [selwyn.govt.nz](http://selwyn.govt.nz)

☎ 03 347 2800 or 03 318 8338



# Street upgrade adds to Rangiora's appeal

After a four-year wait, the highly anticipated opening date for the new Rangiora Farmers store has been announced, creating a buzz in the town centre. It comes on the back of several other exciting private developments already well underway in the main street.

'Conway Lane' is a two-storey precinct development of around 3,200m<sup>2</sup> of retail and office space. Waimakariri District Council is developing the precinct's laneway, which will feature Timaru Bluestone paving, public green space for shoppers to relax in. Pedestrian connections to the Blake Street car park, feature street lighting and a raised paved area will also connect the precinct to the new Farmers building, which is due to open in August next year.

For the hospitality sector, well-known eateries Joe's Garage and Winnie Bagoes will enter the fold, and Robbie's Bar and Bistro is set to return as part of a new development on the corner of High and Durham streets. The old Junction Hotel site (formerly Robbie's Bar and Bistro) has a new owner. While keeping its earthquake-strengthened historical façade, it will soon be transformed into an Asian-inspired food court with a conveyor belt sushi bar.



Artist's impression: A new Farmers store on the way for Rangiora. Credit Ignite Architects Ltd.

As if all of this wasn't enough to generate a feeling of progress, the Council is revamping the main street. The upgrade includes reintroducing two-way traffic flow from Ashley Street to King Street and providing parallel parking.

Mayor David Ayers says, "There has been much work done since Council adopted the Rangiora Town Centre Strategy back in 2010. It is very pleasing to see significant progress being made from both the private sector and Council to create a vibrant town centre."

*"The private developments, as well as a redesigned High Street, will create a strong future for Rangiora as an attractive regional destination."*

David Ayers  
Mayor

Further improvements to High Street will follow once new buildings are constructed. Enhancements will include new footpaths and street furniture, an improved pedestrian environment and new street lighting.

Contact details:

🏠 [waimakariri.govt.nz](http://waimakariri.govt.nz)

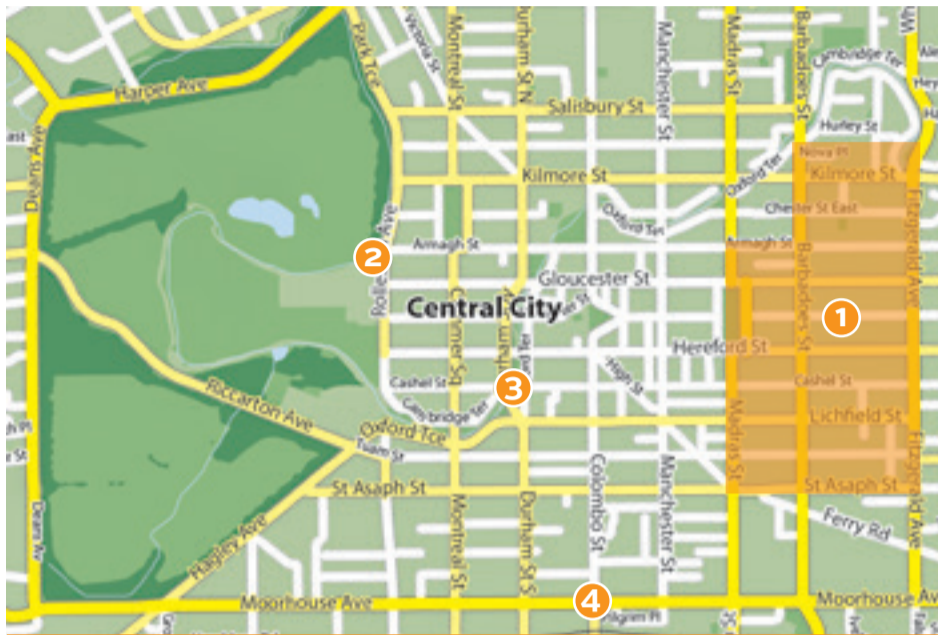
☎ 03 311 8900

@ [info@waimakariri.govt.nz](mailto:info@waimakariri.govt.nz)



# SCIRT has the central city finish line in sight

The Stronger Christchurch Infrastructure Rebuild Team (SCIRT) has been working in the central city since late 2012 and is on the home straight, with 96 per cent of work within the four avenues complete. Here's an overview of some of the underground infrastructure work currently being finished. SCIRT also continues to work on some bridges in the central city.



Christchurch central city map.

## 1. Eastern side of the central city

The big job of rebuilding the hidden underground world of earthquake-damaged wastewater, fresh water and storm water pipes within the four avenues is nearly finished.

While the work is substantially done, small pockets are being finished on the fringes of the central city in the east. Most of this work is happening in the area between Madras Street and Fitzgerald Avenue.

SCIRT thanks you for your patience and for making use of alternative routes around this part of the city to help keep traffic flowing.

## What has SCIRT completed in the central city?

By the end of July, SCIRT had completed the following work in the central city:

- 50km of wastewater pipe
- 12km of storm water pipe
- 6km of fresh water pipe
- 9 pump stations
- 15 bridges (including 8 major repairs)

As SCIRT finishes its below ground work and moves out of the central city, construction companies are increasingly moving in to do their above ground work. ■

*SCIRT would like to thank the people of Christchurch for their patience and support, which has made it possible to get so much done in such a short time. And thanks to everyone who has gone the extra mile to support businesses affected by rebuild road works.*



SCIRT McConnell Dowell crew members check plans for work at Armagh Street bridge.



A strengthening top beam is lowered into the Triumphal Arch of the Bridge of Remembrance.



SCIRT Downer crew members check damage under the Moorhouse Ave overbridge.

## 2. Hagley Park Armagh Street bridge

SCIRT has been working underneath the historic bridge, which was built in 1885, repairing cracks and strengthening it. It involves a lot of stonemasonry work, including carefully removing the bricks that make up the arch, repairing the cracks, then re-laying the bricks.

The bridge remains open to pedestrians and cyclists, while a temporary service road off Riccarton Avenue has been set up for drivers to access the Botanic Gardens car park. Repairs are expected to be completed in late 2015.

## 3. Triumphal Arch on the Bridge of Remembrance

Future-proofing this important war memorial while repairing it is a big job. SCIRT has been improving the foundations and strengthening the structure to reduce the risk of damage in any future earthquakes.

A massive 8.2-tonne beam was recently lowered into the arch. The beam includes a central sliding plate to allow the Triumphal Arch to rock in future tremors. SCIRT's work on this historic monument is expected to finish in late 2015.

## 4. Moorhouse Avenue overbridge

Temporary repairs after the February 2011 earthquake kept the Moorhouse Avenue overbridge open. SCIRT started permanent repairs on it in February this year. This complex 20-month project involves strengthening eight of the ten supporting piers under the bridge by wrapping 'concrete jackets' around them. The other two piers are being demolished and rebuilt.

To minimise disruption to traffic, SCIRT designed the repairs to keep the bridge open throughout, with reduced lanes and turning options. Work is expected to finish in late 2016.

### Contact details:

strongerchristchurch.govt.nz

03 941 8999

info@scirt.co.nz



# One-stop-shop website for contaminated sites information

A website for home owners and residents whose properties may have been used for hazardous activities or industries is now available.



The new [contamland.co.nz](http://contamland.co.nz) website is now available.

At [contamland.co.nz](http://contamland.co.nz) people can find out what their land was previously used for, what to do if they want to test their land, and how to manage and dispose of contaminated soils.

ContamLand was created by the Combined Health and Environmental Risks Programme Control Group (CHER). This Group was set up to provide a unified approach to earthquake land repair and to deal with environmental and health issues arising from the effects of the earthquakes.

CHER Chairman, Don Chittock of Environment Canterbury, says the Canterbury earthquakes have led to an unprecedented level of redevelopment throughout the region. The resulting large-scale demolition, repair and rebuilding phases have triggered a variety of environmental issues that require careful management.

CHER has a joint governance group, which originally consisted of Environment Canterbury, Christchurch City Council, Canterbury Earthquake Recovery Authority, Selwyn District Council and Waimakariri District Council. Its membership has since been widened to include WorkSafe, Canterbury District Health Board, Ministry for the Environment and Ngāi Tahu.

“There is a lot of information out there about contaminated sites,

but people often have to look to many different sources to find it,” Don Chittock says. “This new website pulls together all this information into one place.”

Mr Chittock says the idea for the website came about after the success of CHER’s Asbestos Aware website ([asbestosaware.co.nz](http://asbestosaware.co.nz)). That website serves as a ‘one-stop shop’ for information relating to asbestos and how to deal with it.

**“While pulling together this site, we realised we also needed to increase the awareness of land and soil contamination by providing a similar information source.”**

Don Chittock  
CHER Chairman

ContamLand has been developed specifically for greater Christchurch, but the information is relevant nationwide.

For more information, go to: [contamland.co.nz](http://contamland.co.nz) ■



Nine new two-bedroom homes in central Christchurch are now being enjoyed by Housing New Zealand tenants.

# New builds and warmer homes from Housing New Zealand

Brand-new social housing, together with repaired and improved existing homes, are benefiting thousands of tenants across Christchurch.

Housing New Zealand’s Canterbury Earthquake Recovery Programme (CERP) is investing more than \$350 million in the region’s rebuild. It’s making great progress on its programmes to repair up to 5,000 earthquake damaged properties and to build 700 new homes.

At the end of July, 4,377 repairs had been completed and 228 new homes built.

The programme involves an estimated 1,000 tradespeople and pumps \$1 million into the local economy every working day.

CERP General Manager Paul Commons says the new homes are designed and built to meet the current and future needs of tenants.

**“They are of different sizes and types to reflect the nature of our tenants’ needs. Modern housing helps deliver better health outcomes for families who will live in these warm, dry homes.”**

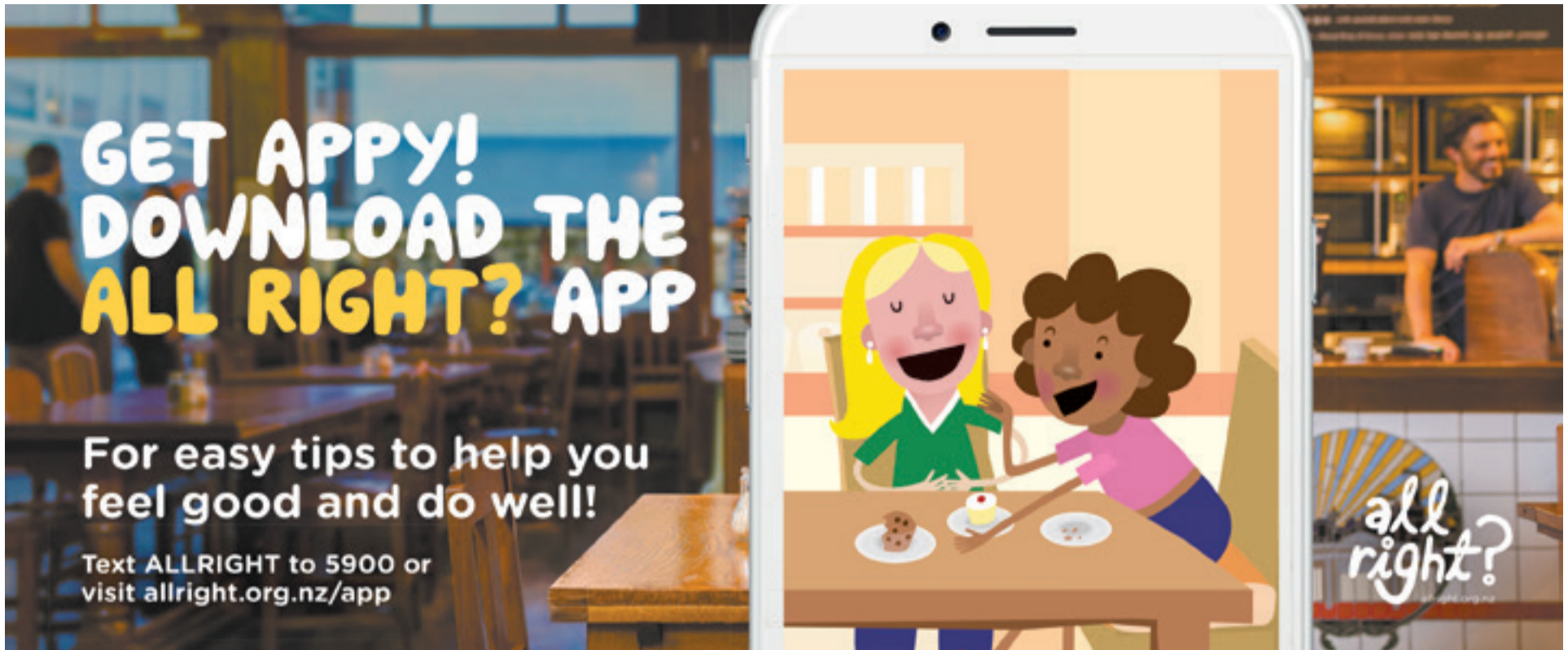
Paul Commons  
CERP General Manager

As a significant land owner in Christchurch, Housing New Zealand uses modern building designs that fit the needs of communities. The organisation plays an integral part in the ongoing urban renewal of the city.

Housing New Zealand homes are being built in central Christchurch as well as in suburbs across the city, including Bryndwr, Shirley, Riccarton, Avonside, Linwood, Richmond, Aranui, Parklands, Bromley, Mairehau, Strowan, Bexley, Waltham, Woolston, St Albans, St Martins, Spreydon, Northcote, Papanui, Hei Hei, Phillipstown, Addington, North New Brighton, Hornby, Heathcote and Bishopdale.

Mr Commons says the location of these homes has been carefully selected so tenants are in close proximity to services such as schools, medical facilities and shopping centres.

Hundreds of tenants and their families are already enjoying living in these new homes. Mr Commons says it is pleasing to know thousands more will also enjoy the comfort and warmth of new homes, the majority of which will be completed by the end of 2015. ■



## Get the inside scoop on Christchurch!

From New Brighton community heroes and inspiring public art to food truck delights and local start-ups, behind every good headline there's a great story.

Discover the real stories that will surprise and inspire – all packaged into the Chch Story app.



futurechristchurch.co.nz



Download the Chch Story app today!  
Free from the App Store or Google Play.



## Useful contacts



Christchurch City Council  
03 941 8999  
0800 800 169  
info@ccc.govt.nz  
ccc.govt.nz

CERA  
0800 RING CERA  
0800 7464 2372  
info@cera.govt.nz  
cera.govt.nz

EQC  
0800 DAMAGE  
0800 326 243  
eqc.govt.nz

SCIRT  
03 941 8999  
info@scirt.co.nz  
strongerchristchurch.govt.nz

Waimakariri District Council  
03 311 8900  
waimakariri.govt.nz

Selwyn District Council  
03 347 2800  
03 318 8338  
selwyn.govt.nz

Environment Canterbury  
03 353 9007  
ecan.govt.nz

Canterbury Support Line  
0800 777 846

Earthquake Support Coordination  
Service  
0800 777 846

Residential Advisory Service  
03 379 7027  
0800 777 299  
advisory.org.nz

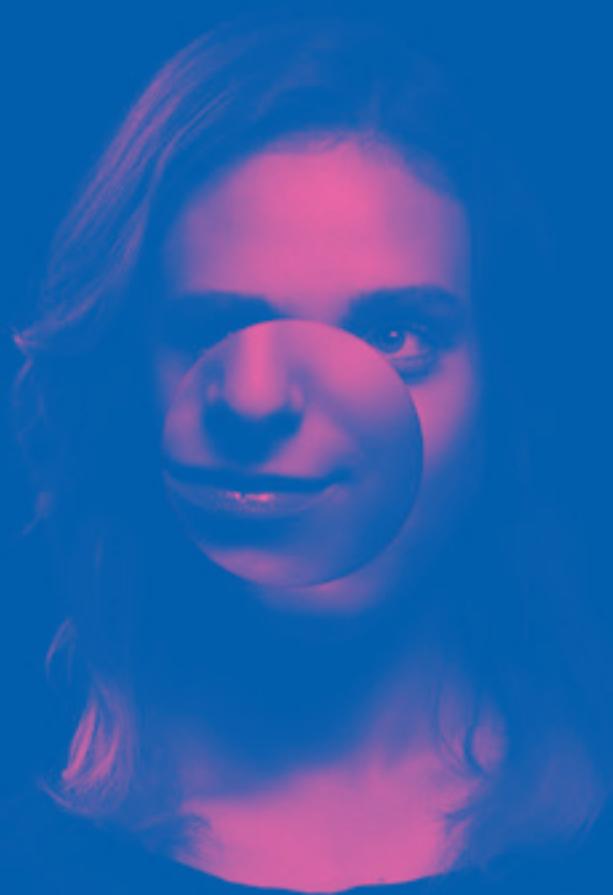
Canterbury Earthquake Temporary  
Accommodation Service  
0800 673 227  
quakeaccommodation.govt.nz

# What's on...

## Christchurch Arts Festival

27 August–20 September, various times, various locations

Featuring an exciting programme of cabaret and magic, high-quality theatre and dance alongside a diverse offering of classical through to contemporary music and community events. Various prices



Free

## NZ National Squash Championships

21 August, 12noon, Christchurch Football Squash Racquets Club

Watch some of New Zealand's top-ranked players, many of whom hold world rankings. Spectators Free



## A Midsummer Night's Dream

27–29 August, 7.30pm and matinee on Saturday, Isaac Theatre Royal

Royal New Zealand Ballet performance. From \$20



## Luminarium

4–13 September, Monday–Friday 11am–5pm, Saturday and Sunday 10am–5pm, Cathedral Square

Travel along a fantastical maze of winding paths through chambers filled with soaring domes and geometric patterns. Admission \$5



## Monty Python's Spamalot

4–12 September, various times, Isaac Theatre Royal

A musical lovingly ripped off, from Monty Python and the Holy Grail. From \$72.50 + booking fee



## Imagine Dragons Smoke & Mirrors Tour

10 September, 7.50pm, Horncastle Arena

\$95.20 + booking fee



## White Cloud – Tim Finn

4–5 September, 6pm, TVNZ Festival Club, Arts Centre

Celebrated musician Tim Finn takes audiences on an immersive, poetic musical journey of discovery. From \$43 + booking fee



## Band of Magicians

16–19 September, 7.30pm and matinee on Saturday, Isaac Theatre Royal

From \$44.90



## Battle of the Rebuild

12 September, 6.30pm–11.30pm, Horncastle Arena

This Black Tie event will be a night full of glitz, glam and boxing action. From \$29



## Dylan Moran – Off The Hook

27 August, 8pm, Horncastle Arena

Dylan Moran is an unpredictable comedian who chews life up and coughs it out. From \$81.40 + booking fee



## Little Shop of Horrors

13 September, 7.30pm, Isaac Theatre Royal

From \$35

The events featured on this page are just a selection of what's happening in Christchurch over the next few weeks. Find out more online. ■

**Be There** >>>  
CHRISTCHURCH EVENTS

For more events visit:  
**bethere.co.nz**