

Community Forum  
Private Bag 4999  
Christchurch 8140

Meeting notes for the meeting of the CERA Community Forum  
Thursday 3 April 2014, 6:00pm  
Canterbury Club, Cambridge Terrace

**Present:**

Community Forum members:

Richard Ballantyne, Gill Cox, Martin Evans, Tom McBrearty, Lesley Murdoch, Jocelyn Pappill, John Peet, Emma Twaddell, Darren Wright

**Apologies**

Weng Kei Chen, Leanne Curtis, Maria Godinet-Watts, Trevor McIntrye, Faye Parfitt, Patricia Siataga, Rachel Vogan, John Wong

**Chair**

Darren Wright

**In Attendance**

Hon Amy Adams, Associate Minister for Canterbury Earthquake Recovery (first item only)

Benesia Smith, Deputy Chief Executive, Strategy and Governance, CERA

Michelle Mitchell, Deputy Chief Executive, Social and Cultural Recovery, CERA

Denise Kidd, General Manager, Community Resilience, Social and Cultural Recovery, CERA

Catherine Nesus, General Manager, Effective Government Services, Social and Cultural Recovery, CERA (first item only)

Carmen Hammond, Manager, Effective Government Services, Social and Cultural Recovery, CERA (first item only)

James Webb, Places and Spaces Manager, CCC (first item only)

Viv Smith, Manager, Planning, Strategy and Governance, CERA (second item only)

Stephen Timms, Principal Advisor, Planning, Strategy and Governance, CERA (second item only)

Moira Underdown, Co-Chairperson, Psychosocial Subcommittee, Community Wellbeing Planners Group (third item only)

Lucy D'Aeth, Co-Chairperson, Psychosocial Subcommittee, Community Wellbeing Planners Group (third item only)

██████████ Advisor, Ministerial and Executive Services, CERA

**Agenda**

Withheld under 9(2)(a)

**1. Build Ready Initiative (CERA)**

Catherine Nesus from CERA and James Webb from the Christchurch City Council (CCC) outlined the Build Ready Initiative. The Initiative is a joint initiative between CERA and CCC and seeks to enable collaboration across agencies, councils, and organisations on the rebuild of community and public facilities. The PowerPoint presentation is attached to the meeting notes as **Attachment A**.

Released under the Official Information Act 1982

- The presentation:
  - covered the work and journey of the joint initiative to date;
  - covered the outcomes sought and the next steps for the initiative; and
  - invited feedback.

*Discussion*

- The Forum noted that it is essential to involve communities and their representative groups in this initiative.
- The Forum commented on the importance of considering how services are delivered as well as about the 'bricks and mortar'.
- The Forum noted that it is important for the Initiative to be publicly marketed and promoted in order to generate awareness about it amongst organisations. It also noted that marketing will help to generate excitement in communities.
- The Forum commented that the special powers made available by the Canterbury Earthquake Recovery Act 2011 will cease in 2016 and queried whether it is being utilised to make amendments to education legislation e.g. the designation of school land preventing other non-education groups from using their facilities. CERA noted that collaborative solutions are being explored and progressed.
- Also in regards to education the Forum asked how the Learning Community Clusters and the Build Ready focus areas would interact and whether there would be any flexibility between the two areas. CERA noted that the Ministry of Education is involved with the Initiative and engaging in discussion about these types of issues.

**2. Lyttelton Recovery Options (CERA)**

Viv Smith and Stephen Timms, of CERA, presented to the Forum in confidence about options for recovery in Lyttelton.

[Redacted]

Withheld under 9(2)(f)(iv)

- The two mechanism options that were discussed were:
  - Environmental Protection Agency (EPA), Resource Management Act 1991; or
  - Recovery Plan, Canterbury Earthquake Recovery Act 2011.

*Discussion*

- The Forum voiced concern that the Lyttelton residents' group was not on the working group. CERA explained that the working group was established in order to collate/develop the information to provide the options to the community. It was also noted that the working group is focussing on the mechanism to be used, not the outcome.
- The Forum also queried how the community engagement would look/work and noted that it is important that the community has confidence in any consultation/engagement process.
- It was noted that should the Recovery Plan option be pursued, its first stage would be a community engagement phase. The Forum considered that a positive aspect of this means that it allows the opportunity to engage with the community 'front on' and quickly get to the key issues.
- The Forum discussed whether the name needed to be changed to reflect the fact that the project is largely focussed around the Lyttelton Port. CERA noted that once the scope of the project has been finalised its name will be confirmed.

Released under the Official Information Act 1982

- The Forum emphasised that the Lyttelton Port can be the 'gateway' to the South Island and the benefits to the Lyttelton community for the Port's recovery should be promoted.
- The Forum noted that the EPA mechanism allows for robust testing of information. CERA assured the Forum that robust testing would also be part of a Recovery Plan should that option be pursued.
- The Forum also commented about getting the transport routes right from Lyttelton to/through the city and noted that this has been an issue since before the earthquakes.
- The Forum stated that its preference was the Recovery Plan option.

### 3. Community in Mind – psychosocial strategy (CERA)

The presentation was delivered in confidence by Moira Underdown and Lucy D'Aeth (Co-Chairpersons of the Community Wellbeing Planners Group's Psychosocial Subcommittee) and supported by Michelle Mitchell and Denise Kidd, of CERA. The presentation focussed on informing the Forum about the Strategy and how it came to be. The PowerPoint presentation is attached to the meeting notes as **Attachment C**.

#### *Discussion*

- The Forum congratulated the group on its 'Free Compliments' and 'All Right?' campaigns and noted both of the campaigns' success and popularity.
- The Forum appreciated the need for the Strategy and agreed with what the Strategy is trying to achieve.
- The Forum suggested that the word 'resilience' is replaced as it has received feedback that the word is not appreciated by the community.
- The Forum was pleased that sport has been noted in the Strategy; given the positive effect sport has physically on bodies as well as its social aspect.
- The Group asked the Forum who and how it thought it should communicate to. The Forum noted that it thought community/ethnic radio stations, the Christchurch Youth Council and school counsellors would all be useful channels of communication.
- The Forum queried how the monitoring and evaluation of the Strategy will be carried out. It was noted that there are many components to the Strategy and monitoring will be carried out as it is possible. It was noted by the presenters that any findings would be of great value to public health in New Zealand.

**Next Meeting – 17 April 2014**

Meeting closed 8:15pm

**JOINT CCC-CERA  
BUILD READY INITIATIVE**


**Christchurch  
City Council**  **CERA**  
Canterbury Earthquake  
Recovery Authority

**How did it come about?**

- August 2013 - First Response Sector Forum as an information sharing exercise.
- December 2013 – Build Ready Working Group formed to foster collaboration on community facility build projects, and the services provided, in suburban Christchurch.
- Joint Project between CCC and CERA.

**WHY AND HOW DID WE GET HERE-  
WHAT IS BUILD READY?**

Catherine Nesus  
CERA  
James Webb  
CCC

**Christchurch  
City Council**  **CERA**  
Canterbury Earthquake  
Recovery Authority

**Purpose**

- The Build Ready initiative is intended to support and enable:
  - **Efficiency:** e.g. fostering collaboration amongst agencies
  - **Effectiveness:** e.g. placing clients and services at the heart of rebuild initiatives.
  - **Replication:** e.g. Identifying opportunities to take positive examples to the rest of CHCH and NZ

in the rebuild of community facilities and services in suburban Christchurch.

Released under the Official Information Act 1982

### Facilities in Scope

Cultural	Public Museums/galleries, marae, cultural spaces, places of worship, public venues, libraries
Sport/Leisure	Indoor & outdoor sport and recreation facilities, aquatic facilities
Service	Service hubs providing one or more community/public services (e.g. psychosocial, community health, emergency services, council and NGO services).
Education	Schools, tertiary and technical institutions, including wananga, adult education.

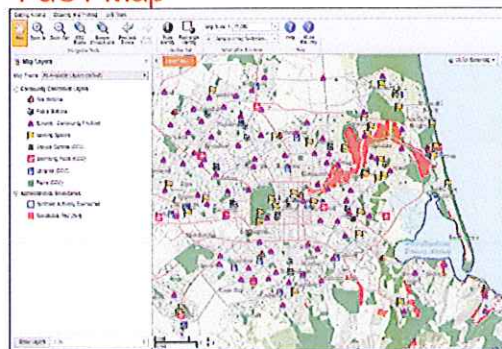
### Deliverables and Objectives

- Live register of current and proposed facilities across Christchurch to help identify opportunities
- Progress maps
  - Including CERA Public and Community Facilities Mapping Tool (PaCT Map)
- Communications with key stakeholders and success stories
- Lessons learned towards replication in Christchurch and NZ

### Build Ready Working Group

- Current Participants
  - CCC – CERA – MoE – NZ Police – NZFS – MSD – Ngai Tahu – PMCoE – CDHB/Pegasus – Corrections – St John – InterChurch Forum - Canterbury Sports Leaders Group
- Incremental participation as more agencies become "build ready".
- Working Group is tasked to:
  - understand each other's priorities and rebuild projects
  - to challenge thinking around what the future of community and public facilities in greater Christchurch is.

### PaCT Map



Released under the Official Information Act 1982

## Two Focus Groups

- CCC Community Profiles used to identify priority communities for a more concerted coordination effort.
  - **Greater Aranui Area**
  - **Greater Hornby Area**
- Focus Groups:
  - have broad community organisation involvement
  - are user driven: members set agenda
  - may, in time, change their area of focus/emphasis
- Other Focus Groups may be established in time.

THANK YOU

We welcome your feedback and questions

Christchurch  
City Council 

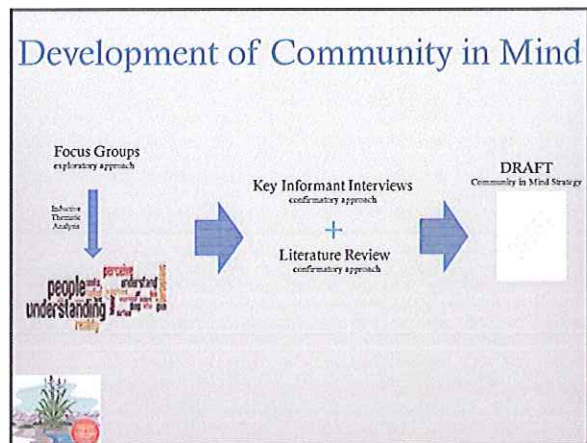
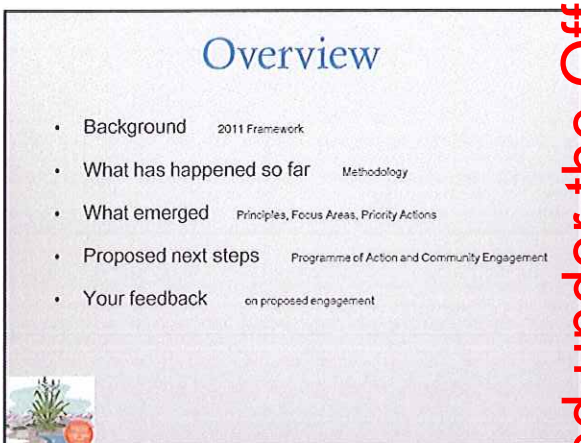
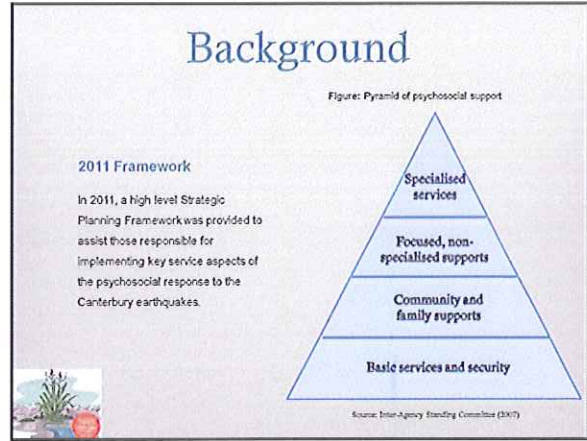
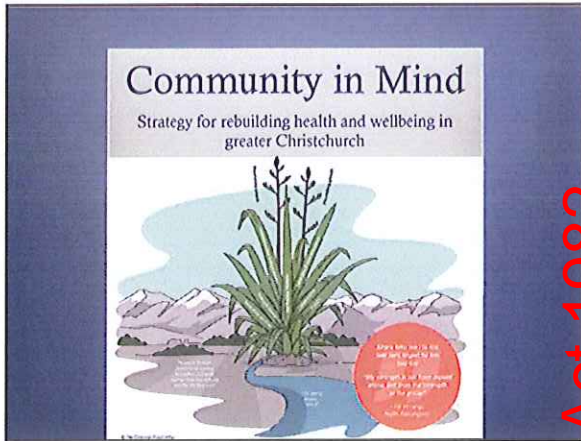
CERA  
Canterbury Earthquake  
Recovery Authority 

## Next Steps

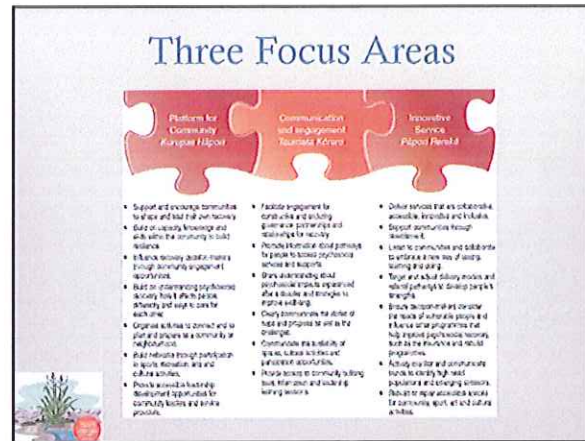
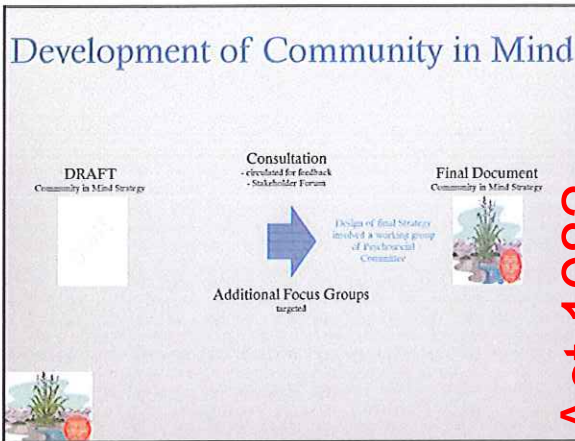
- Strategic Build Ready Workshops
- Focus Group Meetings
- Issue Specific Meetings
- Identification of additional focus areas and sub-groups
- Process Issues and Mitigations
- Communications and Engagement Plan

Released under the Official Information Act 1982





Released under the Official Information Act 1982



### Strategy Principles

*The purpose of the Community in Mind strategy is to guide agencies to develop, target and coordinate their work programmes for the psychosocial recovery of greater Christchurch communities.*

<b>Strengths-based</b>	Focus on the drivers of community strength and resilience. Improve the capacity of people to cope.
<b>Holistic</b>	Consider all the things that help keep people healthy: the determinants of health.
<b>Targeted and evidence based</b>	Use local and international evidence to evaluate and target services to those most in need.
<b>Belonging and connectedness</b>	Recognise that people are part of a whanau, communities and networks which bind them together.
<b>Community in mind</b>	Enabling and empowering communities to shape their own recovery is positive, self-organising and supportive of diversity.
<b>Collaborative</b>	Develop relationship and facilitate working partnerships in ways that complement each other's strengths.

### Focus Area 1: Platform for Community

- Support community led recovery
- Build capacity knowledge and skills within community
- Influence decisions makers through community engagement
- Build understanding of psychosocial recovery and ways to care for each other
- Support activities that connect
- Encourage networks
- Provide accessible leadership development opportunities for community leaders and service providers

Released under the Official Information Act 1982



### Focus Area 2 : Communications & Engagement

- Facilitate engagements for partnerships in recovery
- Promote information about pathways for people to access services and supports
- Share understanding about psychosocial impacts and strategies to improve wellbeing
- Communicate stories of hope and progress
- Provide access to community building tools and information.

### Programme of Action

- Associated with the Strategy is the Programme of Action, which is being developed and will describe how and who will implement this Strategy

*Provisional Structure*  
(could broadly apply to each Priority Action)

- Lead Coordinating agency
- Important details – such as main contact person, Website address, Facebook
- Specification of geographic community or target groups if relevant
- Physical location where further information can be found locally (info hubs, libraries etc.)
- Examples / Case studies / Stories of :
  - existing successful programmes / initiatives
  - emerging initiatives showing signs of success
- Outcome measures that will reflect the principles of the Strategy

### Focus Area 3: Innovative Service

- Deliver collaborative, accessible and inclusive services
- Support communities as they resettle
- Listen to and collaborate with communities
- Service models that build on peoples strengths
- Ensure decision makers consider the needs of vulnerable people, and influence other recovery programmes to improve psychosocial recovery
- Monitor trends
- Repair and rebuild spaces for communities

### Community engagement

- Purpose: *to inform, consult and empower*
  - Raise awareness of Community in Mind
  - Introduce the idea of a Programme of Action to achieve the principles and objectives identified in the Strategy
  - Encourage and enable community and stakeholder participation in the development of the Programme of Action
  - Identify case studies and relevant activities underway
  - Involve the community in their own social recovery

Released under the Official Information Act 1982

## Community engagement

### Proposed Techniques:

- ❖ Community Stories : ie "Good things happen when you least expect it .... Share your story"
  - ❖ Website prompt and story template if needed
  - ❖ Include information in newsletters and email through existing networks
- ❖ Community Talks could be available to both geographic and specific population groups
  - ❖ Ensure it is easy for all to request (verbal, written, email, online)
  - ❖ Online 'request' button
- ❖ Facebook page / website – interactive online information



## Feedback from you...

- Who needs to know?
- How should we communicate with them?
- Any other feedback?



*Through this kind of feedback the final structure of the Programme of Action will be developed*

Released under the Official Information Act 1982