



5 April 2022

[Redacted]

Ref: OIA-2021/22-0782

Dear [Redacted]

Official Information Act request relating to the All-of-Government COVID-19 Situation reports

Thank you for your Official Information Act 1982 (the Act) request received on 20 December 2021. You requested:

“You seem to have changed your approach to redacting a certain part of these documents since your 1 November response to my initial request.

For instance, comparing page 41 of your first response document (3 September report "Protests and Disinformation" section) and page 12 of your second response (8 September report "Compliance" section) shows that the latter is much more heavily redacted, although clearly the two cover the same topic. This is the case for every section covering this topic in your second response.

Are you able to please advise me why your approach has changed? If not, I will refer this to the Ombudsman to check if the redactions in the latter documents are appropriate.

In the meantime, I would like to make a follow up request. I would like to request:

Copies of all COVID-19 Across Government Situation Reports, dated since the beginning of November.”

The timeframe for responding to your request was extended under section 15A of the Act by 40 working days due to a search through a large quantity of information being required, and consultations to be undertaken before a decision could be made on the request. Following this extension, I am now in a position to respond.

Before All-of-Government COVID-19 Situation Reports can be released, the Department of the Prime Minister and Cabinet (DPMC) undertakes consultations internally, and externally with a number of government agencies.

For example, in responding to your previous Official Information Act (OIA) requests for the COVID-19 Across Government Daily Situation Reports, DPMC consulted with the Ministry of Health, the Ministry for Business, Innovation, and Employment, the New Zealand Police, Fire and Emergency New Zealand, the Ministry for Social Development, New Zealand Customs Service, the Ministry for Pacific Peoples, the Ministry for Ethnic Communities, the Ministry of Transport, the Department of Internal Affairs, the Ministry for Primary Industries,

Waka Kotahi, the Ministry of Education, the Department of Corrections, and Te Puni Kōkiri before a response was provided to you.

I note there are instances in DPMC's response to your OIA request dated 1 November 2021 (our ref: OIA-2021/22-0531) where it would appear that the approach taken is different to that taken in our previous response to your OIA request dated 3 September 2021 (our ref: OIA-2021/22-0211). I can confirm however that DPMC was advised to redact the information which was released as part of OIA-2021/22-0531 in OIA-2021/22-0211 following consultation with other government agencies, as the release of the information would have prejudiced the maintenance of the law, including the prevention, investigation, and detection of offences, and the right to a fair trial.

Please find attached a copy of the All-of-Government COVID-19 Situation Reports from 1 November 2021 to 20 December 2021.

Some information has been withheld under the following sections of the Act:

- section 6(c), as the release of the information would be likely to prejudice the maintenance of the law, including the prevention, investigation, and detection of offences and the right to a fair trial;
- section 9(2)(a), to protect the privacy of natural persons, including that of deceased natural persons;
- section 9(2)(b)(ii), as the release of that information would be likely unreasonably to prejudice the commercial position of the person who supplied or who is the subject of the information;
- section 9(2)(ba)(ii), as the release of that information would be likely to damage the public interest; and
- section 9(2)(c), to avoid prejudice to measures protecting the health or safety of members of the public.

In making my decision, I have taken the public interest considerations in section 9(1) of the Act into account.

You have the right to ask the Ombudsman to investigate and review my decision under section 28(3) of the Act.

This response will be published on the Department of the Prime Minister and Cabinet's website during our regular publication cycle. Typically, information is released monthly, or as otherwise determined. Your personal information including name and contact details will be removed for publication.

Yours sincerely



Cheryl Barnes
Deputy Chief Executive, COVID-19 Group

COVID-19: Across Government Situation Report

9 November 2021

Key System Issues & Risks

COVID-19 Cases Increasing

Active COVID-19 cases are expected to increase with the R value approximately 1.35 (as of 5 November). There are currently 2,788 active COVID-19 cases, the highest since the beginning of the outbreak in August. Average daily case numbers are currently at their highest level since the start of the pandemic.

Ministry of Health: 9 November 2021 1.49 PM; Our World in Data, 9 November 2021

- Next steps or mitigations if known: Alert level restrictions are in place to help mitigate community spread, and the COVID-19 Protection Framework will facilitate the application of public health measures alongside the COVID-19 vaccination rollout.

COVID-19 Vaccine New First Doses May Be Plateauing

Given the relatively low level of bookings for a first dose of the COVID-19 vaccine (6,559) at present, and that the number of first doses in the past week fell compared to the previous week, it is possible that there will not be significant increases beyond 90% of the eligible population being vaccinated against COVID-19. 90% of the eligible population have had a COVID-19 vaccine or are booked to receive it. If all current bookings are fulfilled 82% of the population will be fully vaccinated, 7% will have had one dose, and 10% will remain unvaccinated. Vaccination levels amongst Māori and Pasifika communities are 74% and 87% respectively for the first dose, compared to 89% across the total population.

Ministry of Health, 9 November 2021 10.31 AM

- Next steps or mitigations if known: Communications are ongoing to increase vaccination rates.

Mass Protest Activity Risk of Spreading COVID-19

A number of protests have taken place in the last week, with some attendees not complying with rules on gatherings, or observing social distancing/wearing face coverings. This activity could possibly lead to an increased spread of COVID-19. This included a mass protest at Parliament in Wellington (approximately 3,000 attendees) today (9 November).

NZ Police, 4 November 2021. Stuff Accessed 9 November 1.50 PM. Otago Daily Times

- Next steps or mitigations if known: Police were in attendance and will continue to monitor the activism landscape.

COVID-19 in Wastewater Testing Results in Several Regions

Wastewater testing results over the last week showing positive for COVID-19 in Tairāwhiti, Taranaki, and Hawke's Bay have led to a higher than usual number of people turning out for testing. Aside from the risk of COVID-19 in the community, the results have led to uncertainty in these regions. There will also likely be challenges for a response across this many regions. There is also the potential for reputational risk if wastewater testing is shown to be producing false positives. There were also reports of higher numbers at drive-in vaccination centres in Napier and Hastings after the wastewater testing results were reported.

RNZ – Accessed 8 November 2021 1.30 PM, NZ Herald – Accessed 9 November 2021

- Next steps or mitigations if known: Work is ongoing across government to prepare in case a response is required. Repeat testing is taken whenever there is a positive detection to reduce the level of uncertainty.

Capacity to Treat Large Numbers of Severe COVID-19 Cases Constrained

Whilst ICU capacity can currently meet demand, ICU availability is limited in most regions and is likely to be an issue with cases increasing. ICU capacity is available in all DHBs except Hutt Valley, Lakes and Whanganui where all the ICU capacity is being taken up by non-COVID-19 patients. By contrast, the majority of ventilator capacity remains available nationwide.

Ministry of Health: 2 November 2021 1.52 PM, 2.02 PM, RNZ 12 October 2021 11.21 AM, RNZ 21 October 10.07 AM

- Next steps or mitigations if known: The Health Minister mentioned that there is capacity to surge up to 550 ICU or High Dependency Unit beds, however, this will impact some planned operations. In a separate announcement the Minister also noted that about 14,000 extra nurses had been trained to work in an intensive care unit.

MIQ Capacity Limited

There are three quarantine facilities in Auckland. There are 302 out of 674 quarantine rooms available or 45%. With the continued implementation of community self-isolation providing support for positive cases to self-isolate, quarantine occupancy has stayed approximately consistent for the last three days. More cases are likely to come into MIQ as referrals come through ARPHS and case numbers grow. The Naumi in Auckland is being used for a small number of Community Close Contacts, where home self-isolation is not possible. There are currently 21 rooms available for this group. There remains a small number of quarantine rooms currently available in Christchurch and Wellington maintained for usual MIQ border operations (62 and 11 rooms respectively). There are 74 out of 110 MIQ quarantine rooms at Amohia in the Waikato region that are unoccupied or 67%.

MBIE, 9 November 11.26 AM, data as at 9am 9 November

- Next steps or mitigations if known: Options continue to be explored should quarantine capacity be reached.

Key System Issues & Risks

Anti-COVID-19 Vaccine Activism - Concerns Over Disruption to Future COVID-19 Information Events and Physical Attacks

A recent COVID-19 information session organised by the Invercargill Rotary Club attended by ethnic leaders, was interrupted by 'Voices for Freedom' causing stress and anxiety amongst members of the public in attendance, by shouting messages in an aggressive manner, and leaving many community members feeling unsafe with some leaving the room. Ethnic leaders have raised concerns about the impact of the interruption and have suggested security support for future events.

A councillor for the Maungakiekie-Tāmaki ward in Auckland was attacked as she visited staff at a Pasifika Family health Group in Panmure which had been vandalised the night before. The councillor was approached by three men who called her 'scum' and threatened to vandalise her car. The attack on a local councillor also highlights the potential risk to safety of prominent vaccine advocates, particularly those in ethnic communities.

Ministry for Ethnic Communities – 5 November 2021, 5.00 PM

- Next steps or mitigations if known: Southland Multicultural Council intend to reach out to attendees to check on wellbeing and an update will be reported back to the Ministry for Ethnic Communities

Impact of Higher COVID-19 Cases Requiring Re-Orientation

The potential for higher COVID-19 cases in the community, will likely require re-orientation regarding how organisations respond to cases of COVID-19 in the workplace.

Public Service Commission – 9 November 2021, 4.48 PM

- Next steps or mitigations if known: The Public Service Commission will be working with agencies to understand their ability to meet their workforce needs, including to deliver on responsibilities under key COVID-19 work programmes, including identifying if system support may be required, e.g. deployment.

Māori Health Workforce Battling Fatigue Amidst Higher COVID-19 Case Numbers

Māori health care providers in Auckland and Northland are reporting high levels of fatigue, particularly those administering COVID-19 vaccines or COVID-19 tests. They have also indicated concern that the workload will increase as restrictions ease, with some health workers indicating they are unsure how they will cope, with some burn out already being reported amongst staff.

1News. Māori health workforce battle fatigue as Covid cases rise – Accessed 8 November 2021 1.30 PM

- Next steps or mitigations if known: A local health provider has reported that staff are being rotated into different roles, whilst the Ministry of Health is confident the government is providing enough support to front line staff.

Delays to Surgery Due to COVID-19 Prioritisation

Deferrals of surgery due to the COVID-19 outbreak continue to pose a risk to health, whilst plans to reduce the current backlog have been impacted by the latest outbreak. At the start of October it was reported that the Tairāwhiti District Health Board had the highest number of deferrals, at 28.06 per 1,000 people, compared to a national average of 11.99 per 1,000 people. Tairāwhiti Health Board, reported that the decision to implement deferrals to surgery is based on a risk to populations and staff, with high suspicion of cancer referrals and fractures remaining a priority.

Stuff – Accessed 8 November 2021, 2.38 PM

- Next steps or mitigations if known: Further budget has been provided to DHBs to help them get on top of the waiting list

Disagreement Over Māori Health Data

The Chief Executive of Whānau Ora has requested immediate access to Māori health data to help in the vaccination drive amongst Māori communities. The Ministry of Health have however stated that it is not appropriate to share individually identifiable health data. A potential continuation of the disagreement may delay increasing vaccine uptake among vulnerable communities.

Waatea News – Accessed 8 November 2021, 2.08 PM

- Next steps or mitigations if known: The High Court has ordered the Ministry of Health to reconsider its decision. The Ministry of Health have instead invited the Whānau Ora Commissioning Agency to work with the Ministry, relevant iwi and local service delivery providers to identify communities where vaccination outreach is most needed, however, this has not been accepted by Whānau Ora.

Challenges for Refugee Access to COVID-19 Vaccination Records

Former refugees who have a certificate of identity as their main form of identification will not be able to register to view their COVID-19 vaccination records online via My Covid Record.

Ministry for Ethnic Communities – 5 November 2021, 5.00 PM

- Next steps or mitigations if known: The issue has been raised with the Ministry of Health and the DPMC.

COVID-19: Across Government Situation Report

9 November 2021

Health

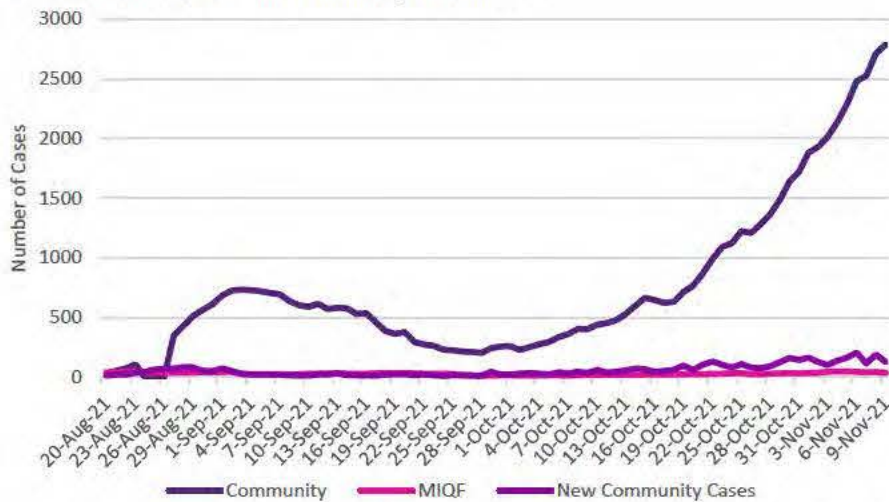
Active COVID-19 Cases Increasing

The number of active COVID-19 community cases has increased to 2,788 on 9 November 2021, the highest level since the start of the outbreak.

The rolling 7-day average is 148 cases per day compared to 126 per day on average in the previous week (27 October – 2 November).

Ministry of Health: 9 November 1.49 PM

Active COVID-19 Cases in Community and MIQF



Vaccination Amongst Those Infected Since August

49% of those infected with COVID-19 since August to present have been unvaccinated, with a further 20% ineligible for vaccination as they are under 12 years of age. 75% of those hospitalised have been unvaccinated or ineligible, and 20% have received just one dose of the vaccine. Only 3% of those hospitalised were fully vaccinated at least 14 days prior to the infection.

Ministry of Health, 8 November 2021, 1.00 PM

Health System

There has been an average of 71 people in hospital over the last week (up from 46 the week before), 6 cases in ICU (up from 3 in the previous week), and 3 on ventilators (up from 1 in the previous week). All those currently in ICU are in the Auckland area. In total there have been 6 deaths associated with this outbreak.

Ministry of Health: 9 November 2021 1.49 PM

ICU Beds and Ventilators

There is ventilator and ICU capacity available at all DHBs. Available capacity at Auckland DHB is less than 5 ICU beds and just under 55 ventilators. Waikato DHB has just over 5 ICU beds and under 30 ventilators available.

Ministry of Health: 8 November 2021 2.13 PM

PPE

The current PPE usage rate is at low pandemic usage rates. There is currently eight weeks of PPE supply at high pandemic response usage rates, and 32 weeks at medium pandemic response usage rates.

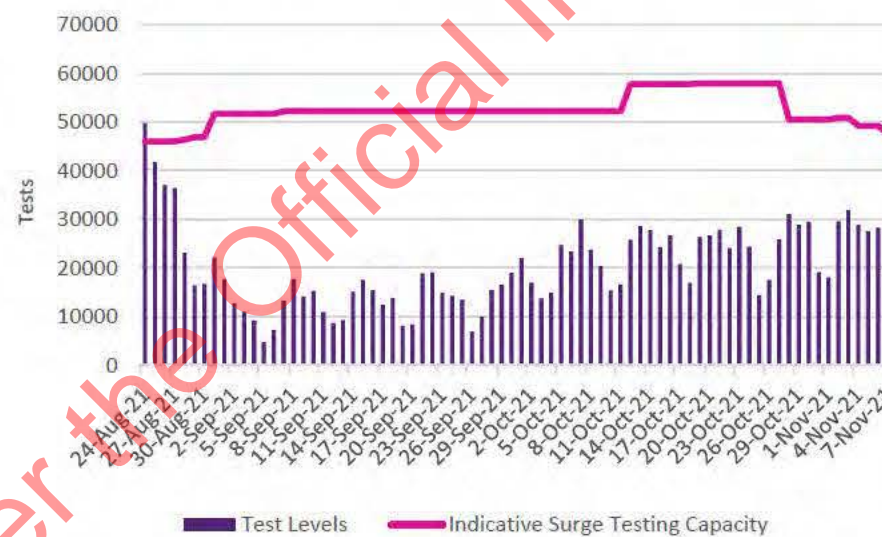
Ministry of Health: 8 November 2021 11.12 AM

Testing Levels

Testing levels remain below the peak of 49,745 on 24 August, at 17,481 on 1 November. The 7-day rolling average was 26,045 over the past 7 days compared to 24,304 for the previous week, suggesting testing levels have increased over the last week.

Ministry of Health: 9 November 2021 9.59 AM

Testing Capacity vs Tests Administered



Themes of Calls to Healthline and '1737 Need to Talk?'

On average there were 6,685 calls to Healthline each day in the last week, down from 7,095 over the previous week. On average 20% were sent for testing.

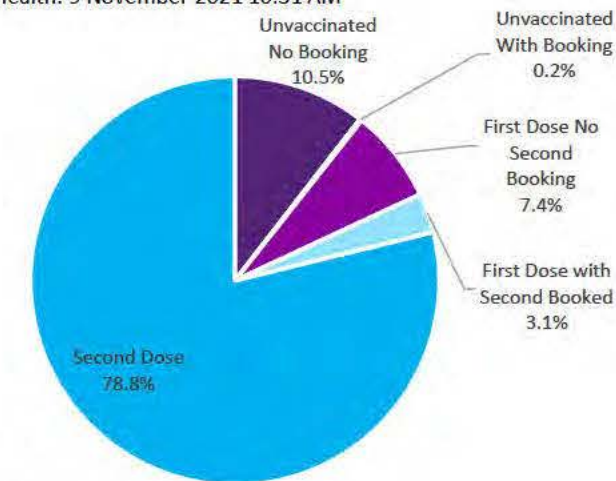
The main themes of calls were related to callers looking for information and clarification on the various alert levels, and calls related to exposure events. The number of calls regarding mental health and addiction followed the usual pattern of higher volume of calls on Mondays, with anxiety and concern regarding ongoing lockdowns continuing to be a prominent theme including their impact on work/study and travel restrictions. Social friction in domestic relationships also continued to be a prominent theme of calls.

Ministry of Health: 9 November 2021 1.49 PM

Vaccinations and Bookings

There have been 3,760,824 first doses of vaccine administered and 3,317,182 people have now been fully vaccinated. There are 137,306 future bookings, with 6,559 for first dose and 130,747 for second dose. This means approximately 90% of the eligible population have had a vaccination or made a booking to be vaccinated. Approximately 10% of the eligible population have not received at least a first dose and do not have a booking.

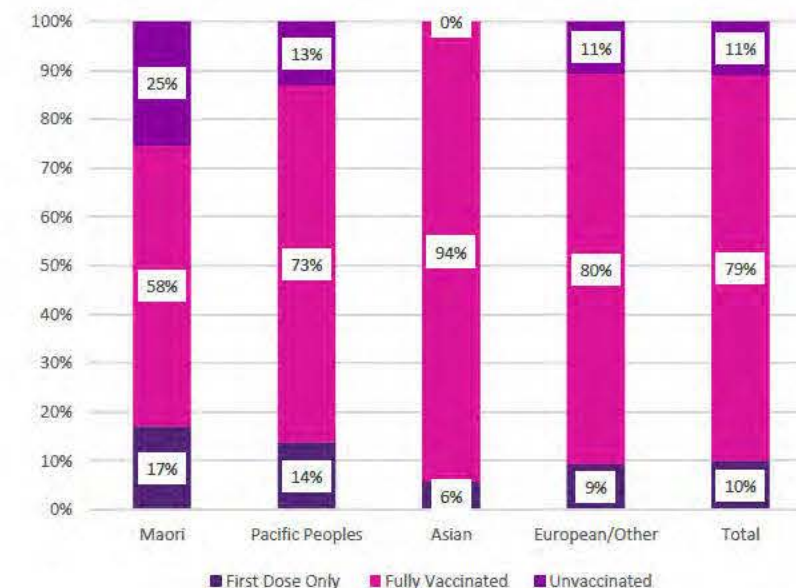
Ministry of Health: 9 November 2021 10.31 AM



Vaccination Rate by Ethnicity

Vaccination rates amongst Māori and Pacific Peoples remain below that of Asian and European ethnic groups. Young Māori continue to be the least vaccinated demographic.

Ministry of Health: 9 November 2021 10.31 AM



COVID-19: Across Government Situation Report

9 November 2021

Social & Community

Public Sentiment

Analysis of the online public conversation during 31 October – 3 November revealed that conversation related to all aspects of COVID-19 fell by 1%. The volume of conversation around all subjects decreased except for conversation on the topics of 'Timeframe' and 'Vaccine Rollout' which increased by 10% and 6% respectively.

It was noted that the conversation around most topics became more polarised, with sentiment shifting away from neutral to either positive or negative. Over the 4 days to 3 November, the biggest positive shift in sentiment was related to the topic of 'Enforcement' while the biggest negative shift in sentiment was related to the topic of the 'Economy'.

DPMC: 4 November 2021 6.44 PM

Infringements, Prosecutions, and Warnings – Low and Falling

The number of infringements continues to drop since Auckland shifted from AL4 to AL3, with the last week recording the lowest number since the outbreak began. Infringements over the 7 days to 3 November 2021 totaled 122, compared to 207 in the 7 days prior. Prosecutions and warnings and youth referrals also remained relatively low, at 3 and 2 respectively.

New Zealand Police: 5 November 2021, 10.08 AM

Note: As of 23.59 PM on 21 September, Auckland moved from AL4 to AL3.

Infringements, Warnings and Prosecutions under AL3 and AL4 – Auckland



Note: Infringements include non-essential travel, failure to physically distance, wear a mask in premises or on public transport, comply with Orders or the Health Act, close premises, display a QR code, and organising a gathering outdoors.

Protest Activity

6(c)
[Redacted text]

There were also other protests at the Governor General's house in Auckland (150 attendees), New Plymouth (approximately 20 attendees), on the Northern Auckland border (30 – 40 attendees) and Invercargill (150 attendees).

NZ Police, 4 November 2021. Stuff Accessed 9 November 1.50 PM. Otago Daily Times

On 3 November the Prime Minister cancelled a visit to a vaccination clinic in Whanganui after approximately 1,000 anti-COVID-19 vaccine protesters gathered outside, preventing people from accessing the site.

6(c)
[Redacted text]

On 2 November, a group of anti-COVID-19 vaccine protesters displayed signs outside the Golden Bay High School. The protest was in response to a COVID-19 vaccination clinic being held in the school for eligible students.

NZ Police, 4 November 2021. Stuff Accessed 9 November 1.50 PM

Released under the Official Information Act 1982

COVID-19: Across Government Situation Report

9 November 2021

Key Contacts

Purpose	Agency	Contact
Queries from Elected Officials	DPMC	electedofficials@dpmc.govt.nz s9(2)(a)
Business Queries	MBIE	AL4BusinessServices@mbie.govt.nz 0800 424 946
COVID-19 Health Advice	Healthline	0800 358 5453
To Report a Breach	Police	COVID-19 compliance Unite against COVID-19 (covid19.govt.nz)
Information/Apply for Wage Subsidy	MSD	https://www.workandincome.govt.nz/covid-19/wage-subsidy/index.html
Resurgence Payment Support	IRD	https://www.ird.govt.nz/covid-19/business-and-organisations/resurgence-support-payment
Exemption requests for Alert Level 4 measures <i>Note that if you have a general enquiry where someone is simply asking whether or not something is permitted and you are able to respond based on the Order, you can do so. If you are unclear at all, please forward to this new email.</i>	MoH	https://www.health.govt.nz/our-work/diseases-and-conditions/covid-19-novel-coronavirus/covid-19-health-advice-public/covid-19-travel-within-new-zealand
This report is produced by the Insights and Reporting Team in DPMC's COVID-19 Group. If you have any questions, concerns, or feedback, please do not hesitate to contact us.		COVID-19insights@dpmc.govt.nz

COVID-19: Across Government Situation Report

16 November 2021

Key System Issues & Risks

COVID-19 Cases Increasing in Volume and Spread

Active COVID-19 cases are expected to increase with the R value approximately 1.25 (as of 10 November). There are currently 3,837 active COVID-19 cases, the highest since the beginning of the outbreak in August. The 7-day rolling average numbers case is currently at 187, the highest level since the start of the pandemic. There are current active cases in Northland, Auckland, Waikato, Lakes, Taranaki, Midcentral, Wairarapa and Canterbury DHBs.

Ministry of Health: 16 November 2021 2.19 PM; Our World in Data, 16 November 2021

- Next steps or mitigations if known: Alert level restrictions are in place to help mitigate community spread, and the COVID-19 Protection Framework will facilitate the application of public health measures alongside the COVID-19 vaccination rollout.

COVID-19 Vaccine New First Doses May Be Plateauing

There remains a relatively low level of bookings for a first dose of the COVID-19 vaccine (4,096) at present, which suggests that vaccination rates could be plateauing, however it should also be noted, that the number of first doses over the last week increased slightly compared to the previous week, which suggests that many people received walk in vaccinations. It is possible that there will not be significant increases beyond 90% of the eligible population being vaccinated against COVID-19. 90% of the eligible population have had a COVID-19 vaccine or are booked to receive it. If all current bookings are fulfilled 83% of the eligible population will be fully vaccinated, 7% will have had one dose, and 10% will remain unvaccinated. Vaccination levels amongst Māori and Pasifika communities are 77% and 88% respectively for the first dose, compared to 90% across the total eligible population.

Ministry of Health, 16 November 2021 10.16 AM

- Next steps or mitigations if known: There are various strategies or approaches to increase vaccination rates currently being implemented across the country.

Capacity to Treat Large Numbers of Severe COVID-19 Cases Constrained

Whilst ICU capacity can currently meet demand, ICU availability is limited in most regions and is likely to be an issue with cases increasing. ICU capacity is available in all DHBs except Hawkes Bay and West Coast where all the ICU capacity is being taken up by non-COVID-19 patients. By contrast, the majority of ventilator capacity remains available nationwide.

Ministry of Health: 16 November 2021 2.19 PM

- Next steps or mitigations if known: The Health Minister mentioned that there is capacity to surge up to 550 ICU or High Dependency Unit beds, however, this will impact some planned operations. In a separate announcement the Minister also noted that about 14,000 extra nurses had been trained to work in an intensive care unit.

Vaccine Mandates May Cause Issues With Staffing in Key Services

Vaccine mandates may cause staffing issues in several services, including education, health, police, and the fire service, with details listed below.

- **Health** - Approximately 2,000 clinical and non-clinical health staff remain unvaccinated, equivalent to approximately 2.7% of the estimated 75,000 health board employees. DHBs said that patient care would not suffer as a result. It was noted that midwifery may have a higher proportion of people who do not want to be vaccinated. Only a handful of Health union members at risk of being stood down for not being vaccinated have asked for help from their union. 15 specialist doctors or dentists out of a union membership of 5,000 requested help from their union, whilst fewer than 10 nurses have resigned or given up union membership out of a total membership of 53,000.
- **Education** - The COVID-19 vaccine mandate for teachers implemented on 15 November has led to concerns that schools may experience staff shortages, as teachers who have not received their first dose by today will be stood down until they are vaccinated.
- **Fire Service** - There are concerns amongst fire brigades about emergency coverage due to COVID-19 vaccine mandates. Fire fighters were mandated to get their first dose of the COVID-19 vaccine by 15 November, however this has been extended to 29 November 2021, to ensure the level and standards of response can be maintained. Prior to the extension, reported concerns included the short length of time between the mandate being announced and its implementation and the fact that volunteers make up around 80% of the 13,000 operational and community workers is also a concern. There are also fears as to whether smaller rural stations could continue to operate if firefighters do not get vaccinated.
- **Police** - It is reported that a future COVID-19 vaccine mandate for police could lead to a staffing shortage, which may cause issues for policing alert level boundaries as well as maintaining usual police activity.

NZ Herald: 15 November 2021, 10.25 AM, Stuff: 15 November 2021 11.33 AM, Ministry of Health 9 November 2021, 1 news: 15 November 2021 11.09 AM, Stuff: 15 November 2021, 11.52, RNZ 15 November 2021, 11.52 AM, 1 News: 15 November 2021, 3.55 PM, Fire and Emergency 15 November 2021 3.43 PM, RNZ: 15 November 2021, 3.55 PM, RNZ 16 November 2021 as of 7.00 AM Stuff 16 November 2021, 4.43 PM

- Next steps or mitigations if known: The Ministry of Education has been working intensively with schools and kura over the last week, working with them to develop school-specific solutions. As of end-Monday, MOE anticipated that only a handful of schools will need to apply for the exemption on the grounds of significant disruption. MOE will continue to work with schools to respond to challenges as they emerge. As with other departments, the Ministry of Health, Police, and Fire and Emergency are working to mitigate risk across their organisation.

Key System Issues & Risks

MIQ Capacity Limited

There are three quarantine facilities in Auckland. There are 211 quarantine rooms available out of 674 (31%). Over the last week, case numbers in Auckland have increased as have referrals from ARPHS which has resulted in more people entering a quarantine facility. There are still several positive cases self-isolating, and these are supported by community care. The Naumi in Auckland is still being used for a small number of Community Close Contacts, where home self-isolation is not possible. There are currently 27 rooms available for this group.

There remains a small number of quarantine rooms currently available in Christchurch and Wellington maintained for usual MIQ border operations (67 and 12 rooms respectively). There are 80 MIQ quarantine rooms unoccupied out of the 110 available at Amohia in the Waikato region (73%).

MBIE, 16 November 9.28 AM, data as at 8am 15 November

- Next steps or mitigations if known: Options are being explored for if quarantine capacity is reached.

Elective Surgeries Cancellations Causing Backlogs

An estimated 102,959 elective surgeries were cancelled between 15 August (2 days before the current COVID-19 Delta variant outbreak), and 24 October. All elective surgeries were mandated to be paused during alert level 4, resuming across DHBs in the move to alert level 3. Auckland has been particularly badly affected by the situation, with Counties Manukau DHB, having 33% of all cancellations overall in that period. Of this total, 6,550 were inpatient procedures, i.e. procedures that take place in hospital, and 10,629 CT, MRI and ultra-sound scans (used to diagnose conditions such as cancer) cancelled across the country.

Stuff: 15 November 2021, 11.27 AM

- Next steps or mitigations if known: The government made \$282.5 million available in 2020 over three years, to reduce the backlog as part of the 2020 budget with another \$90 million made available this year and \$50 million made available to pay for any extra facilities required.

Anti-COVID-19 Vaccine Mandate Protestors Threaten to Cause Further Traffic Gridlock

Activist group, the Freedoms & Rights Coalition, are threatening to block traffic in Auckland, Wellington and Christchurch unless the government revoke workplace vaccine mandates. According to online posts, the group has threatened to use cars, trucks, and tractors to block roads in what the group is referring to as the "Great Gridlock". The group has already begun taking action, causing delays in Auckland, Wellington and Christchurch over the weekend.

NewstalkZB: 15 November 2021, 10.48 AM, Stuff: 15 November 2021, 10.48 AM,

- Next steps or mitigations if known: New Zealand Police continue to work with NZTA and local bodies to mitigate the impact of gridlock protest type events on public travel and essential services.

Released under the Official Information Act 1982

COVID-19: Across Government Situation Report

16 November 2021

Health

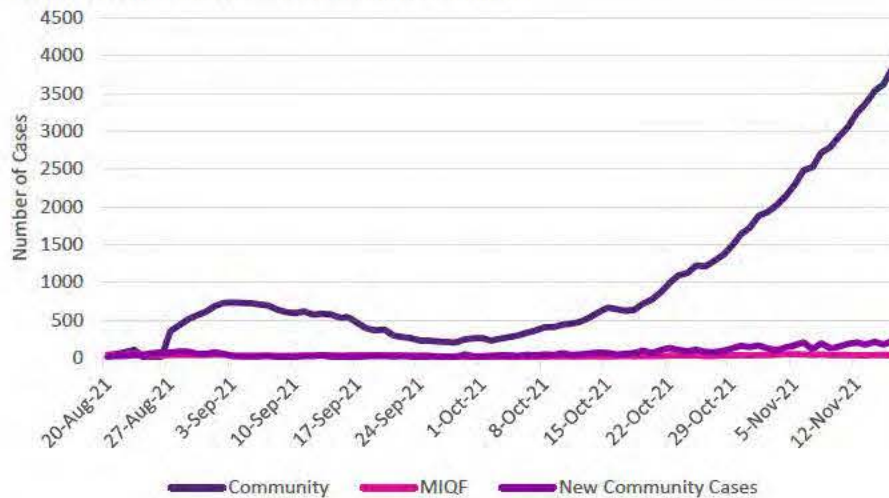
Active COVID-19 Cases Increasing

The number of active COVID-19 community cases has increased to 3,837 on 16 November 2021, the highest level since the start of the outbreak.

The rolling 7-day average is 187 cases per day compared to 148 per day on average in the previous week (9 October – 3 November).

Ministry of Health: 16 November 2021 2.19 PM

Active COVID-19 Cases in Community and MIQF



Vaccination Amongst Those Infected Since August

46% of those infected with COVID-19 since August to present have been unvaccinated, with a further 21% ineligible for vaccination as they are under 12 years of age. 74% of those hospitalised have been unvaccinated or ineligible, and 20% have received just one dose of the vaccine. Only 4% of those hospitalised were fully vaccinated at least 14 days prior to the infection.

Ministry of Health, 16 November 2021, 1.00 PM

Health System

There has been an average of 88 people in hospital over the last week (up from 71 the week before), 9 cases in ICU (up from 6 in the previous week), and 4 on ventilators (up from 3 in the previous week). All but those currently in ICU are in the Auckland area, with 1 in Waikato. In total there have been 9 deaths associated with this outbreak.

Ministry of Health: 16 November 2021 2.19 PM

ICU Beds and Ventilators

There is ventilator and ICU capacity available at all DHBs, except Hawkes Bay and West Coast where all ICU capacity is in use by non-COVID patients. Available capacity at Auckland DHB is over 15 ICU beds and around 50 ventilators. Waikato DHB has just under 10 ICU beds and over 30 ventilators available.

Ministry of Health: 16 November 2021 2.19 PM

PPE

The current PPE usage rate is at low pandemic usage rates. There is currently eight weeks of PPE supply at high pandemic response usage rates, and 32 weeks at medium pandemic response usage rates.

Ministry of Health: 15 November 2021 12.48 PM

Testing Levels

Testing levels remain below the peak of 49,745 on 24 August, at 21,673 on 15 November. The 7-day rolling average was 27,072 over the past 7 days compared to 26,045 for the previous week, suggesting testing levels have increased over the last week.

Ministry of Health: 16 November 2021 9.52 AM

Testing Capacity vs Tests Administered



Themes of Calls to Healthline and '1737 Need to Talk?'

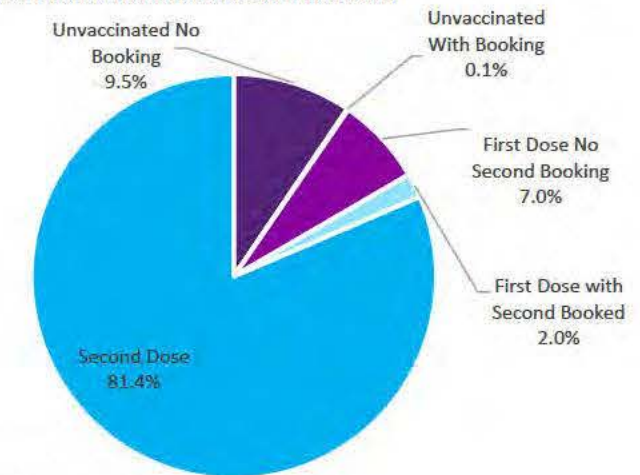
On average there were 6,847 calls to Healthline each day in the last week, up slightly from 6,685 over the previous week. On average 19% were sent for testing. Call volumes remained highest in the east and central north island regions yesterday. The main themes of calls were Waikato alert level changes, schools reopening in Auckland, questions around border and boundary crossings and calls from people who are either COVID-19 cases or living with a positive case seeking information. The Mental Health and Addiction service remains at capacity.

Ministry of Health: 16 November 2021 2.19 PM

Vaccinations and Bookings

There have been 3,806,051 first doses of vaccine administered and 3,427,732 people have now been fully vaccinated. There are 86,391 future bookings, with 4,096 for first dose and 82,295 for second dose. This means approximately 90% of the eligible population have had a vaccination or made a booking to be vaccinated. Approximately 10% of the eligible population have not received at least a first dose and do not have a booking.

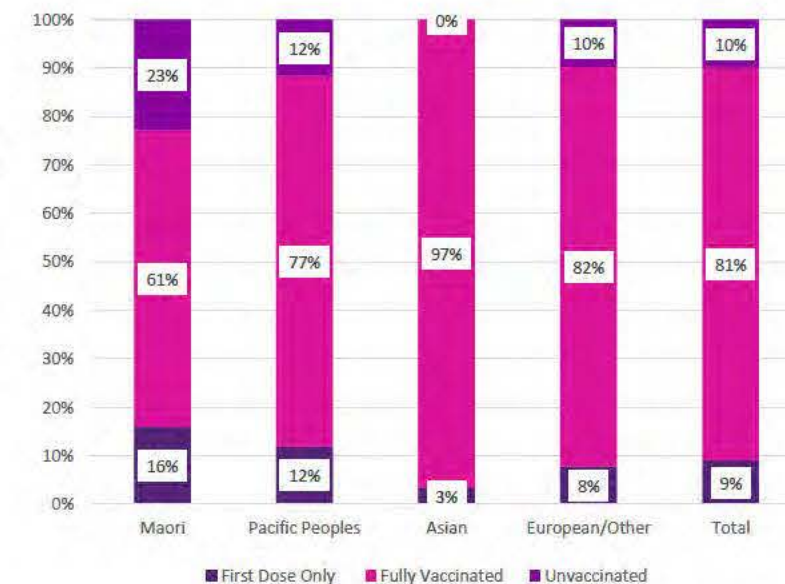
Ministry of Health: 16 November 2021 10.16 AM



Vaccination Rate by Ethnicity

Vaccination rates amongst Māori and Pacific Peoples remain below that of Asian and European ethnic groups. Young Māori continue to be the least vaccinated demographic.

Ministry of Health: 16 November 2021 10.16 AM



COVID-19: Across Government Situation Report

16 November 2021

Social & Community

Public Sentiment

Analysis of the online public conversation during 8 November –11 November revealed that conversation related to all aspects of COVID-19 increased by 16%. The volume of conversation around all subjects increased, with the subject of domestic violence seeing the biggest volume increase, up 48%

It was noted in the conversation around MIQ and self/home isolation, that some believe that returnees who are fully vaccinated are low enough risk to not have to go through the MIQ system. Other believe that MIQ should be used for COVID-19 positive New Zealanders, particularly those who cannot isolate at home or require care, rather than returnees who are fully vaccinated or low-risk. There was also conversation showing that people see deaths in MIQ and during at home isolation, as a sign that the system is unsafe.

DPMC: 12 November 2021 5.26 PM

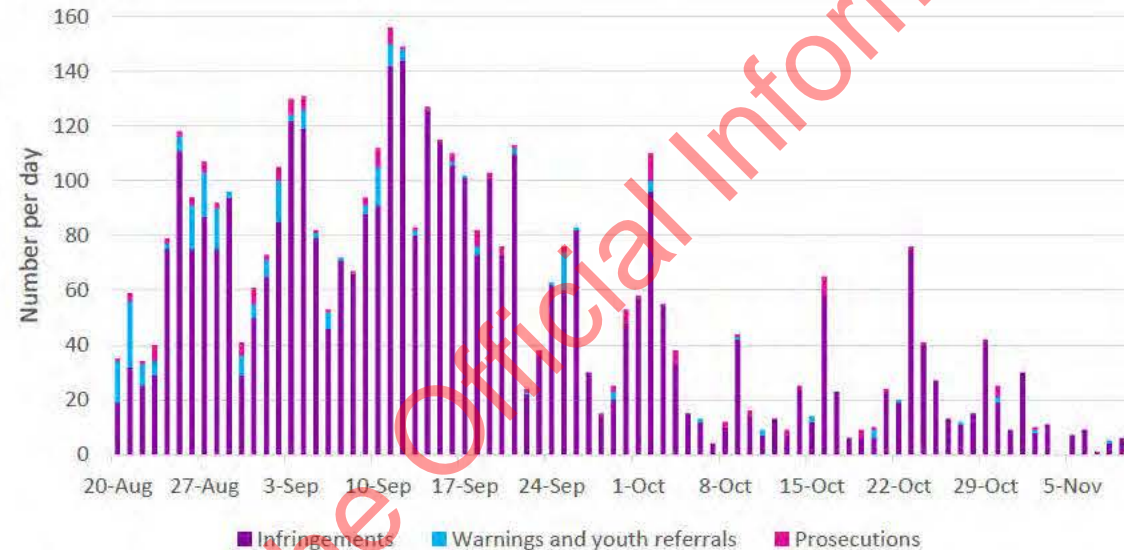
Infringements, Prosecutions, and Warnings – Low and Falling

The number of infringements continues to drop since Auckland shifted from AL4 to AL3, with the lowest number of infringements in the last week, since the outbreak began. Infringements over the 7 days to 10 November totaled 30, compared to 133 in the 7 days prior. Prosecutions and warnings and youth referrals also remained relatively low, at 0 and 3 respectively.

New Zealand Police: 12 November 2021, 12.03 PM

Note: As of 23.59 PM on 21 September, Auckland moved from AL4 to AL3.

Infringements, Warnings and Prosecutions under AL3 and AL4 – Auckland



Note: Infringements include non-essential travel, failure to physically distance, wear a mask in premises or on public transport, comply with Orders or the Health Act, close premises, display a QR code, and organising a gathering outdoors.

Protest Activity

6(c)

[Redacted text]

MP Kieran McAnulty was recently verbally abused by a COVID-19 anti-vaccination protestor during a speaking event in Wairarapa. The attack was filmed. Subsequently he received death threats. The police have been notified.

COVID-19 Response Minister Chris Hipkins has reported that one of his offices has been targeted by COVID-19 anti-vaccine protests.

NZ Police, 12 November 2021. Newstalkz 13 November 11.01 AM.
RNZ 16 November 2021, 5.09 PM

Released under the Official Information Act 1982

COVID-19: Across Government Situation Report

16 November 2021

Key Contacts

Purpose	Agency	Contact
Queries from Elected Officials	DPMC	electedofficials@dpmc.govt.nz s9(2)(a)
Business Queries	MBIE	AL4BusinessServices@mbie.govt.nz 0800 424 946
COVID-19 Health Advice	Healthline	0800 358 5453
To Report a Breach	Police	COVID-19 compliance Unite against COVID-19 (covid19.govt.nz)
Information/Apply for Wage Subsidy	MSD	https://www.workandincome.govt.nz/covid-19/wage-subsidy/index.html
Resurgence Payment Support	IRD	https://www.ird.govt.nz/covid-19/business-and-organisations/resurgence-support-payment
Exemption requests for Alert Level 4 measures <i>Note that if you have a general enquiry where someone is simply asking whether or not something is permitted and you are able to respond based on the Order, you can do so. If you are unclear at all, please forward to this new email.</i>	MoH	https://www.health.govt.nz/our-work/diseases-and-conditions/covid-19-novel-coronavirus/covid-19-health-advice-public/covid-19-travel-within-new-zealand

This report is produced by the Insights and Reporting Team in DPMC's COVID-19 Group. If you have any questions, concerns, or feedback, please do not hesitate to contact us.	COVID-19insights@dpmc.govt.nz
--	--

Released under the Official Information Act 1982

Key System Issues & Risks

COVID-19 Cases Increase, Growth Rate Slows

Though the number of active COVID-19 cases continues to increase, the growth rate is beginning to slow, but is expected to increase again in the future. The R Value in October was typically between 1.2 – 1.3, falling to a range of 1.1 – 1.2 over the first weeks of November and is estimated to have been between 1.0 – 1.1, however more recent estimates carry a wider range of uncertainty. The growth rate is likely to increase as restrictions ease moving into the COVID Protection Framework (CPF). There are currently 4,801 active COVID-19 cases, the highest since the start of the pandemic. The 7-day rolling average number of cases is currently at 185, which shows a slight decrease from peak levels last week. There are current active cases in 13 of the 20 DHBs in New Zealand. There are active cases in 11 DHBs in the North Island including Northland, Auckland, Counties Manukau, Waitemata, Waikato, Bay of Plenty, Lakes, Taranaki, MidCentral, Wairarapa and Capital and Coast. There are active cases across 2 DHBs in the South Island, including Canterbury and Nelson Marlborough.

Ministry of Health: 23 November 2021 2.06 PM; Our World in Data, 10 November 2021; NZ Herald 23 November 2021 8:10 AM

- Next steps or mitigations if known: Alert level restrictions are in place to help mitigate community spread, and the COVID-19 Protection Framework will facilitate the application of public health measures alongside the COVID-19 vaccination rollout.

COVID-19 Vaccination New First Bookings Plateauing

Overall COVID-19 vaccination rates appear to be plateauing (see the chart later in this report). 91% of the eligible population have had a COVID-19 vaccine or are booked to receive it. There remains a relatively low level of bookings for a first dose of the COVID-19 vaccine (2,940) at present. If all current bookings are fulfilled a minimum of 84.8% of the eligible population will be fully vaccinated, 6.6% will have had one dose, and 8.5% will remain unvaccinated. Some walk-in bookings are also expected. Vaccination levels amongst Māori and Pasifika communities are 79.5% and 89.6% respectively for the first dose, compared to 91% across the total eligible population.

Ministry of Health: 23 November 2021 10.38 AM

- Next steps or mitigations if known: There are various strategies or approaches to increase vaccination rates currently being implemented across the country.

Prevalence of COVID-19 Amongst Returnees Still Higher Than the General Population But Actual Numbers Less Than New Cases Within New Zealand

Recent case numbers in the population have been significantly higher than amongst returnees in recent weeks, however proportionally prevalence of COVID-19 amongst returnees remains much higher than in the New Zealand population. Over the 7 days to 15 November 2021, there was a 7-day rolling average of approximately 1 case, amongst arrivals to New Zealand currently in MIQ, which equates to approximately 3.3 daily cases per 1,000 arrivals. Over the same period there was a 7-day rolling average of approximately 173 daily cases in the community, which equates to approximately 0.03 daily cases per 1,000 population. This suggests a much higher prevalence of COVID-19 amongst arrivals than in the general New Zealand population.

Ministry of Health: 15 November 2021, 1.31 PM, MBIE: 16 November 2021 11.47 AM

- Next steps or mitigations if known: The government continues to assess its decision to use MIQ for new arrivals compared to at home isolation.

Capacity to Treat Large Numbers of Severe COVID-19 Cases Constrained

Whilst ICU capacity can currently meet demand, ICU availability is limited in most regions and is likely to be an issue with cases increasing. ICU capacity is available in all DHBs with lowest capacity Canterbury, South Canterbury and West Coast. Ventilator capacity remains available across all DHB's except Wairarapa.

Ministry of Health: 23 November 2021 2.06 PM

- Next steps or mitigations if known: The Health Minister mentioned that there is capacity to surge up to 550 ICU or High Dependency Unit beds, however, this will impact some planned operations. In a separate announcement the Minister also noted that about 14,000 extra nurses had been trained to work in an intensive care unit.

MIQ Capacity Limited

There are three quarantine facilities in Auckland. There are 280 quarantine rooms available out of 674 in Auckland. Over the last week, case numbers in Auckland have stayed relatively similar to the week before with referrals from ARPHS ongoing which has resulted in more people enter a quarantine facility. There is a number of positive cases self-isolating who are supported by community care. The Naumi in Auckland is still being used for a small number of Community Close Contacts, where home self-isolation is not possible. There are currently 23 rooms available for this group.

There remains a small number of quarantine rooms currently available in Christchurch and Wellington maintained for positive border returnees and community cases (65 and 12 rooms respectively). Late last week a small number of community cases tested positive in Christchurch and were moved to a quarantine facility. There are 66 MIQ quarantine rooms unoccupied out of the 110 available at Amohia in the Waikato region.

MBIE, 23 November 12.02 PM, data as at 8am 22 November

- Next steps or mitigations if known: Options are being explored should quarantine capacity be reached across the regions.

COVID-19: Across Government Situation Report

23 November 2021

Key System Issues & Risks

Vaccine Mandates May Cause Issues With Staffing in Key Services

Vaccine mandates may cause staffing issues in several services, including education, health, the fire service, and Police with details listed below.

- **Health** – 1,300 unvaccinated health workers have been stood down since the imposition of vaccine mandates. This compares to the more than 80,000 DHB workers who have been vaccinated. Of those stood down 463 are nurses and 67 are midwives. The DHB with the highest number of staff stood down was Waikato with 154, whilst 283 staff were stood down over Auckland's 3 DHBs.
- **Education** – On Mon 15 Nov, PM announced that the Ministry was most concerned about 11 schools. In each case, the Ministry worked through a specific solution with each school. Beyond that, the loss of the staff stood down for refusing the COVID-19 caused some issues in some schools, with some principals looking for further support to navigate the employment process, but overall the disruption was relatively contained, with no school being closed, and almost every school finding a suitable alternative.
- **Fire Service** – Fire and Emergency are currently planning for the impact of having unvaccinated personnel in response. Of the 13,500 staff 5.74% are unvaccinated and 6.81% have an unknown vaccination status. It should be noted however that this includes 11,500 volunteers and 2,000 paid staff. Most of the paid staff are now vaccinated these fire fighters attend 80% of all incidents. The Fire Service is operating a traffic light system to determine the impact of mandates. Stations labelled red will see a moderate impact, and those labelled black will potentially be out of service; both situations require contingency planning. There are currently 5 volunteer stations listed as black and 28 stations listed as red. The number of stations attended by the stations labelled black are relatively low.
- **Police** – As of 16 November 11% of sworn police staffers remained unvaccinated and 19.5% were yet to receive their second dose. 12.3% of non-sworn staffers were unvaccinated and 20.2% were yet to receive a second dose, although this may be higher as those who received the vaccine from somewhere other than a police provider are not obliged to pass on the information. There is currently no police-wide mandate however some police are captured in education, health, and MIQ worker mandates. Decision on police-wide mandates is yet to be formalised.

Stuff: 22 November 2021 1.27 PM (figures as of 17 November 2021), Fire and Emergency New Zealand 22 November 2021 5.47 PM, Ministry of Education 23 November 2021 11.56 AM, NZ Police 23 November 2021 12.59 PM

Next steps or mitigations if known: The Ministry of Education has been working with schools and kura to develop school-specific solutions. MOE will continue to work with schools to respond to challenges as they emerge. The fire service are developing contingency plans for black and red stations using guidance from Fire and Emergency management, with points to consider including backfilling, increased recruitment and increased training. The NZ Police are promoting internal health and wellbeing messaging that encourages staff to get vaccinated while policy and communications around a police-wide mandate are finalised.

Businesses Concerned About Enforcing COVID-19 Vaccination Passes Under Traffic Light System

There is reportedly particular confusion amongst businesses regarding how the new framework will be enforced, including the ability of venues to enforce proof of patron vaccination and verify vaccinations for those 12 and under, however it should be noted that no passes will be required for those under 12 years and 3 months. Implications of enforcement include the added costs extra staffing needed to verify vaccination certificates, particularly at large venues. Additionally, a Newshub-Reid research poll has found that two-thirds of Kiwis do not understand the forthcoming 'traffic light system', which may result in possible contention between patrons and businesses around requirements.

Stuff: 18 November 2021 5.00 AM, Stuff: 18 November 2021 4:27 PM, Newshub: 21 November 2021

Next steps and mitigations if known: More information will be available in the coming week in the lead up to the change from Alert Levels to the COVID-19 Protection Framework Guidance to various sectors is also being released over the coming week starting with Education and Business tomorrow (24/11).

Some People Experiencing Delays in Receiving My Vaccine Pass

Delays in receiving My Vaccine Pass have been reported by some people in New Zealand such as those who have been vaccinated in other countries, and those who reside in New Zealand with only overseas identity documentation. The process of recognising overseas vaccinations, adding them to New Zealand's COVID Immunisation Register (CIR) and being issued a domestic My Vaccine Pass that can be verified by local businesses is expected to take up to approximately two weeks. To obtain a My Vaccine Pass currently requires New Zealand or Australian identity documents, which some people do not have.

Stuff: 23 November 2021 5.00 AM, MOH COVID-19 Vaccinations: 22 November 2021 2.45 PM

COVID-19: Across Government Situation Report

23 November 2021

Key System Issues & Risks

Supply Chain Issues and Congestion at Ports Causing Business Issues

s9(2)(b)(ii), s9(2)(ba)(ii)

Although congestion at the Ports of Auckland (POAL) have stabilised from prior levels, the limited storage space at depots across Auckland continues to present a challenge. New import bookings from Asia have declined in recent weeks and it is unlikely that new consignments will reach New Zealand before Christmas. This may be due to importers having built up inventories for the holiday season earlier than usual to mitigate anticipated congestion, resulting in an earlier than usual import peak. This is supported by freight data which shows very strong import activity in recent months.

The Ministry of Transport, 22 November 2021, 12.35PM

- Next steps or mitigations: Retailers who previously relied on just-in-time delivery and were hit by disruptions around Christmas 2020, have brought in their holiday stocks early to hedge against anticipated congestion.

Lack of Access to MIQ is Limiting the Number of Experienced Workers in New Zealand

There have been media reports that overseas farm workers are finding it hard to book a place in the Managed Isolation and Quarantine booking system which is leading to a shortage in workers. The industry group Federated Farmers reported that New Zealand farm workers were having to work excessive hours in order to cover workloads, which cannot be covered by inexperienced workers. It was also noted that a significant amount of the work carried out on farms is seasonal with peak hours at certain times of the year.

RNZ 22 November 2021, 3.54 PM

Next steps or mitigations if known: One of MIQ's offline allocations, the Time-Sensitive Travel allocation (TST), is for workers undertaking time-sensitive tasks in specified areas of work that will have significant consequences for New Zealand. This includes the continued operation of supply chains of regional or national significance. A number of rural contractors have secured MIQ vouchers through the Time-Sensitive Travel allocation (TST), when they have not been able to secure a voucher on MIAS. Examples of other industries who commonly apply through TST include diplomats, MFAT personnel, NZDF personnel, construction workers, art and culture sector workers and exporters.

Crime Rates in Auckland Region Likely to Increase to Pre-Lockdown Levels

As restrictions are eased across the Auckland region in the coming weeks, criminal activity is likely to increase to pre-lockdown levels. Evidence from the Alert Level 4 lockdown in early 2020 showed a significant decrease in almost all types of criminal activity across New Zealand. Victimisation data from the New Zealand Police indicates a similar trend in crime rates across the August 2021 lockdowns. Data from September 2021 showed an increase in criminal activity across regions that reduced restrictions, while Auckland's rates remained consistently low as Alert Level 4 continued.

NZ Police Data 2021, Stuff: 23 April 2020 1.43 PM

Next steps and mitigations if known: Public crime prevention messaging and reassurance patrols.

COVID-19: Across Government Situation Report

23 November 2021

Health

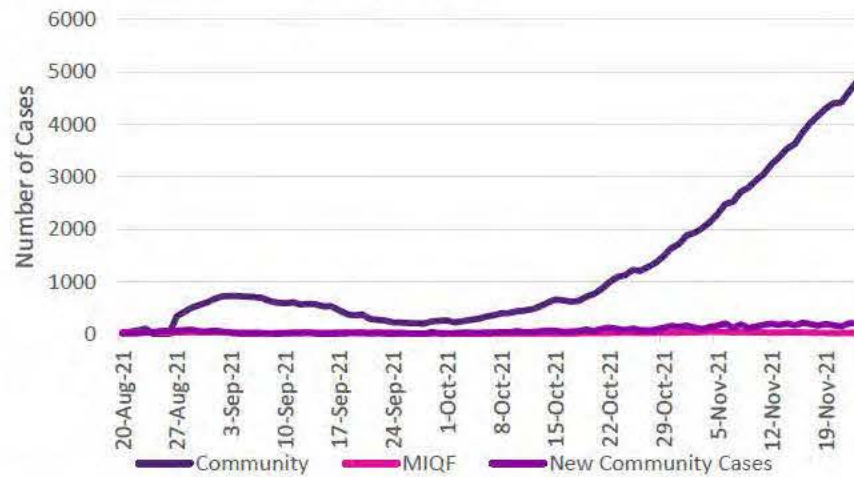
Active COVID-19 Cases Increasing

The number of active COVID-19 community cases has increased to 4,801 on 23 November 2021, the highest level since the start of the outbreak.

The rolling 7-day average is 186 cases per day compared to 187 per day on average in the previous week (10 November – 16 November).

Ministry of Health: 23 November 2021 2.06 PM

Active COVID-19 Cases in Community and MIQF



Vaccination Amongst Those Infected Since August

44% of those infected with COVID-19 since August to present have been unvaccinated, with a further 22% ineligible for vaccination as they are under 12 years of age. 73% of those hospitalised were unvaccinated or ineligible, and 20% had received just one dose of the vaccine. Only 5% of those hospitalised were fully vaccinated at least 14 days prior to the infection.

Ministry of Health: 23 November 2021 2.46 PM

Health System

There has been an average of 82 people in hospital over the last week (down from 88 the week before), 6 cases in ICU (down from 9 in the previous week), and 2 on ventilators (down from 4 in the previous week). Currently the only patients in ICU are in the Auckland area. In total there have been 14 deaths associated with this outbreak.

Ministry of Health: 23 November 2021 2.06 PM

ICU Beds and Ventilators

There is ICU capacity available at all DHBs, with lowest capacity in Canterbury, South Canterbury and Hawkes Bay. There is ventilator availability across all DHBs except Wairarapa. Available capacity at Auckland DHB is approximately 10 ICU beds and over 50 ventilators. Waikato DHB has approximately 15 ICU beds and under 30 ventilators available.

Ministry of Health: 16 November 2021 2.19 PM

PPE

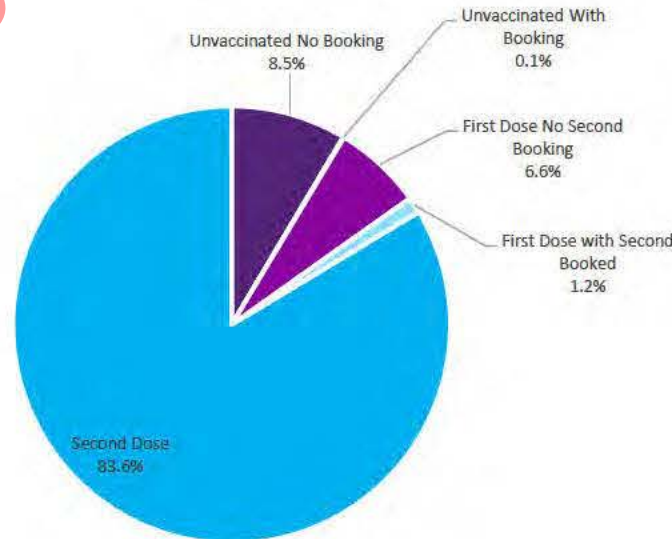
The current PPE usage rate is at low pandemic usage rates. There is currently eight weeks of PPE supply at high pandemic response usage rates, and 32 weeks at medium pandemic response usage rates.

Ministry of Health: 23 November 2021 2.29 PM

Total Vaccinations and Bookings

There have been 3,846,920 first doses of vaccine administered and 3,519,996 people have now been fully vaccinated. There are 53,111 future bookings, with 2,940 for first dose and 50,171 for second dose. This means approximately 91% of the eligible population have had a vaccination or made a booking to be vaccinated. Approximately 9% of the eligible population have not received at least a first dose and do not have a booking.

Ministry of Health: 23 November 2021 10.38 AM

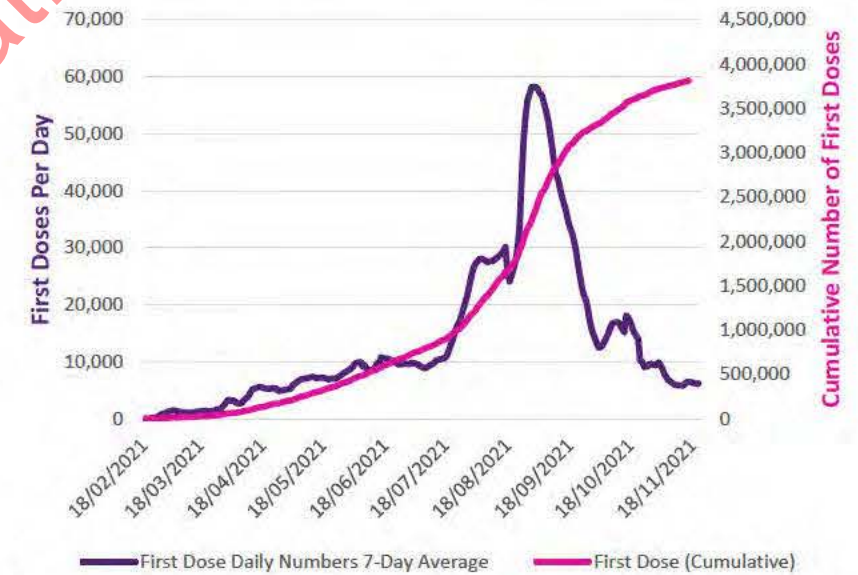


Vaccinations By First Dose

The number of people getting their first COVID-19 vaccination has slowed to between 5,825 and 6,489 over the last 2 weeks. This compares to a range of 6,554 and 9,918 over the previous two weeks, and a peak of 58,227 first doses observed on 1 September 2021, shortly after the outbreak.

DPMC: 18 November 2021 5.47 PM

First Dose Vaccine Numbers, Daily and Cumulative

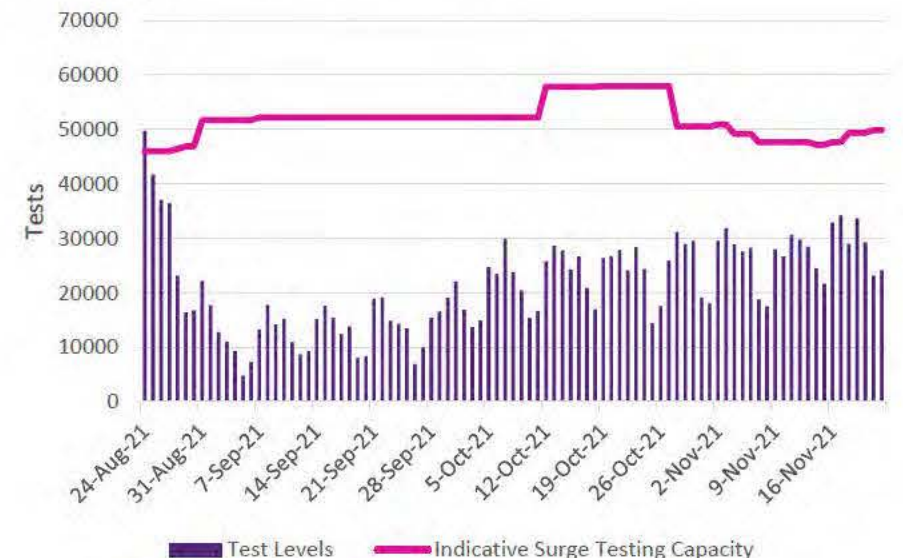


Testing Levels

Testing levels remain below the peak of 49,745 on 24 August, at 24,198 on 22 November. The 7-day rolling average was 29,472, compared to 27,072 for the previous week, suggesting testing levels have slightly increased over the last week.

Ministry of Health: 23 November 2021 10.38 AM

Testing Capacity vs Tests Administered



COVID-19: Across Government Situation Report

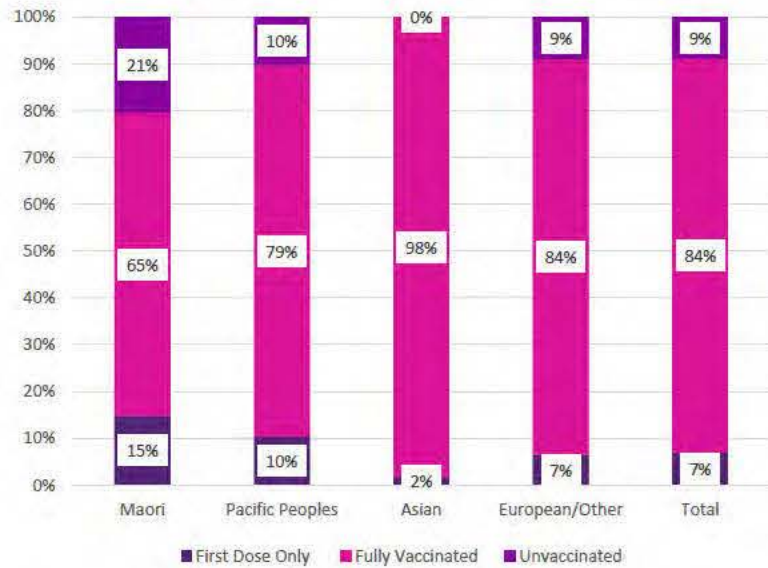
23 November 2021

Health

Vaccination Rate by Ethnicity

Vaccination rates amongst Māori and Pacific Peoples remain below that of Asian and European ethnic groups. Young Māori continue to be the least vaccinated demographic.

Ministry of Health: 23 November 2021 10.38 AM



Themes of Calls to Healthline and '1737 Need to Talk?'

On average there were 8,489 calls to Healthline each day in the last week, up slightly from 6,847 over the previous week. On average 18% were sent for testing.

Call volumes over the last two days increased from the Bay of Plenty and Hawkes Bay DHB regions after new cases were announced. There were a number of calls relating to the planned Auckland boundary change in December. The Mental Health and Addiction service demand increased over the last four days with growing contacts via SMS.

Ministry of Health: 23 November 2021 2.06 PM

Social & Community

Protest Activity

On 16 November some nurses, teachers and others opposed to vaccine mandates protested across several regions including:

- 100 protestors outside Hawkes Bay Hospital with 40 protesters marching towards Tukituki MP Anna Lorck's office in Hastings.
- Protesters in Tauranga caused traffic disruptions at the marina in support of nurses.
- 20-30 protestors met in Auckland with chants and signs saying "sayno2mandates".
- 100 protestors gathered outside Whangarei Hospital with placards and marched towards the town centre.
- Over 100 protestors met outside New Plymouth District court with some giving speeches. Some protestors went on to bang on the windows of the office of MP Glen Bennett with others banging on vehicles as they tried to turn into Taranaki Base Hospital.

NZ Police 18 November 2021, 3.13 PM

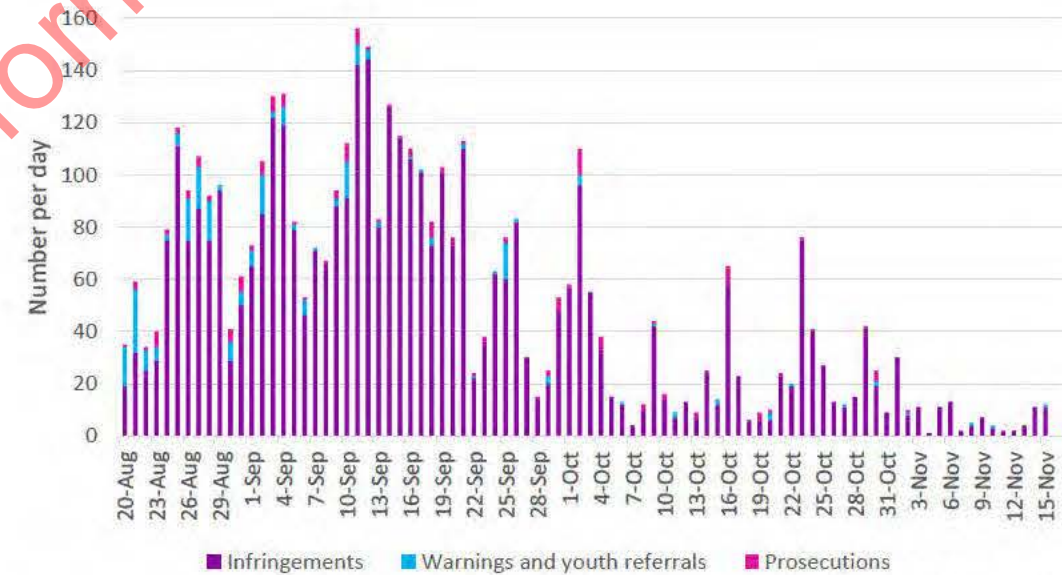
Infringements, Prosecutions, and Warnings – Low and Falling

The number of infringements continues to drop since Auckland shifted from AL4 to AL3, with the lowest number of infringements in the last week, since the outbreak began. Infringements over the 7 days to 17 November totaled 32, compared to 41 in the 7 days prior. Prosecutions and warnings and youth referrals also remained relatively low, at 1 and 2 respectively.

New Zealand Police: 19 November 2021, 12.32 PM

Note: As of 23.59 PM on 21 September, Auckland moved from AL4 to AL3.

Infringements, Warnings and Prosecutions under AL3 and AL4 – Auckland



Note: Infringements include non-essential travel, failure to physically distance, wear a mask in premises or on public transport, comply with Orders or the Health Act, close premises, display a QR code, and organising a gathering outdoors.

Public Sentiment

Analysis of the online public conversation during 13 November –17 November showed more negative sentiment in all categories of conversation related to aspects of COVID-19. Conversations around the vaccine rollout saw the largest volume increase, up 29%.

It was noted in the conversation around the My Vaccine Pass launched this week, that the majority expressed negative sentiment, at 34%. Some discussed issues around downloading vaccine passes due to the system overloading, with others noting incorrect information on passes. There was also discussion around migrants and those with no New Zealand identification documents not being able to receive a pass.

DPMC: 18 November 2021 5.47 PM

COVID-19: Across Government Situation Report

23 November 2021

Key Contacts

Purpose	Agency	Contact
Queries from Elected Officials	DPMC	electedofficials@dpmc.govt.nz s9(2)(a)
Business Queries	MBIE	AL4BusinessServices@mbie.govt.nz 0800 424 946
COVID-19 Health Advice	Healthline	0800 358 5453
To Report a Breach	Police	COVID-19 compliance Unite against COVID-19 (covid19.govt.nz)
Information/Apply for Wage Subsidy	MSD	https://www.workandincome.govt.nz/covid-19/wage-subsidy/index.html
Resurgence Payment Support	IRD	https://www.ird.govt.nz/covid-19/business-and-organisations/resurgence-support-payment
Exemption requests for Alert Level 4 measures <i>Note that if you have a general enquiry where someone is simply asking whether or not something is permitted and you are able to respond based on the Order, you can do so. If you are unclear at all, please forward to this new email.</i>	MoH	https://www.health.govt.nz/our-work/diseases-and-conditions/covid-19-novel-coronavirus/covid-19-health-advice-public/covid-19-travel-within-new-zealand
This report is produced by the Insights and Reporting Team in DPMC's COVID-19 Group. If you have any questions, concerns, or feedback, please do not hesitate to contact us.		COVID-19insights@dpmc.govt.nz

COVID-19: Across Government Situation Report

30 November 2021

Key System Issues & Risks

COVID-19 Cases Increase, Growth Rate Slows

The number of active COVID-19 cases continues to increase, however the growth rate is beginning to slow, although it is expected to increase again in the future. The R Value in October was typically between 1.2 – 1.3, falling to a range of 1.1 – 1.2 over the first weeks of November and is estimated to have been between 1.0 – 1.1 over the last couple of weeks, however more recent estimates carry a wider range of uncertainty. The growth rate is likely to increase as restrictions ease moving into the COVID Protection Framework (CPF). There are currently 5,834 active COVID-19 cases, the highest since the start of the pandemic. The 7-day rolling average number of cases is currently at 167, which shows a decrease of 18 cases from peak levels last week. There are current active cases in 14 of the 20 DHBs in New Zealand. There are active cases in 12 DHBs in the North Island including Northland, Auckland, Counties Manukau, Waitemata, Hawke's Bay, Waikato, Bay of Plenty, Lakes, Taranaki, MidCentral, Wairarapa and Capital and Coast. There are active cases across 2 DHBs in the South Island, including Canterbury and Nelson Marlborough.

Ministry of Health: 30 November 2021 1.42 PM; Our World in Data, 10 November 2021

- Next steps or mitigations if known: The COVID-19 Protection Framework will facilitate the application of public health measures alongside the COVID-19 vaccination rollout.

First Dose Vaccinations Plateauing

Overall COVID-19 vaccination rates appear to be plateauing (see the chart later in this report). It was noted that there was a significant increase in first dose booking over the last 7-days from 2,940 on 22 November to 47,828 on 29 November. This may be due to a wind down of some walk-in clinics. 94% of the eligible population have had a COVID-19 vaccine or are booked to receive it. If all current bookings are fulfilled a minimum of 87% of the eligible population will be fully vaccinated, 7% will have had one dose, and 6% will remain unvaccinated. Vaccination levels amongst Māori and Pasifika communities are 82% and 91% respectively for the first dose, compared to 92% across the total eligible population.

Ministry of Health: 30 November 2021 1.28 PM

- Next steps or mitigations if known: There are various strategies or approaches to increase vaccination rates currently being implemented across the country.

Capacity to Treat Large Numbers of Severe COVID-19 Cases Constrained

Whilst ICU capacity can currently meet demand, ICU availability is limited in most regions and is likely to be an issue with cases increasing. ICU capacity is available in all DHBs except in Whanganui, where all ICU beds are being used for non-COVID patients. ICU capacity remains very low across Canterbury, South Canterbury, West Coast, Southern and Wairarapa. Ventilator capacity remains available across all DHB's.

Ministry of Health: 30 November 2021 1.42 PM

- Next steps or mitigations if known: The Health Minister indicated that there is capacity to surge up to 550 ICU or High Dependency Unit beds, however, this will impact some planned operations. In a separate announcement the Minister also noted that about 14,000 extra nurses had been trained to work in Intensive Care.

MIQ Capacity Limited

There are currently operating three quarantine facilities in Auckland. As of 9:00 AM, 29 of November, there were 325 (48%) quarantine rooms available out of 674. Over the last week, case numbers in Auckland were relatively similar to the week before however, overall, there were less referrals from ARPHS. There are still several positive cases self-isolating who are supported by community care. The Naumi in Auckland is still being used for a small number of Community Close Contacts, where home self-isolation is not possible. There are currently 28 rooms available for this group. There remains a small number of quarantine rooms currently available in Christchurch and Wellington maintained for positive border returnees and community cases (61 and 12 rooms respectively). There are 61 (55%) MIQ quarantine rooms unoccupied out of the 110 available at Amohia in the Waikato region.

MBIE: 30 November 2021, 11.09 AM

- Next steps or mitigations if known: MBIE will continue to explore options should quarantine capacity be reached across the regions as well as considering the impact that the new variant may have on our facilities.

Omicron Variant A Risk

The new Omicron variant poses a potential risk, particularly given that little is currently known with regards to its transmissibility and the severity of illness that it causes. The recently discovered Omicron variant, first detected in South Africa, has led to a significant increase in anxiety expressed publicly online, particularly given New Zealand's upcoming move to reduce restrictions and suppress COVID-19 circulating in the community. Some have expressed the belief this will lead to further lock-downs, or impact the current re-opening plan. There have also been calls by some to keep the border closed following the discovery of five Omicron variant cases in Sydney.

Newshub: 27 November 2021, DPMC: 29 November 2021 10.31 AM; RNZ: 29 November 2021 8.26 PM

- Next steps or mitigations if known: Travel restrictions have been put in place for high-risk countries.

Key System Issues & Risks

COVID-19 Contact Tracing Pressures

There are concerns noted in the media that there may not be sufficient surge capacity in the COVID-19 contact tracing system to meet the demands of higher case numbers. As well as growing case numbers, the complexity of tracing contacts has increased given the communities that have been affected.

Ministry of Health : 30 November 2021, 1.43 PM

Next steps and mitigations if known: Work is ongoing to prepare for meeting demand.

Confusion around the CPF Traffic Light System

There remains some confusion amongst some members of the public regarding the new CPF traffic light system. Monitoring of public social media noted an increase in requests for information regarding how specific activities will be affected under the new CPF system such as weekend sporting events and retail. There were also some complaints that no regions will begin the system in Green, and comments that since vaccinated and unvaccinated people can catch and transmit COVID-19 that the system appears pointless. There were also reports that some people are unable to differentiate between the rules in Red and Orange.

DPMC: 29 November 2021, 10.31 AM

Next steps and mitigations if known: Communications are ongoing regarding the change from Alert Levels to the COVID-19 Protection Framework Guidance with specific advice to various sectors also having been released.

Limited Number of Vaccine Pass Downloads

It is possible that some New Zealanders will not have a digital vaccination pass for the transition to the CPF on 3 December 2021, with approximately one third of vaccinated New Zealanders yet to download the pass. Of the 3.59 million fully vaccinated people in New Zealand, only 2.36 million have downloaded My Vaccine Pass as of 28 November 2021 with approximately 1.23 million fully vaccinated New Zealanders yet to download their vaccination pass.

MOH COVID-19 Vaccinations 29 November 2021 10.43 AM

Next steps and mitigations if known: Vaccine passes can be requested over the phone and help in obtaining a vaccine pass is offered at a number of participating pharmacies.

Risks Around Self Isolating At Home With COVID-19

Open-source reporting has raised concern regarding the ability for some individuals self-isolating at home to self-monitor serious symptoms, as well as possible issues in receiving timely health advice, particularly for Māori and Pasifika communities. Pulse oximeters, which is a key tool to measure oxygen saturation in the blood to indicate serious disease caused by COVID-19, have been providing inaccurate readings. The report suggests that the device provides less accurate information on those with darker toned skin, often overstating the oxygen saturation levels in their blood. This indicates that people may be less likely to receive necessary hospital care and oxygen machines. Other reports have indicated that an independent review around two self-isolation deaths were 'potentially preventable', with missed opportunities around following up on those self-isolating alone, and reducing the time between a positive diagnosis and a clinical COVID-19 risk assessment for those in CIQ.

NZ Herald: 29 November 2021 9.01 AM, The Spinoff: 26 November 2021.

Next steps and mitigations if known: \$1.5 billion in funding has been approved for a new 'care in the community' model for COVID-19 patients, which will include ongoing clinical monitoring. The model also includes a more thorough assessment of individual welfare needs and wellbeing, particularly for Māori and Pasifika as well as those isolating alone.

Locally Established Border Controls Beyond the CPF

Some Iwi have expressed intentions to set up local border controls in addition to the CPF as a way to protect their community in regions with low vaccination rates and limited ICU infrastructure particularly in popular summer destinations.

NZ Herald: 30 November 2021 2.06 PM

Next steps and mitigations if known: Conversations are ongoing regarding the way forward.

COVID-19: Across Government Situation Report

30 November 2021

Key System Issues & Risks

Abuse Directed at Frontline Workers

Encounters between customer facing public transport staff and the public have shifted recently, with increasing reports of incidents involving members of the public upset with vaccine mandates, mask wearing requirements, and travel restrictions. This may pose a risk to the safety of staff. Incidents have been reported s9(2)(ba)(ii) and by KiwiRail in relation to the Interislander Ferry. Workers in other sectors have also reported receiving abuse, for example a soldier working at an MIQ facility was allegedly spat at by a COVID-19 positive guest recently.

NZTA: 26 November 2021, 10.44 AM, Stuff 30 November 2021, 4:30 PM

Next steps and mitigations if known: s9(2)(ba)(ii)

Vaccine Pass Forgery Concerns

Concerns have been raised by some that the design of the vaccine pass may leave it open to fraud. Of particular concern is the fact that the pass verifier remains an optional component of the processes, meaning that businesses are not mandated to scan vaccine passes to ensure their authenticity. Other concerns include the lack of a photograph on the vaccine pass and that people could use someone else's vaccine pass.

1 News: 29 November 2021, 1.41 PM

Next Steps and mitigations: Requirements to check all or a proportion of all passes, and the application of fines for fraudulent use of passes remains under consideration.

Prevalence of COVID-19 Amongst Returnees Still Higher Than the General Population But Actual Numbers Less Than New Cases Within New Zealand

Recent case numbers in the population have been significantly higher than amongst returnees in recent weeks, however proportionally prevalence of COVID-19 amongst returnees remains much higher than in the New Zealand population. Over the 7 days to 2 November 2021, there was a 7-day rolling average of approximately 3 cases, amongst arrivals to New Zealand currently in MIQ, which equates to approximately 8.9 daily cases per 1,000 arrivals. Over the same period there was a 7-day rolling average of approximately 186 daily cases in the community, which equates to approximately 0.04 daily cases per 1,000 population. This suggests a much higher prevalence of COVID-19 amongst arrivals than in the general New Zealand population.

Ministry of Health: 22 November 2021, 1.29 PM, MBIE: 25 November 2021 11.40 AM

- Next steps or mitigations if known: The government continues to assess options for new arrivals, such as MIQ and home isolation.

Vaccine Pass Access Difficulties

There are several groups facing access issues in relation to My Vaccine Pass, including transgender and non-binary groups, those without local documentation, and those vaccinated overseas. There is concern that transgender and non-binary New Zealanders may be at risk of discrimination through deadnaming (use of the birth or former name of a transgender or non-binary person) on vaccine passes, making the passes less accessible to these communities. Personal details on the vaccine pass come directly from a person's national health index (NHI) number, which are linked to birth certificates. This is potentially an issue for those who have not legally changed their names, with data from a 2019 study indicating that 5 out of 6 transgender and non-binary participants have not legally changed details on their birth certificate. There is a risk that vaccine pass may not match existing identification, opening the possibility of outing themselves, and/or making them targets for discrimination at public venues.

Delays in receiving My Vaccine Pass have also been reported by some people in New Zealand who have been vaccinated in other countries, and by those who reside in New Zealand with only overseas identity documentation in the lead up to the new Framework. The process of recognising overseas vaccinations, adding them to New Zealand's COVID Immunisation Register (CIR) and being issued a domestic My Vaccine Pass that can be verified by local businesses is expected to take up to two weeks. For those who received the vaccine locally, the only way to get a My Vaccine Pass is through provision of NZ or Australian identity documents.

STUFF: 22 November 2021 2.35 PM; Stuff: 23 November 2021 5.00 AM, MOH COVID-19 Vaccinations: 22 November 2021 2.45 PM

Next steps and mitigations if known: Those that cannot download My Vaccine Pass due to overseas identification can call the MOH 0800 line to verify documents. This week, MOH are also working on implementing an in-person channel at selected pharmacies to verify overseas identification.

MOH is currently exploring how to securely implement a digital self-service process to link international proofs of vaccination with CIR.

COVID-19: Across Government Situation Report

30 November 2021

Health

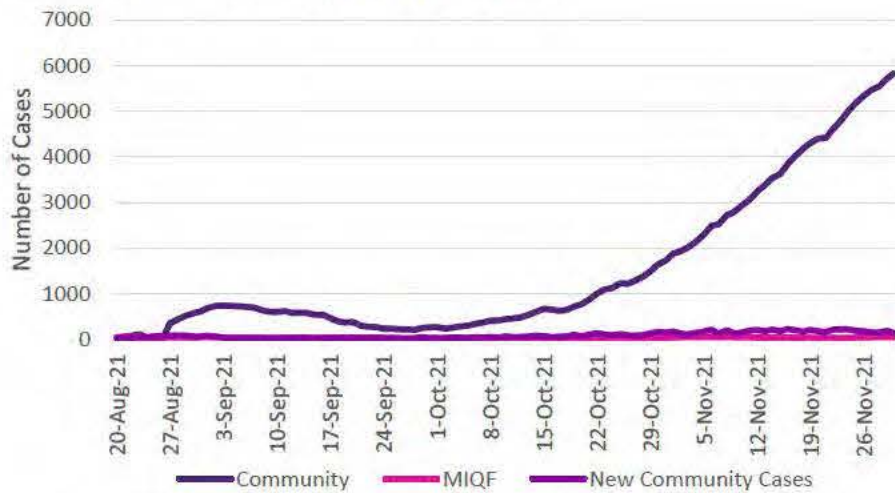
Active COVID-19 Cases Increasing

The number of active COVID-19 community cases has increased to 5,834 on 30 November 2021, the highest level since the start of the outbreak.

The rolling 7-day average has decreased to 167 cases per day compared to 185 per day on average in the previous week (17 November – 23 November).

Ministry of Health: 30 November 2021 1.42 PM

Active COVID-19 Cases in Community and MIQF



Vaccination Amongst Those Infected Since August

42% of those infected with COVID-19 since August to present have been unvaccinated, with a further 24% ineligible for vaccination as they are under 12 years of age. 73% of those hospitalised were unvaccinated or ineligible, and 21% had received just one dose of the vaccine. Only 6% of those hospitalised were fully vaccinated at least 7 days prior to the infection.

Ministry of Health: 30 November 2021 2.27 PM

Health System

There has been an average of 83 people in hospital over the last week (up from 82 the week before), 9 cases in ICU (up from 6 in the previous week), and 1 on a ventilator (down from 2 in the previous week). Currently there are patients in ICU in the Auckland and Waikato areas. In total there have been 14 deaths associated with this outbreak.

Ministry of Health: 30 November 2021 1.43 PM

ICU Beds and Ventilators

There is ICU capacity available at all DHBs, except for Whanganui where all ICU beds are currently being used for non-COVID patients. There is ventilator availability across all DHBs. Available capacity at Auckland DHB is less than 5 ICU beds and over 50 ventilators. Waikato DHB has less than 15 ICU beds and approximately 30 ventilators available.

Ministry of Health: 30 November 2021 1.43 PM

PPE

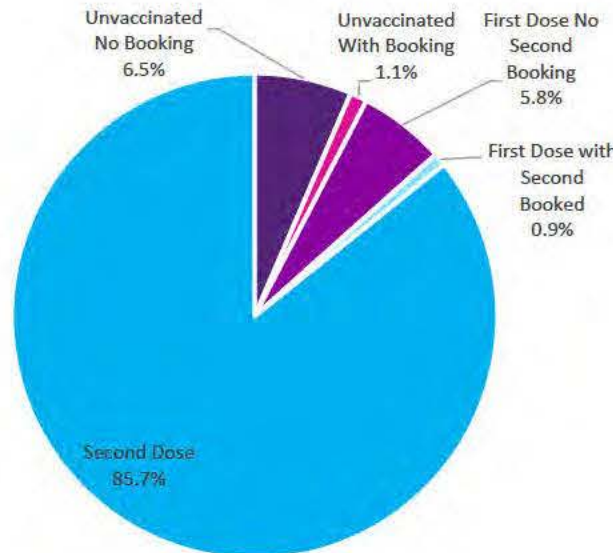
The current PPE usage rate is at low pandemic usage rates. There is currently eight weeks of PPE supply at high pandemic response usage rates, and 32 weeks at medium pandemic response usage rates.

Ministry of Health: 30 November 2021 1.12 PM

Total Vaccinations and Bookings

There have been 3,888,804 first doses of vaccine administered and 3,604,193 people have now been fully vaccinated. There are 84,060 future bookings, with 47,828 for first dose and 36,232 for second dose. This means approximately 94% of the eligible population have had a vaccination or made a booking to be vaccinated. Approximately 6% of the eligible population have not received at least a first dose and do not have a booking.

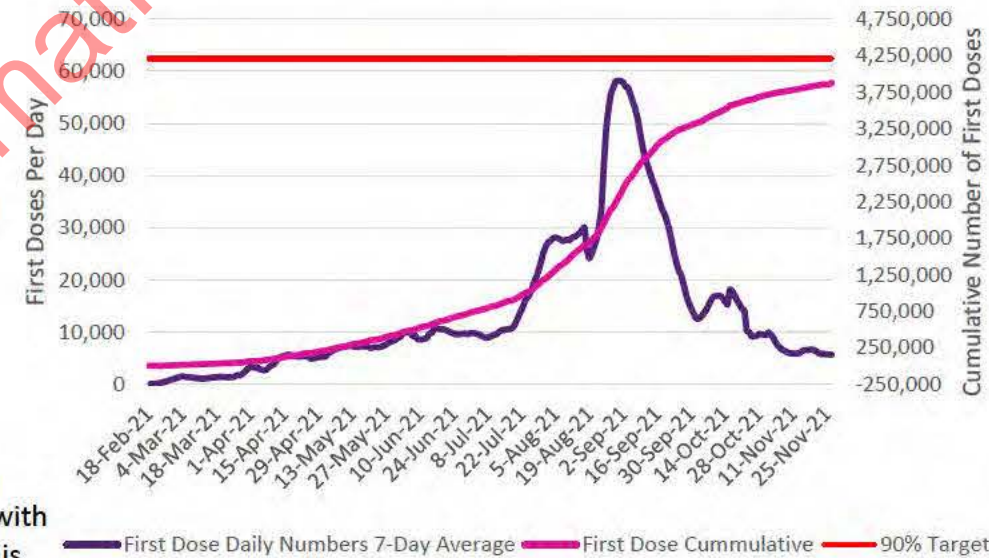
Ministry of Health: 30 November 2021 1.28 PM



Vaccinations By First Dose

The number of people getting their first COVID-19 vaccination daily ranged between 5,632 and 6,622 over the past 14 days. This compares to a range of 5,825 and 9,918 over the previous two weeks, and a peak of 58,227 first doses observed on 1 September 2021, shortly after the outbreak.

Ministry of Health: 30 November 2021 1.28 PM



Testing Levels

Testing levels remain below the peak of 49,745 on 24 August, at 19,362 on 29 November. The 7-day rolling average was 28,269, compared to 29,472 for the previous week, suggesting testing levels have slightly increased over the last week.

Ministry of Health: 30 November 2021 9.03 AM

Testing Capacity vs Tests Administered



COVID-19: Across Government Situation Report

30 November 2021

Health

Vaccination Rate by Ethnicity

Vaccination rates amongst Māori and Pacific Peoples remain below that of Asian and European ethnic groups. Young Māori continue to be the least vaccinated demographic.

Ministry of Health: 30 November 2021 1.28 PM



Themes of Calls to Healthline and '1737 Need to Talk?'

On average there were 9,119 calls to Healthline each day in the last week, up slightly from 8,489 over the previous week. On average 15% were sent for testing.

Call volumes increased yesterday after the Prime Minister's 4PM announcement with the majority of them calls related to the new CPF traffic light rules, both for individuals and businesses. The biggest increase in call volumes came from Hawkes Bay, Capital & Coast and Nelson Marlborough DHBs. An increase in calls relating to the new Omicron variant has also occurred.

Ministry of Health: 20 November 2021 1.43 PM

Social & Community

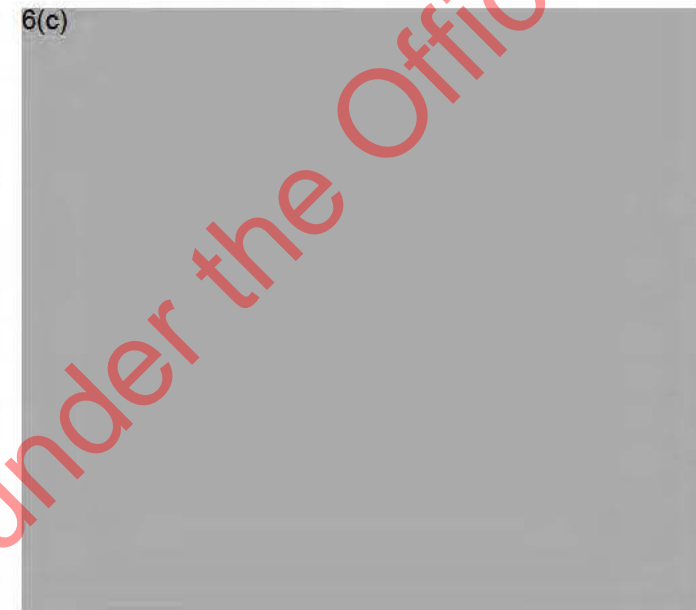
Protest Activity

On 30 November, a group of approximately 60 anti-vaccine mandate protesters gathered in Hamilton ahead of one of the Prime Ministers planned visits across the Waikato.

NZ Herald: 30 November 2021 12.15 PM

Vaccination events in Taranaki have been shifted indoors or cancelled as health staff come under threat of verbal and physical abuse from anti-vaccine groups. Vaccinations in campervans have been cancelled after instances of those opposed to the vaccine luring health staff into the vans under the guise of wishing to be vaccinated and accosting them once inside. Police are now being warned in advanced of vaccination events in the area to promote staff safety.

RNZ: 30 November 2021 10.07 AM



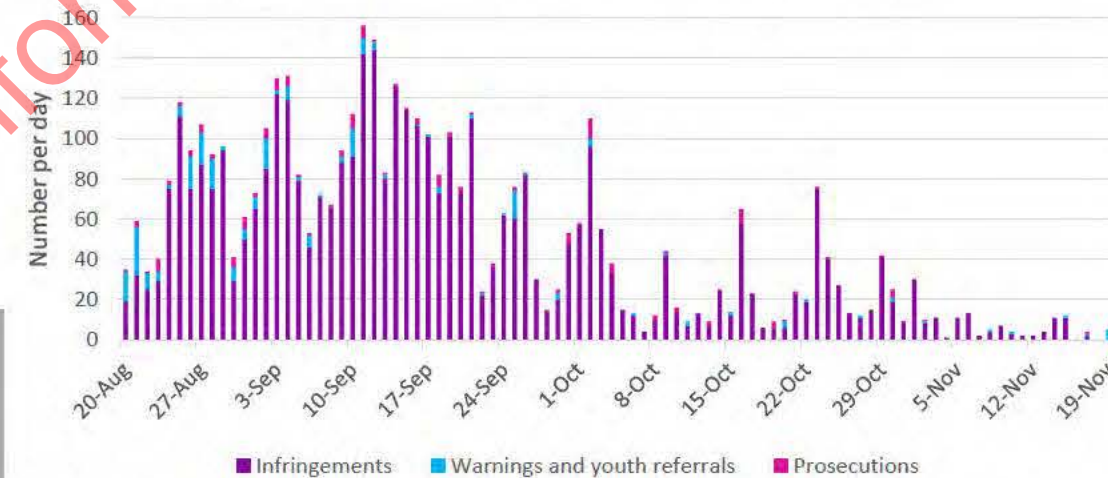
Infringements and Prosecutions Low and Falling

Prosecutions and infringements continue to decrease since Auckland shifted from AL4 to AL3, with the lowest number of infringements in the last week, since the outbreak began. Infringements over the 7 days to 19 November totaled 28, compared to 33 in the 7 days prior. Warnings and youth referrals increased slightly to 7 from 2 the week prior, while prosecutions continue to decrease and remain low at 1.

New Zealand Police: 26 November 2021, 12.43 PM

Note: As of 23.59 PM on 21 September, Auckland moved from AL4 to AL3.

Infringements, Warnings and Prosecutions under AL3 and AL4 – Auckland



Note: Infringements include non-essential travel, failure to physically distance, wear a mask in premises or on public transport, comply with Orders or the Health Act, close premises, display a QR code, and organising a gathering outdoors.

Public Sentiment

Preliminary social media analysis indicates a growing anxiety around the recently discovered COVID-19 Omicron variant, and what implications it will have on New Zealand's re-opening plan. Social media analysis also indicates a slight increase in negative public sentiment towards the time frame of the government border reopening plan. Analysis of the online public conversation during 23 November – 25 November showed an increase in conversation volume across all categories, with the largest increase 56% in the COVID Response Category. Sentiment across all categories remained either stable or slightly negative, particularly around the COVID Response and Timeframe categories. A considerable amount of public online conversation followed the announcement of the time-line to reopen New Zealand's border. While some expressed excitement about options and opportunities to travel, there was considerable negative sentiment around the re-opening plan. Many feel the reopening plan is too slow and conservative, given the prevalence of COVID-19 in the community.

DPMC: 29 November 2021 10.31 AM; DPMC: 26 November 2021 5.59 PM

COVID-19: Across Government Situation Report

30 November 2021

Key Contacts

Purpose	Agency	Contact
Queries from Elected Officials	DPMC	electedofficials@dpmc.govt.nz s9(2)(a)
Business Queries	MBIE	AL4BusinessServices@mbie.govt.nz 0800 424 946
COVID-19 Health Advice	Healthline	0800 358 5453
To Report a Breach	Police	COVID-19 compliance Unite against COVID-19 (covid19.govt.nz)
Information/Apply for Wage Subsidy	MSD	https://www.workandincome.govt.nz/covid-19/wage-subsidy/index.html
Resurgence Payment Support	IRD	https://www.ird.govt.nz/covid-19/business-and-organisations/resurgence-support-payment
Exemption requests for Alert Level 4 measures <i>Note that if you have a general enquiry where someone is simply asking whether or not something is permitted and you are able to respond based on the Order, you can do so. If you are unclear at all, please forward to this new email.</i>	MoH	https://www.health.govt.nz/our-work/diseases-and-conditions/covid-19-novel-coronavirus/covid-19-health-advice-public/covid-19-travel-within-new-zealand
This report is produced by the Insights and Reporting Team in DPMC's COVID-19 Group. If you have any questions, concerns, or feedback, please do not hesitate to contact us.		COVID-19insights@dpmc.govt.nz

Key System Issues & Risks

COVID-19 Cases Plateauing, Growth Rate Likely to Increase

The number of active COVID-19 cases continues to increase, however the growth rate is beginning to slow, although it is expected to increase again in the future. The R Value is estimated to have been between 1.0 – 1.1 in the second half of November, reaching 0.99 on 1 December. More recent estimates carry a wider range of uncertainty. The growth rate is likely to increase as restrictions ease moving into the COVID Protection Framework (CPF). There are currently 6,374 active COVID-19 cases, the highest since the start of the pandemic. The 7-day rolling average number of cases is currently at 121, down from 167 over the previous week. There are currently active cases in 14 DHBs, including Auckland, Bay of Plenty, Counties Manukau, Hawkes Bay, Lakes, MidCentral, Nelson Marlborough, Northland, Southern, Taranaki, Waikato, Waitemata, and Whanganui.

Ministry of Health: 7 December 2021 1:38 PM; Our World in Data, 7 December 2021

- Next steps or mitigations if known: The COVID-19 Protection Framework will facilitate the application of public health measures alongside the COVID-19 vaccination rollout.

Lengthening PCR Testing Turnaround Times

Concerns regarding PCR testing capacity and turn around times have been raised in the media by some businesses, after it was reported that a third of all COVID-19 tests were taking longer than 24 hours to process, not including the time taken to transport samples to the lab or to notify the patient. As of 3 December the 7-day average proportion of tests processed within 24 hours is 69.9%. This could be an issue as businesses look to reopen, whilst trying to minimise transmission to staff. An example of an organisation facing this issue is Napier Port, where workers are required to be vaccinated and take regular tests. They have decided to set up saliva testing at the port, over concerns around government testing capacity, and concerns that rapid antigen testing is too inaccurate for that purpose.

Stuff: 6 December 2021, 2:00 PM, Ministry of Health: 6 December 2021 4:26 PM

- Next steps or mitigations if known:

Capacity to Treat Large Numbers of Severe COVID-19 Cases Constrained

Whilst ICU capacity can currently meet demand, ICU availability is limited in most regions particularly in Whanganui and Hawkes Bay, where there are approximately 2 beds available in each DHB. This issue is likely to increase as COVID-19 cases grow outside of the Auckland and Waikato areas. ICU capacity also remains low across Wairarapa, Canterbury, West Coast, Lakes, and Nelson Marlborough DHBs. Ventilator capacity remains available across all DHB's. Staffing across DHBs is limited, with reports of ICU beds going unused due to nursing shortages in some places, including Dunedin. A November 2021 study from the New Zealand Medical Journal estimated that the surge capacity for COVID-19 cases is likely to yield only 67 additional ICU beds, constrained by a lack of nursing staff.

Ministry of Health: 7 December 2021 1:34 PM; New Zealand Medical Journal: 12 November 2021; NZ Herald: 6 December 2021 6:22 AM

- Next steps or mitigations if known: The Health Minister indicated that there is capacity to surge up to 550 ICU or High Dependency Unit beds, however, this will impact some planned operations. In a separate announcement the Minister also noted that about 14,000 extra nurses had been trained to work in Intensive Care.

MIQ Capacity Limited

There are currently three operational quarantine facilities in Auckland. As of 9:00 AM, 6 November, there were 389 quarantine rooms available out of 674 (57%). Over the last week, case numbers in Auckland were relatively similar to the week before however, overall, there were less referrals from ARPHS. There are still several positive cases self-isolating who are supported by community care. The Naumi in Auckland is still being used for a small number of Community Close Contacts, where home self-isolation is not possible. There are currently 32 rooms available for this group. There remains a small number of quarantine rooms currently available in Christchurch and Wellington maintained for positive border returnees and community cases (60 and 10 rooms respectively). There are 62 MIQ quarantine rooms unoccupied out of the 110 available at Amohia in the Waikato region (56%).

MBIE: 30 November 2021, 11:09 AM

- Next steps or mitigations if known: MBIE continues to explore options should quarantine capacity be reached across the regions as well as considering the impact that the new variant may have on their facilities.

Omicron Likely to Arrive in New Zealand MIQ

There is an increasing likelihood that the Omicron COVID-19 variant will arrive at MIQ in New Zealand over the next few weeks, as the new strain continues to grow overseas. The Omicron variant has spread to over 38 countries, with confirmed community transmission in Australia, and two cases in MIQ in Fiji. The variant poses a potential risk, particularly given that little is currently known with regards to its transmissibility and the severity of illness that it causes.

CNBC: 3 December 2021 1:19 AM; RNZ: 4 December 2021 9:11 PM; RNZ: 7 December 2021 1:16 PM

- Next steps or mitigations if known: Travel restrictions have been put in place around high-risk countries in Southern Africa, where the variant was first identified.

COVID-19: Across Government Situation Report

7 December 2021

Key System Issues & Risks

COVID-19 Contact Tracing Capability In Demand

According to Ministry of Health data, in the week between 27 November and 3 December, approximately 45% of close contacts of community cases were reached within 48 hours. However, it should be noted that this is likely to be an under-reporting of performance as Auckland household contacts are being managed as part of the community self-isolation service, CSIQ, commissioned by the Northern Regional Health Coordination Centre, NRHCC, and therefore not included in the National Contact Tracing Solution system, NCTS.

Ministry of Health: 6 December 2021 4.26 PM

- Next steps or mitigations if known: Additional capacity has been stood up within an existing telehealth provider (Reach Aotearoa) to increase the system's capacity for case investigation. This service went live on 17 November 2021 to manage cases that are assessed as low public health complexity. As at 2 December 2021, Reach Aotearoa have completed 452 case investigations for low-complexity cases. An initial workforce of 175 people, including clinical and allied health professionals, have been appropriately trained and supervised in case investigation. An additional cohort of people will be trained each week through to 20 December to increase capacity to manage up to 1,000 cases.

Work is ongoing to consolidate the different contact tracing data to ensure all contacts are traced.

Limited Contingency for DHB Staffing Over Summer

Auckland Regional Public Health Service and Waikato are continuing to manage a very high number of cases with social issues which is complicating their work. There are reports suggesting staff deployed to support DHBs and public health units are pulling out due to ongoing fatigue. Reporting from Auckland indicates that workforce capacity is under pressure across DHBs in all areas. The Lakes DHB region has reported that they are experiencing staff pressures. The Northland region is planning how to manage more people in the region as typically, they see a 50% increase in population over the summer period.

Ministry of Health: 6 December 2021 4.26 PM

- Next steps or mitigations if known: Work is underway to plan staff levels for the Christmas period. A new allocation has been set up to facilitate new essential healthcare workers travelling to New Zealand to take up new work.

Pockets of Low Vaccination Coverage Concerning

There are low vaccination rates across some suburbs surrounding well vaccinated urban centres, raising local concerns about poor health outcomes, particularly for Māori regarding COVID-19. For example, Wellington suburbs Cannons Creek, Waitangirua and Nae Nae South have a full vaccination rate ranging between 71% to 76% of the eligible population, compared to other suburbs nearby. Full vaccination rates for Māori are at 60% across all three of these suburbs. In Auckland, there are low vaccination rates in Otara (74% of the eligible population are fully vaccinated, and 61% of Māori are fully vaccinated) and Ferguson (74% of the eligible population are fully vaccinated, and 59% of Māori are fully vaccinated). The suburb Aranui outside of Christchurch has a total vaccination rate of 69% of the eligible population, while 54% of Māori are fully vaccinated. Open-source reporting indicates that many residents in these communities remain unvaccinated, with comorbidities that place them at higher risk for serious disease from COVID-19.

Ministry of Health, Vaccination Rates: 6 December 2021; RNZ News: 3 December 2021, 9.53 AM

- Next steps or mitigations if known:

Hostility Directed at Customer Facing Staff Enforcing Vaccine Passes

Businesses that require staff to enforce and verify vaccine passes are at risk of hostility and anger from customers whilst enforcing the use of vaccine passes, and this is compounded for sectors like hospitality, where the influence of alcohol can compound issues. A survey conducted by the Restaurant Association found that approximately 38% of responding business owners encountered 'aggressive' and 'unhappy' behaviour from customers when enforcing vaccine pass mandates. Police have noted an increase in calls for service regarding hospitality and retail businesses in the move to the CPF, with many seeking advice on dealing with problem customers. These incidents are expected to increase over the next few weeks.

MBIE, New Zealand Police: 6 December 2021, 1.06 PM

- Next steps or mitigations if known: Police are advising businesses to treat any issues around vaccine verification in the same way as other offences: venues should have proper training and plans in place for such circumstances. Hostile or aggressive individuals should be asked to leave the premises, and if issues persist Police should be contacted.

Prevalence of COVID-19 Amongst Returnees Still Higher Than the General Population But Actual Numbers Less Than New Cases Within New Zealand

Recent COVID-19 case numbers in the population have been significantly higher than amongst returnees in recent weeks, however proportionally prevalence of COVID-19 amongst returnees remains much higher than in the New Zealand population. Over the 7 days to 2 December 2021, there was a 7-day rolling average of approximately 3 cases, amongst arrivals to New Zealand currently in MIQ, which equates to approximately 7.2 daily cases per 1,000 arrivals. Over the same period there was a 7-day rolling average of approximately 182 daily cases in the community, which equates to approximately 0.04 daily cases per 1,000 population. This suggests a much higher prevalence of COVID-19 amongst arrivals than in the general New Zealand population.

Ministry of Health: 29 November 2021, 2.11 PM, MBIE: 2 December 2021 11.54 AM

- Next steps or mitigations if known: The government continues to assess options for new arrivals, such as MIQ and home isolation.

Key System Issues & Risks

Police Capacity to Enforce Vaccine Passes Likely to be Stretched

The ability for police to enforce compliance around vaccine passes will likely be constrained over the 2021/2022 summer period. Demand for policing is expected to increase over and above the normal high tempo holiday period and summer months. Family violence, as well as calls for service for mental health, COVID-19 compliance, MIQ assistance and medical emergencies are expected to increase in line with COVID-19 spreading through the community during the summer months. Front-line staff stood down due to exposure to COVID-19 over the summer is also expected to reduce staff availability.

New Zealand Police: 3 December 2021, 1.46PM

- Next steps or mitigations if known: NZ Police plans for the holiday period (including road policing) have incorporated post lockdown factors (including the introduction of the traffic light system). Enforcement priorities for compliance around vaccine passes will be triaged, prioritising high-risk settings, such as schools, hospitals and large venues.

Risks Associated With Isolating Outside of a Managed Facility

A trend is developing where some cases and contacts isolating at home are not answering the phone or are uncontactable, meaning that health workers may be unable to confirm isolation status and Manaaki support. A failure to comply with isolation and quarantine requirements will put the general public at risk, irrespective of whether the individual or bubble isolating is in a major city or rural area particularly with the higher level of movement expected within and between the regions over the summer holidays. Some new cases in holiday areas are unable to travel home because they require public modes of transport (i.e. ferry, flights), whilst holiday accommodation may be unsuitable for them to self-isolate. Some accommodation owners are asking people to leave because they do not want cases in their facility. A high volume of out-of-town cases mean that rural areas and providers are being placed under stress as the infrastructure is unable to support the manaaki required for them to safely isolate.

Ministry of Health: 6 December 2021 4.26 PM

- Next steps or mitigations if known: An escalation pathway that also includes door-knocking has been implemented for uncontactable cases and contacts. If an individual with COVID-19 cannot be found, iwi, Māori, or Pacific providers and community networks may be used to connect with the person. Work is underway to identify a range of options available to health providers and the regional coordination hubs in the event of non-compliance. Guidelines for accommodation providers are being developed (including camping sites and motels) regarding requirements in the event of a positive case in their facility being required to self-isolate. The aim is to have this published by 20 December.

Please note that some risks identified in prior DPMC COVID-19 Situation Reports are ongoing, but have been removed from this report for brevity. Previously identified risks that remain ongoing include:

- Forgery and Improper Use of Vaccine Passes
- Locally Established Border Controls
- Certain Groups Facing Difficulties Accessing My Vaccine Pass
- Confusion Around the CPF Traffic Light System

COVID-19: Across Government Situation Report

7 December 2021

Health

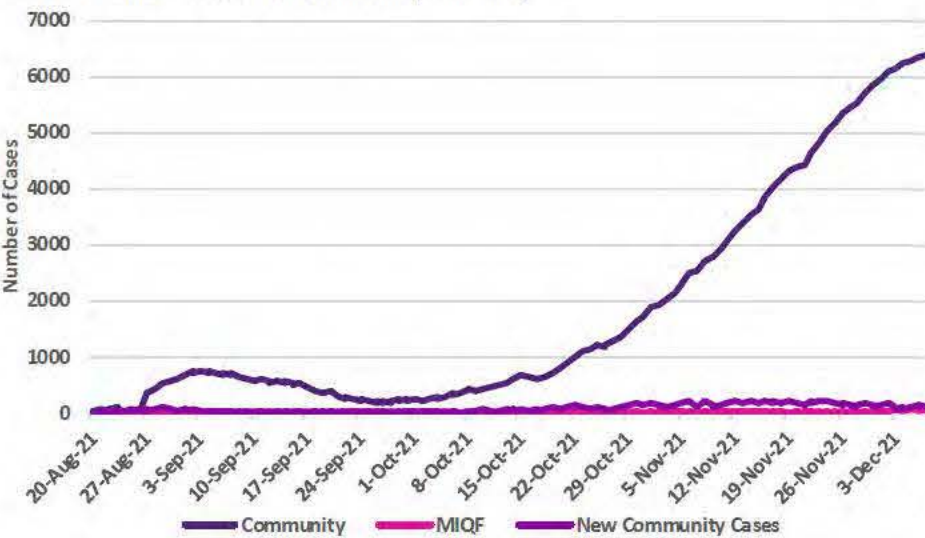
Active COVID-19 Cases Increasing

The number of active COVID-19 community cases has increased to 6,374 on 30 November 2021, the highest level since the start of the outbreak.

The rolling 7-day average has decreased to 121 cases per day compared to 167 per day on average in the previous week (24 November – 30 November).

Ministry of Health: 7 December 2021 1.38 PM

Active COVID-19 Cases in Community and MIQF



Vaccination Amongst Those Infected Since August

41% of those infected with COVID-19 since August to present have been unvaccinated, with a further 24% ineligible for vaccination as they are under 12 years of age. 72% of those hospitalised were unvaccinated or ineligible, and 21% had received just one dose of the vaccine. Only 7% of those hospitalised were fully vaccinated at least 7 days prior to the infection.

Ministry of Health: 7 December 2021 1.54 PM

Health System – Hospitalisations Slightly Declining

There has been an average of 79 people in hospital over the last week (down from 83 the week before), 8 cases in ICU (down from 9 in the previous week), and 3 on a ventilator (up from 1 in the previous week). Currently there are patients in ICU in the Auckland and Waikato areas. In total there have been 18 deaths associated with this outbreak.

Ministry of Health: 7 December 2021 1.34 PM

ICU Beds and Ventilators

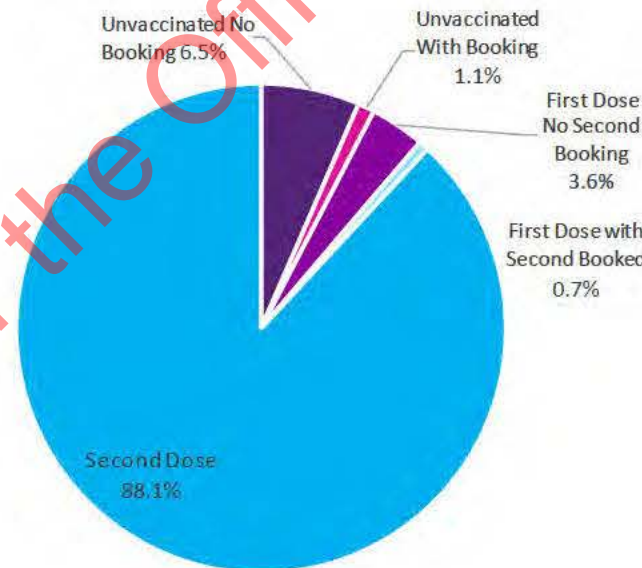
There is ICU capacity available at all DHBs, though availability is very low in Whanganui and Hawkes Bay. There is ventilator availability across all DHBs. Available capacity at Auckland DHB is approximately 5 ICU beds and over 55 ventilators. Waikato DHB has less than 10 ICU beds and approximately 30 ventilators available.

Ministry of Health: 7 December 2021 1.34 PM

Total Vaccinations and Bookings

There have been 3,936,855 first doses of vaccine administered and 3,707,696 people have now been fully vaccinated. There are 74,423 future bookings, with 46,275 for first dose and 28,148 for second dose. This means approximately 95% of the eligible population have had a vaccination or made a booking to be vaccinated. Approximately 5% of the eligible population have not received at least a first dose and do not have a booking.

Ministry of Health: 7 December 2021 10.50 PM



Booster Vaccinations

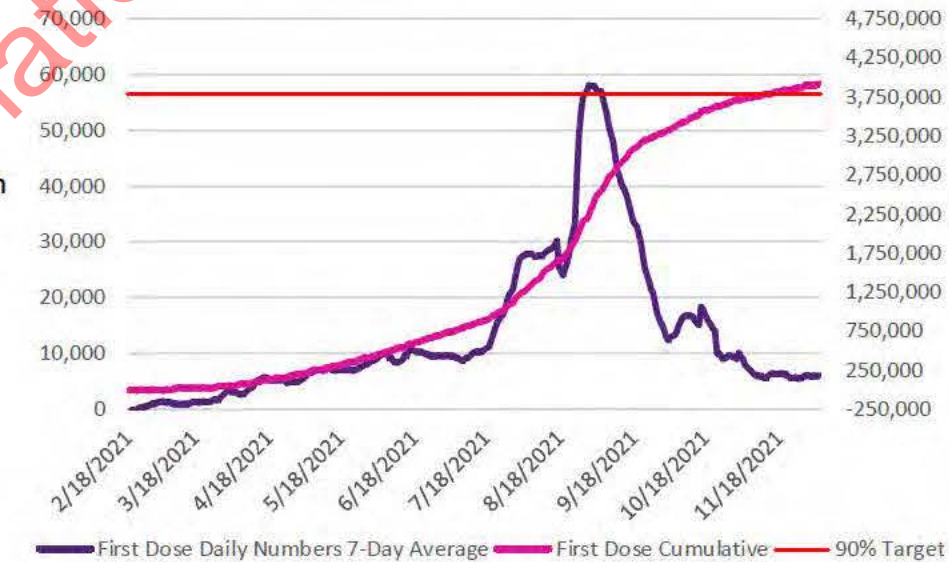
There have been 114,201 booster vaccine doses administered to date. The number of people receiving COVID-19 booster vaccinations is increasing with a 7-day rolling average of 32,172 doses administered in the last week, compared to 23,278 doses in the 7-days prior.

Ministry of Health: 7 December 2021 10.50 AM

Vaccinations By First Dose

The number of people getting their first COVID-19 vaccination per day has been decreasing, with a range of 5,632 and 6,271 of first doses administered over the past 14 days. This is a slight decrease compared to the prior two-week period, with a range of 5,825 and 6,622 first doses.

Our World In Data: 7 December 2021

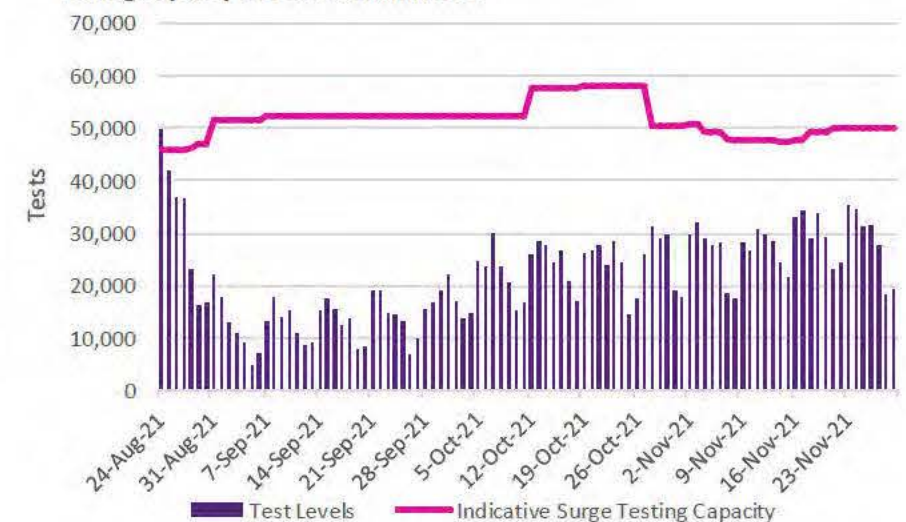


Testing Levels

Testing levels remain below the peak of 49,745 on 24 August, at 21,120 on 6 November. The 7-day rolling average was 28,061, compared to 28,273 for the previous week, suggesting testing levels have slightly decreased.

Ministry of Health: 7 December 2021 8.49 AM

Testing Capacity vs Tests Administered



COVID-19: Across Government Situation Report

7 December 2021

Health

Vaccination Rate by Ethnicity

Vaccination rates amongst Māori remain below that of Pacific Peoples, Asian and European ethnic groups. Vaccination levels for Pacific Peoples are moving closer in parity to European/other groups. Young Māori aged 30 and under continue to be the least vaccinated demographic.

Ministry of Health: 7 December 2021 10.50AM



Themes of Calls to Healthline and '1737 Need to Talk?'

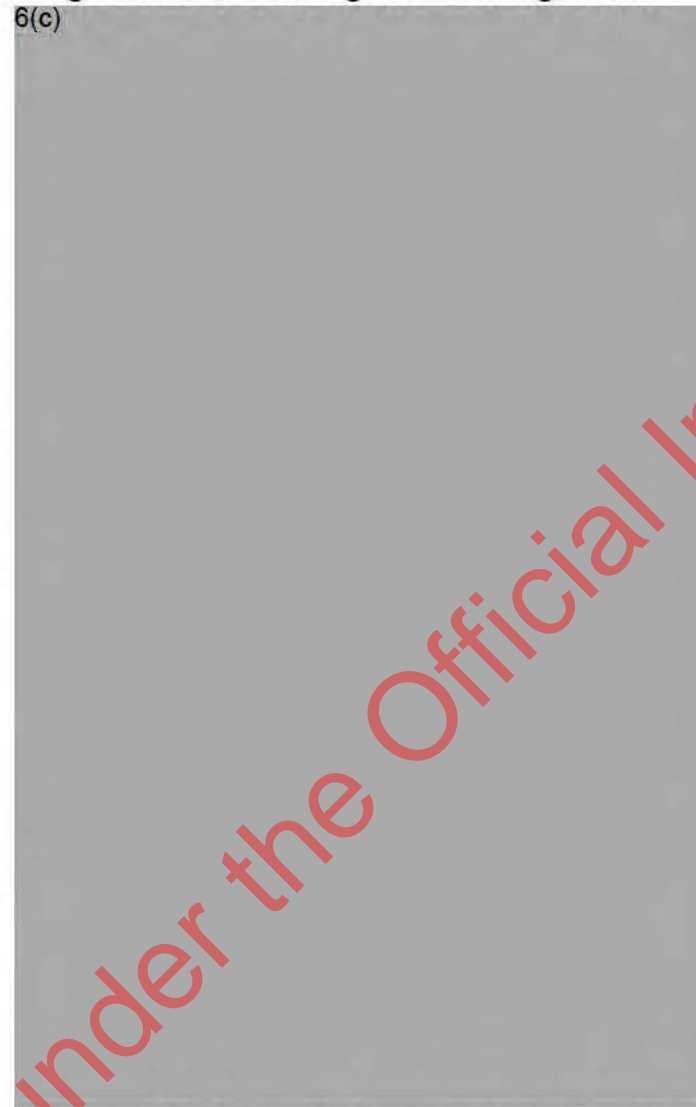
On average there were 8,528 calls to Healthline each day in the last week, down from 9,119 over the previous week. On average 15% were sent for testing. High volumes of calls were experienced on Friday and over the weekend, with many people anxious that their vaccine pass had not arrived in the post or that they were having technical issues with passes on their phone, particularly on Samsung phones. There were also issues around scanning QR codes reported. There were also a number of calls from individuals and businesses concerning the CPF and vaccination pass rules. There has been an increase in the number of calls relating to the new Omicron variant. The Mental Health and Addiction lines remain at expected levels with unmet demand remaining a concern.

Ministry of Health: 7 December 2021 10.50AM

Social & Community

Protest Activity

The focus of protest activity includes anti-COVID-19 mitigation measures and government regulations.



Other smaller activist incidences have been reported across the country such as a small group of protesters repeatedly visiting the Governor General's residence asking to speak with her.

6(c)

[Redacted text]

[Redacted text]

[Redacted text]

[Redacted text]

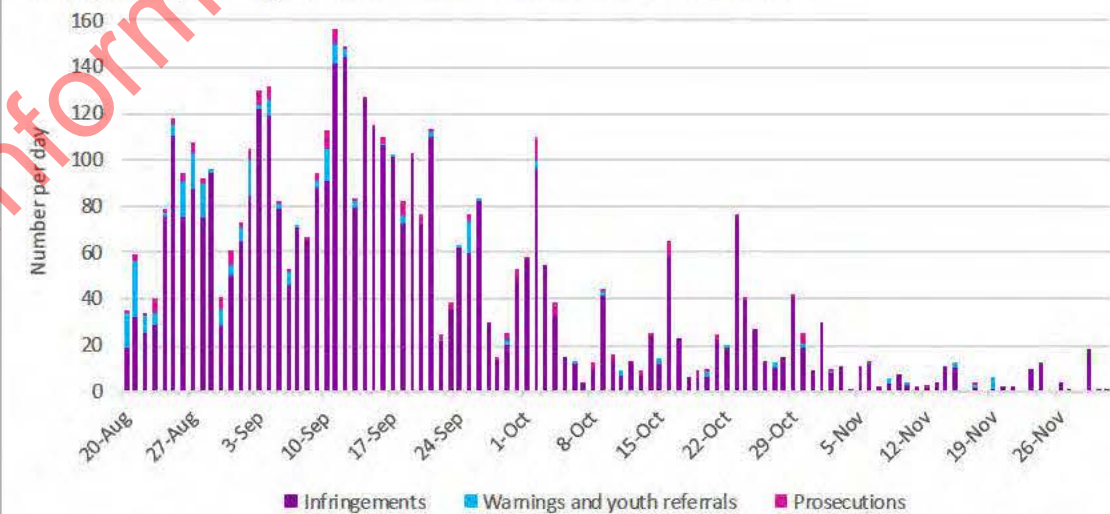
Infringements and Prosecutions Low and Falling

Prosecutions and infringements continue to decrease since Auckland shifted from AL4 to AL3, with the lowest number of infringements in the last week, since the outbreak began. Infringements over the 7 days to 1 December totaled 25, compared to 27 in the 7 days prior. No warnings or youth referrals were recorded over the last 7 days.

New Zealand Police: 3 December 2021, 11.54 AM

Note: As of 23.59 PM on 21 September, Auckland moved from AL4 to AL3.

Infringements, Warnings and Prosecutions under AL3 and AL4 – Auckland



Note: Infringements include non-essential travel, failure to physically distance, wear a mask in premises or on public transport, comply with Orders or the Health Act, close premises, display a QR code, and organising a gathering outdoors.

Public Sentiment

Over the 4-day period ending on 2 December, the three most discussed topics on social media related to COVID-19 were the COVID-19 response, the virus itself, and the vaccine rollout, with volumes around these subjects increasing by 24%, 22% and 52% respectively compared to the previous 4 days. Overall there was a 30% increase in the volume of conversations across all pandemic related subjects. The overall sentiment of conversations became slightly less negative and more neutral, compared to the previous 4 days. Conversations around Christmas, and the potential that some may have to forgo seeing their families has elicited an emotional response, with some people clearly upset. There has also been some racist and problematic content posted in response to media coverage of iwi managed checkpoints. There is also conversation around how to mitigate risks of spreading the virus as a result of travelling, with some saying they will stay at home over summer, others saying they will put in place a plan to limit risk while they travel and some saying that they will disregard calls not to travel to vulnerable areas reasoning that they are double vaccinated and should be allowed to travel anywhere.

DPMC: 3 December 2021 10.31 AM

COVID-19: Across Government Situation Report

7 December 2021

Key Contacts

Purpose	Agency	Contact
Queries from Elected Officials	DPMC	electedofficials@dpmc.govt.nz s9(2)(a)
Business Queries	MBIE	AL4BusinessServices@mbie.govt.nz 0800 424 946
COVID-19 Health Advice	Healthline	0800 358 5453
To Report a Breach	Police	COVID-19 compliance Unite against COVID-19 (covid19.govt.nz)
Information/Apply for Wage Subsidy	MSD	https://www.workandincome.govt.nz/covid-19/wage-subsidy/index.html
Resurgence Payment Support	IRD	https://www.ird.govt.nz/covid-19/business-and-organisations/resurgence-support-payment
Exemption requests for Alert Level 4 measures <i>Note that if you have a general enquiry where someone is simply asking whether or not something is permitted and you are able to respond based on the Order, you can do so. If you are unclear at all, please forward to this new email.</i>	MoH	https://www.health.govt.nz/our-work/diseases-and-conditions/covid-19-novel-coronavirus/covid-19-health-advice-public/covid-19-travel-within-new-zealand
This report is produced by the Insights and Reporting Team in DPMC's COVID-19 Group. If you have any questions, concerns, or feedback, please do not hesitate to contact us.		COVID-19insights@dpmc.govt.nz

Key System Issues & Risks

Social cohesion challenges regarding COVID-19

There are social cohesion challenges regarding COVID-19 which are likely to increase as the CPF continues and reconnecting with other countries occurs. Divisions between vaccinated and unvaccinated groups are becoming more apparent as the latter group face significant restrictions under the traffic light system. This division may drive an increase in behaviours that show dissatisfaction with public health mandates, and the wider government across a range of disaffected groups. There has been an increase in reports of abuse towards staff enforcing vaccine passes at various venues, protest activity around health mandates has been increasing in volume, and there have been several reports of individual politicians and public figures being targeted by anti-government groups.

Source: NZ Police: 9 December 2021, 11.20 AM; Reuters, 10 November, 4.00 AM; DPMC: 10 December 2021, 3.50 PM; NZ Herald, 3 December 2021, 2.37 PM

Previously identified risks that remain ongoing include:

- Lengthy PCR Test Result Turn-around Times
- The Capacity to Treat Large Numbers of Severe COVID-19 Cases is Constrained
- MIQ Capacity is Limited
- The Omicron Variant is Likely to Arrive in New Zealand MIQ
- There is Forgery and Improper Use of Vaccine Passes
- Certain Groups are Facing Difficulties Accessing My Vaccine Pass
- There is Some Confusion Around the CPF Traffic Light System
- COVID-19 Contact Tracing Capability is in Demand
- There is Limited Contingency for DHB Staffing Over Summer
- There are Concerning Pockets of Low Vaccination Coverage
- There Has Been Hostility Directed at Customer Facing Staff Enforcing Vaccine Passes
- Police Capacity to Enforce Vaccine Passes Over Summer is Likely to be Stretched
- There are Risks Associated With Cases Isolating Outside of a Managed Facility

Released under the Official Information Act 1982



COVID-19: Across Government Situation Report

14 December 2021

Health Factors

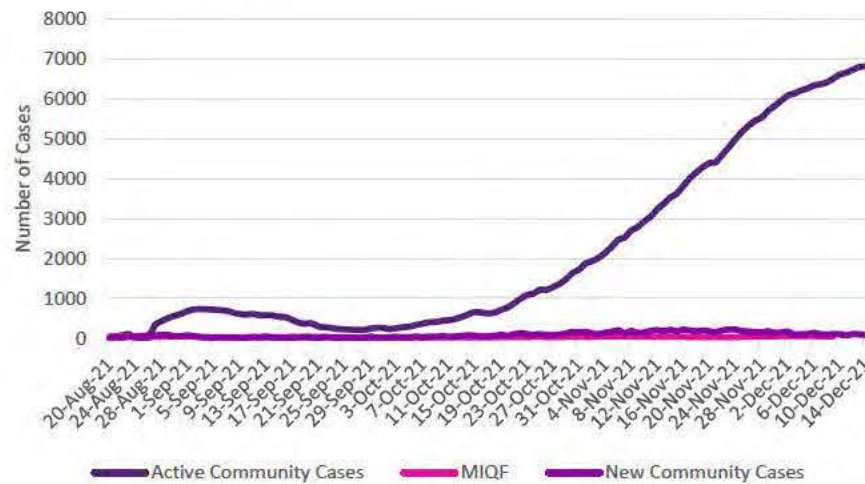
Active COVID-19 Cases Increasing

The number of active COVID-19 community cases has increased to 6,819 on 14 December 2021, the highest level since the start of the outbreak.

The rolling 7-day average has decreased to 91 cases per day compared to 121 per day on average in the previous week (1 December – 7 December).

Ministry of Health: 14 December 2021 1.29 PM

Active COVID-19 Cases in Community



Vaccination Amongst Those Infected Since August

40% of those infected with COVID-19 since August have been unvaccinated, with a further 24% ineligible for vaccination as they are under 12 years of age. 20% of cases had received 1 dose and 40% were fully vaccinated.

65% of those hospitalised for COVID-19 were unvaccinated and 7% were ineligible due to being under 12 years old. 21% had received just one dose of the vaccine. Only 7% of those hospitalised were fully vaccinated at least 7 days prior to the infection.

Ministry of Health: 14 December 2021 11.16 AM

Hospitalisations

There has been an average of 63 people in hospital over the last week due to COVID-19 (down from 77 the week before), and 4 cases in ICU (down from 8 in the previous week). There are currently no COVID-19 patients on ventilators. Currently there are patients in ICU in the Auckland, Bay of Plenty, and Waikato.

Ministry of Health: 14 December 2021 2.16 PM

ICU Beds and Ventilators

There is ICU capacity available at all DHBs, though availability is low in Canterbury, Hawkes Bay, and Lakes. There is ventilator availability across all DHBs. Available capacity at Auckland DHB is approximately 15 ICU beds and over 55 ventilators. Waikato DHB has under 10 ICU beds and approximately 30 ventilators available.

Ministry of Health: 14 December 2021 2.16 PM

Contact Tracing

For contact tracing 'close plus contacts' of cases, the Ministry of Health aims to have 80% of contacts in isolation/quarantine within 96 hours of exposure. Between 7 – 11 December, 76% of close plus contacts were in isolation or entered quarantine within this time.

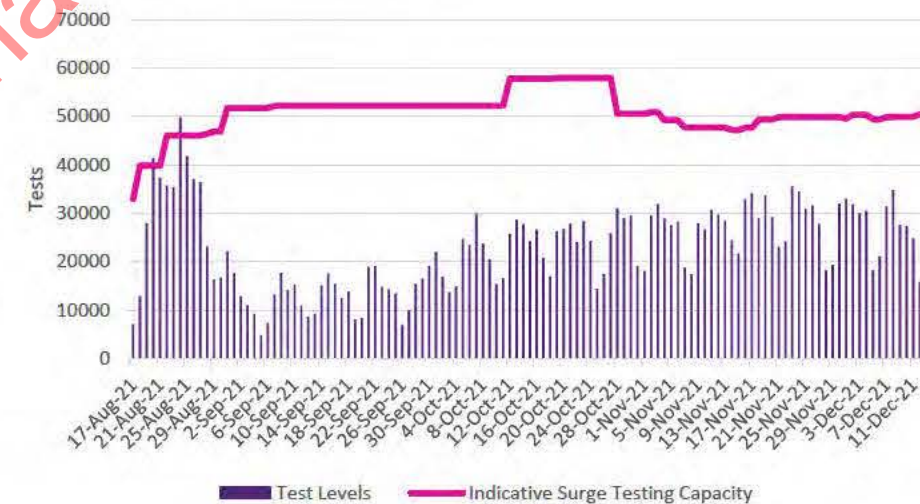
Ministry of Health: 14 December 2021 1.29 PM

Testing Levels

Testing levels remain below the peak of 49,745 on 24 August, at 20,292 on 13 December. Testing levels have slightly decreased, with the 7-day rolling average 25,998, compared to 28,061 for the previous week.

Ministry of Health: 14 December 2021 9.28 AM

Testing Capacity vs Tests Administered



Released under the Official Information Act 1982

COVID-19: Across Government Situation Report

14 December 2021



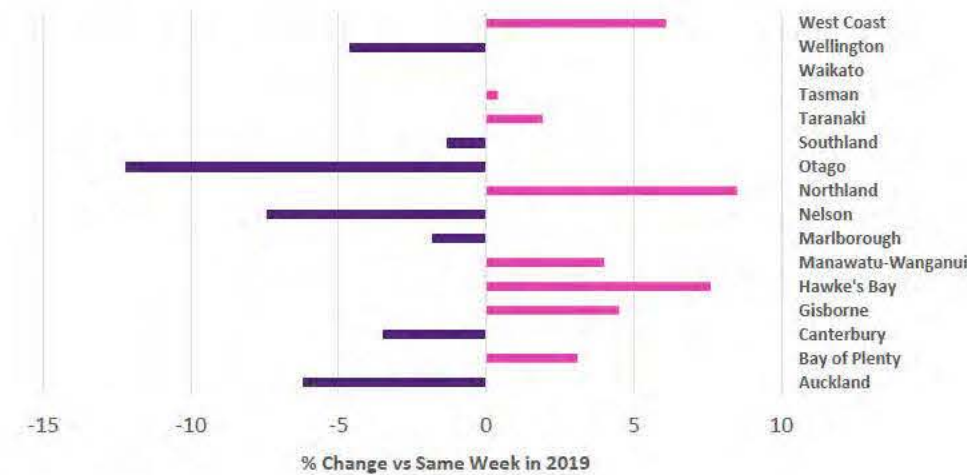
Effects on Economy and Society

Card Spend

Card spend in Northland, Hawkes Bay and West Coast regions was significantly higher than over the same period in 2019 over the week ending 12 December, with notable decreases in card spend in Otago, Nelson, Auckland and Wellington.

Source: MBIE, 12 December 2021, MSD, 14 December 2021 3.12 PM

Card Spend vs Same Week in 2019 by Region (12 December 2021)

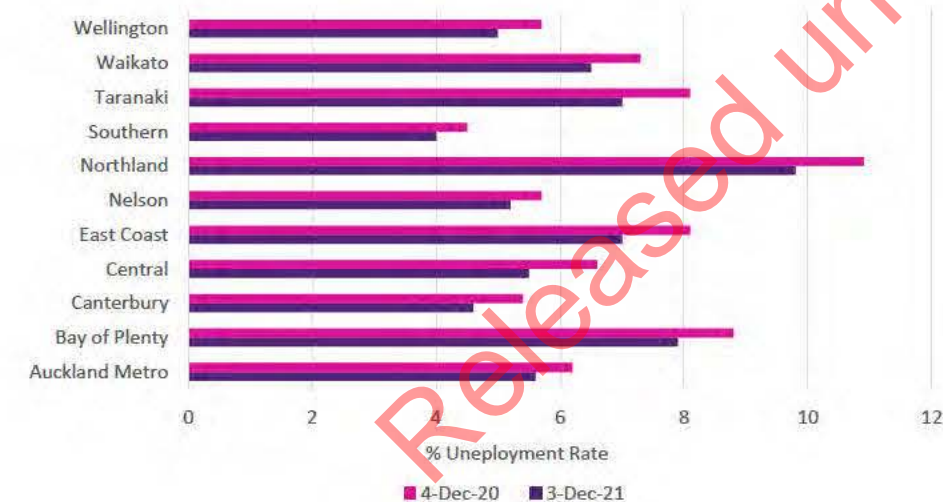


Unemployment

Unemployment across all regions of New Zealand was lower in the week ending 3 December 2021 than the same week in 2020, with the biggest declines in Central, East Coast, Northland and Taranaki.

Source: MBIE, 12 December 2021, MSD, 14 December 2021 3.12 PM

Change in Unemployment Rate vs Same Week Last Year



Impacts on at Risk Populations

Māori

Māori remain significantly overrepresented in active COVID-19 cases in the community. Approximately 48% of all COVID-19 cases reported in the last 14 days were Māori, despite only comprising 17% of New Zealand's overall population.

Māori continue to have the lowest vaccination rates across all DHBs. In Northland, Bay of Plenty, and Whanganui, the proportion of Māori who are fully vaccinated is under 70%.

Source: MOH: 14 December 2021, 1.29 PM; Te Puni Kōkiri: 13 December 2021, 1.48 PM

Pasifika

Pasifika peoples continue to be overrepresented as active COVID-19 cases in the community. Pasifika peoples make up 32% of all COVID-19 cases reported in the last 14 days. This is despite only comprising of 7% of New Zealand's overall population.

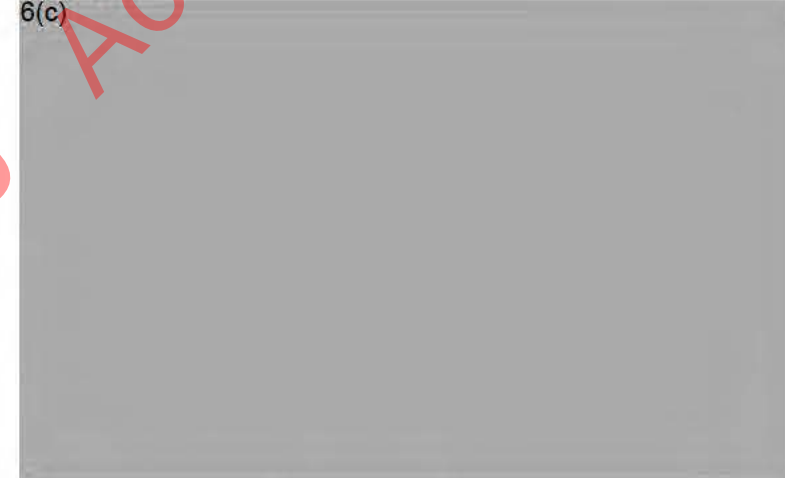
There are reports of language barriers around CPF messaging that are impacting how guidelines are understood, particularly around safely hosting large gatherings.

Source: MOH: 14 December 2021, 1.29 PM; Ministry For Pacific Peoples, 13 December 2021, 3.28 PM

Public Attitudes

Protests

6(c)



Sentiment Towards Restrictions

Research on public sentiment shows that negative feelings towards COVID-19 in New Zealand are decreasing as public health restrictions have eased in the move to the CPF. Feelings of anger and sadness have declined across November and December 2021. Positive and neutral emotions about COVID-19 have been increasing, with the sentiment that New Zealand is moving in the right direction once again with the COVID-19 approach.

These findings are corroborated by social media analysis identifying that all COVID-19 related conversation categories showed decreased levels of negative sentiment. Data also indicates that New Zealanders are less confused regarding day-to-day use of the vaccine pass, with support for businesses that are complying with the new CPF guidelines.

Source: DPMC: 14 December 2021, 1.04 PM; DPMC: 10 December 2021, 3.18 PM

COVID-19: Across Government Situation Report

14 December 2021

Operational Considerations

Self Isolation

There are currently 652 active cases self isolating equating to 9.6% of all active cases. 354 are isolating in Counties Manukau, 156 are in Auckland, 139 are in Waitemata, with 1 each in the regions of Canterbury, Lakes, and Southern.

Source: Ministry of Health: 14 December 2021 1.29 PM

Quarantine

There are a total of 306 community cases in quarantine, occupying 183 rooms. The total number of people in quarantine is 336, occupying 199 rooms. There are a 549 rooms available rooms remaining, with a further 105 under maintenance being cleaned or repaired, there is also a small number of rooms available for overflow. There are also 25 close contacts occupying 10 rooms.

Cases in Quarantine

Site	Region	Total Community Pax in Quarantine	Total Community Rooms Occupied	Total Pax in Quarantine	Total Quarantine Rooms Occupied	Quarantine Rooms Allocated, in Maintenance, Cleaning or Repair	Available Quarantine Rooms	Total Quarantine Capacity
Jet Park	Auckland	73	51	84	59	26	106	202
Novotel IBIS	Auckland	82	55	82	55	44	136	235
Holiday Inn	Auckland	100	45	100	45	19	173	237
Amohia	Hamilton	36	24	51	28	11	67	110
Grand Mercure	Wellington	0	0	0	0	0	13	13
Commodore	Christchurch	14	7	14	7	0	8	15
Sudima	Christchurch	1	1	5	5	5	46	56
Total		306	183	336	199	105	549	868

Close Contacts in Quarantine

Site	Region	Total Close Contacts	Close Contacts Rooms Occupied	Close Contacts Rooms in Cleaning	Close Contact Rooms in Maintenance and Repair	Close Contact Rooms Available	Total Close Contact Capacity
Naumi	Auckland	6	4	3	5	32	44
Amohia	Hamilton	15	4	0	0	0	4
CRIQ	Christchurch	4	2	0	0	-2	0
Total		25	10	3	5	30	48

Source: MBIE 14 December 2021, 8.18 AM

Supply Chain Issues

China's zero-COVID-19 policies at ports are impacting global supply chains and will likely cause additional disruptions to international shipping delays. China has introduced restrictions on foreign shipping vessels from changing crew in China and have imposed up to seven weeks for mandatory quarantine for Chinese vessels. This is causing the diversion of ships at many ports, causing delays and backlogs in shipments travelling through the region.

Source: MOT: 10 December 2021, 3.28 PM; Bloomberg: 25 November 2021, 10.14 AM

Workplace Notifications to WorkSafe

According to WorkSafe data there have been 4,558 notifications of workplace breaches of COVID-19 rules since 18 August 2021. Over the week ending 12 December the largest proportion of notifications were for vaccination pass breaches (153), and mask/PPE breaches (107).

Source: WorkSafe 14 December 11.11 AM

Compliance and Infringements

Online breach notifications and the demand for police to respond to pandemic related events has decreased in the move to the CPF.

In the final week of the Alert Level 3 settings, COVID-19 infringements slightly increased compared to the week prior. It is possible this is the result of anticipated easing of restrictions in the move to the CPF.

Source: NZ Police: 9 December 2021, 12.43 PM

COVID-19: Across Government Situation Report

14 December 2021

Key Contacts

Purpose	Agency	Contact
Queries from Elected Officials	DPMC	electedofficials@dpmc.govt.nz s9(2)(a)
Business Queries	MBIE	AL4BusinessServices@mbie.govt.nz 0800 424 946
COVID-19 Health Advice	Healthline	0800 358 5453
To Report a Breach	Police	COVID-19 compliance Unite against COVID-19 (covid19.govt.nz)
Information/Apply for Wage Subsidy	MSD	https://www.workandincome.govt.nz/covid-19/wage-subsidy/index.html
Resurgence Payment Support	IRD	https://www.ird.govt.nz/covid-19/business-and-organisations/resurgence-support-payment
Exemption requests for Alert Level 4 measures <i>Note that if you have a general enquiry where someone is simply asking whether or not something is permitted and you are able to respond based on the Order, you can do so. If you are unclear at all, please forward to this new email.</i>	MoH	https://www.health.govt.nz/our-work/diseases-and-conditions/covid-19-novel-coronavirus/covid-19-health-advice-public/covid-19-travel-within-new-zealand
This report is produced by the Insights and Reporting Team in DPMC's COVID-19 Group. If you have any questions, concerns, or feedback, please do not hesitate to contact us.		COVID-19insights@dpmc.govt.nz