

# Future Christchurch Update

*The voice of the Canterbury rebuild*

OCTOBER 2016



The Terraces project, along the Ōtākaro/Avon River in central Christchurch, is connecting people to the river and its wildlife.

## Future Christchurch Update signs off

The time has come for the Future Christchurch Update to sign off, but the story of greater Christchurch's regeneration will continue to be told.

The Update was created after the earthquakes in a joint effort between Christchurch City Council and the Government to keep people informed about progress in the recovery.

Much has changed in the intervening years and it is time for a new approach that recognises most people today use digital channels to stay informed and connected, through their laptops, smartphones and tablets.

You will find more details about where to go for any information in this final edition of the Future

Christchurch Update, including a comprehensive Useful Contacts page (23).

Christchurch's regeneration is entering an exciting phase and we're committed to keeping you informed every step of the way.

# Inside:

- 4-5 Christchurch City Council
- 6 Regenerate Christchurch
- 7 Development Christchurch & Linwood Housing Development
- 8 Ōtākaro Limited
- 9 Justice and Emergency Services Precinct
- 10-11 SCIRT
- 12-13 Greater Christchurch progress snapshot
- 14-15 Christchurch City Council
- 16-17 Wellbeing & support
- 18 Land Information NZ, Selwyn & Environment Canterbury
- 19 Housing NZ
- 20 Waimakariri District Council
- 21 EQC & CDHB hospitals update
- 22 Cup & Show Week
- 23 Useful Contacts
- 24 What's on

### Publishing details

This publication is jointly produced by Christchurch City Council and Greater Christchurch Group.

For editorial queries: editor@futurechristchurchupdate.co.nz

For delivery queries: delivery@futurechristchurchupdate.co.nz

ISSN 2422-8664

This work is licensed under the Creative Commons Attribution 3.0 New Zealand licence.

This publication is produced in a way that allows for maximum recovery and recycling of materials, significantly reducing energy use, air and water emissions.



## CHRISTCHURCH CITY COUNCIL

**Karleen Edwards**  
Christchurch City Council Chief Executive

Traditionally, October heralds the beginning of Canterbury's festive season as the lead-up to Christmas begins.

Planning for the region's highly anticipated New Zealand Cup and Show Week in November is now well underway. On page 22 of this issue you can view the calendar of events and read more about the highlights of the week-long festival that showcases Canterbury at its best.

In this issue you will also read more about the launch of the Resilient Greater Christchurch Plan. This plan provides a framework for city and district leaders to work together to enable and empower communities to confidently deal with future challenges. With support from the 100 Resilient Cities (100RC) network, the plan was prepared collaboratively

through the long-standing partnership involving Environment Canterbury, Christchurch City Council, Selwyn District Council, Waimakariri District Council, Te Rūnanga o Ngāi Tahu, the Canterbury District Health Board and government agencies. Turn to page 5 to find out more.

Following the recent health scare in Havelock North regarding drinking water, as a preventative measure, the Council will bring forward the completion of a programme to replace shallow wells supplying drinking water in the northwest of Christchurch with deeper bores. More information is available on page 4.

With spring unquestionably here, now is the time to explore our new cycleways that have been developed around the city. In this issue we are asking for your feedback on

the next phase of proposed Major Cycle Routes. The Major Cycle Routes are different from existing cycle facilities around the city. They make cycling a safe, convenient and enjoyable experience and encourage new groups of people to try getting around by bike. Turn to page 15 to find out more.

This is our last edition of the Future Christchurch Update. It has been a pleasure to keep you informed about Council news over the last two years through this forum. From now on, information and news about Council decisions, events and activities will be available digitally on Newsline – our dedicated online news channel. ■



## REGENERATE CHRISTCHURCH

**Ivan Iafeta**  
Regenerate Christchurch Chief Executive

One of my first priorities in my new role has been to meet and talk with people from different parts of Christchurch – and more importantly listen to their thoughts and perspectives. I've been meeting local people, community groups and organisations across the city, to understand their views not just on what they believe regeneration in their city should look like, but also on how they would like us to work alongside them to achieve it.

I've been extremely impressed, but not at all surprised, about the passion and commitment so many people and groups have for Christchurch. A huge amount of work has taken place already as people with great ideas, inspired by their experiences and the needs of their local community, and with the support

of volunteers, have developed their ideas, proposals and plans.

One of the things that most attracted me to my new role is the opportunity to reconnect people and communities with residential red zone areas. It's important that everyone who feels these areas are special to them and to Christchurch helps to determine how they will be used in the future.

A question that comes up time and time again is: "What sort of city will we leave for our children and the generations to follow?" The decisions about what will happen with these special places will leave a lasting legacy.

One of our first steps has been co-creating our engagement principles with people from the community and local groups. We are also

looking at ways to enable people to meaningfully participate in the conversations and decisions that are ahead of us, and to join with us in a way that suits them.

We want to reach and activate people and communities as we all have an incredible opportunity. Our first step will be to prepare a draft Outline for a Regeneration Plan for a section of the Ōtākaro/Avon River corridor. You can read more on page 6.

We hope that you will join the dialogue in the coming weeks and months. ■

## Stronger Christchurch Infrastructure Rebuild Team (SCIRT) progress

95%

of the way through the entire SCIRT work programme



The SCIRT programme aims to have completed construction in December 2016

Source: Stronger Christchurch Infrastructure Rebuild Team (SCIRT).



**Gerry Brownlee**  
Minister supporting Greater Christchurch Regeneration

We've come a long way since this publication, in its original form as the Earthquake Recovery Update, started way back in July 2011.

Readers out there can rightly feel proud of how greater Christchurch has bounced back from the quakes of 2010/2011, and what an amazing place future generations will inherit, thanks to the rebuilding efforts from everyone involved. The fact that the local economy is still so strong, and the population has grown from what it was before the quakes, is a testament to people's determination to see it through the tough times.

Roads and bridges that were impassable due to quake damage have traffic flowing over them again

and our underground pipe network is stronger than it was before the earthquakes, thanks to the hard work to repair our badly damaged infrastructure.

Thousands of damaged homes have been repaired or rebuilt, and thousands of families have been able to move on from the worst-damaged areas, with the residential red zones now largely cleared to allow exciting new opportunities for communities. The vast majority of insurance claims have also been resolved, allowing people to focus their energies instead on their families and other important issues in their lives.

We've gone from a central city closed off because it was too dangerous, to

new buildings opening on a regular basis, and thousands returning to work, shop and visit attractions such as the re-opened Christchurch Art Gallery, the new Hagley Cricket Oval, or the fantastic new Margaret Mahy Family Playground. And it's only going to get better as other great facilities are progressively completed over the next few years. We are already seeing the development of fantastic new health facilities and schools that will improve the lives of those who use them.

Of course we must not forget there are still some people doing it tough. While this publication is ending, the Government's commitment to Christchurch is not. We will continue to fund programmes to support people in their housing and health,

and offer free expert advice to help people sort their remaining rebuild and repair issues.

We know from our regular Wellbeing Surveys that greater Christchurch continues to offer a great quality of life despite all the adversity, and ultimately that is what the rebuild is all about. We still have a way to go, but the opportunities are endless. ■



The hugely popular Margaret Mahy Family Playground is providing a vibrant social space in central Christchurch.

## A note from the editor

Welcome to the final edition of the Future Christchurch Update.

For me as editor, this is a bittersweet moment. Difficult to say goodbye to a publication that I have been connected with for almost two years, but pleasing to see that it has come to the point where others involved in the regeneration can take over the role of updating members of this community on progress and events.

It has been my pleasure since early 2015 to guide the Future Christchurch Update, a joint effort between Christchurch City Council and the then Canterbury Earthquake Recovery Authority (CERA). CERA's role was taken over by the Department of the Prime Minister and Cabinet in April this year. In total, around three and a half million copies have been distributed to households in Christchurch and the Selwyn and Waimakariri districts.

Before this, I edited the CERA publication, the Greater Christchurch Recovery Update, from June 2012. That was a great time of change: residential zoning decisions were still being made, the central city was partially cordoned off, the Christchurch Central Recovery Plan (and Blueprint) was being released, and people in the greater Christchurch community, as a whole, were trying to fathom the real impact of the earthquakes on their lives. By contrast, in putting together this last edition, we brainstormed some ways to show progress from those early days – and found ourselves spoilt for choice. It may not always seem like it, but genuine progress is being made. You can see some of those achievements, and some still to come, on the centre pages (12 and 13).

The main objective of this publication has always been to keep people informed. So, as you go through this last 24-page bumper edition, you will see our contributors have supplied details of where you can find information on the progress of their projects, and updates on what is happening in your area.

Finally, a huge thank you to the community for supporting this publication – we hope you've found it useful. I would also like to thank the range of individuals and organisations who have contributed along the way. By sharing your stories, progress updates and messages, you have played a vital role in keeping the community informed about the recovery and regeneration of this region.



**Amanda South**  
Future Christchurch Update Editor

# Council fast-tracks water supply bore work

The last remaining shallow wells supplying drinking water in the northwest of Christchurch will be shut down by the end of March next year as the city council speeds up its programme to replace them with deeper bores.

Christchurch City Council Head of Three Waters and Waste John Mackie says there are 22 wells and 12 pump stations in the northwest, supplying about 80,000 people. The area stretches from Belfast in the north to Yaldhurst in the west and Addington in the south. Wells range in depth between 16 and 43 metres. Only four of the 16 wells are 30 metres or less deep.

“The six wells at Auburn, Crosbie and Jeffreys have already been decommissioned and grouted and the six wells at Burnside, Wrights and Harewood are turned off and won't be used unless absolutely necessary during peak demand. The shallowest wells are 16 metres deep and are located at Burnside. They have been isolated and will only be used if absolutely necessary during peak demand.”

Mr Mackie says Ministry of Health guidelines state that the Council must take “all practicable steps” to eliminate risk factors and that is why



Drinking Water Sampling Technician Jan Kimber collects samples for testing. Christchurch City Council regularly tests drinking water for contamination, including daily in areas where there are shallow bores.

**“There are some great water-saving tips on the water supply section of the Council website.”**

John Mackie  
Christchurch City Council Head of Three Waters and Waste

it is speeding up its well replacement programme.

“The reality is everyone in the country has had a wake-up call over what happened in Havelock North, including here in Christchurch. While we are fortunate to have a reliable supply of pure water from aquifers, the northwest zone still has some shallow wells and these are vulnerable to possible contamination.”

In most parts of Christchurch drinking water is sourced from deep wells that carry the highest possible grading for a secure unchlorinated groundwater supply, which is a B. The northwest zone is graded D.

As well as speeding up the replacement programme, the Council will increase its testing regime for *E. coli* (*Escherichia coli*) — testing is done daily in the northwest zone — and check wellheads for possible vulnerability to contamination.

“Testing alone does not remove the risk as it takes 24 hours to incubate the sample to get a result. This means if there is contamination, it can be present for at least a day before we know about it. The only way to remove this risk is to treat the water.”

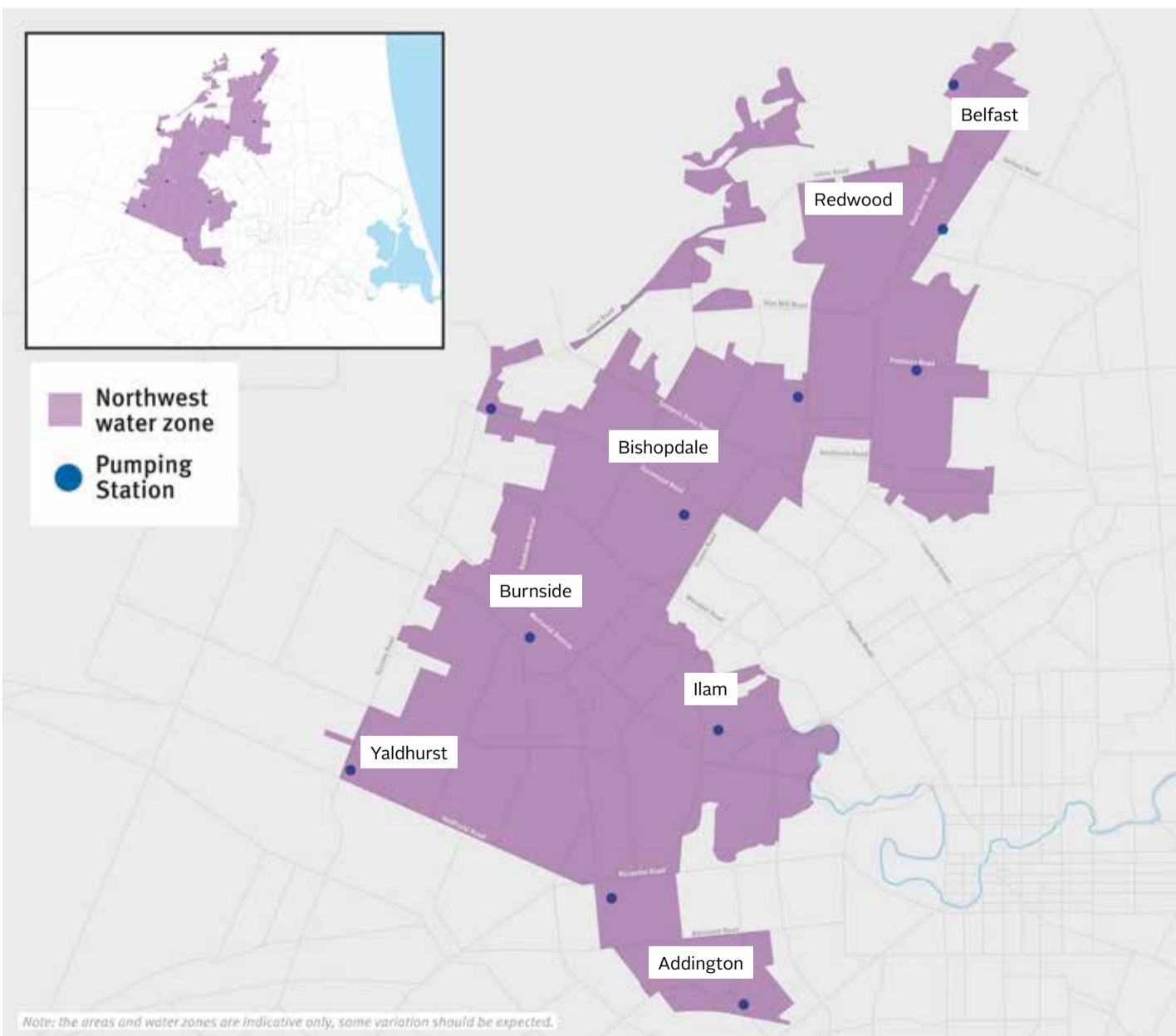
At this stage, the Council has decided not to treat water from shallow bores with chlorine.

Speeding up the well replacement programme is expected to cost about \$480,000. It will be funded by bringing forward money from future budgets and deferring other less critical projects.

Mr Mackie says where possible untreated water will be supplied from deep bores, although the more demand there is, the greater likelihood the Council will have to draw on the shallow wells.

“The shallow wells be used if we need them so demand is a key thing. People's ability to conserve water may be the difference between using these unconfined wells or not. There are some great water-saving tips on the water supply section of the Council website.”

For more information, please visit: [ccc.govt.nz/services/water-supply](http://ccc.govt.nz/services/water-supply)



# Resilience plan released

A plan has been mapped out to ensure Christchurch and the surrounding towns and districts have the resilience to deal with future challenges.

The Resilient Greater Christchurch plan provides a framework for city and district leaders to work together to enable and empower communities to face the future with confidence.

It was put together with the help of the 100 Resilient Cities (100RC) network and builds on the Greater Christchurch's Urban Development Strategy (UDS), which was developed well before the earthquakes.

At its core the vision of the UDS is to have a vibrant, thriving, and prosperous Greater Christchurch by 2041, connected by efficient and sustainable infrastructure.

Both the UDS and the Resilient Greater Christchurch plan have been prepared collaboratively through the long-standing partnership involving Environment Canterbury, Christchurch City Council, Selwyn District Council, Waimakariri District Council, Te Rūnanga o Ngāi Tahu, the Canterbury District Health Board and Government agencies.

“Resilient Greater Christchurch identifies some key issues facing the region right now, pulls together work

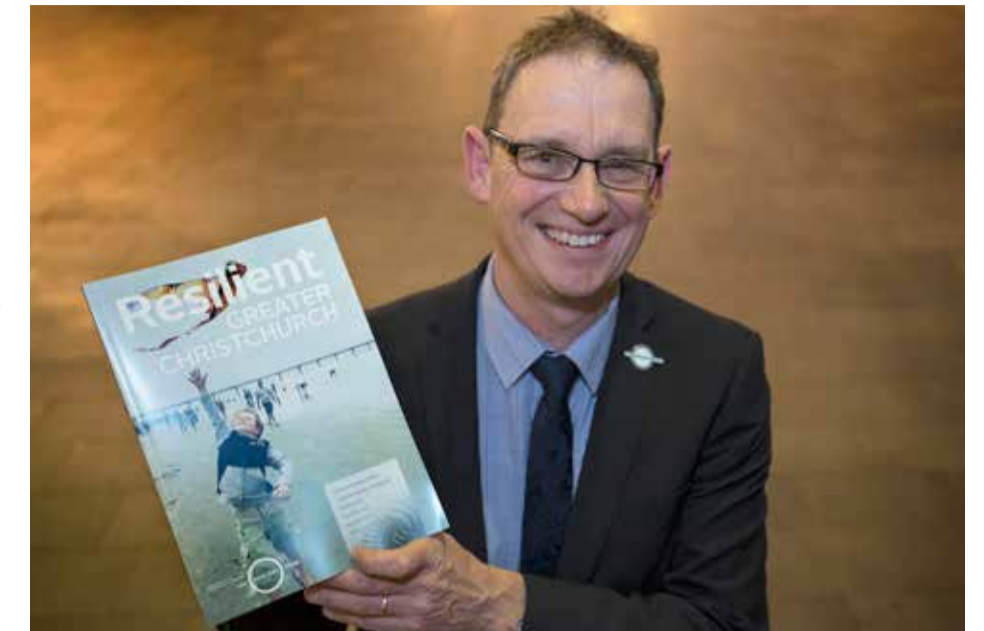
**“We believe that implementation of this plan has the potential to create real change for the city and the surrounding districts**

Mike Gillooly  
Christchurch Chief Resilience Officer

already underway and suggests some new actions for the future,” says Christchurch Chief Resilience Officer Mike Gillooly.

“It is a multi-agency document which spans a number of Councils and outlines how we are going to engage and work with communities to deliver on our goal of making Greater Christchurch more resilient.”

100RC President Michael Berkowitz says the strength of Resilient Greater Christchurch is that it is founded on a collaborative approach and embraced a diversity of perspectives.



Chief Resilience Officer Mike Gillooly says the Greater Christchurch Resilience Plan identifies ways councils can work together with communities. Christchurch City Council has pledged to commit 10 per cent of next year's budget towards building resilience.

“We believe that implementation of this plan has the potential to create real change for the city and the surrounding districts, while generating resilience practices to share with its peers in the 100 Resilient Cities Network and other cities throughout the globe,” Mr Berkowitz says.

Christchurch was among the first 33 cities in the world selected to join 100RC. The network was pioneered by the Rockefeller Foundation and is dedicated to helping cities around the world become more resilient to the physical, social and economic challenges that are a growing part of the 21st century.

Greater Christchurch will be eligible for up to US\$5 million worth of support from 100RC to help it achieve its resilience goals if Christchurch City Council commits at least 10 per cent of its 2017/18 spending to building Christchurch's resilience.

“This is not simply about making our infrastructure and buildings resilient, and it's not about bouncing back to the way things used to be. Resilience is about people and their communities understanding the risks and challenges we face and developing their own ways of taking on those challenges,” Mr Gillooly says.

Visit: [greaterchristchurch.org.nz](http://greaterchristchurch.org.nz)



## NEWSLINE News, information

A new online digital news channel has been set up to help keep Christchurch residents informed about what is going on in their city.

Newsline ([ccc.govt.nz/newsline](http://ccc.govt.nz/newsline)) was set up by Christchurch City Council earlier this year as an easy-to-access digital platform where residents can get up-to-date news and information about city projects, activities, issues and decisions.

“Newsline allows us to communicate directly with residents about things that are happening in Christchurch and Banks Peninsula, and how they can get involved. We want people to

be informed and engaged and to feel they're kept in the loop about what the Council and other key agencies in the city are up to,” says Council Head of Public Information and Participation Diane Keenan.

“I would really encourage people to check out Newsline and to sign up for the weekly Newsline e-newsletter, which provides a summary of the week's top stories.”

**“I would really encourage people to check out Newsline and to sign up for the weekly Newsline e-newsletter, which provides a summary of the week's top stories.”**

Diane Keenan  
Council Head of Public Information and Participation



Information about the flat land residential red zone is being shared by Regenerate Christchurch ahead of wider community involvement in planning how it might be used in the future.

## Regeneration of Christchurch's residential red zone

Understanding how people want to be involved in shaping the future of the flat land residential red zone in Christchurch is a key focus for Regenerate Christchurch.

Since it was established, the team at Regenerate Christchurch has been meeting and listening to people in the community to help inform the organisation's approach to identifying the long term use of the residential red zone in the Christchurch district.

Regenerate Christchurch Chief Executive Ivan Iafeta says, "One of the most important things identified to us during our meetings with people and local community groups is that everyone needs to have access to the same information about the planning process, and the land in the residential red zone."

"We're committed to being open and transparent with how we carry out the planning process for the residential red zone."

Regenerate Christchurch's initial focus will be the Ōtākaro/Avon River corridor which has been divided up into three sections to help with the planning process.

"The conversations we've had with communities have reinforced the logic of starting upstream of the Ōtākaro/Avon River corridor, so our first step will be to prepare a draft Outline for a Regeneration Plan for the section that runs along the river from Oxford Terrace to Stanmore Road.

"This draft Outline will set out a pathway for decisions on the future use of this land and will also create the foundation for how we will involve communities," says Mr Iafeta.

"We then expect to start development of a draft Regeneration plan for this area early next year.

We're conscious of the need for progress. People are excited about what might be possible and enthusiastic about getting started."

In addition to preparing a draft Outline for the top section of the Ōtākaro/Avon River corridor, Regenerate Christchurch will also be undertaking activities to support regeneration planning for the rest of the river corridor.

To support this and other work in the residential red zone, Regenerate Christchurch recently published a range of existing data, maps and reports from various organisations about the flat land residential red zone on its website: [regeneratechristchurch.nz](http://regeneratechristchurch.nz)

While the information is not new, this is the first time it has been collated and made available in one accessible, online location.

Given the thinking and planning work already done by a number of individuals and groups in developing their initial ideas, proposals and plans for the residential red zone, Mr Iafeta says the land information will help everyone build a better understanding of what may be possible in the different areas.

"We want to acknowledge the work people have already done in developing plans and concepts for the residential red zone and find the best ways of moving forward, including opportunities for people to suggest new ideas."

"It's also important to recognise how much land we're talking about.

*"One of the most important things identified to us during our meetings with people and local community groups is that everyone needs to have access to the same information about the planning process, and the land in the red zone."*

Ivan Iafeta  
Regenerate Christchurch  
Chief Executive

Along the Ōtākaro/Avon River corridor the residential red zone spans an area of more than 500 hectares. So we need to understand what may be possible within the constraints of the land, and how projects might complement each other."

The existing land information is not the complete picture and will need further refinement and assessment. "We want to know whether this material fits with local knowledge

and if there is anything more people can contribute. We're also interested in knowing what additional information people would find useful," says Mr Iafeta.

Mr Iafeta says Regenerate Christchurch will be working closely with the community, including local groups, businesses and iwi, in partnership with the Council and Crown.

"We have strong links with our regeneration partners, Development Christchurch Limited and Ōtākaro Limited, and although each agency has separate projects and priorities, our efforts are complementary," says Mr Iafeta.

Ōtākaro Limited has responsibility for delivering central city Crown-led anchor projects and precincts, while Development Christchurch Limited is the Council's organisation responsible for development projects in areas such as New Brighton. ■

Contact details:

[regeneratechristchurch.nz](http://regeneratechristchurch.nz)  
03 353 9600  
[info@regeneratechristchurch.nz](mailto:info@regeneratechristchurch.nz)

*Regenerate Christchurch is a joint Christchurch City Council–Crown entity established to lead regeneration activities across Christchurch, with a focus on the central city, Christchurch's residential red zone and New Brighton.*

## Community ideas sought for New Brighton

Ensuring the community is behind plans for the regeneration of New Brighton will be one of the top jobs of Development Christchurch Limited (DCL) over coming months.

Development Christchurch Limited was set up by Christchurch City Council to contribute to the city's regeneration by supporting development ideas, investment opportunities and regeneration projects. The organisation was specifically tasked with supporting the regeneration of New Brighton as an attractive destination for both locals and visitors.

Over past months DCL has been working on projects that will help

achieve this goal. They include a commercial strategy for the delivery of the Council's New Brighton Centre Master Plan, a business case for the development of a destination project that includes hot salt-water pools, and a feasibility study for the community-led promenade proposal.

DCL Chief Executive Rob Hall says good progress has been made on planning, with the aim of seeking community input before the end of the year.

"We know that, in order for the regeneration of New Brighton to be successful, the community will have to drive a lot of the decision-making. We're already engaging closely with community representatives and we'll be seeking the input of the wider New Brighton community before Christmas.

"I'd like to encourage people to visit our new Regeneration Hub in New Brighton, which is open to the public to talk about regeneration plans and

discuss ideas. DCL and our partners, Regenerate Christchurch and the Council, have people there ready to listen and discuss ideas."

The hub is located at Shop 5, 78 Brighton Mall (down Carnaby Lane), and is open 10am to 4pm, Monday to Friday.

Development Christchurch Limited is involved in a range of other projects that support the wider city's regeneration. One of these projects is the development of the Christchurch Adventure Park, which is due to open on the Port Hills ahead of Christmas. DCL is also involved in plans for the development of the Peterborough Quarter in the central city, where good progress is being made with developers.

"DCL is a delivery and facilitation agency with a commercial focus. We have some specific projects we've been asked to deliver, but we're also here to work with developers and investors who have ideas for the city, and help make them happen. We're talking with potential investors about new ideas all the time and we're always open to discussing development plans and helping to make them happen for Christchurch," Mr Hall says.

To find out more about Development Christchurch Limited, visit: [dcl.org.nz](http://dcl.org.nz)



Involving the community in plans for the regeneration of New Brighton is a key focus for Development Christchurch Limited.

## Linwood houses to provide a home for those who need it most

The Linwood Housing Development will be officially opened on Thursday 13 October.

The development is being completed by the Christchurch Methodist Mission (CMM), one of the largest community housing providers in the city.

After the opening, five families who have been homeless or at risk of being homeless will move in. All five families have young children in their care. Previously they were on the Ministry of Social Development's social housing register and had a severe and persistent need for housing.

"Christchurch is in critical need of more affordable housing for our lowest-income families," says CMM Executive Director Jill Hawkey. "We hope to replicate the model at Linwood so that more homeless families in our community have a warm, affordable and secure place to live and raise their children in."

Three of the houses in the development have three bedrooms each, while the other two have two bedrooms each. All the houses are double-glazed, insulated and



This house, along with four others, will be home to a previously homeless young family after the Linwood Housing Development opens later this month.

designed specifically for young families. The families will be able to share a playground and communal outside area. CMM will provide the assistance that the families need, such as help with parenting, budgeting and social work support.

The houses were previously located in the Kaiapoi Temporary

Accommodation Village (Kaiapoi Domain) and moved to the Linwood site in July.

There remains an opportunity for people to donate a gift to the families moving in, or towards the development. For more information, visit: [bit.ly/linwood\\_home](http://bit.ly/linwood_home) or CMM's website [mmsi.org.nz](http://mmsi.org.nz)



Artist's impression of the Metro Sports Facility viewed from the northern (or St Asaph Street) entrance.



Features include a 50-metre, 10-lane competition swimming pool, a separate diving pool, five hydrosides and a learn to swim pool.

## Work on Metro Sports Facility to begin this month

Work on what will be the largest aquatic and indoor recreation and leisure venue of its kind in New Zealand gets underway this month.

The 34,000-square-metre Metro Sports Facility will be accessible to people of all ages and abilities. It will feature a 50-metre, 10-lane competition swimming pool and a separate diving pool, the largest leisure pool in the country, five hydrosides, fitness spaces and nine indoor courts for sports such as netball and basketball.

"The Metro Sports Facility will be a notable statement in the central city, providing a much-needed centre for aquatic and indoor sport activities in both competitive and leisure settings. The momentum behind our anchor projects is building towards an exciting future for the city centre," says Minister supporting Greater Christchurch Regeneration Gerry Brownlee.

This first phase will see the Antigua Street entrance to Balfour Terrace removed and site preparation work get underway, ahead of main construction starting in around June 2017.

Otākaro Limited Chief Executive Albert Brantley says what will emerge is a world-class sport and recreation facility.

"The preliminary designs recently released by Otākaro and Christchurch City Council show the look, size and complexity of this anchor project, although there will be further refinements. The high level of consultation with future users and the extensive planning that has gone into the Metro Sports Facility will ultimately ensure it is the best facility possible for Christchurch," says Mr Brantley.

Construction of the facility will be managed by Otākaro, and construction will be jointly funded by the Crown and Christchurch City Council, with the Council being the operator of the facility after completion early in 2020.

Christchurch City Council Chief Executive Karleen Edwards says, "An average of 40,000 people are expected to use the facility each week, so we see it becoming an important hub for the community. Council is delighted to be working in partnership on a facility of this scale that everyone can be proud of."

The Metro Sports Facility will be capable of hosting national and international events with 1,000 poolside seats and 2,500 grandstand seats flanking the show court.

Netball Mainland CEO Brigit Hearn says players can look forward to a

*"The momentum behind our anchor projects is building towards an exciting future for the city centre."*

Gerry Brownlee  
Minister supporting Greater Christchurch Regeneration

warmer, dryer season indoors when the Metro Sports Facility opens.

"We have been able to work with Otākaro and Christchurch City Council on this design to make sure the facility will meet the needs of our community-level and elite players," says Mrs Hearn.

The facility will be New Zealand's premier swimming venue says Swimming Canterbury West Coast Chairperson Wayne Rollinson.

"The Government and Council are making a significant investment in swimming, through the Metro Sports Facility, and you can see from the sheer scale of the building why it has been necessary to take the time to get this design right for all sports users," says Mr Rollinson. ■

### The facility's features include:

- 10-lane, 50-metre swimming pool and a separate diving pool
- five hydro slides
- learn to swim pool
- birthday party room
- warm water pool/spa/sauna/steam room
- multipurpose indoor courts with capacity for nine netball courts
- 2,500 retractable seats in the show court
- gym/weights facility
- performance movement centre
- high-performance sports centre
- sports house – shared administration area for regional sport
- café
- childcare facility.

## Ōtākaro Limited – taking a look ahead

Ōtākaro Limited is now six months old and has hit the ground running, delivering anchor projects that will bring people into the central city.

The Crown-owned company has completed The Terraces project along the Ōtākaro/Avon River. Even more notable, may have been the installation of the 8-metre spiral slide at the Margaret Mahy Family Playground, now affectionately known as 'The Tower of Terror'. The restoration plan for Victoria Square has been released, with work set to get underway soon, as will construction of the East Frame public spaces, alongside Fletcher Living's residential development.

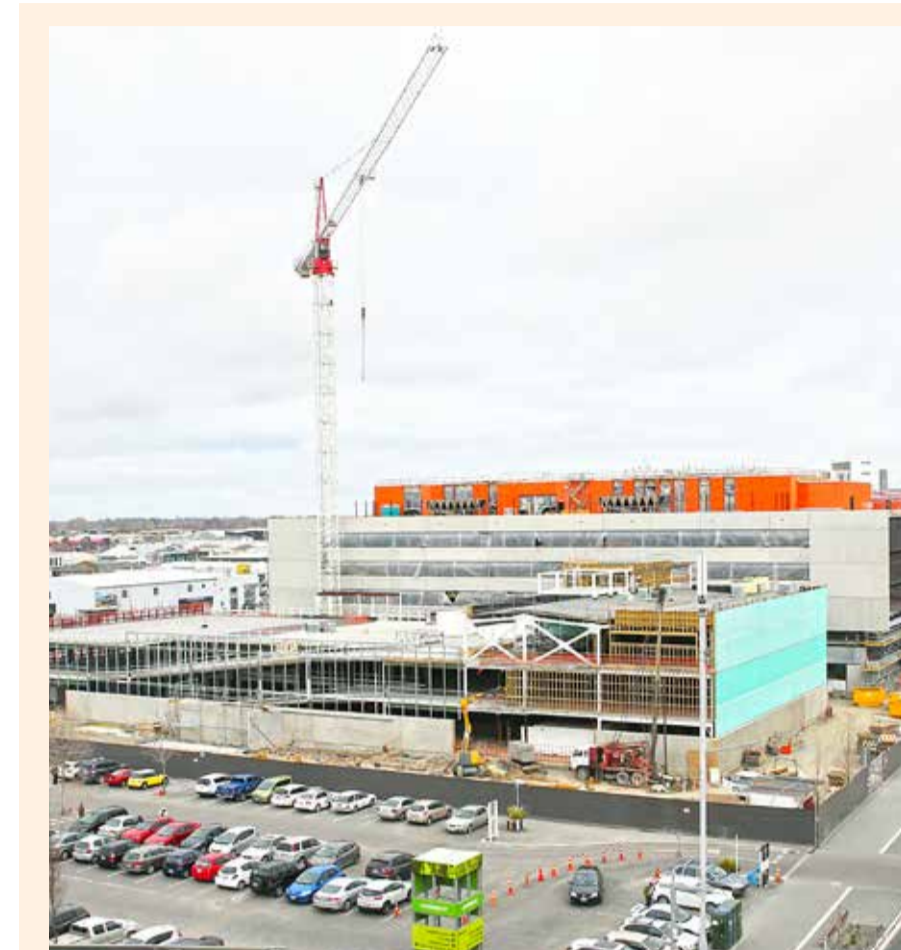
Papa Ōtākaro/Avon River Precinct. The most significant date will be 22 February 2017, which will see the dedication of the Canterbury Earthquake National Memorial.

Maintaining the momentum and consistently demonstrating progress will be the focus for Ōtākaro in the years to come. ■

Contact details:  
 otakarold.co.nz  
 03 357 6300  
 info@otakarold.co.nz



*Ōtākaro Limited is a Crown-owned company delivering key anchor projects and precincts, and managing any potential future sale of Crown-owned land, in the central city.*



More than 500 people are working on the Christchurch Justice and Emergency Services Precinct, which is scheduled to open in 2017. Progress on the operational car park can be seen in the foreground. Photo credit: Pam Carmichael.

## Hundreds of workers bringing Justice and Emergency Services Precinct to fruition

The Christchurch Justice and Emergency Services Precinct is tracking towards completion in mid 2017.

The Precinct is made up of three buildings – the Justice Building, the Emergency Services Building and a car park for operational vehicles – and is located in the block bordered by Colombo, Tuam, Durham and Lichfield streets. It brings together all justice and emergency services in one purpose-built, leading-edge precinct in central Christchurch.

will begin to move in after that and the whole site will be fully operational by mid 2017.

To find out more about the Christchurch Justice and Emergency Services Precinct, visit: [justice.govt.nz](http://justice.govt.nz), or on Facebook – [JusticeandEmergencyServicesPrecinct](https://www.facebook.com/JusticeandEmergencyServicesPrecinct)

Or view progress on time lapse cameras at: [snowgrass.co.nz/cust/justiceprecinct](http://snowgrass.co.nz/cust/justiceprecinct) ■

Construction of the Precinct started in July 2014. The Ministry of Justice will take possession of the Precinct in early 2017 to commence fit-out and furnishing of spaces. Agencies

## Meet the rebuild workers

We spoke to a number of people working in the rebuild and regeneration of greater Christchurch. They gave us their thoughts on what is working and what challenges them on a day-to-day basis.



Ronnie Gonzales  
Painter and plasterer, Switched on Property Maintenance

### What made you want to be part of the rebuild?

I came to New Zealand from Pampanga, in the Philippines, in May 2013. My wife and two children (aged 5 and 3) are now here and I have permanent residency. We want to help with Christchurch – with the rebuild. And of course I wanted to work for my family. It is a good opportunity here.

### What excites you about the future of greater Christchurch and working in the rebuild?

It makes me feel good to help fix people's houses. People are nice here. They are pleased when we do a nice job.

### What challenges you about the rebuild?

The cost of living is a little bit high. Especially the rent, it's too expensive. But it's all good. I'm not too bothered by the roadworks and things like that.



Laura Burke  
Graduate engineer and site engineer, Downer

### What made you want to be part of the rebuild?

I arrived in Christchurch, from Wellington, to study engineering in 2011 – before the February earthquake. I saw it as a good opportunity to start off my career in engineering and be a part of rebuilding a resilient city.

### What excites you about the future of greater Christchurch and working in the rebuild?

I like the idea that Christchurch has the opportunity to start from scratch. It has provided Christchurch with a unique chance to introduce different technologies, innovations and education to the community. It's a project to be completed for the greater good of the city.

### What challenges you about the rebuild?

Rebuilding a city takes time and there are still plenty of projects to start. Once the major landmarks are in place, the characteristics of the city can follow.



Hayden West  
Site Manager, HRS Construction

### What made you want to be part of the rebuild?

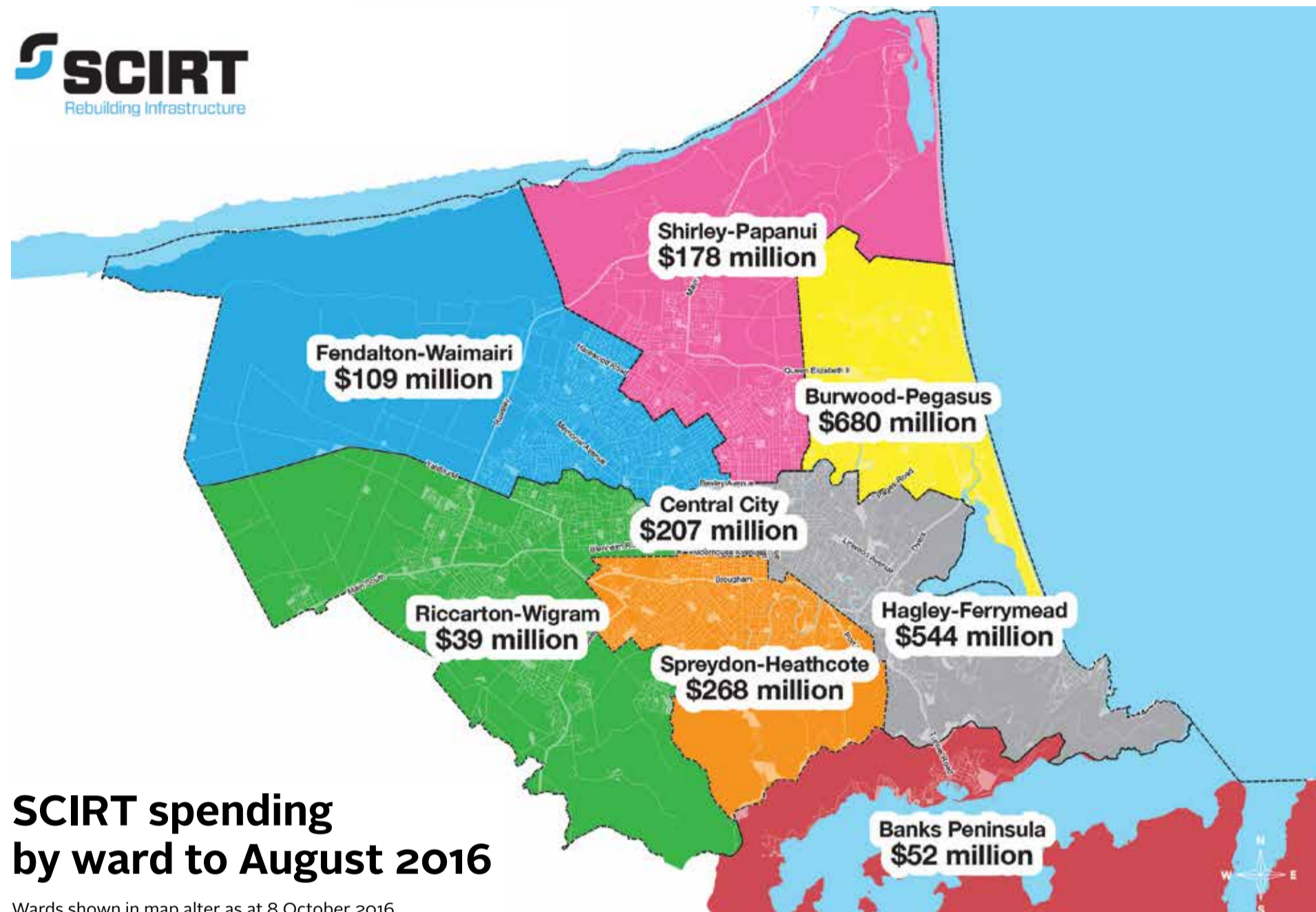
It's given a lot of guys opportunities. I probably moved up the ranks more quickly, because there's a lot more work in Christchurch. I was just finishing my apprenticeship when the earthquake happened, then I moved into carpentry, then foreman and the Site Manager role.

### What excites you about the future of greater Christchurch and working in the rebuild?

I think it will be quite cool sort of looking [back] in 10 years' time and seeing where the city's come within that time – looking back and knowing you've been a part of that.

### What challenges you about the rebuild?

Probably making decisions about anchor projects within Christchurch. They seem to sort of change their minds every five minutes. And [I'd like to see them] potentially, instead of just looking to bowl and rebuild, looking to try and fix some of these projects around town.



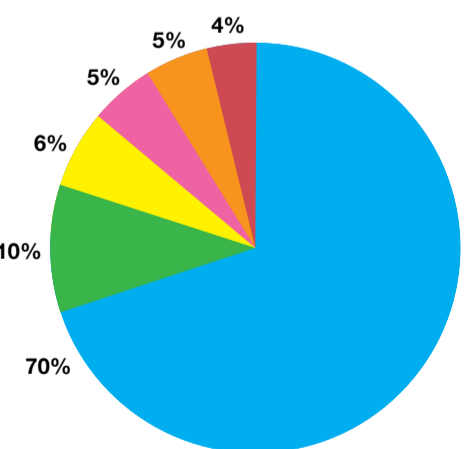
## SCIRT spending by ward to August 2016

Wards shown in map alter as at 8 October 2016.

# SCIRT'S road and pipe repair work enters the final phase

The final push to repair Christchurch's underground pipes and roads damaged in the earthquakes is well underway. Stronger Christchurch Infrastructure Rebuild Team (SCIRT), a partnership between Christchurch City Council, the Government and key contractors, has nearly finished its five-year, \$2.2 billion repair and rebuilding work.

### SCIRT construction spend



- Wastewater
- Storm Water
- Roading
- Fresh Water
- Retaining Walls
- Bridges

### Stronger than before

The city's water and sewage pipes and roads have been rebuilt to be stronger than they were before the earthquakes. Modern materials, new technologies and the latest construction techniques have been used, adding real value to the city.

"These systems are now more resilient and better able to cope with any earthquakes in the future," SCIRT Executive General Manager Ian Campbell says.

### Underground pipes a big job

A great deal of the SCIRT work has been fixing the underground pipes – water, wastewater and storm water.

A priority has been to help get the city's essential services back up and running so that toilets flush, people have clean drinking water and rainwater drains away from homes.

More than 700 kilometres of pipes have been repaired and replaced with modern, more flexible materials and more than 30 new pump stations have been built.

The sewerage system has been the most seriously damaged of all the city's essential services. By the time SCIRT completes its work, more than \$1.5 billion will have been spent on it.

### Severe damage in the east

SCIRT's spending figures show clearly where the most severe earthquake damage has occurred.

Nearly a third of SCIRT's work has been in the Burwood-Pegasus ward which takes in the coastal suburbs of Brighton and Southshore and neighbouring Aranui, Wainoni, Parklands, Burwood and Dallington.

Large parts of the sewerage system have been rebuilt in these suburbs like

the new vacuum wastewater system in Aranui which 2,700 households and businesses are connected to.

The costs in this ward have been \$680 million to the end of August.

The Hagley-Ferrymead ward is another where repairs have been extensive. This area includes the suburbs of Avonside, Bromley, Linwood, Woolston, Heathcote, Mount Pleasant, Redcliffs, Sumner and Taylor's Mistake.

*"These systems are now more resilient and better able to cope with any earthquakes in the future."*

Ian Campbell  
SCIRT Executive General Manager



### Last large projects underway

A few large SCIRT projects remain to be completed in the next three months.

Two of these are repairs to two big wastewater trunk main pipes, the Northern Relief and the Southern Relief. Another two are substantial rebuilds of important pump stations in Woolston and Linwood.

A handful of retaining wall repairs are scheduled for completion in December, such as the rebuild of Evans Pass Road retaining wall in Sumner.

One remaining major bridge repair – of the heritage Gloucester Street bridge in the central city – is well underway. It is scheduled for completion in December.

Over the next three months, thousands of road cones will be steadily packed up as SCIRT completes its programme of work.

### Christchurch support appreciated

SCIRT's work has been disruptive for residents and commuters, and no more so than in the east of Christchurch. All of the partners involved in the infrastructure rebuild programme thank the people of Christchurch for their patience and support as the work has progressed.

### On the home stretch

"SCIRT is close to completing one of the biggest civil works programmes in New Zealand," Ian Campbell says.

"It's an achievement to do this on budget and in a tight timeframe. There's been a huge effort to complete the works programme and return the city's infrastructure to the people of Christchurch.

"The completion of the SCIRT programme will be another major milestone in the regeneration of the city."

*"SCIRT is close to completing one of the biggest civil works programmes in New Zealand."*

Ian Campbell  
SCIRT Executive General Manager

# Christchurch City Council continues the work

The Council is ready to step in when SCIRT wraps up, and complete the remaining work as part of its ongoing programme.

The Council has already launched a \$176 million road resealing programme to smooth the most bumpy roads across the city, with funding support from NZ Transport Agency. This is focused on the central city and the eastern suburbs.

It is part of a wider, \$1 billion, 10-year total roading programme across Christchurch which includes the Accessible City, Sumner Lyttelton Corridor and Major Cycleways projects. The budget contains \$15.6 million for footpath repairs, which were not generally part of SCIRT's programme.

With the SCIRT programme aiming to wind down at the end of 2016, Christchurch City Council has been preparing for some time to continue the work. You can see some of the details in the Council's

Long Term Plan, Annual Plan and associated documents, which are all available online ([ccc.govt.nz](http://ccc.govt.nz)).

More information and details around the Council's programme of work, and where residents can go to find specific information, will be available in coming months.

The Council's General Manager City Services David Adamson says SCIRT has done a fantastic job to get the city's infrastructure back up and running.

"We know that some roads remain bumpy and that footpaths need to be repaired. Work will also continue on the water and wastewater infrastructure. The Council does this sort of work every day – we have factored it in to our planning and we'll make sure it continues."

### Want more information?

Email SCIRT on: [info@scirt.co.nz](mailto:info@scirt.co.nz) to get its Weekly Traffic Update and monthly e-newsletter

Email: [info@scirt.co.nz](mailto:info@scirt.co.nz)

Phone: 03 941 8999

Find out about work in your area: [scirt.co.nz](http://scirt.co.nz)

Follow SCIRT on Twitter: [#SCIRT\\_info #chchtraffic](https://twitter.com/SCIRT_info)

Contact details:  
[www.scirt.co.nz](http://www.scirt.co.nz)  
 03 941 8999  
[info@scirt.co.nz](mailto:info@scirt.co.nz)



# Greater Christchurch progress – at a glance



The North Quad at the Arts Centre has re-opened to provide access to the Library (shown here), which is a hub for the SCAPE Public Art Season 2016.



## Rebuilding

- Total value of residential and non-residential consents issued in greater Christchurch since September 2010 (as at end of July 2016) – almost **\$15.9 billion**  
Residential – **\$9.54 billion**  
Non-residential – **\$6.35 billion**
- Insurers have fully settled **93%** of Canterbury earthquake claims, totalling \$18 billion (Insurance Council of New Zealand)
- Earthquake Commission (EQC) – 68,000 homes repaired in the Canterbury Home Repair programme – **99.6%**
- Stronger Christchurch Infrastructure Rebuild Team (SCIRT) – **95%** of its construction programme complete

## Christchurch City Council community and heritage facilities

### Completed

Facilities rebuilt or repaired to date

**127** Community Facilities  
**17** Heritage

### In construction

Facilities currently being repaired or in construction

**24** Community Facilities  
**20** Heritage

### In Tender/Consent/Design

Facilities expected to be rebuilt/repaired in the next year (or until programme is complete)

**48** Community Facilities  
**19** Heritage

### Total Programme

When complete the programme will have repaired or rebuilt a total of:

**199** Community Facilities  
**56** Heritage



Greater Christchurch's rebuild has created huge employment opportunities in sectors such as construction.



## Places for arts and culture are coming back

The Piano Centre for Music and Arts (opened August 2016)

Christchurch Art Gallery (base isolation retrofit, re-opened December 2015)

Isaac Theatre Royal (restored, rebuilt and re-opened late 2014)

CoCA gallery (repaired and re-opened February 2016)

The Arts Centre Rutherford's Den, Great Hall, Gymnasium and Library restored and re-opened. By the end of 2016, more than half the site will have re-opened. The project is on track for completion in 2019.

Christchurch Town Hall being restored (scheduled to re-open in 2018)

## Tourism is recovering

Visitors spent **\$147 million** in Christchurch in July – a 9% year-on-year increase

Christchurch Airport reported an all-time record of **6.3 million** passengers in the 2016 financial year

Christchurch city guest nights were **2.7 million** in the year to July 2016 – up 4.2%



## People and places



An estimated **100,000 people** visited the Margaret Mahy Family Playground over the summer period.



**82%** of Wellbeing Survey respondents rated their quality of life as good or extremely good.

The Christchurch Adventure Park (mountain bike trails in the Port Hills) is scheduled to open in December.



Development Christchurch Limited is working with the community on a plan to revitalise New Brighton.



## Residential red zones

- Almost all of 7,000 Crown-owned residential red zone properties in the flat lands have been cleared.
- Half the Crown-owned residential red zone properties in the Port Hills have been cleared.
- The Draft Waimakariri Residential Red Zone Recovery Plan is being considered by Minister supporting Greater Christchurch Regeneration in relation to the future use of land in the Waimakariri red zones.
- Regenerate Christchurch will lead a separate process in relation to the future use of the Christchurch residential red zones.



The Terraces project is helping connect people with the Ōtākaro/Avon River, and its thriving eel population.

## Christchurch City Council housing programme

### Completed

Facilities rebuilt or repaired to date

**61** new builds, repairs to **557** social housing units, **133** units demolished

### In construction

Facilities currently being repaired or in construction

**5** new units, repairs to a further **10** social housing complexes

### In Tender/Consent/Design

Facilities expected to be rebuilt/repaired in the next year (or until programme is complete)

**9** social housing complexes under repair currently

### Total Programme

When complete the programme will have repaired or rebuilt a total of:

**850** repairs to social housing units, **191** units demolished



## Central city anchor projects (being delivered by Ōtākaro Limited)

Metro Sports Facility – preliminary design phase completed/early site works starting

Convention Centre – early site works starting (completion scheduled for late 2019)

Canterbury Earthquake National Memorial – on-track for completion by February 2017

Te Papa Ōtākaro/Avon River Precinct – The Terraces project complete

## Other anchor projects

Christchurch Justice and Emergency Services Precinct (being delivered by Ministry of Justice) – scheduled for completion by mid 2017

New Central Library (being delivered by Christchurch City Council) – initial work underway



The community-led Summer of Fun programme aimed to bring people together after the earthquakes.

# City facilities take shape with nod to the past

The City Services group is still hard at work repairing, restoring and in some cases completely rebuilding Christchurch City Council's earthquake-damaged community facilities. Here's a taste of what's happened in the last few weeks.

## New Lyttelton boardroom

Old and new combine in Lyttelton's new Community Board boardroom, where the refurbished oval table used by the former Banks Peninsula District Council takes pride of place.

The new boardroom, at 25 Canterbury Street overlooking Albion Square, was officially opened in September and will be one of the boardrooms used by the new Banks Peninsula Community Board.

Light and spacious, it's a big improvement on the narrow, cramped meeting space the former Lyttelton-Mt Herbert Community Board had been using since earthquake damage forced the closure of the Lyttelton Service Centre. When the boardroom isn't being used for local government business, it is available for community use.



The new Lyttelton boardroom is available for community use.

## Thomas Edmonds Band Rotunda

A \$1.5 million project to rebuild the iconic Thomas Edmonds Band Rotunda has been approved by Christchurch City Council.

The 87-year-old riverside rotunda will be restored to its former glory and new retractable windows added so that audiences can enjoy performances inside the rotunda even when the weather is less than ideal.

The rotunda was damaged in the February 2011 earthquake and was deconstructed for safety reasons. The copper heritage dome that capped the rotunda came through the quakes relatively unscathed and has been kept on site, pending the rebuild of the structure.

Work on the rotunda is scheduled to start in early 2017.



The rebuilt Thomas Edmonds Band Rotunda will have retractable windows, allowing audiences to enjoy performances regardless of the weather.

## Halswell Quarry

Work is underway on the earthquake repairs and strengthening of Halswell Quarry Park's historic buildings, including the Old Stone House.

A well-known landmark, the Old Stone House marks the entrance to Halswell Quarry Park and dates back to 1927 when it was built as the Halswell Quarry Manager's Residence.

Stabilisation work was carried out on the stone-built house after the

earthquakes, and the house now requires repairs and strengthening.

Halswell Quarry's Singleman's Quarters, a stone building that dates back to 1922, will also be repaired. The Quarters were built to house both families and temporary workers for the quarry. There will also be structural repairs to the Quarry's crusher plant buildings, which date back to 1912. All repairs should be completed by the year's end.



Once the Halswell Quarry Manager's Residence, Old Stone House dates back to 1927.

## Introducing Matuku Takotako: Sumner Centre

The new library, community centre and museum complex currently under construction on the corner of Wakefield Avenue and Nayland Street in Sumner has a name – **Matuku Takotako: Sumner Centre**.

In a competition run from May–June 2016, five finalists were selected which were voted on by the public. Matuku Takotako is the original Ngāi Tahu name for Sumner Beach and a name the Hagley–Ferrymead Community

Board, who made the final decision, feels strongly reflects the community and enhances the local iwi identity.

Matuku Takotako: Sumner Centre will incorporate a library, community centre and museum. The two-storey, 1300-square-metre building is expected to open mid 2017.



Matuku Takotako: Sumner Centre is expected to open mid-2017.

# Major Cycle Routes need your input

Christchurch City Council will be asking for feedback on the next phase of Major Cycle Routes over the next two months, while construction will start on another four cycleways.

The Major Cycle Routes are different from existing cycle facilities around the city. They have special features that help make cycling a safe, convenient and enjoyable experience. They're also designed to encourage new groups of people to try getting around by bike.

Christchurch City Council Major Cycleways Programme Manager Clarrie Pearce says, "It's exciting to have a number of these projects

on the go. The Major Cycle Routes have been designed as a network of cycleways that will feed into each other. With seven routes now either in consultation or construction, we will soon start to see that network effect come into play.

"We need the community's help to build the best cycle routes possible, so please do submit your feedback, particularly if a Major Cycle Route is coming through your neighbourhood."

The first routes to be consulted on will be Quarryman's Trail, which runs from Halswell to the city, and Northern Line Cycleway, which follows the railway line from Hagley Park north to Styx Mill Reserve. Following on from those routes, consultation will start on Heathcote Expressway and the final stages of the Rapanui — Shag Rock Cycleway.

Construction will also be starting on the Papanui Parallel, Little River Link,

Uni-Cycle and Rapanui — Shag Rock Cycleway (first stage) routes.

Information about the new cycleways will be delivered to people living and working near the proposed routes, so keep an eye out or visit: [ccc.govt.nz/cycleways](http://ccc.govt.nz/cycleways) for more information. ■



Now is the time to provide input into how cycleways will be built as Christchurch City Council releases designs for sections of four routes for comment.

## Major Cycle Routes

	Consultation	Construction
<b>Quarryman's Trail</b>	Links the central city to Halswell via Addington, Somerfield and Hoon Hay.	
<b>Northern Line Cycleway</b>	Connects Belfast to the central city, running alongside the railway line through Papanui and Redwood.	
<b>Heathcote Expressway</b>	From Heathcote to the central city through Opawa, Woolston and Waltham.	
<b>Rapanui — Shag Rock Cycleway</b>	The second and third stages of this route from Linwood Park to Ferrymead via Linwood Avenue.	
<b>Papanui Parallel</b>	Construction of the full route from the central city to Northlands via Colombo, Rutland and Grassmere streets. It connects to the Northern Line route around where Sawyers Arms Road meets the railway line.	
<b>Rapanui — Shag Rock Cycleway</b>	Stage one of this route links the city to Linwood Park, starting on Worcester Street and joining the Park at Marlborough Street.	
<b>Little River Link</b>	The Addington end of this cycleway goes from Hagley Park along Grove Road, Collins Street and Jerrold Street South before connecting to the shared path alongside the Southern Motorway.	
<b>Uni-Cycle</b>	The next stage of Uni-Cycle stretches from Riccarton Bush through to the western side of the University of Canterbury. The work will be done during student holidays.	

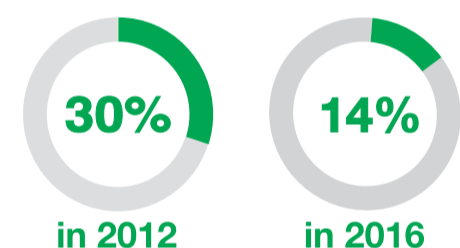


# Survey shows quality of life in Canterbury improving

Life for many in Canterbury is improving, but the impacts are still being felt as the region heads into its seventh year since the September 2010 earthquake.



## Wellbeing Survey and Index



These are the findings from the latest Canterbury Wellbeing Survey and Canterbury Wellbeing Index. The Survey and Index were established to help track the progress of the social recovery of Canterbury after the earthquakes. This is the first time the findings have been released since the Canterbury District Health Board (CDHB) inherited the task of monitoring psychosocial recovery from the Canterbury Earthquake Recovery Authority in March 2016.

Evon Currie, General Manager of Community and Public Health (a division of CDHB), says the Canterbury Wellbeing Survey shows continued improvements in wellbeing across many of the measures.

Eighty-two per cent, or four out of five greater Christchurch residents, say their quality of life is good or extremely good, up from 77 per cent last year. Another measure of wellbeing, the WHO-5 Wellbeing Index, has also improved significantly since September 2015.

"Overall, fewer respondents reported being negatively impacted by the stressors caused by the earthquakes," Evon Currie says.

Mrs Currie says the positive impacts of seeing signs of progress towards a more liveable city, and being able to

access new and repaired recreational, cultural and leisure-time facilities, are at their highest levels since they were first measured.

"New spaces like the Margaret Mahy Family Playground are proving incredibly popular, and providing a real wellbeing boost. Making progress towards a more liveable city is having a positive impact for many."

Although the majority of indicators suggest an improvement in wellbeing, a number of Cantabrians are still struggling with earthquake-related stressors.

"One in three said living in a damaged environment was having a negative impact on their everyday lives. It's also clear that a number of home owners are concerned about the quality of their earthquake repairs," says Evon Currie.

"The data also shows that mental health services remain under real strain.

"For many, time does heal, but international research tells us that the emotional effects of a disaster can last for up to 10 years. The focus of the recovery is now on identifying those at risk of being left behind and ensuring they get the support they need," says Mrs Currie. ■

### Quick facts

**3,100** greater Christchurch residents responded to the April 2016 Canterbury Wellbeing Survey.

**82%** of respondents said their quality of life is good or extremely good (up from 77% last year).

**10%** of respondents said that dealing with EQC or insurance issues was having a strong negative impact on their wellbeing (37% in 2012, 13% in 2015).

**14%** of respondents said being in a damaged environment and/or surrounded by construction work was having a strong negative impact on their wellbeing (30% in 2012, 20% in 2015).

**630** people surveyed who own the dwelling they usually live in, and who have had their insurance claim resolved, were concerned about the quality of repairs or believe re-repairs are required.

**21%** more clients aged 18–64 years accessed mental health services in the year to March 2016, than in the 12 months before the February 2011 earthquake.

Those who are finding it hard and need support can ring the Canterbury Support Line on 0800 777 846

### Ministry of Health/ Canterbury District Health Board (CDHB)

On 1 December 2015, the Ministry of Health, working closely with CDHB, took on some additional leadership for coordinating psychosocial recovery work. On 1 March 2016, they inherited CERA's responsibilities for monitoring and reporting on community wellbeing.

Contact details:

cdhb.health.nz

**Canterbury**  
District Health Board  
Te Pōari Hauora o Waitaha

# Feeling confident about the progress of your earthquake claim?

## Not sure or need assistance? Take action now

As insurers and the Earthquake Commission (EQC) look towards the end of their programmes in Christchurch, now is the time for home owners who still have an open claim, but are not completely confident about how it's progressing, to make a phone call. The call may be just to get assurance that your progress is as good as it should be.

Your issues and concerns are at the heart of all the services listed below. They can work with you to have confidence that you are making progress towards a settlement.

There are seven services as well as the Insurance and Financial Services Ombudsman, all free and all still working in Christchurch. ■

**Advisory - The Residential Advisory Service (RAS)** is focused on progressing issues between home owners, insurance companies and EQC. RAS also has a technical panel made up of structural engineers, and a quantity surveyor that can look over repair strategies for home owners, as well as give high level advice on the appropriateness of the cost of a proposed repair.

Residential Advisory Services (RAS)  
Freephone: 0800 777 299  
Phone: (03) 379 7027  
advisory.org.nz

**Assistance** - The Canterbury Support Line can help with questions, give information, and connect callers with free counselling services or organisations that can offer practical support, information or advice to assist with your wellbeing or that of your family.

Canterbury Support Line  
Freephone: 0800 777 846

**Services coordination/navigation** - Earthquake Support Coordinators are able to assist people navigate their way through the wide range of services involved in rebuilding homes and lives.

Earthquake Support Coordination Service  
Freephone: 0800 777 846  
quakeaccommodation.govt.nz

**Facilitation** - Breakthrough Services is a free service for people who want their earthquake claim to progress in a way they have confidence in.

Breakthrough Services  
breakthroughservices.co.nz

**Advocacy** - CIAS is a charitable trust providing free independent advocacy for people as they face challenges in reinstating their homes and restoring their family and community life to what it was pre-earthquakes.

CIAS  
cias.org.nz



**Temporary accommodation** - For those that need temporary accommodation while their home is being rebuilt or repaired, the Canterbury Earthquake Temporary Accommodation Service.

Canterbury Earthquake Temporary Accommodation Service (CETAS)  
Freephone: 0800 673 227  
quakeaccommodation.govt.nz

**Insurance and Financial Services Ombudsman** - The Insurance & Financial Services Ombudsman Scheme (IFSO) resolves complaints about insurance and financial services.

Freephone: 0800 888 202  
iombudsman.org.nz

You find all of this information and more at [ccc.govt.nz/the-rebuild](http://ccc.govt.nz/the-rebuild)

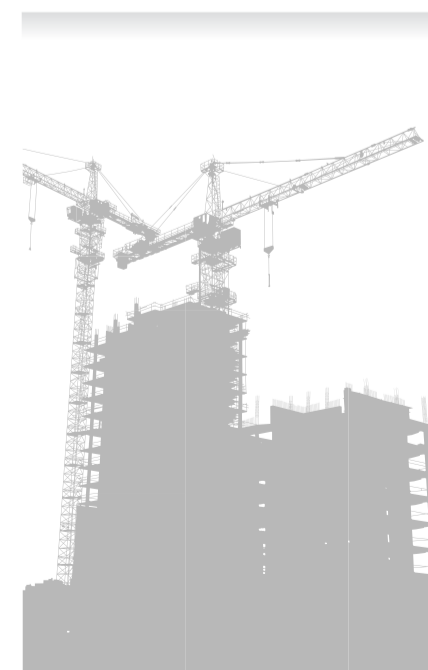
**Ministry of Business, Innovation and Employment (MBIE)** inherited Canterbury Earthquake Recovery Authority's responsibilities for the remaining residential rebuild work including monitoring the pace of insurance settlements, finding solutions for emerging issues, and involvement in the governance of the Residential Advisory Service. MBIE is also analysing progress in the rebuild.

## MBIE and the Canterbury rebuild

Rebuilding greater Christchurch is the biggest economic undertaking in New Zealand's history. MBIE plays a critical role.

### Our rebuild work programmes span all seven business groups, ensuring:

- all workers receive their minimum employment rights and migrants are not exploited
- the market has good information on current trends
- industry, government agencies, and employer and worker groups work together to deliver a safe rebuild
- people are housed in suitable temporary accommodation
- innovation and business activity increases beyond pre-quake levels
- there are enough of the right type of workers
- the robust and responsible procurement of goods and services
- the requirements of the Building Code are met and repairs are undertaken safely and correctly



### Residential Advisory Service

(From May 2013 to August 2016)

More than  
**3,900**

face-to-face meetings with home owners providing free advice

**1,160**  
households placed into village housing temporary accommodation

households placed into village housing temporary accommodation

**5,200+**  
earthquake affected residents helped by the Canterbury Earthquake Temporary Accommodation Service

(From mid 2011 to August 2016)

## LINZ forging ahead with clearances

Land Information New Zealand (LINZ) is focusing on making sure the flat land residential red zone is well maintained for potential future uses, while clearance work progresses in the Port Hills.

The flat land residential red zone has had its last demolition, and only 9 of the 7,000 sections are left to be cleared. LINZ is working on grassing and contouring these sections, and these land treatments are expected to be completed shortly.

"We want our residential red zone to take on a park-like feel while the land awaits decisions on its future use," says LINZ Group Manager Canterbury Recovery Jeremy Barr.

"As the caretaker of Crown-owned residential red zone land, LINZ can now focus more on the maintenance of the flat land properties, getting them weeded, pruned and grassed."

More than half the clearances in the Port Hills red zone have been completed, and LINZ is on track to complete them all by 2018, ahead of schedule.

The combined Christchurch City Council and LINZ project at Deans Head and Shag Rock Reserve is on schedule and the main work will be completed before Christmas this year. The Council will maintain the Shag Rock Reserve site and arrange for fences to be installed once the containers are removed.

**Quick facts**

**Key achievement to date:**  
**35,000** cubic metres of sediment was removed from Deans Head to reduce the landslide risk – requiring **85** truck-and-trailer units a day.

**Key goal for the future:**  
 LINZ expects to clear another 100+ properties this year.

**Contact details:**  
 🏠 [linz.govt.nz](http://linz.govt.nz)  
 ☎️ 0800 665 463  
 @ [customersupport@linz.govt.nz](mailto:customersupport@linz.govt.nz)

**Land Information New Zealand**  
*Toitū te Whenua*

"We've planted around 15,000 natives across the Port Hills red zone so far as part of our plan to maintain the properties, until a future use decision is made," says LINZ Group Manager Port Hills Brenden Winder. ■



The new Lincoln Library and Service Centre is among the facilities built in the Selwyn district since the earthquakes. Photo credit Warren and Mahoney.

## Selwyn District Council update

The first of what became the long series of Canterbury earthquakes struck the Greendale Fault in the Selwyn district in September 2010.

Despite being at the epicentre of that earthquake, the Selwyn district incurred less damage overall than nearby Waimakariri district and Christchurch city. Nevertheless, there was damage, and Selwyn District Council quickly set about on its repair and renewal programme. ■

**Contact details:**  
 🏠 [selwyn.govt.nz](http://selwyn.govt.nz)  
 ☎️ 03 347 2800 or 03 318 8338  
 @ [@SelwynDistrictCouncil](https://www.facebook.com/SelwynDistrictCouncil)  
 @ [@futureforselwyn](https://twitter.com/futureforselwyn)

**Selwyn DISTRICT COUNCIL**

**Quick facts**

<b>Key achievements:</b>	<b>Major new facilities include:</b>	These new facilities have been constructed to cater for Selwyn's growing population. Since September 2010, more than \$2 billion worth of residential consents have been issued in Selwyn (to July 2016).
<ul style="list-style-type: none"> <li>Water/wastewater repairs completed December 2010</li> <li>Roading repairs completed February 2013</li> <li>Cemetery repairs completed June 2016</li> </ul>	<ul style="list-style-type: none"> <li>Selwyn Aquatic Centre, Rolleston (June 2013)</li> <li>Lincoln Library and Service Centre (February 2014)</li> </ul>	

## Working on waste removal

In February 2012, a project was established to remove hazardous materials left in Crown-owned properties in the residential red zones of Christchurch (including the Port Hills) and the Waimakariri district.

The Ministry for the Environment provided \$863,000 from the Waste Minimisation Fund for the project.

A total of 6,768 residential properties were inspected for hazardous waste during the course of the Residential Red Zone Household Hazardous Waste Project. Of those, 2,262 properties were found to have hazardous waste, which was subsequently cleared by a licenced hazardous waste disposal contractor.

Additional household hazardous material was dropped off by former red zone residents at transfer stations and delivered directly to the licenced contractor.

In total, 333.81 tonnes of hazardous waste was collected to June 2016. It was treated to avoid potential

contamination and prevent the release of hazardous substances to the environment.

All safely accessible houses have now been cleared of hazardous waste, minimising the risks to humans and the environment associated with demolition of houses containing unknown types and quantities of hazardous substances.

The project was monitored and audited by the Waste & Environmental Management Team, a task force established by CERA, Environment Canterbury, Christchurch City Council, Selwyn District Council and Waimakariri District Council to regulate the post-earthquake demolition and construction sector. ■

**Contact details:**  
 🏠 [ecan.govt.nz](http://ecan.govt.nz)  
 ☎️ 03 353 9007

**Environment Canterbury Regional Council**  
*Kaunihera Taiao ki Waitaha*



An aerial view of work at Deans Head.

**Land Information New Zealand (LINZ) inherited Canterbury Earthquake Recovery Authority's responsibilities for clearing Crown-owned properties, and the maintenance of Crown-owned land, in the residential red zones.**

## Housing New Zealand's post-quake mission accomplished

It was one of the biggest social housing challenges ever attempted: to repair 5,000 quake-damaged homes and build 700 brand new homes. And it was achieved in less than three years, when Canterbury was still reeling from the worst sequence of major earthquakes ever to hit New Zealand.

Housing New Zealand established its Canterbury Earthquake Recovery Programme shortly after the September 2010 event, and expanded it in the immediate aftermath of the February 2011 quake. The programme was charged with restoring the social housing stock in Canterbury to pre-quake numbers.

The earthquakes created an opportunity to not only repair damaged homes, but also upgrade them and make them more modern and fit-for-purpose for the future. There was also an opportunity to build hundreds of new warm, dry and modern homes for tenants.

From 1 July this year, Housing New Zealand's Asset Development Group took over responsibility for the ongoing new build programme for the region, with plans to build more than 100 new homes in Christchurch every year.

Meanwhile, in a first for any Government agency associated with the rebuild, a new book detailing how Housing New Zealand responded to the earthquakes has just been released.

Commissioned by Housing New Zealand, *Creating a Legacy of Social Housing* tells the story of how the organisation responded in the immediate aftermath of the earthquakes and formed the Canterbury Earthquake Recovery Programme. The story includes the impacts the earthquakes had on its

**Quick facts**

Since the earthquakes, Housing New Zealand has:

- Repaired **5,000** quake-damaged homes
- Built **700** new homes

From here, Housing New Zealand is committed to building at least 100 new homes each year.



Housing New Zealand has completed its Canterbury Earthquake Recovery Programme, but it will continue building new warm, dry and modern social housing, such as this development in Broomfield, and has more than 100 new homes planned annually.

properties, the tenants who lived in them, and its staff.

Written by Christchurch author Vivienne Allan, the book describes what happened behind the scenes as Housing New Zealand structured itself to respond to the damage and chaos caused by the earthquakes.

Housing New Zealand Board Chair Adrienne Young-Cooper says, "This book is a success story and it is also a reminder to us all of what happened during the dark days and how remarkably our staff rose to the occasion."

The book is an important permanent record of how the programme team, supported by many other Housing New Zealand staff from around the country, achieved its vision to create a legacy of social housing in Canterbury.

It can be found at: [hnzc.co.nz/publications/creating-a-legacy-of-social-housing/](http://hnzc.co.nz/publications/creating-a-legacy-of-social-housing/) ■

**Contact details:**  
 🏠 [hnzc.co.nz](http://hnzc.co.nz)  
 ☎️ 0800 801 601  
 @ [enquiries1@hnzc.co.nz](mailto:enquiries1@hnzc.co.nz)

**Housing New Zealand**  
 Housing New Zealand Corporation

Hollie, Sumner

**"Quiet times are a real treat so we're both pretty keen on drawing."**

Real families aren't picture perfect. For tips, tricks and fun whānau activities, head to [alright.org.nz/parents](http://alright.org.nz/parents)

**all right?**  
 Housing New Zealand Corporation

Progress update – October 2016

# Kaiapoi Marine Precinct Plan

The Kaiapoi Marine Precinct Plan was developed out of the aftermath of the Canterbury earthquakes in 2010 and 2011. The Plan takes a long-term view of developing the Kaiapoi River as a community focus. A number of projects are being undertaken catering to all river users – boaties, rowing teams, fishers, walkers, families and other recreational users. Of the 14 projects in the marine precinct area, 2 have been completed (around the existing wharf structure), another 11 are currently in the design stage and the remaining projects are scheduled to all be completed by the end of 2017.



Contact details:  
 waimakariri.govt.nz  
 03 311 8900  
 info@waimakariri.govt.nz  
 WAIMAKARIRI DISTRICT COUNCIL

Legend item	Description	Anticipated completion
1	Terrace bleachers Architectural riverside bleachers and steps introduce informal seating and access to the small boat pontoon, as well as providing a high-quality connection between the proposed Riverview development and the views and activity of the Kaiapoi River.	2017
2	Pontoon 1 Floating pontoons connect the new riverside bleachers (adjacent to Williams Street bridge) to the existing wharf, providing access for smaller watercraft, directly into the heart of Kaiapoi.	2017
3	Boardwalk Timber boardwalk promenade with seating, dining and walking opportunities unite the Riverview development and terrace bleachers.	2017
4	Proposed Riverview development (private) Private-led retail and hospitality development proposal on the former Bridge Tavern and Hansens Mall sites, with views both across the river and down to the proposed terrace bleachers and timber pontoon.	
5	Steps and river deck Steps connect the Ruataniwha Kaiapoi Civic Centre on Raven Quay to the river access deck, creating informal seating opportunities. The steps and deck respond positively to the Riverside bleachers and pontoon on the riverbank opposite.	Early 2017
6	Fishing platform The fishing platform assists the traditional activity of the Kaiapoi River, adding life and activity to the river's edge adjacent to the town centre.	Early 2017
7	Stopbank walkway Stopbank walkway improves the connection between Williams Street and the informal stopbank pathway via the steps and river deck.	Early 2017
8	Upgraded entry zone The upgraded entry zone draws people from the town centre, improving visual and physical connections to the river.	Early 2017

Legend item	Description	Anticipated completion
9	Replacement old wharf Replacement of the older dilapidated section of wharf with a new rock embankment, and new grassed seating and leisure areas, plantings and walkways; also including stopbank realignment and raising.	Completed
10	Wharf upgrades Strengthening and repairs to the retained newer section of the existing wharf to improve safety and durability; also including reinstatement of utilities for marine berthing.	Completed
11	Riverbank walkway Upgrades to the riverbanks and walkways along both banks of the Kaiapoi River. New surface treatment and potentially interpretive panels. (Timing dependent on Waimakariri Residential Red Zone Recovery Plan decision and implementation.)	
12	MV Tuhoe berth removed Deconstruction of the earthquake-weakened former MV Tuhoe berth, and replacement with rock embankment and new plantings.	2016
13	Shared public boat ramp Access road and boat ramp improvements to public slipway for small/medium boats, adjacent to the new coastguard building.	2017
14	Pontoon 2 Floating timber pontoon adjacent to the new slipway for public and coastguard shared use.	2017



waimakariri.govt.nz

# Major hospital projects on track

Over the past five years, Canterbury District Health Board (CDHB) has been a key player in the regeneration of Christchurch and the wider region after the Canterbury earthquakes. Yet planning for the redevelopment and future-proofing of its hospital facilities began back in 2009. That planning was based on population projections predicting a marked increase in the proportion of elderly people in Canterbury by 2020.

With so many of Canterbury DHB's buildings damaged by the quakes, its existing plans for new facilities were fast-tracked. An extensive, ongoing earthquake repair programme was also put into action.

Groundworks for new facilities began at Burwood Hospital in mid 2013, and at Christchurch Hospital's Acute Services building in October 2014.

In February 2016, a \$72 million Outpatients building was also given the green light. Groundworks are now underway on the St Andrews Triangle site, adjacent to Christchurch Hospital.

In June 2016, Burwood Hospital's new facilities for Older Persons' Health and Rehabilitation opened their doors to patients and visitors, including 88 patients and around 250 staff transferred from The Princess Margaret Hospital.

Officially opened by Prime Minister John Key in August 2016, the new buildings at Burwood include a large reception atrium leading to three ward blocks (each three storeys high), which take the total number of beds at Burwood to 230. There is a separate

wing for Older Persons' Mental Health, a large state-of-the-art Radiology department, and a new Outpatients department capable of handling up to 80,000 patients per year.

The Acute Services building is rapidly taking shape at the rear of Christchurch Hospital. The record-breaking concrete foundation slab was poured over several months in 2015. Steel framing now sits atop the building's seismic base isolators.

## Outside Christchurch, since the earthquakes CDHB has:

- built and opened the Rangiora Health Hub – a brand-new hospital building for the township
- built and opened another new hospital in Kaikoura – Kaikoura Health Te Hā o Te Ora
- opened several new community health hubs across Christchurch
- built a new electricity substation to power Christchurch Hospital and the new Acute Services building.



The record-breaking concrete foundation slab for the Acute Services building contains over 15,000 cubic metres of concrete, and enough reinforcing steel to stretch from Christchurch to Melbourne.

## Currently CDHB is:

- building a new acute assessment unit and theatre block at Ashburton Hospital
- aiming to begin work on a health centre to replace Akaroa's quake-damaged health facilities in 2017
- a key partner in the development of the Health Precinct.

To find out more, visit: [cdhb.health.nz](http://cdhb.health.nz) (and search under [itsallhappening](http://itsallhappening))

Quick facts	
Burwood Hospital	\$200 million 2013–2016: Completed
Christchurch Acute Services building	\$450 million 2014–2018: On track
Christchurch Outpatients building	\$72 million 2016–2018: On track

# EQC's Canterbury work nearing completion

The work of the Earthquake Commission (EQC) in Canterbury is entering its final phase.

## EQC progress snapshot

**Canterbury Home Repair Programme**

99.6% of 68,000 first-time repairs are complete

**Claims and settlements**

Of 166,972 properties with a valid dwelling claim:

99.8% of cash settlements are paid

99.6% of managed repairs are complete

About 68,000 first-time managed repairs undertaken by the Canterbury Home Repair Programme will have been completed by the end of this year. EQC will also have completed cash settlements of building claims for approximately 99,000 properties. That means that the claims on about 167,000 homes in Canterbury will have been resolved.

The remaining Canterbury claims for land damage on green zone properties and red zone properties, not owned by the Crown, are targeted to be settled by the end of 2016.

Looking ahead, EQC is putting in place plans for completing its remaining work in Canterbury in 2017 and ensuring it has the necessary staff, contractors and resources to do this, EQC General Manager Customer and Claims Trish Keith says.

EQC has also been looking at the lessons from Canterbury, Mrs Keith says.

"Both the Canterbury earthquake sequence and the subsequent rebuild were unprecedented. In responding to a natural disaster of the magnitude experienced in Canterbury we have learned important lessons.

"As a result, we are working much more closely with community groups, communicating more effectively with customers and we have streamlined our processes for resolving customer claims," says Mrs Keith.

"The new approaches have been applied by EQC in its work, most recently in resolving claims from the February 2016 earthquakes. The nearly 14,000 claims received for that event are on track to be resolved by year's end."

So far, about \$9.4 billion (including GST) has been paid out by EQC on the Canterbury rebuild, which has been funded through the Natural Disaster Fund and the reinsurance arrangements EQC has in place.

"An important part of our work is ensuring ongoing reinsurance cover for New Zealand in the event of another natural disaster," Mrs Keith says.

For progress updates, visit: [eqc.govt.nz](http://eqc.govt.nz) where you can also sign up for the EQConnects e-newsletter.

Contact details:  
 eqc.govt.nz  
 0800 DAMAGE (0800 326 243)  
**EQC**  
 EARTHQUAKE COMMISSION  
 Kaitiaki Takekōwhiri



## NZ Cup and Show Week

The sound of the racetrack, the scent of sawdust, and the taste of summer just around the corner: it can only be NZ Cup and Show Week, New Zealand's biggest and most exciting spring festival.

The eight days of celebration begin on Saturday 5 November, and tickets are available now at [nzcupandshow.co.nz](http://nzcupandshow.co.nz). Early birds will be rewarded with special deals – particularly for families visiting the Canterbury A&P Show.

### Sothys New Zealand 2000 Guineas Day

**Saturday 5 November**

It all starts at Riccarton Park Racecourse – the week's events begin with the **Sothys New Zealand 2000 Guineas Day**, giving a great taste of what lies ahead. Guineas Day sees the very best three-year-olds hoping to follow in the hoof-prints of some of the greats of the Australian turf.

Start the day on just the right note with the **All Sports Brunch** hosted by double New Zealand sports representative, sports commentator and Newstalk ZB host Lesley Murdoch and Simon Doull, New Zealand cricketer and sports commentator. Join Lesley, Simon and some very special guests for a morning of great interviews, brunch and racing.

### Christchurch Casino New Zealand Trotting Cup Day

**Tuesday 8 November**

The second Tuesday of November always has its own vibe in Canterbury – **New Zealand Trotting Cup Day** at Addington Raceway is one of the most glamorous and anticipated social events on Canterbury's calendar. This year, the 113th running of the race that attracts more than 20,000 punters and revellers will see the national anthem sung a cappella by local legend **Stan Walker**, who's stoked to be a guest of honour at his first Cup Day.

### Fashionistas take note

Whether you're into haute couture or using your body as an art canvas, the **Westfield Riccarton Style Stakes Fashion and ZM Body Art** competitions are offering up more than \$20,000 worth of prizes at Cup Day on Tuesday 8 November.

If you've got fashion flair and know how to work a catwalk then make sure you enter **Fashion in the Field** in association with Millennium Hotels and Resorts. Come along to the **Christchurch Casino New Zealand Cup and gavelhouse.com 1000 Guineas Day** at Riccarton Park Racecourse on Saturday 12 November, catch the judges' attention and win some great prizes. There is no entry fee and racegoers can enter a variety of categories.

### Canterbury A&P Show

**Wednesday 9 – Friday 11 November**

The **Canterbury A&P Association's annual Show** has delighted visitors – young and old – every year since it began in 1863, with around 100,000 people drawn each year by gourmet food and wine, stomach-turning rides, feature entertainment, and the sights and sounds of the farmyard.

You'll find plenty to tantalise your tastebuds in the Show's revamped **Food & Wine NZ Pavilion**. This favourite has added a seated food hall and an outdoor wine courtyard overlooking the entertainment on the Village Green. As usual you'll be able to enjoy gourmet foods from around the world and watch cooking demonstrations from some of New Zealand's top chefs.

**NEW ZEALAND Cup and Show Week**  
5 – 12 NOVEMBER 2016

[nzcupandshow.co.nz](http://nzcupandshow.co.nz)

<p><b>Sat 05</b></p> <p><b>Sothys New Zealand 2000 Guineas Day</b> Riccarton Park Racecourse</p>	<p><b>Tues 08</b></p> <p><b>Christchurch Casino New Zealand Trotting Cup Day</b> Addington Raceway</p>	<p><b>Tues 08</b></p> <p><b>Westfield Riccarton Style Stakes</b> Addington Raceway</p>
<p><b>Wed-Fri 09-11</b></p> <p><b>Canterbury A&amp;P Show</b> ASB Agricultural Park</p>	<p><b>Wed 09</b></p> <p><b>Coupland's Bakeries Mile</b> Riccarton Park Racecourse</p>	<p><b>Thur 10</b></p> <p><b>Christchurch Casino New Zealand Greyhound Cup</b> Addington Raceway</p>
<p><b>Fri 11</b></p> <p><b>Show Day Races</b> Addington Raceway</p>	<p><b>Sat 12</b></p> <p><b>Christchurch Casino NZ Cup and 1000 Guineas Day</b> Riccarton Park Racecourse</p>	<p><b>Sat 12</b></p> <p><b>Fashion in the Field</b> Riccarton Park Racecourse</p>

# Need help to find help?



## Canterbury Support Line

Call now >> **0800 777 846**

24 hours 7 days

## Useful contacts



### Christchurch City Council

ccc.govt.nz  
ccc.govt.nz/newsline  
03 941 8999  
0800 800 169  
info@ccc.govt.nz  
@ChristchurchCityCouncil  
@ChristchurchCC

### EQC

eqc.govt.nz  
0800 DAMAGE (0800 326 243)  
@EQCNZ

### SCIRT

strongerchristchurch.govt.nz  
03 941 8999  
info@scirt.co.nz  
@SCIRT\_info #chchtraffic

### Waimakariri District Council

waimakariri.govt.nz  
03 311 8900  
@WaimakaririDistrictCouncil  
@waimakariridc

### Environment Canterbury

ecan.govt.nz  
03 353 9007  
@EnvironmentCanterbury  
@ECan

### Selwyn District Council

selwyn.govt.nz  
03 347 2800  
03 318 8338  
admin@selwyn.govt.nz  
@SelwynDistrictCouncil  
@futureforSelwyn

### Earthquake Support

Coordination Service  
0800 777 846

### Canterbury Earthquake Temporary

Accommodation Service  
quakeaccommodation.govt.nz  
0800 673 227

### Residential Advisory Service

advisory.org.nz  
03 379 7027  
0800 777 299

### All Right?

allright.org.nz  
@allrightnz  
@allrightnz

### Canterbury Support Line

0800 777 846

Canterbury Earthquake Recovery Authority (CERA) came to an end on 18 April 2016. CERA's former functions transitioned to a number of new and/or existing agencies.

### Greater Christchurch Group (within Department of the Prime Minister and Cabinet)

dpmc.govt.nz/gcg  
infogcg@dpmc.govt.nz  
@GreaterChchRegeneration  
@GCGRegen

### Otākaro Limited

otakarold.co.nz  
03 357 6300  
info@otakarold.co.nz

### Land Information New Zealand (LINZ)

linz.govt.nz  
0800 665 463  
customersupport@linz.govt.nz

### Regenerate Christchurch

regeneratechristchurch.nz  
03 353 9600  
info@regeneratechristchurch.nz

### Ministry of Business, Innovation and Employment

mbie.govt.nz  
canterburyinfo@mbie.govt.nz  
@mbie.govt.nz  
@MBIEgovtNZ

### Ministry of Health/Canterbury District Health Board

cdhb.health.nz  
cph.co.nz  
health.govt.nz  
itsallhappening@cdhb.health.nz  
@CanterburyHealthSystem  
@CanterburyDHB

### Development Christchurch Limited

03 941 5992  
info@dcl.org.nz  
@Developmentchristchurchlimited

### Documents from the CERA website (cera.govt.nz) have been archived and can be accessed at:

ceraarchive.dpmc.govt.nz

### Earthquake case studies and learning summaries are available at the Recovery Learning website:

EQRecoverylearning.org

# What's on...

## World Bowls Championships

29 November – 11 December, 8.15am  
Burnside Bowling Club (HQ)

The pinnacle event of the bowling world, live in Christchurch. From \$15 per day



## SCAPE Public Art Season 2016

1 October – 12 November  
Arts Centre

Launching new works and showcasing an extensive catalogue of current major artworks. Various prices.



## CBD Stampede

2 October, 9am, Hagley Park North

An amazing 5km run through the CBD highlighting old and new. \$59



## Crater Rim Trail

16 October, 8am  
Hansen Park

A race up and around the crater rim of the picturesque Port Hills. From \$20



## Big Band Festival 10th Anniversary

21–24 October, various times, multiple venues

A selection of jazz big bands from around the country. FREE – \$70



## TEDxChristchurch

29 October  
10am – 6.30pm  
Isaac Theatre Royal

A feast for the mind, body and soul. From \$44–\$500



## Heath Franklin's Chopper – Live from Anzakistan

3 November, 7.30pm  
Isaac Theatre Royal

\$34



## SingularityU New Zealand Summit

14–16 November, day-long  
Horncastle Arena

World experts on exponential technology talk about the future. From \$295



## New Zealand Cup and Show Week

5–12 November, various times  
Riccarton Park, Addington Raceway, ASB Agricultural Park



## Live in the Park – Six60

19 November, 2.30pm  
Hagley Park North

From \$69



## South Island Wine and Food Festival

3 December  
11.30am  
Hagley Park North

An unforgettable day of wine and food, friends and fun. From \$34.90



## 70th Anniversary Santa Parade 2016

4 December, 2pm  
Riccarton Road

FREE



## Coca-Cola Christmas in the Park

26 November, 7.30pm  
Hagley Park North

One of the happiest and most magical, musical spectaculars on the Kiwi Christmas calendar! FREE

The events featured on this page are just a selection of what's happening in Christchurch over the next few weeks. Find out more online. ■

**Be There** >>>  
CHRISTCHURCH EVENTS

For more events visit:  
[bethere.co.nz](http://bethere.co.nz)