

# Future Christchurch Update

*The voice of the Canterbury rebuild*

JULY 2016

Moving ahead with the Convention Centre

Page 3

What's new in the Retail Precinct?

Pages 8-9

Christchurch City Council's Annual Plan – what does it mean for you?

Pages 10-11

The restored lecture theatre in Rutherford's Den: The original timber benches dating from 1877 were craned back in through the windows once earthquake repairs were complete.

## Historic Rutherford's Den to re-open

The Arts Centre will celebrate yet another milestone in its phenomenal restoration programme with the re-opening next month of the completely transformed Rutherford's Den.

Lord Ernest Rutherford, whose research earned him a Nobel Prize, studied at Canterbury College in the

1890s, when it was based at the Arts Centre site in central Christchurch.

Rooms he studied in at the Clock Tower building have been carefully restored and now house an interactive science museum.

Arts Centre Chief Executive André Lovatt says the beautiful heritage features have been retained but the space has been injected with a new energy by using state-of-the-art storytelling techniques that will appeal to people of all ages.

*Find out more about Rutherford's Den on page 5.*

**FUTURE  
CHRISTCHURCH**  
GREATER CANTERBURY

  
DEPARTMENT of the  
PRIME MINISTER and CABINET  
*Te Tari o Te Pirimia me Te Komiti Matua*  
GREATER CHRISTCHURCH GROUP

**Christchurch**  
City Council 



# Inside:

- 3 Progress for regeneration partners
- 4 Christchurch City Council facilities making progress
- 5 Rutherford's Den re-opening at the Arts Centre
- 6 Justice and Emergency Services Precinct
- 7 Ōtākaro Limited
- 8-9 What's happening in the Retail Precinct
- 10-11 Christchurch City Council Annual Plan
- 12 SCIRT
- 13 Housing NZ & Selwyn District Council
- 14 Environment Canterbury & EQC
- 15 Useful contacts



### Publishing details

This publication is jointly produced by Christchurch City Council and Greater Christchurch Group.

For editorial queries: editor@futurechristchurchupdate.co.nz

For delivery queries: delivery@futurechristchurchupdate.co.nz

ISSN 2422-8664

This work is licensed under the Creative Commons Attribution 3.0 New Zealand licence.

This publication is produced in a way that allows for maximum recovery and recycling of materials, significantly reducing energy use, air and water emissions.



## CHRISTCHURCH CITY COUNCIL

**Karleen Edwards**  
Christchurch City Council Chief Executive Officer

This is election year for local government and with it comes your opportunity to have a say on who represents your community for the next three years. Our city's ward boundaries are changing in the October Local Body Elections and this will directly affect who makes decisions on what happens in your community.

Council is all about bringing in the perspective of our citizens. Having worked closely with our elected members in my capacity as Chief Executive of this Council and understanding the significant rebuild challenges we have, and will continue to face in our post-earthquake environment, my experience is that Councillors and Community Board members take their role very seriously and want to make real, tangible differences for their community.

If you love Christchurch and want to shape the city's future, now is the

time to consider running in October's elections. More information on the forthcoming elections and the enrolment process can be found on the Council website: [ccc.govt.nz](http://ccc.govt.nz) Equally important is to ensure you and your family members (over 18 years) are enrolled to vote. Disappointingly, an estimated 35,000 eligible voters are not yet enrolled to vote in Christchurch. We need to get excited about the elections and encourage as many people as possible to contribute to the future of our city. Enrolling to vote means you can have a say on the people who will make decisions about what happens in your community over the next three years.

This year, voting in the local elections will take place by postal vote from 16 September to 8 October 2016. Only those correctly enrolled by 12 August will receive their postal voting papers in the mail. I hope you will get involved and take this opportunity to directly impact future decisions about many of our city's

services and events, particularly in this critical time of rebuild and regeneration.

Elections aside, this month we celebrate our 25th anniversary of KidsFest. School holidays are upon us and we have more than 270 events available to keep kids of all ages entertained over the break. As part of the anniversary festivities, we are hosting a special exhibition at our Civic Offices that celebrates 25 years of KidsFest. All Grown Up will showcase a wonderful display of photos, videos and paraphernalia from KidsFest events gone by. The exhibition will run from Monday 11 – Friday 15 July, and Monday 18 – Friday 22 July, from 9.30am – 4pm. More information is available online at [kidsfest.co.nz](http://kidsfest.co.nz)

I hope you enjoy reading this issue and I look forward to updating you on Council news and events next month.



## ŌTĀKARO LIMITED

**Albert Brantley**  
Ōtākaro Limited Chief Executive

Ōtākaro Limited's team of around 90 staff is now into the work of delivering anchor projects, and managing the potential sale of surplus Crown land in the central city, in a way that helps to drive Christchurch's regeneration. I've run a lot of big projects from the Canadian Arctic to South America and my view has always been that it's when people actually see things happening that they begin to have confidence. Our focus at Ōtākaro has to be on delivering, not promotion. We believe that's what will build credibility and earn trust. When we have people wanting to tell our story for us, that's when we know we've succeeded.

*Ōtākaro Limited is a Crown-owned company delivering key anchor projects and precincts, and managing any potential future sale of Crown-owned land, in the central city.*

So here's what you should be on the look-out for. Te Papa Ōtākaro/Avon River Precinct is really starting to take shape. I was proud to recently be part of the celebrations to mark the opening of the first stage of The Terraces on Oxford Terrace (read more on page 7), and you'll see more public spaces and art added over the next 18 months.

Work preparing the Convention Centre Precinct site for building will also begin this month. The initial phase of work will see underground services rerouted and a section of Gloucester Street closed (read more opposite).

Work has begun on the South Frame's public spaces – a series of landscaped gardens, pavements and lanes that will run from the Innovation Precinct through to the Health Precinct. We have started work on the widening of Manchester Street, and there are also the new 8-metre slide and high towers at the Margaret Mahy Family Playground for those who love heights and enjoy a bit of a rush.

A real challenge with large projects like the Metro Sports Facility is there's a huge amount of work that has to be done, in terms of design, set-up and organisation, before any physical construction work gets underway. That all must be done well to get a high-quality result. ■

## Rebuild progress at a glance...

91%

of the way through the entire SCIRT work programme



The SCIRT programme will be completed in December 2016

Source: Stronger Christchurch Infrastructure Rebuild Team (SCIRT).

# New Regenerate Christchurch CEO connecting with community

Born and raised in Christchurch, Ivan Iafeta, the newly appointed Chief Executive of Regenerate Christchurch, has an enormous passion for working with – and making a difference for – local people.



Regenerate Christchurch's Ivan Iafeta is looking forward to working alongside the community to identify opportunities for Christchurch.

Mr Iafeta has over 15 years' senior leadership experience, working on a range of large-scale projects with a focus on positive social, cultural and economic outcomes for Christchurch people.

After being engaged in the emergency response to the September 2010 Canterbury earthquakes, Mr Iafeta was seconded to the Canterbury Earthquake Recovery Authority in early 2011. Working as part of the social response team, he was appointed General Manager, Residential Red Zone, to lead the organisation's approach across the residential red zones, where he focused on working alongside local community leaders within the most affected communities.

Mr Iafeta says one of the things that most attracted him to the role with Regenerate Christchurch was the opportunity to reconnect people and communities with the residential red zone areas, and to involve them in the regeneration phase.

"It's vitally important that everyone who has been affected by the earthquakes has the opportunity to be involved in the process, and in deciding how the areas that are

special to them will be used in the future," Ivan Iafeta says.

"I have five children and what we are doing now will determine what we are going to leave for them – and future generations. Like every parent, I want my family – and my children's children – to be really excited about what the future holds in Christchurch." ■

*Regenerate Christchurch is a joint Christchurch City Council–Crown entity established to lead regeneration activities across Christchurch, with a focus on the central city, Christchurch's residential red zone and New Brighton.*

## Convention Centre tracking for 2019

The successful completion of early design and master planning stages has work on track for Christchurch's new Convention Centre to be complete in late 2019.

Work is due to begin this month on preparing the central Christchurch site for construction, including the rerouting of underground services and the closure of the section of Gloucester Street between Colombo Street and Oxford Terrace. Indicative designs for the centre

*"There is now a clear goal in sight to complete that design and build the centre."*

Albert Brantley  
Ōtākaro Limited Chief Executive

have been released following the master planning work done by the Government with development consortium Plenary Conventions New Zealand (PCNZ).

Crown-owned company Ōtākaro Limited has now taken the lead in the work that lies ahead, and it will select suitable contractors to work through the next stages.

"A lot of work has already been done in the purchase and clearing of land, and in design and planning, but there is now a clear goal in sight to complete that design and build the centre," says Ōtākaro Limited Chief Executive Albert Brantley.

"We are developing a world-class Convention Centre Precinct that will incorporate accommodation, retail and hospitality. With its 1,400-delegate plenary capacity, the Christchurch Convention Centre will complement the larger 3,500-delegate facility in Auckland, and the proposed smaller facility in Queenstown, and will attract events and visitors to the city and New Zealand."

Ōtākaro Limited will also work with parties interested in opportunities to develop the space in the wider Precinct, around the Convention Centre.

Minister supporting Greater Christchurch Regeneration Gerry Brownlee says it was agreed between the Government and PCNZ that the relationship would not continue into the next stages of the Precinct, but PCNZ's quality input into the progress to date was appreciated.

Funding has been committed for the Convention Centre Precinct, but Mr Brownlee says figures won't be discussed at this stage in order to get the best possible deal with contractors.

For more information, go to: [otakarold.co.nz](http://otakarold.co.nz) ■





## First look at your new QEII

The community has had its first look at the planned shiny new QEII Recreation and Sport Centre.

Construction is set to begin in October, and the grand opening is planned for 2018.

Warren and Mahoney have done the initial concept design for the new centre, which will be located in the heart of QEII Park. The facility will be 4,737 square metres and feature leisure pools, a lazy river, a lap pool, a water adventure playground, a spa pool, toddlers' and learn-to-swim pools, a hydroslide, steam rooms and saunas, as well as a fitness centre and café. Ample parking is also provided for cars and cycles.

In other major news for the area, last month Christchurch City Council approved the sale of 11.5 hectares of QEII Park to the Ministry of Education for the relocation of Avonside Girls' and Shirley Boys' High Schools.

"Everything's starting to come together all at once, which is very nice to see," says Burwood-Pegasus Councillor David East.

"QEII Park will be buzzing with activity again, just like it was pre-quake, and as a community hub it will return a much-needed focal point to northeast Christchurch."



## Team appointed to design Nga Puna Wai sports hub

Planning for the new Nga Puna Wai sports hub has taken a major step forward with the appointment of a multidisciplinary design team.

Christchurch City Council has contracted a consortium including AECOM, Beca, Studio106 Architect and a number of other critical specialists to begin concept design work for the sports hub. The multi-million-dollar project will combine facilities for a number of sporting codes, including an international-standard athletics track, two artificial hockey turfs, 12 outdoor tennis courts, two outdoor rugby league fields with covered seating and general-purpose grass sports pitches.

"The wider sporting community has been clamouring for a sports hub for a long time," says David Bailey,

the Council's Acting Head of Recreation and Sports.

"It's a shared vision – the Council is collaborating with Sport New Zealand, Sport Canterbury, Athletics Canterbury, Canterbury Hockey, Tennis Canterbury, Canterbury Rugby League and other stakeholders. The contractors we've appointed are world class and will be working to international best practice to make the shared vision a reality."

For more information, visit: [ccc.govt.nz](http://ccc.govt.nz)

## Unrepaired earthquake damage a challenge for valuers

"It's important Christchurch home valuations are as accurate as possible as they are the basis for rates, which are basically a tax on property," says Christchurch City Council's General Manager Finance and Commercial, Peter Gudsell.

"The revaluation does not affect the total amount of rates we collect, but it does affect how much of the total each property pays."

Quotable Value (QV) carries out the work, before the Valuer General audits it. Ratepayers will get letters with their new rating values (RV) in early December and have until 31 January 2017 to object if they are not satisfied with the value.

Identifying earthquake damage is a significant challenge for QV this year, as the 2013 legislation that excluded this damage from rating values has expired.

"While most Christchurch properties are no longer damaged and will be valued in the normal way, we want to identify those still unrepaired so we can assess the market value of the damaged property," says Gail Smits, QV's National Revaluation Manager.

"There's lots of market evidence for 'as-is-where-is' sales, so we have a good idea of what seriously damaged properties are worth.

"However, we don't have access to



insurance data, so it's hard to identify damaged properties if they haven't been sold."

Earthquake damage, especially to foundations, is not always easy to spot in roadside inspections. Because of this, property owners are encouraged to report significant unrepaired damage to QV by 30 September.

"We don't need to know about minor or cosmetic damage," says Gail Smits, "but we would like to know about unrepaired damage that could

affect a property's sale price."

"We would like people to let QV know so they don't end up paying more rates than they may need to," adds Peter Gudsell.

To find out more, visit: [ccc.govt.nz/revaluation](http://ccc.govt.nz/revaluation), report damage on QV's website [ratingvalues.co.nz](http://ratingvalues.co.nz) or call QV on 0800 786 822.

## Modern technology tells Rutherford's story

It's more than 100 years since Lord Ernest Rutherford started his scientific career in Christchurch but it's cutting-edge technology that's being used to tell his story.

Next month, the completely transformed Rutherford's Den re-opens its doors at the Arts Centre, treating visitors to hands-on digital displays as they learn about Rutherford and his peers.

Widely regarded as one of the world's most influential scientists, Lord Rutherford is the moustached man on the \$100 note. He discovered what the inside of an atom looks like, found out about radioactivity, discovered and named alpha and beta particles, and was the first scientist to change one element into another. In 1908 he was awarded the Nobel Prize in Chemistry.

Rutherford's Den was popular with schools, locals and tourists before the earthquakes and its closure was treated as an opportunity to completely transform the space, says Arts Centre Chief Executive André Lovatt.

"We've carefully kept the beautiful heritage features but have injected the space with new energy by using state-of-the-art storytelling techniques that will appeal to people of all ages.

"You can literally step inside an exhibition that illustrates what atoms are, or use your own movements to learn about renewable energy sources. In the actual space where Rutherford conducted his research on radio waves, there's a projection of him that includes original voice recordings - making you feel as though you're in the same room as him.



Hands-on activities make up part of the Rutherford's Den education programme set to run from new learning spaces at the Arts Centre from next month.

"So much of what Rutherford discovered led to the technology we enjoy today and we want visitors to learn about this in fun and exciting ways."

The effort that went into retaining heritage features is possibly best summed up in the upstairs lecture theatre, he says.

"The original timber benches that date from 1877 were removed after the earthquakes, stored on site and then craned back through the windows. They are in the exact position they came from and still have their original graffiti. The

digital blackboard at the front of the room is really the only clue that it's been completely strengthened and refurbished."

The Arts Centre is an independent charitable trust that relies on gifts and sponsorship to fund its restoration.

Rutherford's Den re-opens in August. Admission charges apply. Visit [rutherfordsden.org.nz](http://rutherfordsden.org.nz) for more information.

## Science education returns to the Den

From next month, the popular Rutherford's Den education programme will once again be taught on site at the Arts Centre.

The curriculum-linked education programme became mobile following the earthquakes, with two educators taking sessions at schools around Canterbury.

The post-earthquake outreach programme proved so popular that Wednesday sessions will continue until the end of 2016.

From August, sessions will once again be taught from Rutherford's Den on Worcester Boulevard, giving students the chance to experience the new spaces while they learn.

This new outreach programme focuses on famous New Zealanders, including Ernest Rutherford, and will be taught by former Den teacher Claire Norton.

"We're very grateful to the Rātā Foundation for funding this additional programme so that schools located too far away to make a trip into the city can still experience the sessions," Claire Norton says.

Bookings for the education programme, including the Wednesday sessions, can be made at: [rutherfordsden.org.nz](http://rutherfordsden.org.nz)

## Great Hall public open days attract thousands



More than 10,000 people visited the Great Hall in late June when it opened its doors to the public for the first time since the earthquakes, over two special open days.

The successful event came hot on the heels of the Great Hall's restoration winning the Christchurch Heritage Trust Supreme Award for its sensitive seismic strengthening work and attention to detail.

Both the Great Hall and neighbouring Rutherford's Den lecture theatre can be hired privately.

Work is progressing well on a number of the Arts Centre's 23 historic buildings. More than half of the site is expected to progressively re-open to the public during 2016.

Meanwhile, two new food vendors, Zen Sushi and Dumplings and Curator's Deli, are setting up at the Registry building on Montreal Street next to Canterbury

Cheesemongers. Then in spring Christchurch's i-SITE Visitor Information Centre and a new café called Bunsen will open in Boys' High and the Clock Tower respectively.

For more information, visit: [artscentre.org.nz](http://artscentre.org.nz)





This staggering 'crane's eye view' shows the sheer size of the Emergency Services Building (foreground) and the three components of the Justice Building as it takes shape.

## Justice and Emergency Services Precinct celebrates two years of construction

This month marks two years since work on the construction of the Christchurch Justice and Emergency Services Precinct by Fletcher Construction began. In a year's time, the Precinct will be up and running – and accommodating an estimated 2,000 staff and visitors a day.

With construction well underway, the focus is on planning how the complex will function day to day, catering for the diverse needs of both the visiting public and agencies housed there.

The Precinct's three buildings take up the lion's share of the block bordered by Lichfield, Durham and Tuam streets, with over 42,000 square metres of floor space. The Justice Building is the largest structure, made up of three five-storey 'towers' – each one is currently an individually managed construction project. The Emergency Services Building (stretching from Lichfield to Tuam Street) will house New Zealand Police, New Zealand Fire Service, Department of Corrections, St John, and the three arms of Civil Defence: the Ministry of Civil Defence and Emergency Management, and the Civil Defence and Emergency Management functions of Christchurch City Council and Environment Canterbury. Behind it is a car park for operational vehicles.

While the Precinct is clearly a hive of construction activity, it's harder to see some of the progress from the outside. Furthest advanced is the Tuam Street wing of the Justice Building, with bathrooms being tiled, most internal walls in place, gib-stopping underway and lifts being installed. Across the whole Precinct, the major steel structures are complete, work to make the buildings watertight is well underway, and almost all of the 12,000 square metres of glass panes are installed.

The \$300 million Precinct, a Christchurch Central Recovery Plan anchor project, is being delivered by the Ministry of Justice.

### A whole new way of working

The Ministry of Justice will operate 19 multi-jurisdictional courtrooms in the Precinct, all designed to be used flexibly according to demand.



Police, the Ministry of Justice and Corrections will share a joint custodial facility. This design innovation should reduce the time defendants spend in custody. Police holding cells on-site, and audio visual linking technology between the cells and courtrooms, mean defendants can be processed for bail more quickly, reducing the need for transportation and overnight stays.

The Precinct will also better support Christchurch-based victims of crime. Currently, victims interact with justice agencies largely on an individual basis. The Precinct enables improvements in communication, information sharing, and identification of victims at risk.

In the Emergency Services Building, Police, Fire, St John and Civil Defence services will be housed together for the first time. This allows for the establishment of a shared Emergency Operations Centre.

A flagship initiative, the centre is a New Zealand first and it will provide a dedicated operational control centre for emergency services to manage local, regional and national incidents.

The centre will be further supported by co-locating the St John Clinical Control Centre with the Police and Fire 111 Southern Communications Centre, with a shared intelligence centre. This will improve situational awareness across all emergency services agencies operating from the Precinct, and enable better-coordinated operational decision-making by emergency services during emergency events and significant community occasions, such as international sporting fixtures. A single point of communication and integrated messaging (including social media) will result in improved public communication.

With the aim of the Precinct being fully occupied by mid 2017, a planning focus is on moving agencies in managed stages to cope with the volume of staff and resources involved. At peak, approximately 1,100 staff are expected to work in the Precinct daily.

For more information, go to the Christchurch Justice and Emergency Services Precinct Facebook page. ■

### To date, the project has required:

- 3,500 tonnes of structural steel
- 12,000 square metres of glass
- More than 9,500 cubic metres of cement (foundation slab)
- 50 lead rubber bearings and 83 sliders (base isolation system)

## Future-proofing the Canterbury Earthquake Memorial

If you take a look from the Montreal Street bridge, you can see the Canterbury Earthquake National Memorial starting to take shape on the banks of the Ōtākaro/Avon River.

Piling for the foundations is complete and the marble is on its way from Italy to be ready for inscription and installation later this year. Currently the site is excavated lower than its finished level. The works offer a good opportunity to look at the thinking that has gone into the design to allow the Memorial to cope with high river levels and floods.

The Memorial is being constructed to accommodate natural events like earthquakes and floods rather than trying to conquer them. The design follows the flow of the river and does not interrupt it. With the excavation into the river bank, space has been created to allow more water to pass during flood events.

The stepped design also allows the Memorial to be used at different water levels. During significant rainfall, when many other sections of the river's banks will be covered in water, the names of those who died in the February 2011 earthquake will still be above water level.

Flooding will not damage the Memorial as it will be made out of durable materials, including waterproof lighting. There will also be isolated power points and taps down on the lower level so it can be easily cleaned once water levels have dropped following a flood.

"High waters and flooding do not harm the Memorial but increase its meaning and value. There are things



Work in progress: Piling is complete on the Earthquake Memorial and work has started on the reinforced concrete beams that will tie the piles into the main structure.

that we do not have under control and some we will never have. The Canterbury Earthquake Memorial tries to acknowledge this," says designer Grega Vezjak.

The river also serves as a symbol of the flowing of time and life itself,

which are integral elements of the Canterbury Earthquake Memorial. It incorporates the request from families of those who lost loved ones for it to be near water, to include greenery and to be a quiet, peaceful and beautiful space where we all can remember and reflect. ■

## First stage of The Terraces celebrated

Progress with Christchurch's new urban waterfront was recently marked with the official opening of the first stage of The Terraces by Prime Minister John Key.



Prime Minister John Key views Ngā Whāriki Manaaki (woven mats of welcome built from stone) with Ngāi Tahu's Morehu Flutey-Henare (foreground) and Reihana Parata.

The first stage, from Cashel Street to Hereford Street, is one of many features that make up Te Papa Ōtākaro/Avon River Precinct, an anchor project being delivered by the new Crown-company Ōtākaro Limited.

Representatives of Ngāi Tahu joined the Christchurch Mayor Lianne Dalziel, Councillors and other dignitaries to celebrate the milestone. The works of Ngāi Tahu and European authors are carved into stone panels throughout The Terraces.

By the time the project is completed (at the end of 2017), 50,000 square metres of paved shared space will form a lighted city promenade running along the Oxford Terrace side of the river from Christchurch Hospital to the Margaret Mahy Family Playground. It's an area where people can gather, play, shop and dine, and where central city business can flourish.

The Cambridge Terrace side of the river will be a green space, with walking and cycling paths alongside the river.

Ōtākaro Chief Executive Albert Brantley says, "The Terraces is

an example of how the city's regeneration objectives can go hand-in-hand with good commercial outcomes. People will be drawn to this waterside location and the options nearby. They can get close to the river, go for a walk to the playground, then enjoy a meal or a drink in one of the central city's bars or eateries."

The promenade also incorporates Ngā Whāriki Manaaki (stone weaving patterns). Three of 13 panels have now been completed. The concept of these weaving designs is to depict the protocols of welcome on the marae.

Work on stage two of The Terraces (Lichfield to Cashel streets, and Hereford to Worcester streets) will begin later this year. ■

### Contact details:

- otakarold.co.nz
- 03 357 6300
- info@otakarold.co.nz



*Ōtākaro Limited is a Crown-owned company delivering key anchor projects and precincts, and managing any potential future sale of Crown-owned land, in the central city.*





The stylish ANZ Centre will offer new retail brands for Christchurch.

## A taste of something different for the Retail Precinct

Christchurch's central city shopping landscape is being reinvented with an entirely new mix of retailers set to call it home.

Construction sights and sounds tell the story of a Retail Precinct that's taking shape daily. But the question remains over whether the new central city can compete with suburban malls and offer the variety, point of difference and vibrancy it will need to succeed.

So far, the signs are good.

Several major developments, due to be completed by the end of this year or early 2017, are promising new shopping opportunities, including a number of flagship stores. The four-storey **ANZ Centre**, on the site of the former Triangle Centre, will be offering shopping firsts: Australian cosmetic brand Mecca Maxima will open its first New Zealand store, and high-end fashion and homeware retailer Superette its first South Island store. Other tenants include ANZ, Becca and a new Hallenstein Glasson concept store.

Across from the centre on Cashel Street, **The Crossing** will offer the South's first Topshop Topman branch along with boutique retail stores, hospitality and office space. Guthrey Holdings is developing its **126 Cashel Street** site, formerly the Guthrey Centre, into an upmarket four-storey retail, hospitality and apartment centre.

The **BNZ Centre** (22,500 square metres of floor space) is being constructed between Hereford Street and Cashel Mall by Nick Hunt, who calls himself an "accidental developer" following the earthquakes. Stage One (fronting Hereford Street) is complete and almost fully leased. Ground-floor retail space is home to retailers such as Christchurch independent bookshop Scorpio Books, Hachi Hachi, Burger Fuel and new Indian street food restaurant Mumbaiwala. Mr Hunt says retailers Michael Hill, Pandora, Spark and New Zealand fashion store Repertoire will occupy space in Stage Two, fronting Cashel Mall.

A 2013 report by leading Australian property consultants MacroPlan Dimasi indicated that to succeed the new central city needs to offer something different from the suburbs; something authentically Christchurch that is people-focused, well-designed and safe.

Retail New Zealand spokesman Greg Harford says retailing in Christchurch's central city has long had its challenges given the dominance of suburban malls, but they are excited about the Retail Precinct.

"As government and other employees move back into the CBD, we're confident that there will be good

demand for retail, and that the businesses moving in will have a strong future. It's great to see new brands planning to enter Christchurch for the first time."

However, he says parking is a real issue for central city retailers.

"We think it's important that planning recognises that most Christchurch shoppers choose to travel by car when they shop. We would like to see more car parking, and at a cheaper price."

**"It's great to see new brands planning to enter Christchurch for the first time."**

Greg Harford  
Retail New Zealand spokesman

The ANZ and Crossing developments will offer 570 and 630 car parks respectively. Christchurch City Council is due to begin work on the new **Lichfield Car Parking Building** this month.

John Suckling, Chairman of Re:START the Heart Trust, which runs the iconic Re:START Mall, is pleased that most of the retail core will be open soon.

"Re:START [Mall] was always a transitional project and it is a sign of progress that so many permanent structures are now coming along. We set it up to bring vibrancy and something unique to the central city and we've done that. Soon we will be able to hand that baton on to the re-emerging central city."

That will happen next year when the new retail space becomes available.

John Suckling says that it has been interesting seeing the changes in visitors to Re:START since it was opened on 29 October 2011.

"First it was locals and tourists supporting the venture when much of the CBD was red zoned. Then construction work picked up, bringing in a lot of those workers and now we are noticing more office workers as well. I'm very pleased we are still trading well."

He welcomes the ongoing private and government support for the Retail Precinct and central city.

"It is important. Citizens who are proud of their city tend to have a central city that is highly functional. I think we are now on the way to achieving that." ■

## Walking the talk in the central city

As well as investing significantly in anchor projects, the Government is backing the central city's recovery by bringing back hundreds of public servants to work there – a move that supports businesses and adds to overall activity.

The BNZ Centre is already housing government employees. The largely complete Stage One (120 Hereford Street) has been home to almost 400 government workers since February. Staff in three of its four levels are from eight government agencies, including Statistics New Zealand, NZ Transport Agency, Department of Internal Affairs, Te Puni Kōkiri and the Human Rights Commission.

The main BNZ Stage One tenant, Statistics New Zealand, has 240 staff there. General Manager Data Operations Kathy Connolly says staff, while comfortable in their previous premises, were behind the idea of moving as they wanted to support Christchurch.

"We all live here in Christchurch and Canterbury so generally the feeling of staff was very positive about the reason for coming into the central city."

The various government organisations are spread over three levels in an open plan arrangement. Each agency has its own desk space but shares eating, drinking, gathering and meeting spaces, which are purpose-built on all floors and flooded in natural light.

"All of the space is available to be used by everyone, which is a new model for government. By sharing space, we [various government agencies] are getting to know each other and are able to better tap into each other's skill sets," says Kathy Connolly.

**"This is the heart of where the rebuild is happening. The government workers are providing more foot-traffic and business for retailers, which is the whole idea."**

Jim Harland  
NZ Transport Agency Regional Director Southern

She says lessons learnt around sharing space, and balancing security obligations with public access needs, are being shared with other agencies such as the Ministry of Justice as it looks at new collaborative spaces in the Christchurch Justice and Emergency Services Precinct.

Kathy Connolly says staff were a bit nervous about parking in the central city and would love to see some more provided for office workers.

Transport Agency Regional Director Southern Jim Harland says it's important as an agency to show leadership.

"This is the heart of where the rebuild is happening. The government workers are providing more foot-traffic and business for retailers, which is the whole idea.



NZ Transport Agency's Jim Harland and Jenny Dickinson enjoy one of the many purpose-built shared spaces at the BNZ Centre (Stage One).

"I enjoy being back in the city – you can see something is happening. You can look around and see how much has been done. When we were in our temporary premises in Avonhead, we had only the choice of walking through a residential area at lunchtime. Now there's so much more to see in the central city with new buildings and public spaces developing like our own BNZ Centre, which will connect Hereford and Cashel streets, like the Whitcoulls and Shades arcades used to. And the recently opened Terraces, along the Oxford Terrace riverbank, are

pedestrian and cycling friendly which is great to see."

The Transport Agency offered government staff at the BNZ Centre free bike locks and a free 30-day pass. The encouragement is working – Metro is proving popular with more than one in five of the Agency's 60-plus staff taking the bus each day. Even more are cycling – a dozen in winter and more in summer. ■

## The ball is just starting to roll...

Currently a site of furious construction activity, Stage Two of the BNZ Centre will be available for the next wave of tenants by early December. Accident Compensation Corporation will be a significant tenant, with approximately 200 staff occupying around 3,000 square metres of office space. Taking up a similar area, BNZ bank will be the main tenant. Attractive laneways and central public spaces will connect stages One and Two.



In addition, by March 2017 around 350 government workers are expected to be housed in part of a new Ngāi Tahu development being constructed on the former King Edward Barracks site (bounded by Cashel, Montreal and Hereford streets and Cambridge Terrace). About 550 government workers are set to occupy the new Grand Central Development at 161 Cashel Street (the site of the former Grand Chancellor Hotel) by the end of next year.

On top of these private developments, 1,100 government staff are expected to be working nearby in the Justice and Emergency Services Precinct when it is fully operational by mid 2017. Overall, another 2,200 government workers will be in central Christchurch in the next year or so, contributing to its regeneration alongside the private sector. ■



# Christchurch City Council Annual Plan

The Council has now agreed its Annual Plan for 2016–2017. It's timely to look back on what the Council has achieved for residents over the past year and look forward to future projects.

## Annual Plan

This financial year (2016–2017) we have seen a lower rates increase as promised, thanks to taking a closer look at the major works projects on our books. By reviewing what we commit to build, repair or maintain in the next year, we have kept the rates increase at 4.9 per cent but it will take longer to finish some projects.

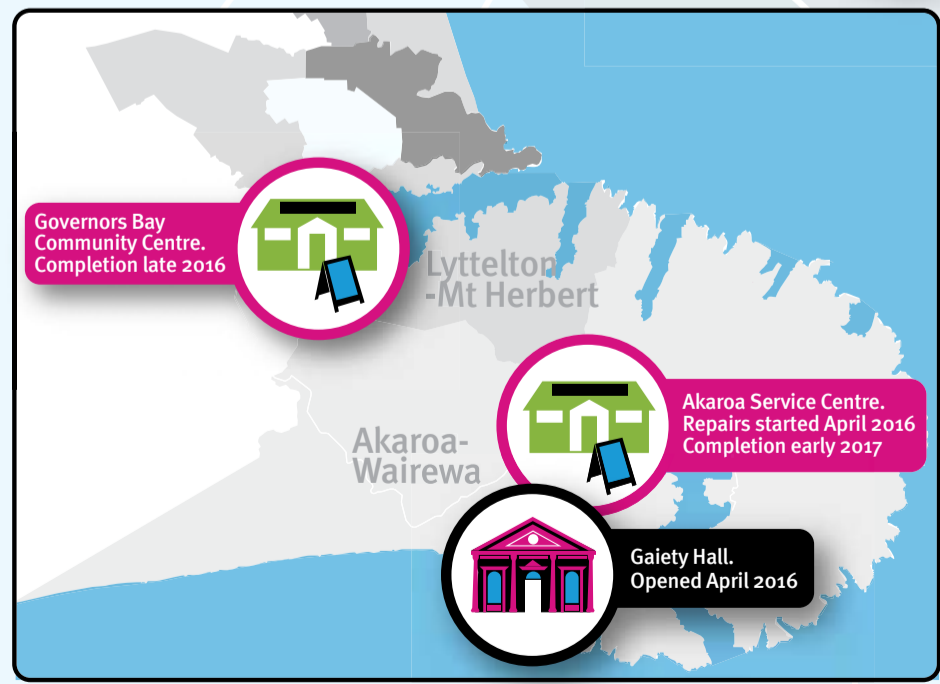
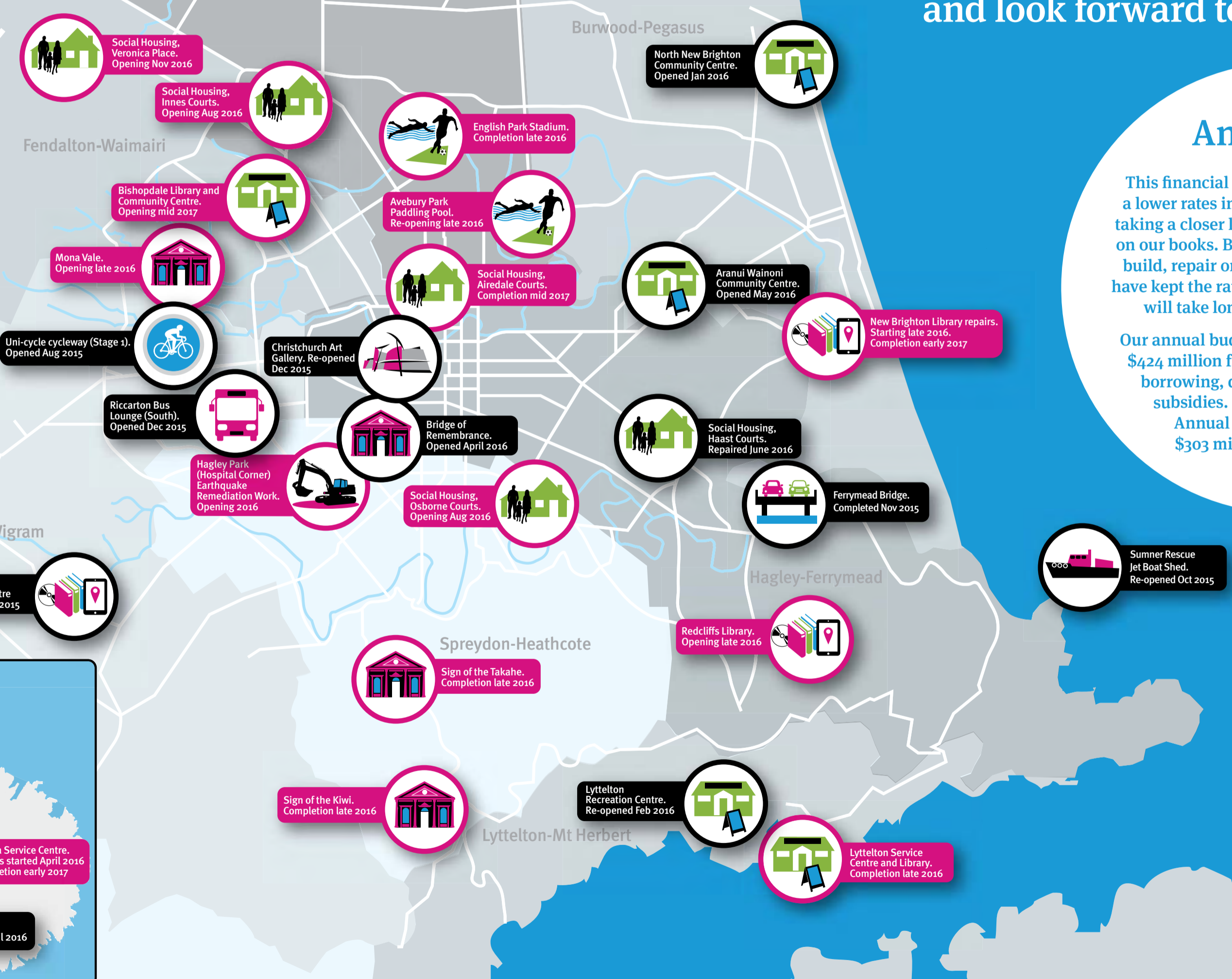
Our annual budget is \$1.06 billion. We receive \$424 million from rates; the balance is from borrowing, dividends, fees, charges and subsidies. Savings made through the Annual Plan will see us borrow \$303 million less than forecast.

### 2015–2016 completed projects

A priority for the Council has been repairing or rebuilding key infrastructure and facilities in the communities most affected by the earthquakes. The restoration of the Town Hall also got underway.

### 2016–2017 completed projects

This financial year, 2016–2017, will see a range of community facilities around the city and Banks Peninsula completed, as well as several of our treasured heritage buildings. Several other key projects will also get underway this financial year, such as the new Central Library, Sumner Library Community Centre and Museum, and Lichfield Car Parking Building.







About 80 per cent of SCIRT's repair and rebuilding work focuses on underground pipes.

## SCIRT marks significant milestones

Stronger Christchurch Infrastructure Rebuild Team (SCIRT) passed a big milestone this month. It is now 91 per cent of the way through its work programme.

Formed in late 2011 to repair Christchurch's earthquake-damaged underground pipe networks, roads and bridges, SCIRT is on track for construction to be completed on its five-year programme of repairs and rebuilding in December 2016.

SCIRT is not just about road repairs – far from it. In fact, road repairs are about one-fifth of all the work SCIRT has done.

The bulk of SCIRT's repair programme – about 80 per cent – is focused on the city's underground pipe networks. This work can't be easily seen and appreciated but is critical to a properly functioning city.

Of those pipe repairs, the vast majority has focused on the wastewater network.

The earthquakes cracked the walls of wastewater pipes and collapsed those of others, particularly older earthenware pipes. More than a third of the wastewater network has required some form of repair after the earthquakes.

So far, 562 kilometres of wastewater pipe have been repaired and replaced.

That's something like the distance between Christchurch and Invercargill – and it has about another 100 kilometres to go.

SCIRT Executive General Manager Ian Campbell says the massive repair programme is not just addressing earthquake damage but also designed to meet the needs of a changing and developing city.

"The city's earthquake-damaged wastewater, storm water and fresh water infrastructure has been repaired and rebuilt using new and modern technology that gives the city a robust network for the future."

In the fifth and final year of its \$2.2 billion horizontal infrastructure repair programme, co-funded by the New Zealand Government and Christchurch City Council, SCIRT is achieving several milestones.

### On the home straight

In May, SCIRT celebrated the completion of complex repairs to one of the city's biggest and busiest bridges, the Moorhouse Avenue Overbridge, five months ahead of schedule.

To date, SCIRT has repaired more than 120 bridges. There is only a handful of bridge repairs left to complete. These include two heritage bridges – Gloucester Street Bridge and Helmore Lane Bridge – and Durham Street Overbridge.

Crews are still busy, particularly in the east and south-east of Christchurch. Repairs of wastewater, storm water, fresh water networks, along with roads, are in full swing across many parts of the city. The majority will be completed by October.

Some projects will continue through until December. These include repairs of the wastewater network in Woolston, Mairehau, Heathcote, Mount Pleasant, Richmond, Avonside and Linwood. ■

Contact details:  
[www.scirt.co.nz](http://www.scirt.co.nz)  
 03 941 8999  
[info@scirt.co.nz](mailto:info@scirt.co.nz)



## SCIRT wins award for Memorial Arch

The team's work was honoured in June at the 2016 Canterbury Heritage Awards.

Stronger Christchurch Infrastructure Rebuild Team (SCIRT) was equal winner of the Public Realm – Saved and Restored Award for its \$6.7 million project restoring the iconic Christchurch war memorial, the Memorial Arch and the Bridge of Remembrance. That work was also highly commended in the Seismic Award.

SCIRT Executive General Manager Ian Campbell says, "Most of our work is fixing buried pipes and roads but every now and then we get to fix something special like this."

"We are very proud of the work of our designers and our Downer delivery team on this very technically challenging project."

SCIRT's work restoring the Armagh Street Bridge was highly commended in the Public Realm – Saved and Restored Award as well. ■



SCIRT workers lowering an 8.2-tonne beam into the Memorial Arch on the Bridge of Remembrance.

## Housing New Zealand to continue building new social housing

Although it has successfully completed its Canterbury Earthquake Recovery Programme (CERP), Housing New Zealand will push on with modernising its social housing stock in greater Christchurch.



Housing New Zealand, which has completed its successful Canterbury Earthquake Recovery Programme, will continue to build new social housing right across Christchurch.

The earthquakes damaged more than 5,700 state houses, leaving Housing New Zealand with the mammoth task of repairing 5,000 damaged properties and building up to 700 new homes.

With a budget in excess of \$300 million, the repair and rebuild of the region's social housing was a major contributor to the income being generated by the overall recovery of Christchurch and Canterbury.

**"We will continue to provide support for our tenants."**

Andrew Booker  
Acting CERP General Manager

Andrew Booker, who was Acting CERP General Manager, says this legacy isn't just one that has enabled tenants to be safe and warm for the foreseeable future – it has set a benchmark for state housing throughout the country.

"Social housing in Christchurch and Canterbury has a long and proud history. The earthquakes created an opportunity to build on that history."

There will be no return to 'business as usual' here, he says.

"We will continue to build new homes – our target is to deliver more than 100 new homes annually. And, of course, we will continue to provide support for our tenants."

Housing New Zealand's goal was always to return state-owned social housing in greater Christchurch to pre-quake levels. It has gone a step further, with approximately 20,000 tenants now living in better, safer, warmer homes than they were before the quakes struck.

That post-recovery work is continuing, with many new homes under construction right across the city.

"Although our earthquake recovery work has come to an end, Housing New Zealand's commitment to Christchurch will remain as strong as ever." ■

Contact details:  
[hnzc.co.nz](http://hnzc.co.nz)  
 0800 801 601  
[enquiries1@hnzc.co.nz](mailto:enquiries1@hnzc.co.nz)



## Selwyn Annual Plan adopted

Selwyn District Council has adopted its Annual Plan for 2016/17, which includes extra funding for new footpaths, funding for the development of a large-scale park and a change to how some rural water schemes are rated.

The average rates increase for 2016/17 is 4.1 per cent, incorporating a 3 per cent increase in the general rate. Rates increases will vary by property based on the services they receive and on property revaluations carried out in 2015.

As a result of submissions, the Council plans to increase the budget for footpath extension work so it can develop around 6 kilometres of new footpaths next year to add linkages to the existing footpath network.

The Council confirmed a funding plan for a new large-scale district park. Part of the park's cost will be funded from development contributions from new subdivisions, while most of the rest of the cost will be covered by a rate of \$20 a year per property. The park is located north of Rolleston and is expected to be developed from the 2020s onwards. A number of other local projects are planned over the next year.

A change affecting how Hororata Acheron, Malvern Hills and Te Pirita water schemes will be funded was also made, and these schemes will move to a more standardised water charge. ■



Selwyn District Council's footpath extension programme has received a funding boost in the Annual Plan 2016/17.

Contact details:  
[selwyn.govt.nz](http://selwyn.govt.nz)  
 03 347 2800 or 03 318 8338



## New web page for earthquake-affected home owners

A new web page is available offering home owners plenty of information to help them with a rebuild or repair.

Ministry of Business, Innovation and Employment (MBIE) and Christchurch City Council (CCC) are among a range of different agencies taking on the recovery work previously led by Canterbury Earthquake Recovery Authority.

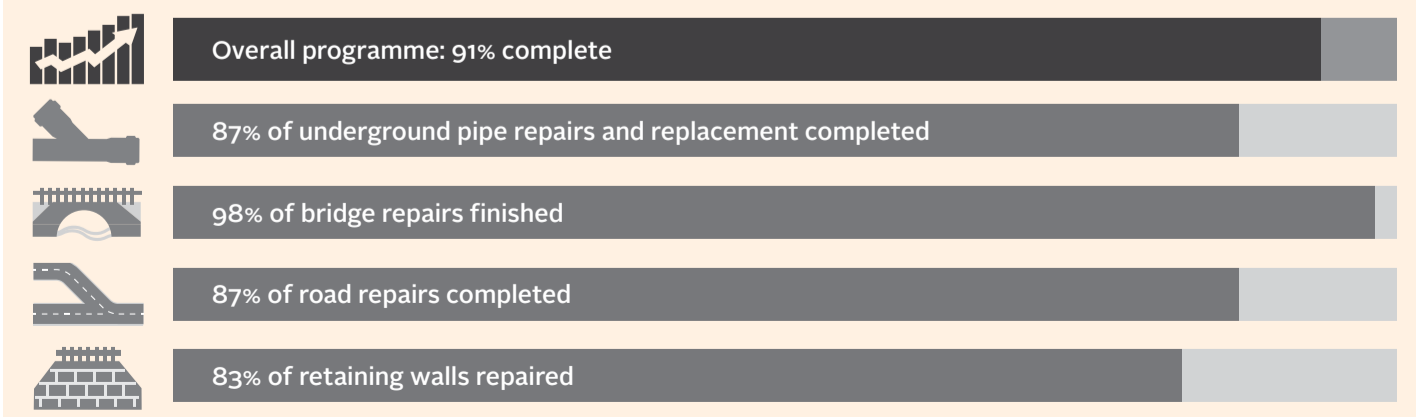
They recognised the importance of bringing together earthquake-related information for home owners in one place and teamed up to create the new Canterbury Residential Repair and Rebuild page, which is now live on the CCC website, under 'The Rebuild'.

Here you will find links to information about earthquake insurance claim settlements,

repairs and rebuilds (with many helpful links to MBIE publications), and advisory and support services available to home owners.

There are also links to seminars, and questions and answers about the repair and rebuild process, from the popular In the Know Hub that operated at Eastgate Mall last year.

Visit the page at [ccc.govt.nz/the-rebuild/canterbury-residential-repair-and-rebuild](http://ccc.govt.nz/the-rebuild/canterbury-residential-repair-and-rebuild) ■





## Environment Canterbury public transport update

### Bus patronage improving

Latest figures show bus passenger numbers in greater Christchurch are picking up, partly because more businesses are moving back into the central city.

Bus patronage is still lower than pre-earthquake; however, this drop is easing, with consistent increases monthly. In the year to date, patronage is down 2.5 per cent (on pre-earthquake levels), which is better than predicted.

Environment Canterbury staff are confident that, with more people heading back into town for work, the number of people catching

the bus will increase – as they themselves have shown.

A staff survey found 50 per cent of Environment Canterbury staff, including the Chief Executive, caught a bus to work at least once a week. Thirty-eight per cent biked and 48 per cent drove a car at least once a week. Many did a mixture of all three, with their choice depending on the day. ■



### Public transport fares

Environment Canterbury is urging people to use Metrocards to get the cheapest public transport fares possible.

On 4 July, the bus and ferry fares in Canterbury increased by an average of 2.5 per cent overall. The rise was originally proposed to be 10 per cent, but was cut back after community feedback.

Within the overall increase of 2.5 per cent, some fares have increased and some have decreased. There is a very small increase for those who pay with a Metrocard, while the increase is a lot higher for those who pay cash when boarding a bus.

An adult Metrocard fare within Christchurch increased by 5 cents, while that same route now costs an extra 50 cents if paying by cash. There was no increase for a child using a Metrocard while travelling within Christchurch, but if a child pays with cash it costs an additional 20 cents.

Using a Metrocard can save a passenger up to 30 per cent on their travel, as well as helping speed up boarding times, which improves bus travel time reliability.

In Waimakariri, Environment Canterbury has reduced the zones so all of the district now falls into zone two. This means, for everyone catching a bus from Christchurch to Rangiora, Woodend or Pegasus or in the other direction, or travelling within Waimakariri, the fare is cheaper.

For more information on the new fares, visit: [metroinfo.co.nz](http://metroinfo.co.nz) ■

#### Contact details:

🏠 [ecan.govt.nz](http://ecan.govt.nz)  
☎ 03 353 9007  
@ [info@ecan.govt.nz](mailto:info@ecan.govt.nz)



## Fulbright–EQC Award recipient to study seismic performance of high-rise walls

“It’s crucial we learn from the Canterbury earthquakes and improve building design and construction practice.”

These are the words of Alex Shegay, recipient of the 2016 Fulbright–EQC (Earthquake Commission) Graduate Award in Natural Disaster Research. The award, which is worth more than \$40,000, will support Mr Shegay’s research into why reinforced concrete walls fail, and how their performance can be improved.

The 24-year-old New Zealand student will soon be heading to the University of Washington in the United States to further this study.

Mr Shegay will research the seismic performance of high-rise structural

walls and use experimental data to create validated computer models. The research is part of his PhD in Structural/Earthquake engineering at the University of Auckland.

“Many concrete buildings in Christchurch that relied on reinforced concrete walls for seismic resistance were severely damaged in the 2010/2011 Canterbury earthquakes, to the point that it was fortunate to find them still standing,” he says.

“Part of the reason I wanted to pursue this project is because it will have a direct benefit to society and



Award recipient Alex Shegay wants to learn from the Canterbury earthquakes and improve building design and construction practice.

my findings will be filling gaps in the understanding of structural walls.

“Structural engineers have significant social responsibility to protect people even in the most devastating circumstances. The Canterbury earthquakes were an example of one such catastrophic event producing ground accelerations never before recorded in an urban environment.”

The Fulbright–EQC Graduate Award in Natural Disaster Research facilitates research on reducing and preventing natural disaster damage.

It is part of \$16 million granted by EQC each year to high-quality research that builds knowledge about New Zealand’s natural disasters. ■

#### Contact details:

🏠 [eqc.govt.nz](http://eqc.govt.nz)  
☎ 0800 DAMAGE or 0800 326 243



## Work begins on Redcliffs Library

The Redcliffs community recently gathered to celebrate work beginning on their new library. David Cox, Patron of Redcliffs Public Library, and local children marked the start of construction by turning the first sod.

Darren Moses, Manager Capital Delivery Community at Christchurch City Council, says “We’re looking forward to getting started on building a fantastic facility for this community and have worked closely with the Redcliffs Library Committee to progress plans for a replacement building.

“It has particular significance as the new voluntary library will be the home of the Redcliffs Public Library Inc., which has been running a library in the area for more than 100 years.”

The single-storey building, designed by Young Architects, includes a reception area, small meeting room, kitchenette and toilet. The front



of the building has a terrace area, seating, bike racks and planting.

Before the earthquakes, the group was operating out of a Christchurch City Council-owned building at 91 Main Road, but the building was badly damaged in the February 2011 earthquake and deemed uneconomic to repair.

The Committee has worked hard to raise funds for the new building and has received financial support from the Council, Protranz, the Christchurch Earthquake Appeal Trust, Vodafone and the Rātā Foundation, as well as from a number of members of the community.

Until the new building is completed, library services are being offered from the Redcliffs Tennis Club.

The new library is expected to open before the end of the year on the same site as the demolished, earthquake-damaged facility. ■

## Useful contacts



Christchurch City Council  
03 941 8999  
0800 800 169  
[info@ccc.govt.nz](mailto:info@ccc.govt.nz)  
[ccc.govt.nz](http://ccc.govt.nz)

EQC  
0800 DAMAGE  
0800 326 243  
[eqc.govt.nz](http://eqc.govt.nz)

SCIRT  
03 941 8999  
[info@scirt.co.nz](mailto:info@scirt.co.nz)  
[strongerchristchurch.govt.nz](http://strongerchristchurch.govt.nz)

Waimakariri District Council  
03 311 8900  
[waimakariri.govt.nz](http://waimakariri.govt.nz)

Environment Canterbury  
03 353 9007  
[ecan.govt.nz](http://ecan.govt.nz)

Selwyn District Council  
03 347 2800  
03 318 8338  
[selwyn.govt.nz](http://selwyn.govt.nz)

Canterbury Support Line  
0800 777 846

Earthquake Support Coordination Service  
0800 777 846

Canterbury Earthquake Temporary Accommodation Service  
0800 673 227  
[quakeaccommodation.govt.nz](http://quakeaccommodation.govt.nz)

Residential Advisory Service  
03 379 7027  
0800 777 299  
[advisory.org.nz](http://advisory.org.nz)

Canterbury Earthquake Recovery Authority (CERA) came to an end on 18 April 2016. CERA’s former functions transitioned to a number of new and/or existing agencies.

Greater Christchurch Group (within DPMC)  
[info@gcg@dpmc.govt.nz](mailto:info@gcg@dpmc.govt.nz)  
[dpmc.govt.nz/gcg](http://dpmc.govt.nz/gcg)

Ōtakaro Limited  
03 357 6300  
[info@otakaroltd.co.nz](mailto:info@otakaroltd.co.nz)  
[otakaroltd.co.nz](http://otakaroltd.co.nz)

Ministry of Business, Innovation and Employment  
[mbie.govt.nz](http://mbie.govt.nz)

Documents from the CERA website ([cera.govt.nz](http://cera.govt.nz)) have been archived and can be accessed at: [ceraarchive.dpmc.govt.nz](http://ceraarchive.dpmc.govt.nz)

Regenerate Christchurch  
03 353 9600  
[info@regeneratechristchurch.nz](mailto:info@regeneratechristchurch.nz)  
[regeneratechristchurch.nz](http://regeneratechristchurch.nz)

Land Information New Zealand (LINZ)  
0800 665 463  
[customersupport@linz.govt.nz](mailto:customersupport@linz.govt.nz)  
[linz.govt.nz](http://linz.govt.nz)

Ministry of Health/Canterbury District Health Board  
[health.govt.nz](http://health.govt.nz)  
[cdhb.govt.nz](http://cdhb.govt.nz)  
[cph.co.nz](http://cph.co.nz)



# What's on...

**Botanic D'Lights**  
3-7 August, 6pm-9pm  
Christchurch Botanic Gardens

A five-night winter spectacle of illuminated artworks and innovative light installations presented within the magnificent surrounds of the Christchurch Botanic Gardens. Gold coin donation.



**Pink Floyd Experience**  
23 July, 8pm  
Horncastle Arena

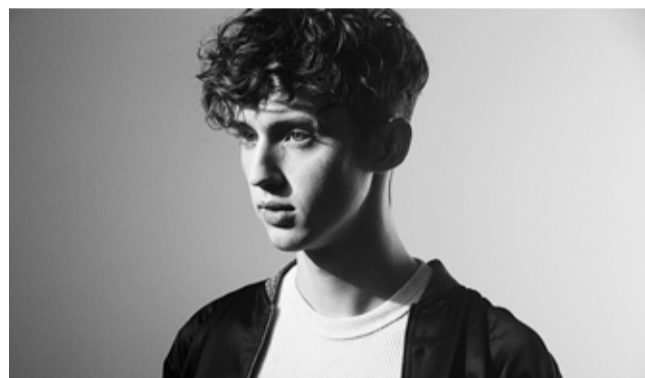
Featuring many of Pink Floyd's biggest hits.  
\$100.50



Free

**Alternative Radio: RDU95.5FM**  
18 March-14 August, 9am-4.30pm  
Canterbury Museum

An exhibition charting 40 years of the South Island's longest-running independent radio station and its role in the rise of New Zealand music in Christchurch. FREE



**Troye Sivan**  
28 July, 7pm  
Horncastle Arena

Online sensation Troye Sivan will be showcasing his light pop-soul sounds to NZ for the first time.  
\$49.90



**New Zealand Grand National Racing Carnival**  
6, 10, 13 August  
Riccarton Park Racecourse

Top-class racing featuring the spectacular jumpers. Plenty of non-racing activities. Various prices.



**Go Green Expo Christchurch**  
13-14 August, 10am-5pm  
Air Force Museum

New Zealand's largest organic, sustainability and green living expo.  
\$5



**WORD Christchurch Writers and Readers Festival**  
24-28 August, 6pm  
Isaac Theatre Royal

Five days of presentations and conversations with authors, journalists, historians, philosophers and more! Various prices.



**Macklemore & Ryan Lewis**  
30 July, 8pm  
Horncastle Arena

The Grammy-Award-winning superstars are bringing their show-stopping This Unruly. From \$71.40



**Lamb and Hayward Masterworks: Piers Lane Plays Rachmaninov**  
13 August, Airforce Museum

Australian pianist Piers Lane will join the CSO to perform Rachmaninov's Piano Concerto No 2. From \$35



**Tribute to the Rat Pack**  
3 August  
La Vida Centre

Adults from \$28

The events featured on this page are just a selection of what's happening in Christchurch over the next few weeks. Find out more online. ■

**Be There** >>>  
CHRISTCHURCH EVENTS

For more events visit:  
[bethere.co.nz](http://bethere.co.nz)