



Image: Bus Intelligence

Ideas to Reality

Building a 21st century city



CERA
Canterbury Earthquake
Recovery Authority
To Mana Haumanu ki Waitaha

C
Christchurch Central
Development Unit
Te Uepi Wokabato

Christchurch
City Council 





Knox Plaza, Victoria Street

Contents

Rārangi Upoko

Foreword: Building a 21st century city 4	A Prosperous City34	An Accessible City 64
	Retail Precinct.....36	Travel 66
Remembering the journey6	Convention Centre Precinct.....38	An Accessible City - access for all.....68
What we've been through 8	Private enterprise 40	
Where we are now 10		
The Blueprint comes to life 12	A Vibrant City 42	What progress looks like70
Hagley Oval..... 14	Performing Arts Precinct 44	What progress looks like 72
Earthquake Memorial 16	Central Library..... 46	
Bus Interchange 18	Metro Sports Facility 48	
Te Papa Ōtākaro/Avon River Precinct.....20	Stadium 50	
Justice and Emergency Services Precinct 22	Arts and Culture 52	
Innovation Precinct 24	Events..... 54	
Health Precinct/Te Papa Hauora 26	Hospitality 56	
	Private Residential Developments..... 58	
	Residential Demonstration Project..... 59	
	East Frame 60	
	South Frame 62	
A Green City28		Progress Timeline 74
Green spaces.....30		
Green buildings.....32		



Foreword

Building a 21st century city

Message from John Ombler, Acting Chief Executive, Canterbury Earthquake Recovery Authority

Following the series of earthquakes that started in September 2010 and caused widespread damage, the centre of Christchurch was left unrecognisable and in need of a plan to manage its recovery. This was a 'once only' opportunity: one chance to get it right, one chance to rebuild a city that would grow successfully into the future.

In June 2011 Christchurch City Council asked people to 'Share an Idea' about what they wanted for their new central city. From over 100,000 ideas, certain themes were identified and these became the strategic goals for the revival of the new city:



John Ombler, Acting Chief Executive, Canterbury Earthquake Recovery Authority (CERA)



A Green City



A Prosperous City



A Vibrant City



An Accessible City

The ideas and desires that formed these themes came from the people of Christchurch and they have been used to shape the central city's design and rebuild. Over an intense 100-day period, the Blueprint Plan was created by a professional consortium in conjunction with CERA's Christchurch Central Development Unit (CCDU) as part of the *Christchurch Central Recovery Plan*.

Share an Idea



Blueprint Plan for central city

The Blueprint Plan was created as a framework to help form a successful city. Over the last three years we have been working purposefully towards this vision. Much of the Crown development in the central city has only been able to take place in just the last two years. To date, over 40 per cent of the post-quake physical rebuild has already been completed and the halfway mark is rapidly approaching. Achieving this progress has been no mean feat – involving tenacity, hard work and a total commitment to the future of Christchurch.

By continuing to apply this very deliberate Blueprint design for the duration of the rebuild, we set a framework for the private sector to populate the central city and develop it alongside the key anchor projects, with the financial backing of the Government.

The Crown has supported the wishes of the people from the start. Rebuilding the largest city in the South Island, alongside local government, iwi, businesses, investors and community, has been a top priority that has long-term Government commitment.

I look forward to the exciting future we have ahead of us and I am also truly delighted with the progress of our city so far.

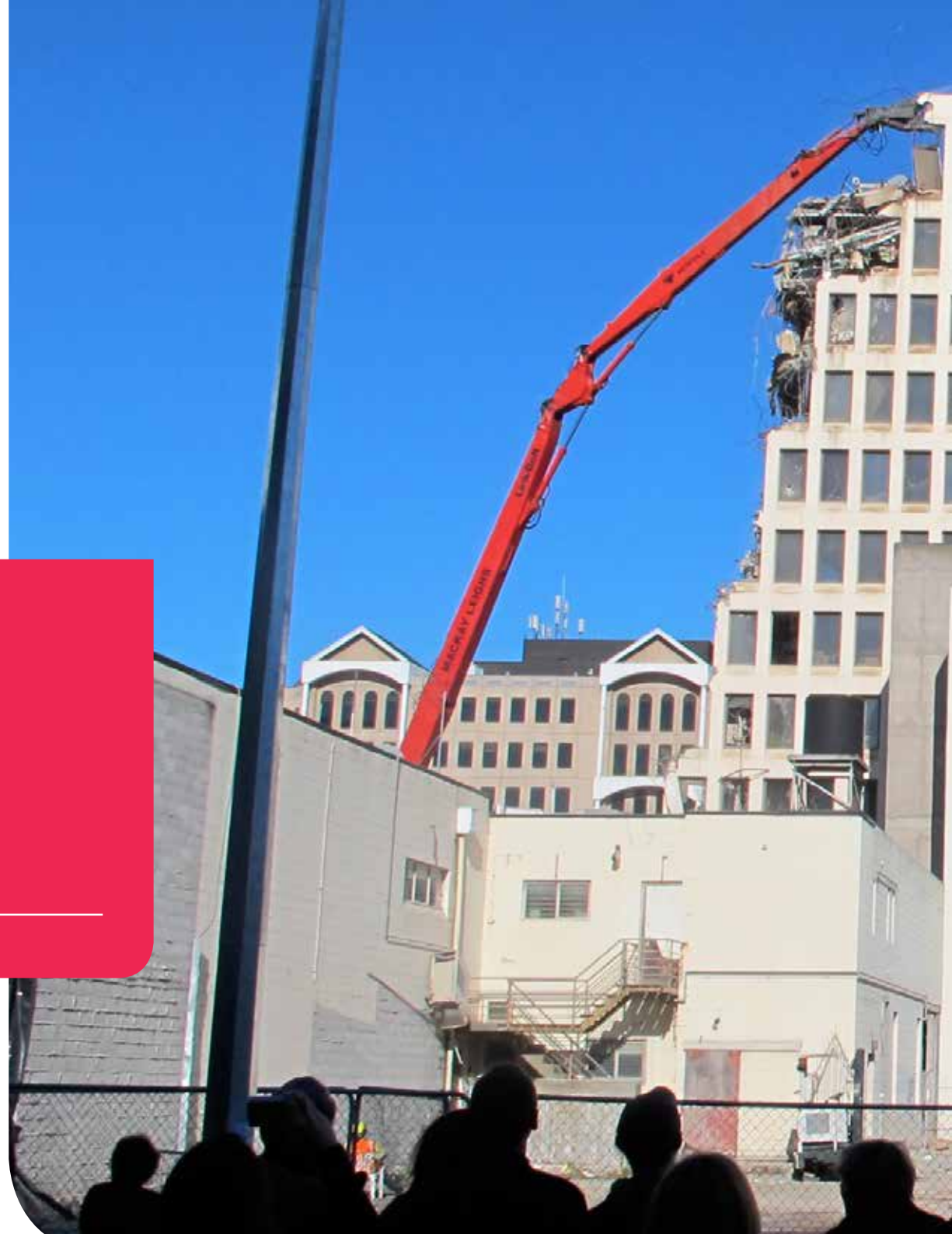


Dr Karleen Edwards, Chief Executive, Christchurch City Council

Message from Dr Karleen Edwards, Chief Executive, Christchurch City Council

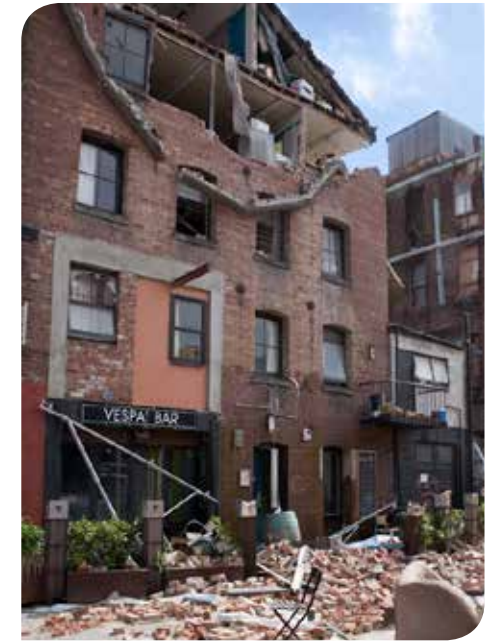
Christchurch City Council has been working hard to ensure the community is well served and supported as the Crown's role in the recovery changes. The Council will take the framework that the Crown has provided, and use it to ensure our city is built to the very best it can be for the future. This is a time of much change, and we at the Council look forward to taking the reins as we move forward.

Remembering
the journey





Residents watching demolition



Vespa Bar in Poplar Lane

What we've been through

Christchurch has been through a lot of change. After the quake of February 2011, it became clear that the city would never be the same again. The emotional impact has been significant and long lasting. However, it is the physical impact of the natural disaster that is seen on a daily basis.

The consequences of the Canterbury earthquake series were substantial with an unprecedented amount of remedial work needed before any rebuilding could take place. Damage to the infrastructure and the loss of buildings left the city – particularly the city centre – unrecognisable.

Damage overview

1,628,429 square metres
of road were damaged and needed to be repaired or replaced across large parts of greater Christchurch



659 kilometres
of sewer pipes and 69 kilometres of water mains were damaged



About 168,000 dwellings
in greater Christchurch (over 90%) had a dwelling claim

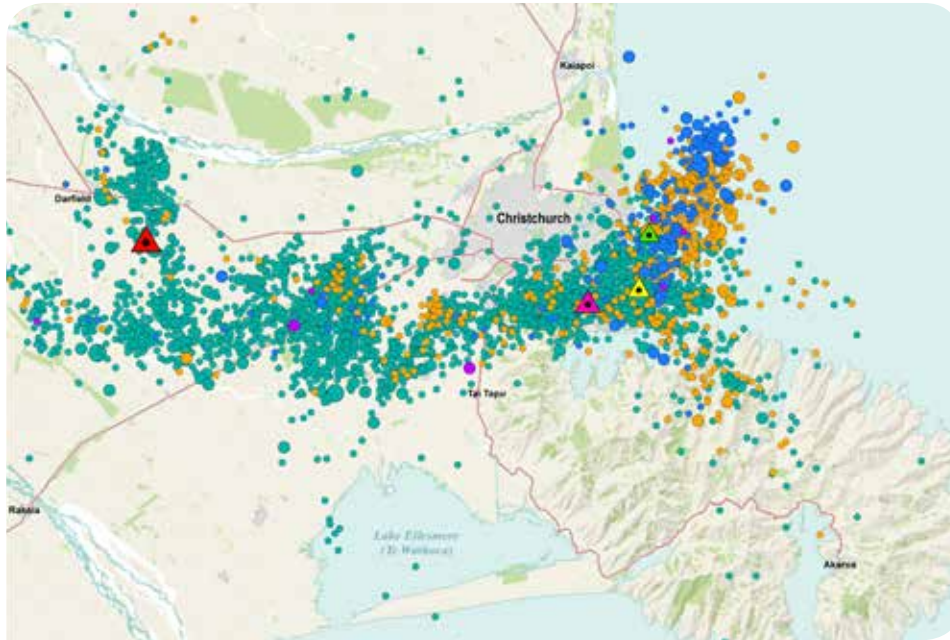


1,100 buildings
needed to be demolished in the city centre



Central Christchurch was changed permanently – not just physically, but economically as well. Between 2011 and 2012 the number of central city businesses plummeted from 5,689 to 3,758 and the number of employees dropped from 47,350 to 27,560. The economic geography of the central city was changed as many businesses were forced to move to the suburbs.

However, the biggest factor affecting the start of the greater Christchurch rebuild was that the ground was still shaking.



Map courtesy of North and South GIS

Legend – aftershocks map

Major Canterbury Earthquakes

- ▲ 7.1 on 4 September 2010
- ▲ 6.3 on 22 February 2011
- ▲ 6.0 on 13 June 2011
- ▲ 5.9 on 23 December 2011

Aftershocks September 2010 to December 2012

- Aftershocks September 2010 to June 2011
- Aftershocks July 2011 to December 2011
- Aftershocks January 2012 to June 2012
- Aftershocks July 2012 to December 2012

Magnitude Indicator

- 3.0 - 4.0
- 4.0 - 5.0
- 5.0 and greater

Earthquake Data Source: GeoNet, GNS. Original Map Scale: 1:320,000 on A4.

Greater Christchurch experienced over 11,000 aftershocks from February 2011 and they did not stop until mid 2012. Unsound and damaged buildings were still being demolished carefully during this period but it was neither safe nor sensible to start the actual rebuilding until the ground had stopped shaking. Insurance issues were also restricting the start of the construction, setting back progress every time there was a significant aftershock. However, planning and designing could continue at pace.

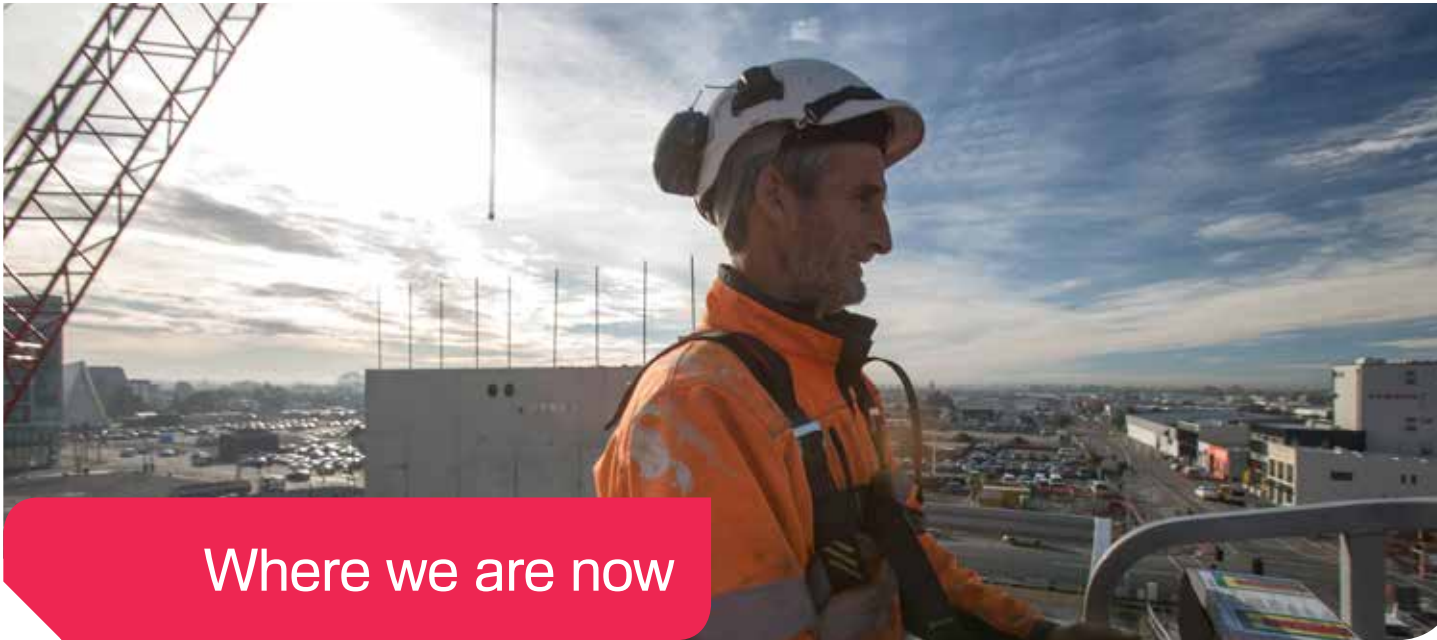
The Blueprint Plan was published in June 2012. Now, only three years later, it is exciting to see so many of these plans and ideas starting to come to life. Christchurch residents and visitors see the devastation and the frustrations of the

rebuild up close. From this perspective, it is often difficult to step back and take in the many positive changes that have happened since the Blueprint Plan's publication.

The guiding principles and the vision, created as part of the *Christchurch Central Recovery Plan*, were deliberately designed to form a solid framework to build the new Christchurch upon. It is these plans that will, in time, make Christchurch one of the most modern and carefully considered cities in the world.



Demolition in progress



Where we are now

Completed work

Waste water

404km of pipe (64%) repaired/replaced
57 pump stations (71%) repaired/replaced



Storm water

41km of pipe (51%) repaired/replaced
4 pump stations (51%) repaired/replaced



Fresh water

76km of pipe (84%) repaired/replaced
20 pump stations and reservoirs (87%) repaired/replaced



Roading

1,049,649 sqm of road (64%) repaired/replaced
122 bridges/culverts (81%) repaired/replaced
117 retaining walls (62%) repaired/replaced



97% of design is complete

74% of construction is complete

96% of central city work is complete

76% of the whole SCIRT programme is complete

The progress of the city's rebuild and regeneration to date has been nothing less than extraordinary. You cannot repair or replace 150 years of city infrastructure and construction in just three years and yet the statistics to the left on the work of the Stronger Christchurch Infrastructure Rebuild Team (SCIRT) indicate that Christchurch has come amazingly close to it.

Progress in general construction and commitment from private investment have also led to significant changes and noticeable growth.

Information above shown as at August 2015 from SCIRT



Fitzgerald Avenue road damage



Fitzgerald Avenue after repair



Novotel Hotel, The Square, Christchurch

Hotel rooms

The number of hotel rooms available in the city has increased to 884 in February 2015 from 53 in March 2011



Building consent valuations

The value of building consents has increased to \$153,411,670 in the first quarter of 2015 from just \$1,193,600 in the second quarter of 2011



Visitors

In February 2015, 98,638 visitors came to Christchurch, compared with just 15,278 in April 2011



Hospitality

About 760 cafés and restaurants now in Christchurch; nearly at pre-quake levels of 911 (June 2010)



The following pages celebrate the progress of the rebuild and regeneration of the city to date.



Hagley Oval during Cricket World Cup 2015



The Blueprint
comes to life





Hagley Oval

Papa Kirikiti



A Green City



A Vibrant City

Hagley Oval, the first of the anchor projects to be completed, has been a silver lining to emerge from the Canterbury earthquake sequences, which ruined Christchurch's international cricket ground, AMI Stadium. Redevelopment work began on the Oval on 17 December 2013 and, less than 12 months later, the pavilion at Hagley Oval was officially opened on Monday 15 September 2014.

Hagley Oval demonstrates what can be achieved by a bold vision, dedication and hard work. It is a celebration of Canterbury's

cricketing history as well as a salute to the future, providing an investment in sport and community for generations to come.

In a world of concrete 80,000-seat stadiums, Hagley Oval is in a league of its own. Grass embankments and white picket fences give it a traditional feel that is sure to stir the emotions.

The new Hagley Oval also boasts all the modern comforts of an international cricket stadium and was a standout venue during the 2015 ICC Cricket World Cup.

“It’s better than before, it’s coming alive.”

Male Resident 40-63



New Zealand v Sri Lanka, Boxing Day test match

The redeveloped Oval had its debut on Boxing Day 2014, with a test match between New Zealand and Sri Lanka. Attended by over 8,000 fans, it was the first international cricket match played in the city since the 2011 earthquake. When Hagley Oval hosted two warm-up matches and three pool matches during the ICC Cricket World Cup, players and spectators labelled it a “roaring success” and a “cracker venue” with its intimate village green atmosphere. Black Caps captain, Brendon McCullum, gave his nod of approval, praising the unique set-up of the Hagley Oval pitch. The response of the international players was equally approving.



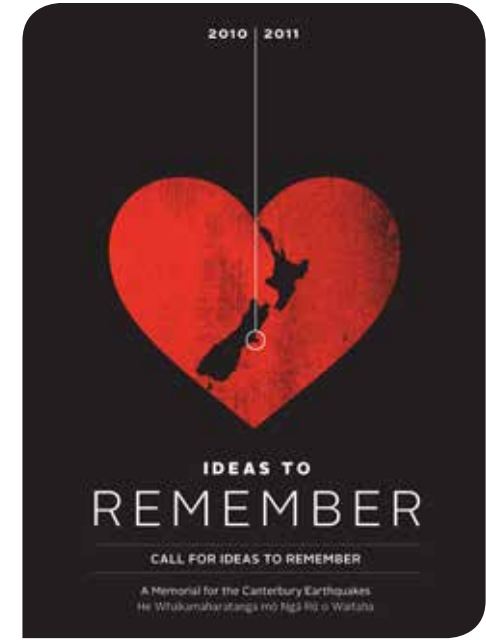
Cricket World Cup opening ceremony



Cricket World Cup 2015 – Sri Lanka v New Zealand



The Memorial Wall, designed by Grega Vezjak, an architect from Slovenia



The Call for Ideas to Remember



A Green City

The Canterbury Earthquake Memorial will provide a place to reflect on the events that changed Canterbury forever, paying respect to the 185 people who lost their lives on 22 February 2011. It will acknowledge the shared trauma and the huge support received with the recovery operation that followed.

How we choose to remember varies over time, and across cultures and individuals. It can also happen in all kinds of ways – sometimes as part of a formal civic function, and at other times as personal and informal reflection. The design of a memorial contributes to the act of remembering by providing for different interpretations and experiences. It might be a place you walk through, or simply sit in while reflecting.

The site for the Canterbury Earthquake Memorial is on a stretch of Ōtākaro/Avon River between Montreal Street and Rhododendron Island. This location was selected because it is easily accessible and can accommodate both one person seeking quiet reflection, and events with many people. Feedback from families of people who died in the February earthquake and those who were severely injured showed they wished for the Memorial to incorporate water and greenery. This location fits well with these wishes as it is on the banks of Ōtākaro/Avon River with many large, well-established trees.

The process to decide on a design for the Memorial began with the call for 'Ideas to Remember'. Anyone, anywhere in the world, could submit a design idea to create a meaningful memorial. More than 330 submissions from 37 countries were received.

The submissions were shortlisted to six by an evaluation panel made up of arts professionals, experts in architecture and landscape architecture, and a participant on behalf of the bereaved families. The evaluation panel was selected to provide a broad range of experience and expertise so that the chosen memorial design would be fitting and achieve the aspirations and objectives expressed by those affected by this tragedy.

The shortlisted designs were shared with bereaved families, the seriously injured and those who survived the major building collapses. Their feedback was a very important part of the development of the designs.

The people behind the six chosen designs were then invited to progress their ideas into developed designs using this feedback. They presented the final designs to the recovery leaders, key stakeholders, including first responder organisations of New Zealand, and the public.

Drawing on the feedback received on the final designs, the evaluation panel made a recommendation on its preferred design to the Memorial Leadership Group. This group is made up of the Associate Minister for Canterbury Earthquake Recovery, the Mayor of Christchurch, Kaiwhakahaere of Te Rūnanga o Ngāi Tahu and the Minister for Arts, Culture and Heritage.

On 13 May 2015, Minister for Canterbury Earthquake Recovery Hon Gerry Brownlee announced The Memorial Wall, by Grega Vezjak, as the selected design for the Canterbury Earthquake Memorial.

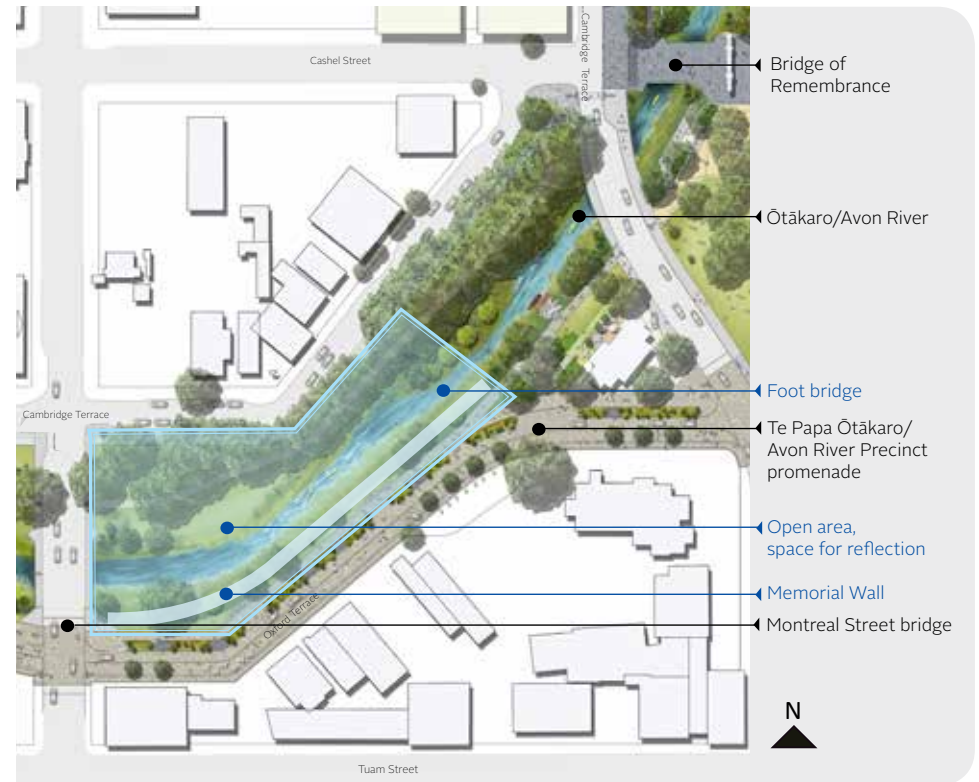
The evaluation panel recommended The Memorial Wall because it:

- *makes best use of the sun. Located on the southern bank of the river, it is not shaded by buildings or trees*
- *provides a journey, beginning with the Memorial space, and then over the bridge to the north bank where a simple space for sitting, reflecting, talking with each other and remembering will be created*
- *is safe and provides an excellent space for commemorative events*
- *provides a strong civic statement that is an evocative and powerful memorial*
- *is feasible to build within budget and does not create adverse flood risk.*

In essence, the design will be as seen in artist's impressions. However, as with all designs, it will evolve during the detailed design phase. In particular, the design team will consider:

- *the selection of trees*
- *the design of an additional, simple reflective space on the north bank*
- *the arrangement of the names of the people who lost their lives that day (a name will only be placed on The Memorial Wall with permission from their families.)*
- *how the first responders, survivors and seriously injured will be acknowledged*
- *how people can share their stories and experiences*
- *how to link The Memorial Wall to the sensitive sites around the city where lives were lost, including the CTV and PGC sites.*

The design selected is a major engineering project, as well as a beautiful landscape art work. Construction will take some time. The site will be ready for its official dedication on 22 February 2017.



The Memorial is on a stretch of Ōtākaro/Avon River between Montreal Street and Rhododendron Island.

“The Memorial Wall will be a beautiful part of the new Christchurch.”

Female Resident, 25-45



Bus Interchange

Whakawhitinga Pahi

Bus Interchange from Lichfield Street



A Green City



A Prosperous City



An Accessible City

The opening of the Bus Interchange (Stage One) on 25 May 2015 marked the second of the key anchor projects to open in central Christchurch and was an important step in developing a region-wide transport system. The Bus Interchange is a comfortable, high-quality, accessible public transport facility for the city. It represents another milestone to celebrate in the city's rebuild.

Public transport is a vital part of any city, contributing to the smooth running, energetic vibe and general success of many cities around the world. By embracing the bus system in Christchurch, people will be able to traverse the city easily. Key results will be to reduce traffic congestion, parking issues and pollution;

and bring people into central Christchurch from all over greater Canterbury. The new Bus Interchange is a key aspect of an integrated transport system. It is included in the initiatives *An Accessible City* and *A Liveable City* – two chapters of the *Christchurch Central Recovery Plan* created to help establish the Christchurch of the future as one of the world's most modern and efficient cities.

The Bus Interchange includes state-of-the-art features to make public transport easy and appealing to a wide audience.

Bus Interchange features



Airport-style lounge

with comfortable seating, in a separate area away from the bus circulation area



Automatic glass doors



Shops and cafés



Bus bays



Fully staffed information booth

Architecturally designed building
full of natural light



A rain garden
that will capture and recycle 70% of runoff



100 secure bike parks



Undergoing Green Star assessment

“I am really excited about what it holds for the future.”

Female Resident 15-25

The Bus Interchange is designed to cope with the city's projected public transport use, from now until 2041. By then it is estimated that 70,000 people will use the Interchange each day.

Accessibility was integrated into the design of the Bus Interchange following consultation with disability and specialist accessibility groups and an independent audit from Barrier Free New Zealand. Key accessibility features include bright, tactile paving for guidance, and large, unisex and wheelchair-accessible toilets, with both left- and right-side facilities and ramps. There are no steps, so all entrances to the building are fully accessible. Aural and visual elements have also been considered. All buses are announced via the public address (PA) system, which helps direct passengers. In addition, an 'induction hearing loop', to provide hearing assistance to hearing-aid users, is installed in the Metro service counter and Braille is included on all key signage. The project team has worked closely with the Blind Foundation to provide suitable lighting levels that reduce glare, and signage and text of an appropriate size.



Accessibility features included throughout



Bus Interchange interior and sliding glass doors



Bus Interchange seating area



Te Papa Ōtākaro/Avon River Precinct

'Kia atawhai ki te tangata.' Care for the people.

Avon River Precinct boardwalk Watermark



A Green City



A Vibrant City



An Accessible City

Te Papa Ōtākaro/Avon River Precinct will re-energise the city by creating an urban waterfront. It will provide accessible spaces for people to gather, both day and night, along with places where people can live, entertain, relax, shop and dine, and where business can flourish.

A resilient green spine that winds its way through the heart of Christchurch, Ōtākaro/Avon River has the potential to act as a major catalyst for inner-city regeneration. Te Papa Ōtākaro/Avon River Precinct will celebrate its strong links to Ngāi Tahu and to early European settlers by enhancing and recognising historical sites along its path.

Significant work is complete or underway. One of the Precinct's first success stories is to be found in the river itself, where fish are now thriving, water is flowing faster and the riverbed is cleaner, thanks to extensive cleaning and rehabilitation works.

On the riverbank, intensive landscape enhancement, which would normally take up to 20 years to complete, is being undertaken in less than four years.

Watermark was the first section of the Precinct to open. Spanning the river's true left bank between Antigua Boat Sheds and Montreal Street, it provides a glimpse of how other Precinct elements could look.

Fast-flowing facts

10,000 tonnes
of liquefaction have been removed



15,000 square metres
of gravel have been cleaned



1,500 fish
have been rescued



9,630 new plants
have been established



1,700 new trees
will be planted



100,000 native and exotic shrubs
will be planted



Information from CCDU website



Avon River works, image courtesy of City Care

One of the other two major projects underway around Te Papa Ōtākaro/Avon River Precinct is the Margaret Mahy Family Playground, which is expected to be complete for the 2015 Christmas holidays. This spectacular all-ages and all-abilities playground is set to become one of Canterbury's most popular destinations. The size of a rugby field, it will be one of the biggest playgrounds in Australasia and boast some of the newest and coolest playground equipment imaginable.



Construction is also underway on The Terraces section of the Precinct, which stretches along Oxford Terrace between Lichfield and Hereford streets. Due for completion in 2016, this section of the riverbank will be transformed into a bustling promenade with grand steps and ramps leading down to the river's eastern edge.

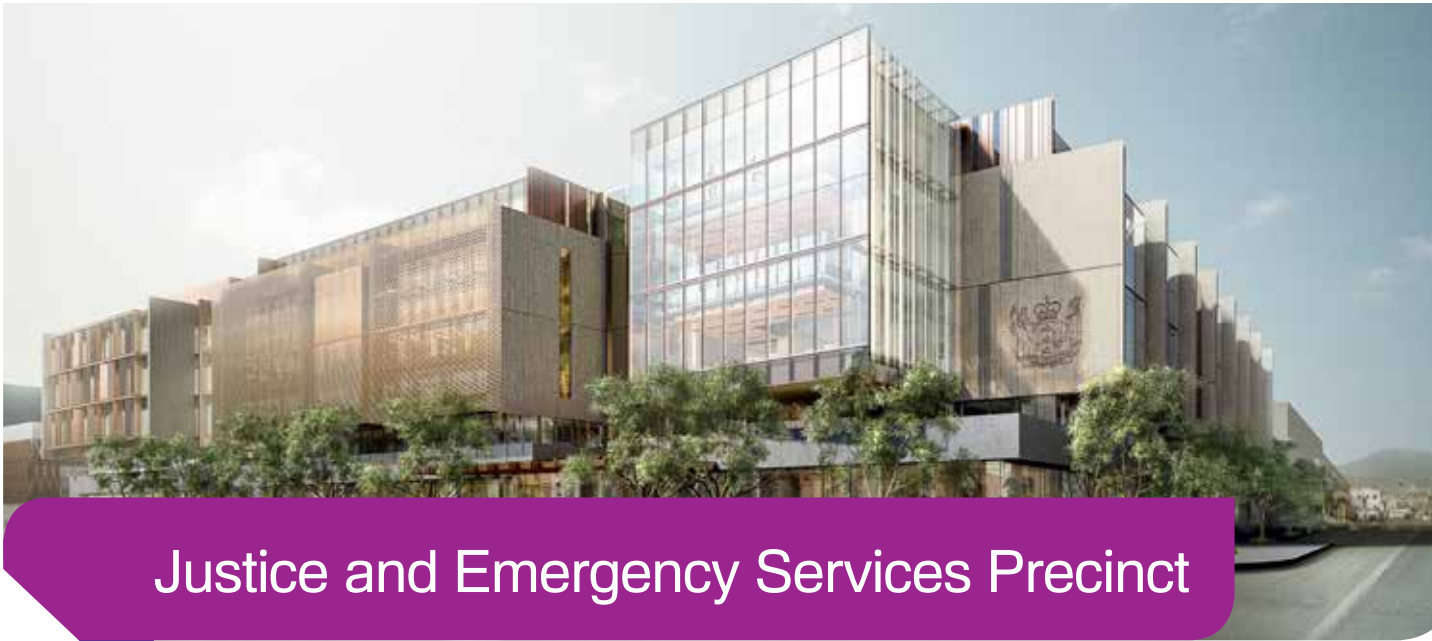
The central point of Te Papa Ōtākaro/Avon River Precinct, Victoria Square is a key civic space with a rich history. The Canterbury Earthquake Recovery Authority (CERA) is working together with its partners and the community to develop a restoration plan for the square. After two rounds of public comment and submissions, the final plan will be released in the latter part of 2015 and work planning can begin.



The Terraces



Section of Te Papa Ōtākaro/Avon River Precinct



Justice and Emergency Services Precinct

Artist's impression of the Christchurch Justice and Emergency Services Precinct



A Green City

The Christchurch Justice and Emergency Services Precinct brings together all justice and emergency services in one purpose-built precinct in central Christchurch.



A Prosperous City

As the largest multi-agency government co-location project in New Zealand's history, it presents an unprecedented opportunity to transform the delivery of justice and emergency services within Christchurch and the Canterbury region. Further, as a prototype for new ways of working, it will also benefit other regions over time.



An Accessible City

An estimated 2,000 people will work in or use the 42,000-square-metre Precinct daily. At the peak of its construction, 400–500 people will be employed.

The judiciary will also be accommodated in the Precinct, in a way that recognises and ensures its constitutional independence.

The Christchurch Justice and Emergency Services Precinct is one of the key anchor projects bringing the centre of Christchurch back to life. With so many employees working, dining and shopping in the city as well as travelling to and from it every day, it will stimulate the recovery even further by supporting retail and commercial activity in the central area and other precincts.

The Precinct will house

Ministry of Justice



Police



Corrections



St John



New Zealand Fire Service



Ministry of Civil Defence and Emergency Management



Canterbury Civil Defence and Emergency Management



Christchurch City Council Civil Defence and Emergency Management



Information from the Ministry of Justice

Key features

Three buildings: a justice building, an emergency services building and a parking building for operational vehicles

Five levels

19 courtrooms

1,100 staff at peak

900 visitors daily

A purpose-built Emergency Operations Centre

South Island 111 emergency services
(NZ Fire Service, Police and St John)

A custodial facility with 31 cells and 2 dayrooms

1.2-metre reinforced-concrete raft foundation

An advanced approach to seismic design
with base isolation technology – 50 lead rubber bearings
and 83 sliders – and built to an Importance Level 4

600-millimetre sideways movement
on the lead rubber bearings

Resilience against any future emergency
The Precinct will have its own power, water, and waste disposal
for at least 72 hours

Information from the Ministry of Justice



Artist's impression of Emergency Operations Centre



St John staff at work

The Christchurch Justice and Emergency Services Precinct is over half-way through its build and is on schedule for completion by mid 2017.



Innovation Precinct

Te Puna Rerekētanga

Artist's impression of the Vodafone building



A Vibrant City



A Prosperous City

The Christchurch Innovation Precinct is now a key location for innovative and high-tech firms. As part of the greater Christchurch rebuild, the Government has taken the opportunity to redefine locations within the central city and create a place where urban innovators can work, live and collaborate in a thriving and competitive community.

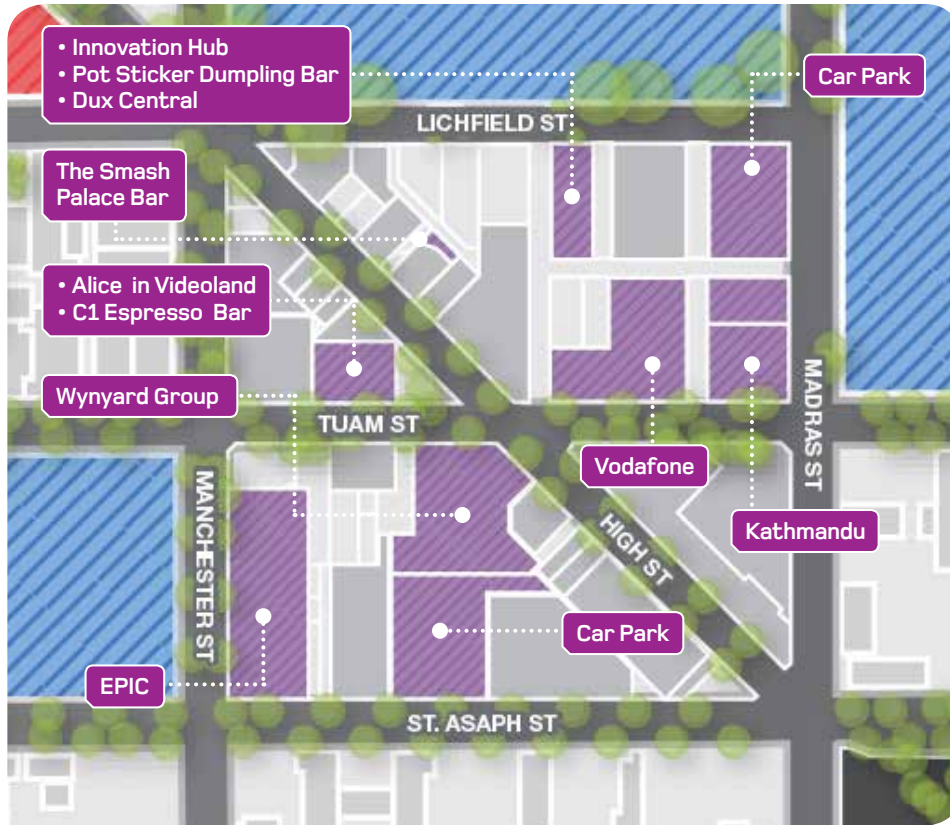
The Innovation Precinct covers an area of approximately 3.6 hectares in the south-east corner of the central city. It is located within three city blocks bounded by Lichfield, Manchester, St Asaph, High, Tuam and Madras streets.

Government agencies responsible for the project have focused on attracting innovative small, medium and large domestic and international companies to locate within the new spaces currently being developed in the Precinct.

To date, Vodafone, Kathmandu, and Wynyard Group have all announced their intention to join the Precinct and all have plans to be on site in 2016. These large companies will be located alongside the Enterprise Precinct Innovation Centre (EPIC), which serves as a bridge connecting innovation-focused companies of all sizes around the world. EPIC will be joined by GreenHouse – a co-working hub that provides affordable office space and a technology accelerator for start-up firms.



Artist's impression of the Kathmandu building



Map of the Innovation Precinct

Innovative Crown entities Callaghan Innovation and New Zealand Trade and Enterprise will also be locating within the Precinct. Another will be a government-funded information and communications technology (ICT) graduate school, which will bring together tertiary education providers and industry stakeholders to deliver high-level ICT education.

The Innovation Precinct will be home to a range of hospitality businesses as well, including the Smash Palace Bar, the Dux Central and Pot Sticker Dumpling Bar, to help make the Precinct an attractive environment in which to work.

This mix of businesses will create a stimulating, enabling and dynamic environment within Christchurch's new-look central city. Greater Christchurch will be a prosperous region for business, work, education and investment, with the Innovation Precinct at the centre of this revitalisation.



Art Box, Tuam Street



Artist's impression of the South Plaza, courtesy of MBIE



Artist's impression of High Street, courtesy of MBIE



Health Precinct/Te Papa Hauora

Artist's impression of the new Acute Services Building



A Green City



A Prosperous City

Health Precinct – The Vision

The Health Precinct/Te Papa Hauora is the hub of a creative and inspiring network that integrates world-class health care, research and innovation, education and industry with a strong emphasis on population health. It will accelerate economic growth, act as a magnet for talent and promote community wellbeing.

Located in the South Frame and overlooking Ōtākaro/Avon River, the Health Precinct/Te Papa Hauora will be within walking distance of the main hospital site.

The future leadership of Health Precinct/Te Papa Hauora is spearheaded by Christchurch's major tertiary and health institutions.



Together they make up the Health Precinct Advisory Council. Supported by CERA and Matapopore (the Ngāi Tūāhuriri earthquake recovery steering group) these Christchurch-based institutions hold a shared vision for the development of a collaborative and world-class hub of health research, innovation and service delivery.



Artist's impression of the new Acute Services Building

“We are going to be the safest city in New Zealand.”

Female Resident 60+

Since the Advisory Council has been established, the planning and design for the facilities in the Precinct are underway. Two projects will cement the Health Precinct/Te Papa Hauora and will add value to the whole of New Zealand.

The Health Research and Education Facility will be a teaching and research centre where researchers are closely linked and integrated with health service delivery and the teaching of health professionals. The shared use of spaces will see better fusion of research into clinical practice as well as the integration of the entire health journey of education, research and

training. Close links with biomedical and clinical research, along with health innovation and industry partnerships, will help bring additional economic activity into the Precinct.

A Research Centre of Excellence brings together a network of researchers, students and clinicians with a clear focus on particular areas of research and innovation. It is anticipated that the Research Centre of Excellence will adopt specific themes in the medical technologies area, including imaging and regenerative medicine, to bring together expertise, equipment and funding across the region in a collaborative framework.



Artist's impression



Artist's impression of the new Acute Services Building

A Green City

He Tāone Tiaki Taiao







Green spaces



A Green City



A Vibrant City



An Accessible City

In the last few years Christchurch has seen a resurgence of community gardens, farmers' markets and greened urban areas, thanks to organisations like **Greening the Rubble** and **Life in Vacant Spaces**, as well as to motivated people in the community. With community groups responding to the land emptied by demolitions, the subsequent green displays have become 'temporarily permanent' projects to enrich and enliven the city.

The Downtown Farmers Market is a community venture that takes place each Sunday at The Commons, on the corner of Kilmore and Durham streets (the former Crowne Plaza site). This market has a focus on fresh, high-quality and, wherever possible, local produce. It also incorporates a smaller element of non-produce and giftware as well as live music and takeaways.



The Downtown Farmers Market



Community gardens

Latimer Square, Cranmer Square and Victoria Square are being enhanced. They will offer beautiful, open, green spaces for relaxing in and safe pathways providing pedestrians and cyclists with an easy way of travelling from one part of the city to another.

The Square has always been a place to gather and celebrate. As major events return to the central city, The Square has recently hosted the Antarctic-themed NZ Icefest festival hub, a New Year's Eve Shihad concert and the Christchurch Marathon event village. It will also be home to the Exxopolis Luminarium immersive art experience during the 2015 Christchurch Arts Festival (CAF).

Christchurch City Council has collaborated with Christchurch Art Gallery Te Puna Waiwhetu and Te Rūnanga o Ngāi Tahu to bring life and colour back to The Square. Sara Hughes' contribution of a towering flag wall and fences filled with plastic 'put-in cups' recall embroidery designs, tukutuku panels and slate patterns on the Christ Church Cathedral roof. Chris Heaphy's work features signs, symbols and geometric architectural elements on a black background, providing a backdrop for a whare complete with living plants.

Over summer 2014–2015, The Square was also home to the popular Friday Night Food Trucks, which attracted up to 1,000 people every Friday night. Food trucks of 16 regular vendors from around Christchurch came together to serve an array of global street food, with entertainment adding to the carnival-like atmosphere.

The re-establishment of The Square as the civic heart of central Christchurch will have a significant impact on the city. The 21,000 square metres of public space provide the perfect location for key public, recreational, cultural and commercial amenities.

It will also provide access to neighbouring anchor projects such as the Convention Centre Precinct, new Central Library, the Retail Precinct and Te Papa Ōtākaro/Avon River Precinct.

The return of entertainment facilities such as cinemas, performance spaces, cafés and restaurants will be encouraged to make The Square vibrant and safe, day and night.

The future design and use of The Square will be determined by a public engagement process in partnership with Christchurch City Council. The popular transitional projects, public art and events could continue as more people return to the heart of the city.



Friday Night Food Trucks in The Square



Living Whare work by Chris Heaphy



'EXXOPOLIS Luminarium' immersive art experience, CAF 2015

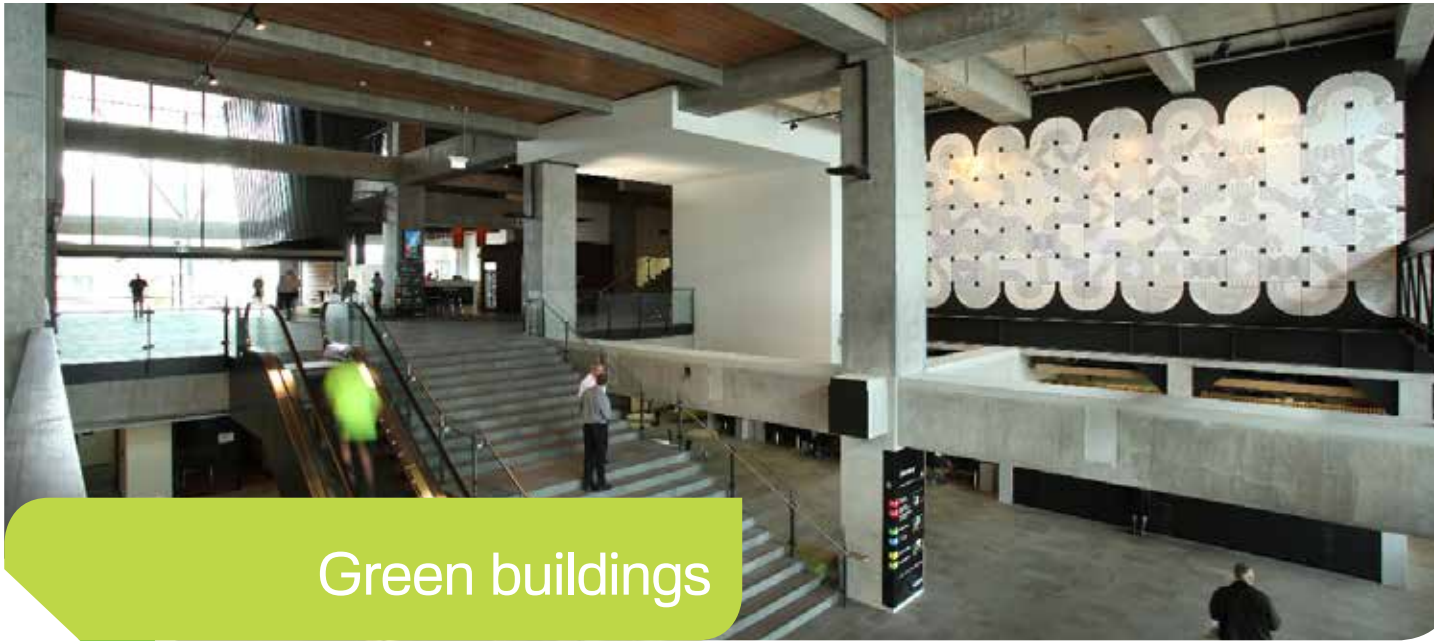


'EXXOPOLIS Luminarium' immersive art experience, CAF 2015

“I can spend an afternoon in the city with my family, wandering and exploring.”

Male Resident 20-35

Ideas to Reality



Civic Building, photo by Simon Devitt

Green buildings



A Green City

Greener technologies in building have a positive lasting legacy. Now Christchurch has an unprecedented opportunity to build green, healthy and resilient buildings.



A Prosperous City

Christchurch City Council has led the way with the **Christchurch Civic Building**, which received a 6 Green Star rating in March 2013.



An Accessible City

The sustainable concepts embraced by developers and builders of the Civic Building are expected to save Christchurch ratepayers around \$1.3 million a year. A range of innovations, including the use of low-emission materials, under-floor air-conditioning and automatic lighting controls that incorporate daylight dimming and occupancy detection, will be responsible for the building's light carbon footprint.

Perhaps crucial to the sustainability and cost-efficiency of the building is its tri-generation system, which will use biogas, pumped from Christchurch City Council's Burwood landfill site to generate its electricity. Spare power generated from this process will be used to heat and cool the building.

The new **Awly Investments development** in central Christchurch has achieved a 5 Green Star design rating – the first new building in the city to do so since the quakes.

The Awly Building – the five-storey, mixed-use development at 287–293 Durham Street – was designed by Warren and Mahoney, and will house offices and retail across three linked buildings. It is due for completion in early 2016.



Bus Interchange

The Bus Interchange is built to meet environmental guidelines and is undergoing Green Star assessment. The building is heated in an efficient way using underground hot water and natural ventilation, and the rain garden captures and treats runoff before it is released. Environmentally friendly materials have also been used wherever possible.

Sustainable features of the Awly Building include:

- *oriented for sun with a well-insulated thermal envelope*
- *a facade with solar-controlled glazing and external shading tailored to each of the three linked buildings*
- *greater resilience and seismic security are achieved through the use of base isolators. These reduce swaying and shaking during an earthquake, helping to limit damage to the building*



Artist's impression of the Awly Building, Durham Street

- *diagonal seismic bracing provides lateral stability and is visible through the building façade. It makes an architectural statement that this building belongs to a more structurally robust, post-earthquake city*
- *a central courtyard offers green spaces*
- *internal design maximises outlook and natural light*
- *a highly efficient, flexible air-conditioning system uses energy-saving EC fan coils*
- *all offices feature LED lighting and occupancy sensors.*

Ideas to Reality

One other Green Star rating has been issued in Christchurch since the earthquakes, when the **Forté Health Building** gained a 4 Green Star custom rating.

The three-level Forté Health Building is a true trail-blazer, as the first Green Star building completed in central Christchurch since the earthquakes and New Zealand's first Green Star medical centre. It is one of only three Green Star health facilities throughout Australasia.

Its sustainable design includes a large internal light-well to bring natural light into the centre of the building; solar water heating; and a generous lawn for green space and reducing stormwater run-off. It uses a highly energy-efficient heating and cooling system, low-energy LEDs for lighting, and water-efficient fittings



Forté Health, Peterborough Street

where possible. It also incorporates a smart system to monitor and control all energy use. Crucially, it is built to withstand a 1 in 2,500-year earthquake.

Several buildings under construction are pursuing Green Star ratings. These include the Vodafone building and Kathmandu HQ in the Innovation Precinct and the BNZ Centre, which will contain the Christchurch Integrated Government Accommodation (CIGA) project.

“You feel like part of the development, seeing things that are happening.”

Male Resident 45-60





A Prosperous City

He Tāone Houkura





Retail Precinct

Wāhi Hokohoko

Re:START Mall

“We are open for business!”

Female Resident 25-35



A Vibrant City



A Prosperous City



An Accessible City

The redevelopment of the Retail Precinct is principally led by the private sector while CERA's role has been to facilitate, where possible, its regeneration. The vision for the Retail Precinct is:

To provide an outstanding shopping, dining, leisure and cultural experience which reflects the essence of contemporary New Zealand with a distinct South Island focus.

The Retail Precinct Plan provides a coordinated vision for the spatial layout of the Christchurch Retail Precinct. It brings together and displays the investment land owners have already made and coordinates areas that fall outside individual developments.

The plan does not supersede the individual work that land owners are undertaking nor does it dictate the way development should be carried out. Rather, it aims to 'tell the story' of the Precinct as a whole and to support land owners and developers as they progress and promote individual developments.

Four major developments are now in the construction stage, due to be completed within the next 18 months.



Shopping on Victoria Street



Artist's impression of the ANZ Centre, exterior

The ANZ Centre (previously home to the Triangle Centre) is a sophisticated three-level building diagonally opposite Ballantynes and bounded by Colombo, Cashel and High streets. In keeping with the retail and pedestrian focus of the Retail Precinct, the ANZ Centre design maximises the ground-level area available for shopping and hospitality, with the commercial offices on the three large floor plates bringing a significant working population to the site and its surrounds.

A light, airy atrium provides a large hospitality area. A cascading glass roof covers the atrium space, and incorporates a ceramic frit pattern to the glass, which will provide shading and visual appeal. Tenants include ANZ, Beca and, in a new concept store, Hallenstein Glasson. The ANZ Centre is due for completion by the end of February 2017, with an early opening of the retail tenancies for Christmas trading 2016.



Artist's impression of The Terrace, Courtyard View

The Terrace, Stage One, includes a number of office spaces on various floors, ground floor hospitality located around a number of atmospheric laneways and a seamless connection through to the banks of Te Papa Ōtākaro/Avon River Precinct.



Artist's impression of BNZ Centre

At the **BNZ Centre**, also under construction, the Crown will be a major tenant as the centre will host the CIGA project. Approximately 400 public servants will occupy the BNZ Centre. Retail is available on the ground floors. The office space above will be tenanted by other businesses, in addition to government departments and Crown agencies, making the development vibrant and multi-purpose.



Artist's impression of The Crossing

The Crossing will offer high street and boutique retail stores, hospitality and office space in its key central location in the heart of the Retail Precinct. Like the other developments, The Crossing is due to open in time for Christmas 2016.

“Shopping central is going to be even better than before.”

Female Resident 40-65



Convention Centre Precinct

Whare Rūnanga



A Vibrant City



A Prosperous City

The Convention Centre Precinct will link to The Square, Central Library, and Performing Arts and Te Papa Ōtākaro/Avon River precincts, offering a vibrant, integrated and authentic Christchurch experience. This state-of-the-art facility will provide world-class meeting and convention spaces, and be supported by a mix of hospitality, retail, office, parking and accommodation spaces.

CCDU, with support from its strategic partners, is working with Plenary Conventions New Zealand (PCNZ) as the preferred developer for the project. PCNZ consists of proven international infrastructure firm Plenary Group, and experienced local firms Ngāi Tahu Property and The Carter Group. Leading international convention centre and hotel operator Accor has been selected as the preferred operator for the Convention Centre.



Artist's impression of Christchurch Convention Centre, image courtesy of PCNZ



Artist's impression of Christchurch Convention Centre, image courtesy of PCNZ

The purpose of this project is to:

Support regional and national economic policy and growth.

Develop sustainable, diversified economic growth for greater Christchurch.

Contribute to a vibrant city centre that drives civic pride and improves residents' quality of life.



Private enterprise

Knox Plaza, Victoria Street



A Green City



A Vibrant City



A Prosperous City

Private enterprise in Christchurch is progressing well. The city centre now boasts some impressive architecturally designed and creatively constructed new buildings that would not look out of place in other major world cities. Many of these buildings are state of the art, using new technologies and forward-thinking materials, and have eye-catching designs. One that stands out is the unique, blue and curvy, louvred glass **Deloitte building**, with its developers aiming to get a high Green Star rating for its environmental design.



Deloitte Building, Cambridge Terrace

“I think it is awesome, I go into Christchurch a lot and every time I go in there is something new.”

Male Resident 15-25



The Carlton, Carlton Corner

These new buildings meet 100 per cent of the new Building Code, including its earthquake resilience and foundation requirements. The low-rise profiles allow sunlight to filter unhindered through the city and provide a safe environment for residents and visitors.

Not everything by the private sector is brand new; restoring the familiar and historical buildings and city centre areas has been an important part of the regeneration of Christchurch. Areas like **Cathedral Junction** and **New Regent Street** have been repaired and are now thriving again. The **Isaac Theatre Royal** was lovingly restored and has won numerous awards for the resulting building exteriors and interiors.



Victoria Street

Victoria Street, a busy and energetic place prior to the earthquakes, was one of the first areas to receive a regenerative facelift from the private sector. Now this vibrant street is home to a number of architecturally designed, new and restored original buildings, office space and hospitality venues.



Craigs Investment Partners House, Salisbury Street/Victoria Street corner



New Regent Street



Stranges Building, High Street

A Vibrant City

He Tāone Tū, he Tangata Ora







Performing Arts Precinct

Te Whare Tapere

The Isaac Theatre Royal auditorium



A Vibrant City



A Prosperous City

The Performing Arts Precinct will provide a vibrant home for the city's performing artists, attracting Cantabrians and visitors alike into the central city and in this way adding to its vitality as well as supporting community and cultural wellbeing. This integrated precinct is being developed with the support of the Crown and Christchurch City Council. Through CCDU, the Crown is funding the acquisition of land and the provision of long-term concessionary leases for core facilities, and the Council is contributing \$30 million. The new facilities will be linked by a public realm area suitable for outdoor performances.



Phantom of the Opera, producer Showbiz Christchurch, Danielle Colvin - photographer



Phantom of the Opera, producer Showbiz Christchurch, Danielle Colvin - photographer



Phantom of the Opera, producer Showbiz Christchurch, Danielle Colvin - photographer

The Performing Arts Precinct is actively working with the arts community to develop facilities that will meet the needs of arts organisations, contribute to the wider performing arts sector, and be financially sustainable.



Phantom of the Opera, producer Showbiz Christchurch, Danielle Colvin - photographer

The Council, with the support of the CCDU, has undertaken a visioning exercise with key stakeholders in the Precinct. Master-planning is also underway to identify the best ways to deliver the performance arts facilities, public areas, car parking and opportunities for private businesses to participate.



Isaac Theatre Royal façade

With the Isaac Theatre Royal already open, the Crowne Plaza due to open in winter 2016 and The Piano: Centre for Music and the Arts under construction, the development of the Precinct is well underway.



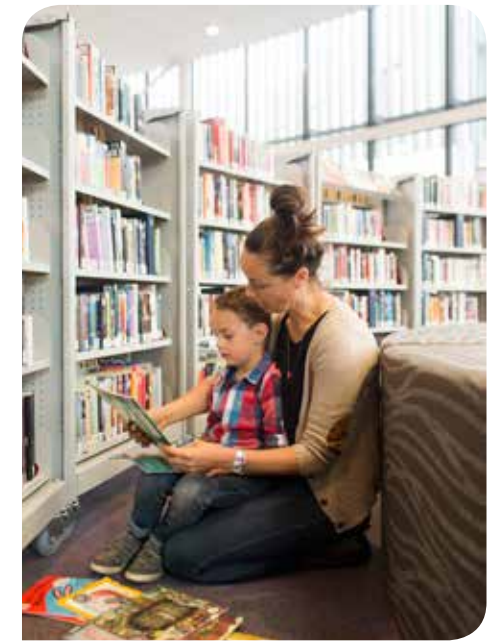
Artist's impression of The Piano: Centre for Music and the Arts

The Piano includes a concert hall, which will have seating for 330; an atrium; two flat-floor performance or rehearsal spaces – The Chamber and The Box; and a range of studios for both casual and permanent hire.



Central Library

Te Whare Pukapuka Matua



A Green City



A Vibrant City



A Prosperous City

The design for Christchurch's new Central Library was inspired by the Canterbury landscape and enthusiastic feedback from city residents. The striking new civic building in the north-eastern corner of The Square is expected to attract up to a million visitors a year, helping to revitalise the heart of the city.

The Central Library will continue to preserve the city's culture and heritage through its Aotearoa New Zealand, Ngāi Tahu, Pasifika, and family history specialist collections. They will have a prominent position in the 9,850-square-metre building, which will be the largest public library in the South Island.



Artist's impression, Central Library, interior top floor

The library will have the mix of vibrant, family-friendly areas and quiet indoor and outdoor spaces people said they wanted. It will also include:

Performance and exhibition areas



A 200-seat community arena

for author talks, book launches and public debates



An innovation zone

for trialling new technology



A kids' play zone



Rooms for meetings,

group courses and activities such as craft sessions



Up to 100 computers

for public use



A music production studio, a film editing unit and 3D printing



A café, espresso bar and retail area



Artist's impression, Central Library, exterior from Gloucester Street

When it opens in 2018, the new Central Library will be a place where people can meet, read, study, share ideas, learn new skills, try new technology and enjoy entertainment.

More than 2,400 ideas gathered from Christchurch residents during the Your Library, Your Voice campaign had a major influence on the building layout and on plans for exciting new services.

New Zealand company Architectus and Danish library experts Schmidt Hammer Lassen developed the design in discussion with Ngāi Tahu and Ngāi Tūāhuriri rūnanga.

The façade echoes the golden colours and folds of the Port Hills, and the triangular leaves of the native harakeke flax that once grew in swamps around the site.

Terraces on upper floors face culturally significant points in the Canterbury landscape and beyond, such as Aoraki/Mt Cook, Horomaka or Pātaka o Rākaihautū/Banks Peninsula, and Maungatere/Mt Grey.

The ground floor acts as an extension of The Square, linking the Library to the neighbouring Convention Centre and Performing Arts precincts.



Artist's impression, Central Library, interior ground floor atrium



Metro Sports Facility

Taiwhanga Rēhia



A Green City



A Vibrant City



A Prosperous City



An Accessible City

Whether people are on the court, in the pool, on the hydro slides, taking a yoga class or cheering from the stands, they will find the Metro Sports Facility to be a real game changer.

It will be the second-largest sport and recreation facility of its type in Australasia and will be accessible to people of all ages, abilities and sporting skills.

In 2011 Share an Idea identified the need for a metropolitan sports hub in the central city, which would include aquatic, health and fitness, performance and training facilities. In 2012 the Christchurch Central Recovery Plan outlined that:

A new Metro Sports Facility will attract people from across Canterbury, New Zealand and the world. They will be able to train, participate and compete in a broad range of sports for all ages and abilities. The facility will also offer a pleasant and relaxing environment for spectators.

The Metro Sports Facility will include:

An aquatic centre
with a 10-lane, 79-metre-long competition pool, diving facilities and spectator seating



A large leisure (fun) pool and two feature hydro slides



A spa, sauna and steam room, with outdoor hot pools



A separate, multi-purpose, warm-water pool
for fitness, leisure and rehabilitation



A programme pool
providing for learn to swim



Nine indoor sports courts with spectator seating



A fitness centre,
dance studio spaces, a gym/weights facility and group fitness rooms



A water sensory facility
providing a multi-sensory aquatic recreational environment for people of all ages and abilities



A high-performance sport centre





Its aquatic, indoor sports and leisure facilities will offer a top-class environment for players and spectators alike, and will provide opportunities to host national and international events.

The Metro Sports Facility is an important part of creating a vibrant city centre. Among its wonderful options for fun and fitness are two feature hydro slides for aquatic play, learn to swim areas, a wellness centre, crèche, café, birthday party room, a fitness centre, dance studios and more.

Its location has convenient links to other central city locations. It is close to other sports venues and great public spaces like Hagley Park and Te Papa Ōtākaro/Avon River Precinct.

As the Health Precinct/Te Papa Hauora's neighbour, it will support health and wellness in treatment as well as research, sports medicine, and rehabilitation.

The Metro Sports Facility will be easy to get to by public transport, private vehicles, and the new walking and cycling links through the central city. It will be minutes away for people working and living in the central city.

Another major benefit of the Metro Sports Facility will be its flexible, multi-purpose spaces. In this way, a wide variety of sports and recreation activities can be catered for in the long term, future-proofing the Facility.

The intention at this stage is to have some of the facility open to the public in 2019, and the remainder in 2020.

Interesting Facts:

The 79-metre-pool will be a 'transformer-style' pool with two moveable bulkheads. These will allow multiple activities to take place in the pool. For instance, a bulkhead could be moved to create a 50-metre Olympic/World Championship length competition space, with the warm-up pool alongside.

Alternatively, the two bulkheads could be used to create three different pool spaces; in the first, a school could be taking a lesson, in the second a fitness class might be underway, and in the third a team could be practising water polo.

The pool also has a moveable floor at one end.

The floor height can be adjusted for different activities ranging from high-performance sport to community swimming or a fun water-play event.



Stadium

Taiwhanga Hākinakina

FIFA U20 World Cup



A Green City



A Vibrant City



A Prosperous City



An Accessible City

The proposed Christchurch Stadium will be a multi-functional venue catering for a range of recreational activities but particularly large-scale spectator events. Sports events, concerts and other major events will take place on local, national and international scales.

The Stadium will enjoy state-of-the-art design and will aim to attract new events, boosting the local economy and increasing tourism in the region.

It will be positioned close to the arterial transport routes and the Bus Interchange, which will contribute to its accessibility. As at August 2015, the Crown had purchased or reached agreement over the sale of 84 per cent of the land required for the Stadium.



Current AMI Stadium, Christchurch

“Christchurch’s heart is still beating – you need to come and feel the pulse.”

Female Resident 45-60





Christchurch street art, Colombo Street



The Court Theatre



A Vibrant City



A Prosperous City

Arts and culture have always played a significant part in the Christchurch community. After the earthquakes, art was one of the key activities that came back to life around the city.

Street art started to pop up soon after the earthquakes and now has become an iconic part of Christchurch's new character. Colour and creativity take people by surprise in grey areas in the central city.

Many images essentially become temporary landmarks, although most disappear quickly as the empty city blocks are replaced by new buildings. Shows like Oi YOU and the Spectrum Street Art Festival have meant famous artists like Banksy and Sofles can be seen alongside lesser-known artists. One of the most memorable and captivating street art images is *Ballerina* on the wall of the Isaac Theatre Royal.



A Simple Space, CAF 2015



The Isaac Theatre Royal interior

A healthy arts sector is integral to a diverse and exciting community. **The Isaac Theatre Royal's** rebuild plays a key role in the recovery of our city and region, especially in the Performing Arts Precinct. The significant reconstruction project had major challenges throughout, making it one of the most intricate building projects in earthquake-damaged central Christchurch, with an overall rebuild cost of \$40 million.

The sections of the theatre built in 2004/05 suffered only moderate damage and were repaired, but the original 1908 auditorium and 1928 foyer spaces were not considered repairable. Structural earthquake strengthening carried out in 1999/2000 prevented complete collapse of the Theatre during the quakes. Thanks to this work too, key heritage items, including the Edwardian façade, could be retrieved and salvaged.

The Theatre re-opened on 17 November 2014. The design has achieved 100 per cent of the earthquake requirements in the new Building Code while the original style and finesse of the original 'Grand Old Lady' of Canterbury theatre have been maintained throughout. At the same time, various technical and design enhancements have made the theatre the strongest and safest performance venue in New Zealand.

The **Court Theatre** lost its home in the Arts Centre in February 2011, but since December 2011 it has been residing in The Shed in the suburb of Addington. Although it is a great temporary venue, plans to bring the Court Theatre back home to the central city are underway. The Court now has an opportunity to find a permanent home in the Performing Arts Precinct, as does the Christchurch Symphony Orchestra and the Music Centre of Christchurch. The final make-up of the Performing Arts Precinct will be complementary to the use of the repaired



Arts Centre Clocktower, image by Johannes van Kan and The Arts Centre

Town Hall, a construction project which is being undertaken by the Christchurch City Council.

Restoration of the **Arts Centre of Christchurch** is the largest heritage project being undertaken in the world today and is expected to be completed in 2019. As a result of the Canterbury earthquakes series, all but one of the 23 heritage buildings at the Arts Centre sustained significant damage and were closed. Extensive restoration work is now underway, with the site opening to the public in stages as buildings are ready for occupation.

The Arts Centre has historically been an internationally renowned centre for the arts, culture and creativity. A rare opportunity now exists to re-imagine the Arts Centre so it becomes a hub for creative entrepreneurs that is undeniably 21st century: capacity building, content-rich and digitally enabled. Neo-gothic former Canterbury University buildings will house the hub.

Considerable effort is going into recreating the buildings as they were conceived in 1877 – but now fitted with modern infrastructure.

When complete, the Arts Centre will be a mixed-use precinct that is open day and night. It will host Christchurch's largest information centre, high-quality food and retail outlets, performance and visual art venues, collaborative workspaces and Rutherford's Den – a boutique museum about the life and experience of Ernest Rutherford.

Other projects and events that have gone ahead since the earthquakes, such as Art Box, Beat Box, the Christchurch Arts Festival and events organised by the Canterbury Museum, to name a few, have allowed Christchurch people and visitors to savour a taste of arts and culture.



Events

Cricket World Cup 2015 opening ceremony



A Vibrant City



A Prosperous City

After the Canterbury earthquake series, public events of any nature were not high on the list of priorities for Cantabrians. But slowly and surely, as events began to take place again, it became clear that the Christchurch public needed them and wanted more.

From social and cultural events like the Food and Wine Festival, Chinese Lantern Festival, Classical Sparks, TEDx and Te Matatini Kapa Haka Festival to sporting events such as the ICC Cricket World Cup and FIFA U20 World Cup, people attended in large numbers. It is clear that people found the energy and connectedness of events comforting and good for their overall wellbeing. These many events also demonstrated that Christchurch is capable of holding major events successfully.

Special visits from the British Royal Family have seen the streets lined with people. Prince Charles and Camilla, Duchess of Cornwall, Prince William and Kate, Duchess of Cambridge, and Prince Harry have all showed their support for greater Christchurch.

New Zealand Cup and Show Week did not miss a beat after the disruption of February 2011 and has been more successful with every passing year. Likewise, the World Buskers Festival has come back every year, using Hagley Park and other unfamiliar venues when the usual venues were no longer available.



Classical Sparks



La Cage Aux Folles at the Court Theatre, photo by The Court Theatre



Le Race



Cricket World Cup 2015 opening ceremony



Classical Sparks

Unique events appeared like the Stand Tall exhibition, a city-wide display of uniquely painted giraffes, which captured the imagination of the public. The Spectrum street art event, displaying the largest private collection of Banksy art as well as many more street artists, was a huge success and has led to a permanent street art exhibition at the YMCA.

Christchurch is a busy place with lots happening throughout the year – events that provide a vibrant backbone to the ever-evolving city.



Christchurch Stand Tall



Urban Assault Race



Corianders Restaurant, St Asaph Street



A Vibrant City



A Prosperous City

The number of hospitality venues open in Christchurch is approaching the pre-earthquake level. This is an amazing achievement given that so many businesses were closed down or affected as a result of the Canterbury earthquakes.

Complementing the suburban hospitality vibe in areas like Addington and Merivale, central city areas such as Victoria Street, St Asaph Street and Stranges Lane are flourishing. Offering a mixture of original, relocated and new venues in a wide range of styles and cuisines, private enterprise has backed the city centre, taking its confidence from the framework shown in the Blueprint Plan.



The Dirty Land Bar, Victoria Street

“There is quite a bit going on. It will be good to see what the future holds.”

Female Resident 45-60

Whatever people’s tastes are, they can find something to suit them in these burgeoning parts of town: traditional Thai and modern Thai, South American and Mexican, Japanese and Chinese, Southern-style American and a good old-fashioned burger. Christchurch now boasts an international range of restaurants, bars and cafés.

Other unique boutique establishments are doing well in New Regent Street, High Street and Colombo Street. More are scheduled for the future on The Terrace, in the Deloitte building, the revitalised Poplar Lane, The Crossing and the ANZ Centre.



The Last Word, New Regent Street



Mexicanos, Victoria Street



Saggio di Vino, Victoria Street



Bootleg BBQ Co, Welles Street



Private Residential Developments

Manchester Street



A Green City



A Prosperous City

In addition to the substantial residential housing developments in the East Frame and South Frame, private developers are creating pockets of housing in and around the city. Many people are also starting to look at living centrally again.

Private investment is key to the growth of Christchurch and the location of the anchor projects, as outlined in the Blueprint Plan, is influencing where the residential developments are located.

Apartment complexes that would not look out of place in any major city in the world are springing up as an alternative living style to the traditional 'quarter-acre block' previously seen in Christchurch. Having diverse housing options within the four avenues is vital.

Although the East and South frames will provide large-scale residential city developments, the contribution that private developers can offer will add another level of choice for the Christchurch public.



Dorset Street/Park Avenue corner



Residential Demonstration Project

Whakaaturanga Kāinga



A Green City

CERA has partnered with Christchurch City Council and the Ministry of Business, Innovation and Employment to run the Residential Demonstration Project as an international competition, showcasing how high-quality living can be achieved in the central city. The project is known as 'Breathe'.



A Prosperous City

The site, approximately 8,100 square metres, is located to the east of the East Frame, adjacent to the Margaret Mahy Family Playground. It is close to the variety of other amenities being developed throughout the central city.

The Residential Demonstration Project will attract more residential development and activity to the central city. Once the development is completed, the central city will gain a prominent example of attractive, high-quality housing opportunities. 'Breathe' will demonstrate how sustainable living can be incorporated into inner-city living.

“I’m delighted to see new buildings going up.”

Female Resident 25-40



East Frame

Pūtahi Whakaterāwhiti

Artist's impression of the East Frame



A Green City



A Vibrant City



A Prosperous City



An Accessible City

East Frame Residential Precinct

The East Frame will be a new neighbourhood located in the city around a large, central green space. It will combine residential development with cafés, restaurants and outdoor entertainment areas, presenting the best that inner-city living has to offer.

From four shortlisted developers, Fletcher Residential (under the Fletcher Living brand) has been announced as the preferred developer for the East Frame neighbourhood. Its proposal conveyed a compelling vision for the East Frame, with three distinct precincts defining the exciting new character of the area.

The East Frame covers 20 per cent of the Core and is expected to house about 2,200 people, lifting the city centre population by 45 per cent. This significant development will be a big step forward for Christchurch housing and the central city.

This large increase in residents living centrally will in turn stimulate more cafés, restaurants and cultural events that are crucial to achieving the accessible, vibrant and prosperous central city envisaged in the *Christchurch Central Recovery Plan*.

*“We’re back,
we’re better
than ever!”*

Male Resident 60+



Artist's impression of the Lichfield Precinct of the East Frame

Fletcher Living's proposal centred around three distinct precincts, Avon, Latimer and Lichfield. Each will have a character of its own that defines a particular part of the neighbourhood.

The proximity of the East Frame to the central city, along with all the convenience and opportunity this thriving community will offer, will attract a vibrant mix of people. Living in the East Frame will mean being a part of the transformation as Christchurch grows and develops to take its place as one of the world's most modern cities.





New York Highline, similar to proposed South Frame



A Green City



A Vibrant City



A Prosperous City



An Accessible City

South Frame

The South Frame completes the framing of the Core. It introduces a new series of public spaces connected by the Greenway and laneways. It will also link the residential East Frame to the Metro Sports Facility and the Health Precinct/Te Papa Hauora.

Helping to create a greener, better-connected, walkable and vibrant city centre for Christchurch will be another crucial role of the South Frame. A series of open spaces will evolve, attracting markets, events and festivals along with accommodation, hospitality and work establishments. This new place will be a safe environment where people can relax, work and play, as well as offering access to the central city.

New buildings will integrate with existing and renovated ones, creating an eclectic mix of urban, industrial character and renewed charm.

Nestled between the Health Precinct and the Innovation Precinct, the South Frame will provide people with inviting and accessible connecting routes to and from busy places. It will allow them to consider walking and cycling as an alternative to motorised transport.



Artist's impression of South Frame greenway





An Accessible City

He Tāone e Wātea Ana ki te Marea





Travel

Shared streets as part of the travel network



A Green City

The new central city travel network is an important part of creating a welcoming central city that puts people first. *An Accessible City*, the transport chapter of the *Christchurch Central Recovery Plan*, will make it easier for cyclists, pedestrians, bus passengers and motorists to move around as well as enjoy great public spaces.

It is vital to create a central city travel network that will accommodate the city's expected growth, long after the rebuild has been finished. It is just as important to establish a network of people-focused gathering places and streets that enhance the accessibility and people's enjoyment of central city life.



A Vibrant City

From ideas...



An Accessible City

Ideas and viewpoints about transport in the central city were gathered from Christchurch City Council's 2011 'Share an Idea' campaign and feedback from Accessible City consultation in late 2012 and early 2013.

The Accessible City chapter was developed by CERA in partnership with Christchurch City Council, Environment Canterbury, the New Zealand Transport Agency and Te Rūnanga o Ngāi Tahu and released in late 2013.

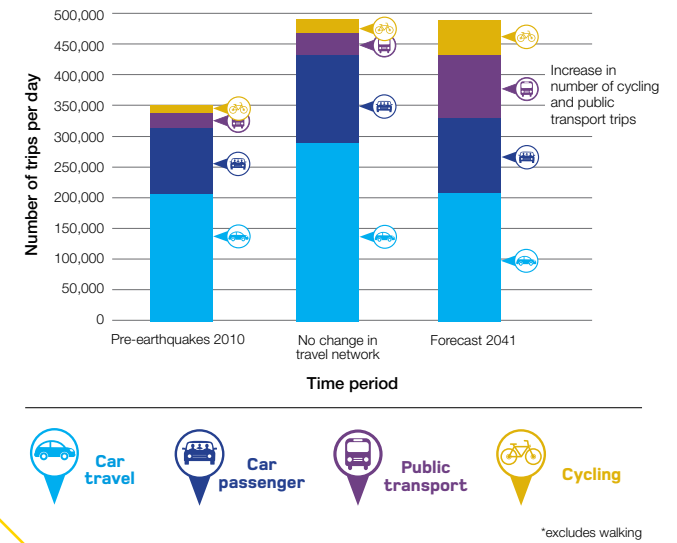
At three consultations in 2014 and 2015, Christchurch City Council and CERA sought further feedback on the finer details of seven transport projects around the city.



Images show shared streets as part of the travel network



Comparison of daily trips made to, from and within the central city*



to reality...

Accessible City plans to:

restore the quality of our central city roads



prioritise streets for different modes of transport



reduce speeds to make streets in the Core safer and more cycle- and pedestrian-friendly



encourage motorists to make better use of the four avenues



Construction for the first phase of Accessible City projects began in late 2014 and is expected to be complete in 2017. The first phase focuses on getting people to, from and between central city destinations.

As a result of the work to date, there is already better access to the Bus Interchange, the Health Precinct, Metro Sports Facility, Retail Precinct, South Frame and Te Papa Ōtākaro/ Avon River Precinct.

The conversion of Tuam Street from two-way to the main one-way eastbound route through the central city, starting at the Tuam Street/Hagley Avenue intersection, is underway.

The central city's first separated 'Copenhagen-style' cycleway has been completed on Colombo Street between St Asaph Street and Lichfield Street. The new Shared Path in Hagley Park, adjacent to Hagley Avenue, is proving popular with cyclists and pedestrians.

The new simple T-intersection at the Hagley and Moorhouse avenues intersection, with 23 per cent more green light phasing, has reduced the build-up of traffic. With no entry to Hagley Avenue from the south, congestion at Hospital Corner will also be reduced.

Closure of Oxford Terrace to eastbound traffic between Antigua and Montreal streets has already reduced vehicle traffic significantly.

This area will eventually be a slow speed area so that pedestrians, cyclists and motorists can all enjoy this part of Te Papa Ōtākaro/Avon River Precinct.

With the earthquake rebuild progressing and Christchurch's population increasing, a modern central city travel network is being constructed to meet demand both now and well into the future.



Accessibility – access for all



A Vibrant City



An Accessible City

Accessible City caters for a wide range of pedestrian needs, with many more pedestrian links to destinations in the central city. All pedestrians, but particularly those for whom age, disability or mobility is an important consideration, can feel more confident as a result of reduced vehicle speed limits in the central city Inner Zone to 30 kilometres per hour. Giving attention to on-street parking for taxis and those with disabilities is an important part of planning for the central city travel network.

“Everybody will be able to enjoy our new city.”

Female Resident 45-60



What progress
looks like...







What progress looks like...

World Buskers Festival

The regeneration of our 21st century city is not just about the development of the major anchor projects or other large projects mentioned in the Blueprint Plan. The Blueprint Plan was also created to give confidence and direction to the private investment sector and the major civic projects have successfully acted as a catalyst. Previous sections have shown private developments are certainly thriving and many more are planned in the future. Moreover, society has benefited from the direction and growth inspired by the Blueprint Plan as numerous community-led projects and major events, many attracting international interest, have taken place in our resilient city.

As always, the anchor and major projects are all about people; from the amazing street art rising from the rubble to the World Buskers Festival and ICC Cricket World Cup, Christchurch has become somewhere that everyone can enjoy and be proud of. Here are just a few of the highlights from the last three years.



Cricket World Cup 2015



World Buskers Festival



Kite Day, New Brighton



Cricket World Cup 2015 opening ceremony



Cup Day 2014



Royal Visit

2010

2011

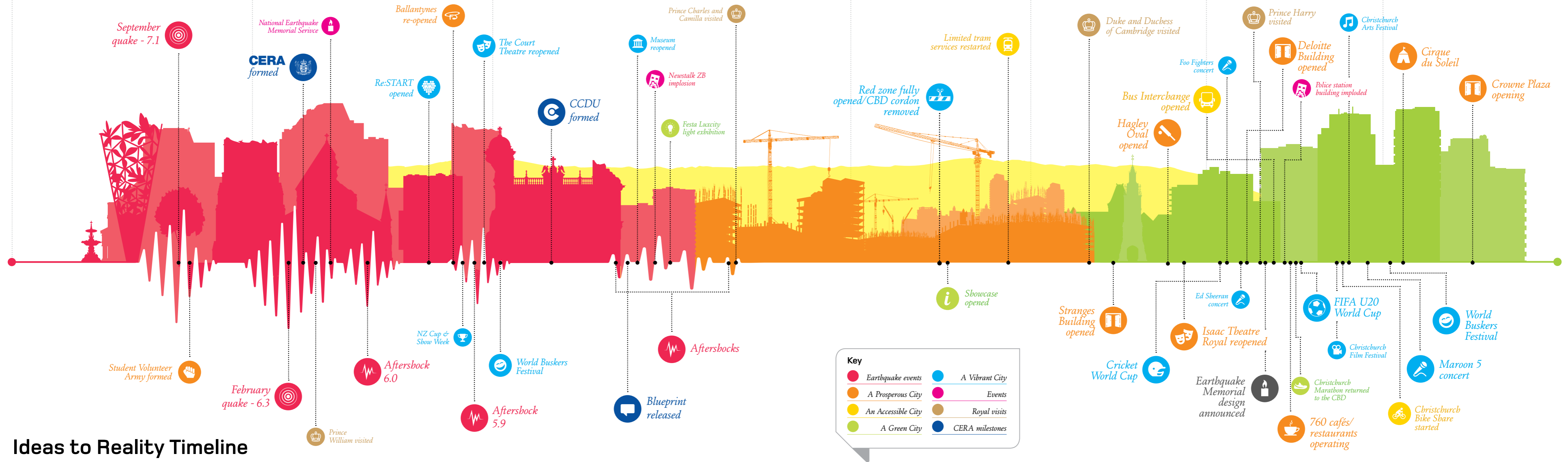
2012

2013

2014

2015

2016



Ideas to Reality Timeline

