

Vision revealed for world-class family playground

Climbing towers connected by bridges, a 4-metre-wide slide and a double flying fox will be among the exciting features of the planned new inner city Christchurch playground which the children of Canterbury helped design.

Playground equipment supplier PlayRope has been contracted by the Christchurch Central Development Unit (CCDU) to supply \$2 million worth of the highest quality equipment for the Margaret Mahy Family Playground. The first elements of the playground are due to open to the public by Easter next year.

The playground will take up about one hectare of a 2.5 hectare block bounded by the Ōtakaro/Avon River and Manchester, Madras and Armagh streets. It will include a café and amenities block.

"The cost of developing this whole block is \$20 million, including site preparation, diversion of services, land remediation, decontamination, improvements to Armagh Street and significant earthworks," says CCDU Director Warwick Isaacs.

"There has been some confusion about the cost of the playground itself, which works out to be about \$3 million for the playground equipment and surfaces. Considering

the size of the playground, this is good value for money when you consider what it costs to establish a playground from scratch."

Warwick Isaacs says they want to see the Margaret Mahy Family Playground become a world-class regional destination for all ages.

"With the loss of a vibrant central city due to the quakes, there is a very real risk that our children will lose contact with what a central city can be like. We hope this will bring our children and youth back to be part of a renewed central city, making this place more than just for shops and businesses – but a place for people," says Mr Isaacs.

What can you expect to see in the Margaret Mahy Family Playground?

The ideas of local children were gathered through the Amazing Place competition, and the stories of prominent

authors Margaret Mahy and Elsie Locke, and those of Te Rūnanga o Ngāi Tahu, are also drawn on in the design. CCDU's design team has worked with PlayRope on specifically designed equipment required for the playground.

Key features include:

- double flying fox
- 4-metre-wide slide
- fitness trail
- picnic areas
- pavilion including a café.

Margaret Mahy Family Playground will include a range of stylised settings:

- **forest**, with 10-metre-high climbing tower, giant rope nets, bridges, look-outs, slides and swings
- **coastal**, combining sand and water play so children can build and dig
- **wetlands**, with a splash-pad, water jets, sprinklers, pumps, and channels that can be dammed, diverted and flooded
- **plains**, consisting of a broad, grassed area, plus a pavement story arc inlaid with text and images from three local story-tellers: Te Rūnanga o Ngāi Tahu, Margaret Mahy and Elsie Locke. ♻️



Hon Gerry Brownlee
Minister for Canterbury Earthquake Recovery

Four years on from our first big earthquake it is easy to ask, "what's up in greater Christchurch? Where are we at in this recovery?" As Minister for Canterbury Earthquake Recovery, it's my privilege to attend a lot of ceremonies marking rebuild progress and achievements, big and small. So I'm never short of reminders of how broadly and rapidly this recovery really is occurring.

Just recently I had the honour of drilling in the final screws on the new roof of the largely restored and rebuilt Knox Presbyterian Church on Bealey Avenue. This effort is a testament to the community which rallied to save the structure after the earthquakes. It is one of many inspiring stories you can watch on the documentary *Christchurch - The Ever Evolving City* which shows progress across all aspects of the rebuild. You can watch it online now at www.futurechristchurch.co.nz

Christchurch City Council, SCIRT and Christchurch Central Development Unit are also making progress with the Terraces project on Oxford Terrace. Early work is underway and, once complete, this project will offer people a whole new experience of sharing social and functional space, and getting up close and personal with the Ōtakaro/Avon River.

As you can see on the cover page of this Update, the design of the Margaret Mahy Family Playground is really taking shape and it will be unlike anything seen before in New Zealand. Again it represents a tremendous opportunity for a vibrant, social space where people of all ages can gather, have fun, celebrate life and local history. Our children are growing up in an environment like no other in New Zealand, and this playground represents an opportunity for them to reconnect with the central city and see for themselves that this city, now and in the future, is for them.

In a few weeks, the largest continuous concrete pour since the earthquakes is scheduled to take place at the Bus Interchange site, which will mark a big step forward for that project. At the end of this month, you will also see demolition get underway on the old Central Library on Gloucester Street. Preparation work is happening now. This will make way for the Christchurch Convention Centre Precinct, which will give a big boost to tourism, business and the local economy.

Speaking of the economy, Canterbury is yet again leading the way among the regions with the ASB Cantometer Index rising to a fresh high of 1.8 in August (up from 1.6 in July). Building activity increased by 25 per cent in the last quarter. According to ANZ data, concrete production for Canterbury has nearly trebled since early 2011. Canterbury's employment figures still outstrip the rest of the country significantly.

As you may know, changes have been announced in terms of how CERA will be governed. As the recovery evolves, so too will the role of CERA, and we need to plan for transition and longer-term governance to support Canterbury in the future.

And last but not least, as we recognise four years since that first big earthquake on 4 September 2010, I quote the words of the All Right? wellbeing campaign: It is All Right to feel sad or overwhelmed; but it's also All Right to feel excited about our future. 🔄

Local know-how key to restoring an inner city favourite

Some innovation from a local company based in the Selwyn district is helping restore the former Trinity Congregational Church in the central city.

The historical stone structure (circa 1875) on the corner of Worcester and Manchester streets had been operating as the Octagon Live restaurant until it was badly damaged in the earthquakes.

Part of the restoration effort will be to reduce the overall weight or mass of the structure.

Owner of the Stone Company in West Melton, Richard Lloyd, has specially designed a saw to cut through the stones that have been carefully removed from the building. The saw can be used to reduce their mass by 80 to 90 per cent while leaving the exterior or pitched face unaltered. It can also shape corner pieces of stone.

Richard Lloyd says the lower section of the building (up to about 2 metres high) will be restored on site, with injections of grout to hold the stones in place. The upper level will be



Trinity Congregational Church: a work in progress in the central city.

reinforced with a modern, steel, interior structural wall and the stones, with their mass reduced, will be placed on the outside.

"The mixture of the heavy lower area and the lighter structure above will make the building far more resistant to future earthquake events," says Richard Lloyd.

"When it's finished, people won't be able to tell the difference between what has been cut and replaced and what is original solid stone." 🔄

Knox Church restoration well underway

Work to restore the Knox Presbyterian Church in central Christchurch will see it meet 100 per cent of the Building Code and hopefully stand for another 100 years.

The building on the corner of Victoria Street and Bealey Avenue, which dates back to about 1902, survived the earthquakes essentially due to its extensive timber structure inside. Many of the exterior brick walls collapsed but the heritage wooden interior remained almost entirely intact.

Restoration work began in earnest late last year when the first four of fourteen precast, post-tensioned buttresses were lifted over the roof of the church before being connected to the timber structure. The roof has now also been completed as part of the \$5.5 million rebuild project.

Director of Wilkie and Bruce Architects, Alun Wilkie, says Aurecon has designed a resilient structure thanks to a thick raft foundation, new lightweight cladding and the post-tensioned buttresses. All of these features will allow the structure to move and flex in a major earthquake before returning to its original position.



Artist's impression: Knox Church; restored and rebuilt.

"I think some people may struggle with the fusion of new and old but that is a function of the earthquakes. They have decimated the exterior to a point where it had to be rebuilt but the interior is being retained. It's a wonderful story of how a surviving heritage interior can be rebuilt for another 100 years."

The official opening of the building is planned for the end of November. 🔄

**FUTURE
CHRISTCHURCH
GREATER CANTERBURY**

You can find out more about these and other stories of the recovery in *Christchurch - The Ever Evolving City* feature documentary which bears witness to the remarkable transformation taking place in greater Christchurch. It is available for viewing on the Future Christchurch website: www.futurechristchurch.co.nz





The Smith Cranes team delivers an 8.5 tonne Port Hills rock to its new Christchurch Chinese Church home.

Quake rock becomes community symbol for Chinese Church

It was a meeting of two rocks. One was the typical volcanic sort, weighing 8.5 tonnes, which had sat happily on a Morgans Valley hillside for a few million years before being abruptly dislodged on 22 February 2011. The other was a 'rock' of its community – the Christchurch Chinese Church in Burnside – which has provided support, guidance and comfort for the past 25 years.

With help from CERA's Port Hills team and Smith Cranes, the two very different rocks were brought together. The result is a new installation to mark the anniversary of the church's 1989 founding and to remember the 4 September 2010 earthquake.

"We wanted to do something for the fourth anniversary of the earthquake," says the church's senior pastor,

Jack Stuart. "An effort from us to say we care about Christchurch and we're part of your community."

All they needed was the right rock. "We contacted the Christchurch City Council, and they put us on to CERA."

CERA's Port Hills team worked with Pastor Stuart to find a rock that was suitable in terms of its location, weight and appearance.

The Smith Cranes team lent their time, resources and expertise to move the rock more than 16 kilometres across Christchurch.

Eventually the rock was settled into place in its new garden home on Greers Road, where it can accompany the church for its next 25 years and beyond. ♻️



Roger Sutton
CERA Chief Executive

Working with you

With the recovery now moving apace, I am keen that CERA continues to work with you and your communities over the next year and a half. Despite the public engagement processes we have already undertaken in relation to projects such as the Recovery Strategy for Greater Christchurch, the Accessible City transport plan and, more recently, the Canterbury Earthquake Memorial, I am conscious that we have had to move quickly on some projects, through necessity. This, I understand, has left some of you feeling you haven't been as involved as you want to be or that you need more information about the recovery. Please be assured that I am always looking at how we can improve the way we do things here at CERA and how we can make sure we keep you informed as well as hear from you.

In the last month we have started the public engagement process around the future use of red zone land in Kaiapoi and Pines/Kairaki Beach in Waimakariri, a total area of around one square kilometre. Canvas is an opportunity for you to tell us how you would shape the future of Waimakariri's red zones, what you think this land should be used for and why this is important to you. We have already received tons of good ideas on the Canvas website.

In considering the future of these areas, it will be important to look back to when they were settled and their significance to those who first lived there. Kaiapoi and Pines/Kairaki Beach have long been important sites for Māori and have fascinating histories. They also mean a great deal to those who have lived there more recently.

The ideas from this initial public engagement will help us to work out what the next steps are in collaboration with our strategic partners. So watch out for more information on this. We also hope to get the public engagement process underway soon for the red zone areas in Christchurch. We will let you know once this process is underway.

As CERA works closely with the local authorities across Canterbury, I would also encourage you to keep an eye out for opportunities to provide them with feedback on current projects. For instance, for those who travel regularly into the city centre, I note that Christchurch City Council has started looking for feedback on the proposed transport network changes in the central city, and stage 1 of its District Plan review. Keep your eye on the Council's website (www.ccc.govt.nz/haveyoursay) for opportunities to comment on these various proposals.

Please remember that you can contact CERA if you need information on current projects and planning. And watch out for information on our website www.cera.govt.nz as this provides you with repair and rebuild news along with information about the ongoing support and assistance available.

Kia kaha. ♻️

Botanic Gardens favourites return

Spring in the Christchurch Botanic Gardens will be an even greater feast for the eyes with the re-opening of a number of popular glasshouses and conservatories following earthquake repairs. Fern, Townend, Cunningham and Foweraker Houses now meet the New Building Standard and have been re-opened to the public.

The Garrick and Gilpin houses are currently being outfitted with new plant collections and will re-open in the near future. ♻️

(Below and right) Cunningham House, which was first opened in 1923, has been re-opened after earthquake repairs and upgrading.



New shared spaces on the way for the central city

Physical work has begun on elements of Te Papa Ōtākaro/Avon River Precinct that will embody a whole new approach to how people and vehicles share space in the Christchurch central city.

The simultaneous development of the Terraces project and the new City Promenade will see the area of Oxford Terrace in front of the Retail Precinct become a hive of activity.

The Terraces project will connect the river with the city. It will develop the river bank into a vibrant, social space and be complemented by river revitalisation work.

Construction work will also span the road and footpaths as part of the first phase of work on the new City Promenade.

The Promenade will be a shared zone: a place where pedestrians have priority but that will also accommodate slow-moving cars, the tramway, cyclists, outdoor dining, shops and entertainment.

"This will change the way we relate to the river through the central city and be the focus of city life in the future," says Christchurch Central Development Unit Director Warwick Isaacs.

What is involved in the Terraces project?

A grand set of terraces will allow people to comfortably sit and enjoy being close to the river. Flights of broad steps, ramps and decks will provide access to the river's edge.

The main set of terraces will be located directly in front of Antony Gough's private development (The Terrace) which is under construction. This area will become one of the central informal gathering places in Christchurch – offering a sunny, sheltered area during the day and seating for viewing night-time performances and events. Bars and hospitality outlets are also being developed nearby in the Retail Precinct.

Other smaller terraced areas providing access down to the water's edge will be built on both sides of the river between Hereford Street and Worcester Boulevard, and the project ties in with the restoration of the Bridge of Remembrance.

What is the new City Promenade?

The Promenade will be a new type of street for Christchurch. It will be a shared zone with special rules where cars have to give way to pedestrians and cyclists and the top speed is 10 kilometres per hour.



Artist's impression: Pedestrians and cyclists share the new City Promenade on Oxford Terrace.

"The Promenade is designed to slow us down, encourage us to enjoy the environment of the rejuvenated Ōtākaro/Avon River, browse shop fronts and connect with everything else on offer in the city," says Development Director for the Precinct Rob Kerr.

"It's a whole new concept of shared space to reflect our community desire for a compact, vibrant, pedestrian-focused city."

The Promenade will eventually stretch along the east bank of the Ōtākaro/Avon River from Christchurch Hospital to the Margaret Mahy Family Playground.

The Terraces - construction step-by-step

- SCIRT is currently replacing earthquake-damaged wastewater pipes on Oxford Terrace.
- Downer is realigning the tram tracks.

- The Terraces promenade is expected to be complete for the ICC Cricket World Cup (Feb 2015).
- SCIRT is undertaking structural repairs on the Bridge of Remembrance that are scheduled to be complete for Anzac Day (April 2015).
- The bridge will be repaved later in 2015 as part of the Terraces project. 🔄



**Christchurch Central
Development Unit**

Te Uepū Whakabiato

**AVON RIVER
PRECINCT
TE PAPA
ŌTĀKARO**

WALK BY THE RIVER

Sunday 28th Sept '14

Celebrate World Rivers Day at the evolving and inspiring Te Papa Ōtākaro/Avon River Precinct. Join family or friends on a guided walk hosted by members of the Te Papa Ōtākaro/Avon River Precinct project team.

Complete the 'riverside quiz' and enter the draw to win an amazing family prize package.

When: Guided walks depart on the hour from 10am-2pm, or pick up a map for the self-guided walk

Route: Departs from Antigua Boat Sheds and finishes at the Future Christchurch Showcase Re:START Mall, via Victoria Square

Length: 2.5 km (approx. 1hr)

Cost: Free

CERA
Canterbury Earthquake
Recovery Authority

Christchurch
City Council

Environment
Canterbury
Regional Council

UPDATE FROM HOUSING NEW ZEALAND (HNZ)

Modern new state homes for greater Christchurch

A massive new builds programme by Housing New Zealand across greater Christchurch is redefining state housing.

Modern, new, warm and healthy houses are being constructed across the city as part of Housing New Zealand's comprehensive building programme that will see 700 new homes built by the end of next year.

This ambitious project is already creating fantastic results for tenants with many already enjoying the new, safe, comfortable, warm environment a new home provides.

Many more Housing New Zealand tenants will benefit from this programme over the next 16 months as hundreds of new homes are built.

The programme involves several construction companies and there are clear and visible signs of activity all over the city.

From Parklands to Papanui, Riccarton to Rangiora, St Albans to Shirley and Aranui to Addington – Housing

New Zealand will be building the 21st century version of a state home. These properties are energy efficient, warm, dry and modern and built to very high standards. They include full insulation, patios and courtyards and are designed to blend in with other new houses.

Different types of homes are being built for people with different needs, ranging from large families to single adults as well as those with access and other specific requirements. Proximity to bus routes, schools, medical centres, jobs and shopping precincts are all factors in choosing locations for new houses.

Housing New Zealand's Canterbury Earthquake Recovery Programme General Manager Paul Commons says the new builds programme will re-generate not only Housing New Zealand's Canterbury housing stocks but help add value to new and existing communities.

Housing New Zealand's investment won't stop at the end of 2015 – it plans to invest more than \$1.2 billion into the Canterbury region over the next decade and new, warm, healthy homes will be a major focus of that work. ☺



This new four-bedroom house in Rose St, Somerfield, is typical of the new homes being built across Christchurch by Housing New Zealand.



This new two-bedroom house opened earlier this year in Morrison Avenue, Papanui.

BRIEFS

Hundreds submit ideas for Earthquake Memorial

The call for Ideas to Remember on the design of the new Canterbury Earthquake Memorial closed late last month and 339 submissions were received, half of which were from New Zealand, and half from 37 countries around the world.

The Canterbury Earthquake Memorial will be a place to honour those who died or were injured on 22 February 2011, and acknowledge the shared and traumatic experience of the 2010–2011 Canterbury earthquake sequence. It will be located between Montreal Street and Rhododendron Island as part of Te Papa Ōtākaro/Avon River Precinct.

It is anticipated the shortlisted designs will be finalised in late October with a public display early next year. The Memorial is timetabled to open in February 2016.

Second big tenant for Innovation Precinct

A second key tenant has committed to setting up in the Innovation Precinct, marking further progress with this central city anchor project.

Clothing and outdoor adventure retailer Kathmandu has announced that its new worldwide head office will be stationed in the Precinct. The new office will house 150 Kathmandu staff, including its product design, systems and online development teams.

The head office building has been designed to achieve a 5 green star rating from the New Zealand Green Building Council. The company expects to move to the purpose-built, three-storey building on the corner of Tuam and Madras streets in early 2016.

This decision follows on from Vodafone's announcement in early June that it will set up its \$50 million South Island headquarters in the Innovation Precinct. ☺



Artist's impression: Kathmandu's new worldwide head office planned for the Christchurch central city.

Are you In The Know?

In the Know is a question-and-answer website that makes it easier and faster for residents of greater Christchurch to get information about the residential rebuild and repair process.

Since the website launched in March, thousands of people have visited it and more than 300 new questions have been submitted.

Here is an example of the kind of question and answer you will find there.

Question: What is a 'VO' (EQC/EQR term)? In what circumstances would a 'VO' be used? Why can't EQC/EQR determine the whole repair reinstatement strategy of the house before work commences?

EQC advises: VO is an acronym for a Variation Order. This means a variation to the Works Order is issued to contractors for the repair work.

In the Canterbury Home Repair Programme all the repairs are based on a Scope of Works which is finalised after the scope meeting with the home owner and contractor.

After the 'scope' the contractor will submit a quote and repair plan to the hub. Once this is approved by EQC a Works Order will be issued to the contractor by Fletcher EQR and the start date will be finalised. Sometimes it becomes necessary to change the repair strategy during the repair. These changes are called variations and must also be approved by EQC.

There is information about this in the What to Expect booklet about the repair process which is available on Fletcher EQR's website www.eqr.co.nz and also on www.eqc.govt.nz

To find out more, go to: www.intheknow.org.nz ☺

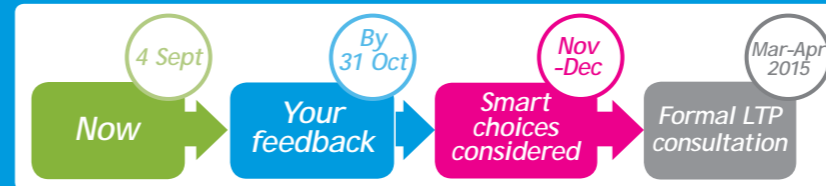


Our City. Our Future.

The Christchurch City Council is encouraging residents to have their say about the Long Term Plan that will shape the city over the next 10 years and beyond.

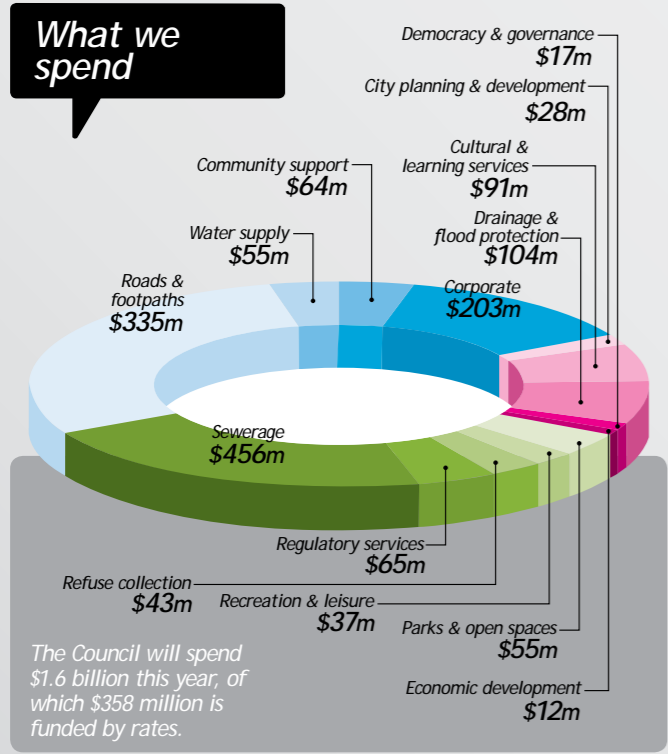
Our City. Our Future is a chance for everyone in Christchurch to help set priorities for the Long Term Plan - what the Council does, when it happens and how to pay for it.

Go online at yourvoice.ccc.govt.nz or visit a Council library or service centre to find out how to get involved in the planning process.



Register online at yourvoice.ccc.govt.nz

We need your help making some smart choices



What we are committed to

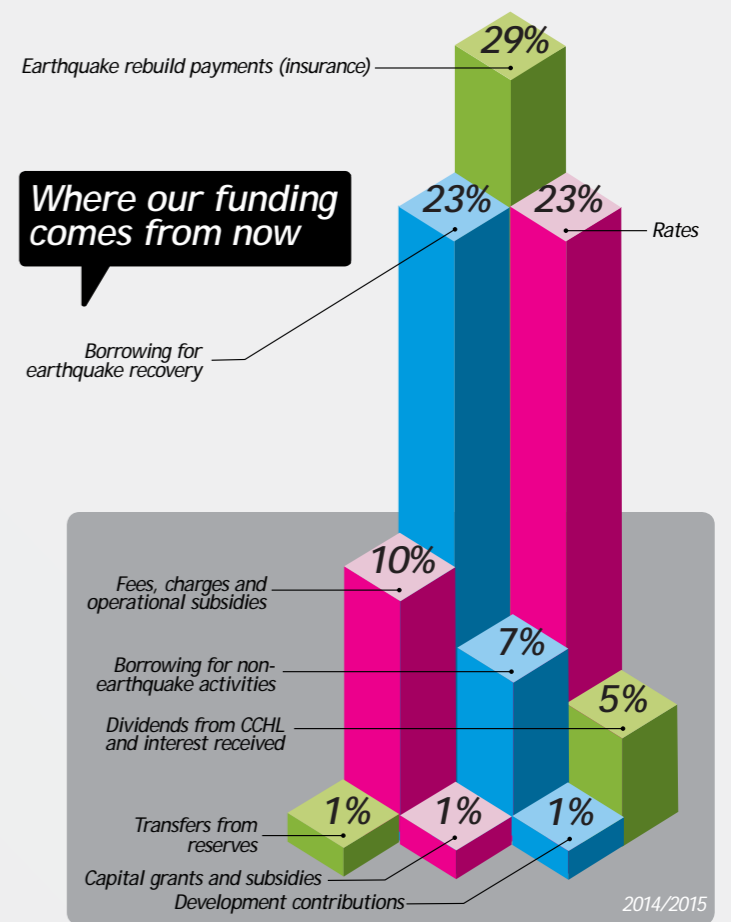
The Cost Sharing Agreement with the Crown commits us to the following projects

Project	CCC Contribution (\$m)	Crown contribution incl. land(\$m)	Project delivery
The Frame	\$0	\$481	Crown
Convention Centre Precinct	\$0	\$284	Crown
The Stadium	\$253	\$37	Crown
Metro Sports Facility	\$147	\$70	Crown/CCC
Bus Interchange	\$40	\$51	Crown
Avon River Precinct	\$6	\$89	Crown
The Square	\$5	\$5	Crown/CCC
Performing Arts Precinct	\$158 inc. Town Hall	\$8	Crown/CCC
Central Library	\$60	\$19	CCC
Car parking	\$70	\$0	CCC/Private
Transport Plan	\$27	\$44	Crown/CCC
Horizontal Infrastructure	\$1.14b	\$1.8b	Crown/CCC
Total	\$1.9 billion	\$2.9 billion	

There is no simple solution

Final costs will almost certainly be significantly more and do not include operating costs.

Where our funding comes from now



Could we increase rates?

- If we make no changes we face annual rate increases of 25% to 30% annually for a couple of years.
- Keeping rates increases to under 10% is possible if we budget carefully, reduce services, delay some projects, and find other sources of funding.
- The demolition of thousands of damaged buildings led to a big drop in the amount the Council receives in rates. As a result we borrowed more money to maintain services which is unsustainable.
- Our rates are moderate compared with our neighbouring and other metro councils.

Could we reduce services?

- The Council intends saving 2% annually on operational spending over the next three years.
- This could result in a reduction in services.
- The Council could consider changes to service levels, such as opening hours for facilities such as libraries and recreation and sport centres
- Or we could reduce the amount we spend on roads, economic development and events.

Could we delay things?

- The Council is committed to spending about \$783 million on Central City anchor projects and at least \$1.14 billion on fixing roads and pipes, a figure which could yet rise further.
- The Crown would have to agree to any changes to major projects, such as the stadium.
- We have more than \$100 million worth of swimming pools, libraries and other community facilities to repair and rebuild.
- We could hold back on replacing or completing repairs until we can afford them, but old or damaged facilities can be expensive to maintain.

Could we borrow more?

- Borrowing gives us fast access to funds, which allows us to get on with the rebuild.
- We borrow mainly through the Local Government Funding Agency which sets limits on how much we can borrow based largely on our ratio of net debt to revenue.
- If we don't make changes, we will reach our debt limit by 2017.
- We are already paying \$60 million per year in interest on our existing debt and we borrow more than a third of that.

Could we sell assets?

- The Council's commercial arm Christchurch City Holdings Ltd (CCHL) owns assets worth \$1.5 billion.
- These assets include Christchurch International Airport, the Lyttelton Port Company, Orion, City Care, Red Bus and Enable.
- We could sell some of our shares while maintaining control through a majority shareholding, or we could sell some individual assets partially or in full.
- This would reduce debt and interest costs, but could reduce our income from dividends.

Could we improve returns from assets?

- Over the past 10 years CCHL has returned \$457 million in dividends and capital repayments to the Council.
- There may be potential for our companies to pay higher dividends.
- There may be potential for our companies to take on more debt, but this could have an impact on dividends.

We need to look at all available options, and choose the combination that best meets the city's needs.



\$800-\$900 million
Shortfall 2017-19



Tourism recovery in greater Christchurch

International tourists have been the major contributors to Christchurch's tourism recovery over the past six months, with the total number of international guest nights in the city rising by 12 per cent. This indicates the benefit of the ongoing reinstatement of commercial accommodation in the city and the stronger-than-expected organic tourism growth from northern hemisphere markets over the 2013/14 summer. Our biggest visitor market, Australia, is proving the hardest to recover.

Christchurch still, however, has a long way to go to recover its tourism sector to pre-quake levels, with visitor nights still 40 per cent below the 2010 level.

In the current phase of recovery the tourism sector is strongly focused on:

1. improving the quality of the visitor experience in the inner city spaces
2. re-growing lost capacity on air services to/from Australia
3. developing more backpacker accommodation capacity in the inner city
4. encouraging new activity tourism businesses to set up in central Christchurch.

Tim Hunter

– Chief Executive Christchurch & Canterbury Tourism

International recognition

Christchurch & Canterbury Tourism has hosted a record number of international media in Christchurch this year.

The *New York Times* named Christchurch number 2 in 52 places to go in 2014:

"... the city is experiencing a rebirth with creativity and wit — thanks to the ingenuity of its hardy residents — and is welcoming tourists back again."

Christchurch's creative and innovative buzz really impresses our international and domestic visitors. There are some fantastic shops, cafés and restaurants to enjoy, including post-quake ventures such as the Tannery and the recently opened Strange's Lane hospitality hub. All the city's main tourist attractions are open.

Visitor Experience Research

Christchurch & Canterbury Tourism conducted Visitor Experience Research (Angus & Associates, March 2014) speaking with 1,000 visitors in Christchurch over summer.



Strange's Lane hospitality hub (corner of High and Lichfield streets): the latest new development for Christchurch's rebounding entertainment scene.

Overall, visitors were highly satisfied with their experience in Christchurch, with an average rating of 8.5 out of 10. Although they also indicated it would benefit from having more to see and do.

Visitors believed the city has a generally positive outlook. The highest outlook scores were awarded to the positivity of the people (8.1 out of 10) and feelings of optimism (7.7 out of 10).

International visitors were most satisfied with the city's parks (8.7 out of 10) and punting on Ōtākaro/Avon River (8.7 out of 10).

Australian visitors most frequently identified Re:START Mall and Botanic Gardens and Parks as the most enjoyed aspects of their visit.

New hotels underway

- Hotel Montreal is a new 27-room, boutique, 5-star hotel scheduled for opening on Montreal Street in late 2014.
- Ramada Suites Christchurch (Wyndham Hotel Group) is underway on Tuam Street. The 4-star, 44-apartment, boutique hotel will open in late 2014 or early 2015.
- All Seasons Hotel, Cashel Street is to re-open in early 2015, with 270 compact rooms.
- Sudima Hotel Christchurch Airport is building a \$20 million extension for completion in mid 2015, which will bring it up to 248 rooms, including a three-storey, 90-room, 4.5-star executive wing and a conference wing.

Christchurch Convention Centre Precinct

Confirmation of master-planning and development of the new Convention Centre mean we can now actively pursue large international conferences for Christchurch.

Christchurch & Canterbury Convention Bureau already has received significant interest, with some people wanting to book events at least three years out.

"Now we have the certainty to go out and sell Christchurch on this scale," says Bureau Manager Caroline Blanchfield.

"The new venue will tick all the boxes for conference organisers and fit what the convention industry is looking for in New Zealand.

"It is going to be versatile and connected to a vibrant city centre with major hotel development attached to it. It's exactly what we are after and gives us the go-ahead to ramp up our marketing of the city," she says.

Christchurch & Canterbury Convention Bureau is working closely with Tourism New Zealand to attract new international conferences here. In recent weeks the city has won two international conference bids. First, Christchurch will host 80 international delegates to the Environmental Criminology and Crime Analysis Symposium in 2015. Then the 20th Pacific Association of Quantity Surveyors Congress will bring 400 delegates to Christchurch in May 2016.

Roll on summer...

Tramway extension

A second tramway loop along Oxford Terrace, down Cashel Mall, High and Colombo streets to Cathedral Square is to be open by February 2015, in time for ICC Cricket World Cup 2015.

International air capacity

Trans-Tasman capacity will increase by 11 per cent this summer 2014/15. More than 60,000 new seats will be available on routes from Brisbane, Sydney and Melbourne.

Air New Zealand's direct Perth to Christchurch service will commence again in late 2014 and run until April 2015.

Singapore Airlines will operate 18 supplementary flights from 1 December 2014 through to 28 January 2015. During this period, Singapore Airlines will increase its daily service to nine flights a week, adding 5,000 additional seats.

A new China Airlines service from Taiwan to Christchurch via Sydney will operate three return flights a week for an initial summer season from 2 December 2014 to 1 March 2015.

In the past year, 5.7 million passengers have passed through Christchurch Airport, making it New Zealand's second largest airport. That is an increase of 200,000 visitors on the previous year. ☺

Winter Chill – young people getting bold in the cold



The Broods on-stage to a sold-out crowd.



Young performers celebrating the fun at Rowley's Got Talent.



Creative fashion on display on the Steampunk Runway.

The Winter Chill event series has kicked off, with music gigs, art exhibitions and fashion shows just some of the 'cool' initiatives young people have been able to go to this winter.

The Broods under-18 concert was a huge hit. The Christchurch Youth Council and WAIYouth organised a fantastic night for 500 young people who came from all over the region. Despite a touch of cold (or winter chill), the band sounded great and the sold-out crowd sang along to their favourites with much energy and enthusiasm.

Steampunk Runway fashion catwalk proved to be a vibrant, exciting event. South Christchurch Library was transformed and the creativity of the young competitors was outstanding. Many members of the audience got into the spirit of things by donning steampunk attire themselves.

As the community turned out in force to enjoy Rowley's Got Talent, more people arrived than the hall could hold. The 'I Can't Believe It' dance crew's moves stole the show and won them the people's choice award and first prize – although the Kidsfirst littlies were close to seizing that title. Big ups to all the singers too – the crowd loved you.

These are all events put on by young people for young people aimed at 12 to 24 year olds. Winter Chill is made possible with funding from the Ministry of Youth Development's new Canterbury Youth Initiatives Fund and a significant complementary contribution from Fletcher Building. Sports, arts, music, creative events – we've got it all! 'Like' us on Facebook to see the full line-up:

www.facebook.com/winterchillchch



WINTER CHILL



Artist's impression: Hagley Oval, proposed aerial view of game day.



Artist's impression: North view perspective.

Hagley Oval on the front foot

A private ceremony this month will celebrate the official opening of the Hagley Pavilion and mark a significant milestone for the Hagley Oval ahead of the ICC Cricket World Cup 2015.

Construction began on the Pavilion late last year and it was completed this month.

The Pavilion provides players' changing rooms and dining, and media and members' lounge viewing facilities. A new international-standard cricket block has been developed on the Oval and first-class cricket has already been played there.

A newly developed outfield has also been completed and a picket fence will encircle the ground.

A public opening day is planned for October so that members of the greater Christchurch community can view the grounds and new facilities.

Hagley Oval will host New Zealand's first home Boxing Day Test in more than a decade, and the first ever in the

South Island, when the Black Caps play Sri Lanka from 26 to 30 December 2014. Shortly afterwards, on Sunday 11 January 2015, the two sides will play a one-day international on the grounds.

The Oval will host New Zealand versus Sri Lanka at the opening game of the Cricket World Cup tournament on Valentine's Day 14 February 2015.

To find out more, go to: www.hagleyoval.co.nz



Check how proposed rule changes could affect your property

Christchurch property owners can check how proposed changes to rules on land use might affect them.

Christchurch City Council is inviting submissions on the stage one chapters of its Proposed Replacement District Plan.

The District Plan sets the district's long-term land use policy framework, as well as the rules to guide development. It determines things like where residential areas, businesses and different activities can occur. It regulates what you can do with your property and what your neighbours can do with theirs.

"The review we're doing now gives us the opportunity to look at all aspects of the plan to see what has worked well and what we'd like to change," says Chief Planning Officer Mike Theelen.

"It also means we can look at everything we've learnt since the earthquakes and decide what we want to do in future to help protect people, property and infrastructure from the impacts of natural hazards. We need to put that new information to good use."

As part of the review, the Council is proposing hazard management areas with rules affecting future activities and development. These will apply in areas at risk from cliff hazard, rockfall, mass movement and flooding. The proposals won't affect existing use rights but could limit future development on sites in hazard management areas.

"We want to help people understand what the plan means for their property. If you don't understand what the plan might mean to you, please call us on **03 941 8999**," says Mike Theelen.

To find out how proposals in the Christchurch City Council Replacement District Plan Review will affect them, people can visit www.proposeddistrictplan.ccc.govt.nz and look up their property. The property search function can be used for any property in the district. A video on the website shows how to use the plan. Printed copies and maps are available for viewing at all Council libraries and service centres.

Submissions close at 5pm on Wednesday 8 October 2014. The Replacement District Plan will be completed by April 2016. ♻️

Linwood Village revitalised

Over the past few weeks Linwood locals have been witnessing the transformation of their village.

The installation of street planters, rose arbours, play balls instead of benches to sit on, solar cubes to light up the pavement at night and pavement painting is intended to bring vitality and interest to the village.

Doris Lusk Park is also receiving a spruce-up with the old toilet block having been demolished and a new toilet being installed. The landscaping has been upgraded with new trees planted in the existing tree guards on Stanmore Road. A drinking fountain and cycle fix-it stand have also been installed.

The project has been a collaboration between Christchurch City Council and the local community who had very definite ideas on how they wanted their village to look. Bright, colourful and fun are the characteristics they asked for.

These temporary works are designed to make improvements to the streetscape until more permanent rebuild and repair work gets underway.

The project is part of the Transitional City Programme. The intention is to introduce colour, creativity and innovation to the area. ♻️



Young people enjoy the new Linwood Village transitional street works.



Fletcher EQR and EQC staff on site during home repair.

EQC and Fletcher EQR working together on final home repairs

The Earthquake Commission and Fletcher EQR will continue working together to the end of April 2015 to complete home repairs in the Canterbury Home Repair Programme (CHRP).

The CHRP is EQC's repair programme for damaged homes with a repair cost of more than \$15,000 (+ GST) but less than the EQC cap of \$100,000 (+ GST). Fletcher EQR manages these home repairs on EQC's behalf, including by:

- obtaining the building consents and carrying out the design work
- organising the physical repairs and monitoring quality
- ensuring the work complies with the Building Act 2004 and relevant codes
- protecting from cost escalation
- ensuring any defects that are identified within three months of completion are remedied.

EQC expects to complete most repairs this year. However, it has previously indicated that between 2,000 and 3,000 repairs may need to be completed next year.

Most of these remaining claims relate to instances where the home owner has deferred the repair, possibly due to challenging personal circumstances. EQC is working with these customers and other agencies to discuss their options and how to help progress these claims.

"We have always acknowledged that our target of completing all repairs by the end of 2014 was going to be a stretch, so it is pleasing that the numbers outstanding will be relatively small in relation to the entire home repair programme," says EQC Chief Executive Ian Simpson.

"I would like to emphasise that we will complete repairs and that we will not be cash settling in order to achieve our goal.

"The good news is that customers can have confidence in booking in their repairs as the majority of the 10,000 or so claims to go will be completed this year," says Mr Simpson. ♻️

UPDATE FROM SELWYN DISTRICT COUNCIL



Move in day: (left to right) Melissa and Ken Brand, holding their new set of house keys, with Selwyn District Council's Community Recovery Support Officer Jenny Harkerss.

New home for Prebbleton family

After almost four years of waiting and months living in a cold, damp flat because their home had suffered earthquake damage, the Brand family from Prebbleton are pleased to have moved into a new home.

Supporting them along the way has been Jenny Harkerss, Selwyn District Council's Community Recovery Support Officer, who is also helping many other Selwyn families with their earthquake-related problems.

"Jenny has been with us right from the word go almost," says Melissa Brand. "She really does go the extra mile and it's nice to have someone make the whole experience of dealing with insurance and builders a little easier."

Ken and Melissa Brand had been living in a flat – essentially a run-down shed which was very cold and damp – for seven months while the rebuild was completed. "We try not to complain but it hasn't been a pleasant experience and we are extremely happy to be moving into our newly built home," says Melissa Brand.

Since the earthquakes, Jenny Harkerss has been in contact with more than 400 families. She is currently supporting 32 families – most of whom are waiting for repairs to be completed. Mrs Harkerss has been helping people to resolve their earthquake claims over the past four years so she has a good understanding of the processes and systems that organisations such as the Earthquake Commission and insurance companies use and is able to provide advice on how people can progress their claims.

"My days are varied as I provide support for all sorts of earthquake-related issues. Generally I provide advice on the repairing and rebuilding process and how to work with the companies involved in this," says Mrs Harkerss.

Mrs Harkerss says treating people with respect is very important, as families may often feel like they are being unfairly treated or not fully informed in the process. "I hope that by being a support person who can offer advice, I can walk alongside people on the road to recovery."

Jenny Harkerss is available to help anyone in the Selwyn district who may need help with their earthquake-related issues. She can be contacted on **0274 352 594** or at **jenny.harkerss@selwyn.govt.nz**

The Selwyn Earthquake Relief Fund was recently transferred into the Mayoral Relief Fund and is still available to help people who were living in Selwyn during the earthquakes and are experiencing hardship as a result of them. For more information about the fund, phone **03 347 2830**.



Phone: (03) 347 2800
Web: www.selwyn.govt.nz

UPDATE FROM WAIMAKARIRI DISTRICT COUNCIL

Rangiora's town centre is starting to hum

The look of Rangiora's town centre landscape has been evolving over recent months and a walk along the High Street reveals a changing scene that is set to transform still more over the next 12 to 18 months.

The demolition of the Farmers building is finished and site clearance is completed, with land testing and surveying underway in preparation for the start of construction of the new building in early 2015. The fences that previously stood on the roadside along the Farmers site area on High and Percival streets are now back to the kerbside and a key area of car parking has been restored, much to the delight of local businesses and their customers.

Construction projects are about to get underway at 206–210 High Street, which will see a new two-level building with retail ground floor and first-level offices. The 'North of High' project at 172–188 High Street, a collaboration between Waimakariri District Council and private developers, is also about to drive its first foundation peg into the ground, and these buildings and the new laneway will be open in mid 2015.

The installation of a 6-metre container on High Street's footpath has also allowed the removal of fences that were in place alongside the building at 168 High Street. Pedestrians will now be able to move along the footpath, still safely protected from any risk.

More fences will soon be removed, and car parking restored outside the Junction Hotel, as the façade retention and strengthening work is completed.

Work is about to commence on the roading realignment and installation of traffic lights at the intersection of High, Ivory and Ashley streets. This project will be completed by April 2015, and will include the first stage, to Victoria Street, of restoring two-way traffic on High Street.

At the other end of High Street, the earthquake strengthening and extensions for the Rangiora Town Hall are progressing well, with an opening planned for February 2015.

As they say, "Watch this space" ... 🔄



WAIMAKARIRI
DISTRICT COUNCIL

Phone: (03) 311 8900
Web: waimakariri.govt.nz

Locals check out progress with Lyttelton's Albion Square

A recent open event at Albion Square in Lyttelton provided residents an opportunity to view some of the work underway by Christchurch City Council.

The square was open to the public for three hours on Saturday 30 August, giving people the chance to chat with the project team and view the site's progress. About 400 locals attended throughout the day, with feedback positive overall.

The new square will feature a carved entranceway, stage and terraces, children's play areas, the Lyttelton War Memorial Cenotaph and the historic 160-year-old St Joseph's Catholic Church bell.

Concrete ground works and outdoor framing have been completed for both the lower and upper terrace, and construction is progressing on the stage, with timber poles and decking installed.

Local materials have been used in the square's construction, including timber beams from the wharf, and paving designs are based on a flounder weaving pattern reflecting Raupaki and Lyttelton Harbour.

Albion Square is scheduled for completion by late October. 🔄



Work in progress: Albion Square on its way to becoming a focal point for Lyttelton locals.

Update from Stronger Christchurch Infrastructure Rebuild Team (SCIRT)

Latest progress

SCIRT is now halfway through the city-wide programme!

- In August, SCIRT reached the halfway mark for the whole SCIRT infrastructure rebuild programme.
- SCIRT is responsible for repairing and rebuilding Christchurch's earthquake-damaged horizontal infrastructure. This includes water, wastewater and stormwater pipes and roads, bridges and retaining walls.
- So far, SCIRT has replaced or repaired:
 - 306 kilometres of wastewater pipe
 - 14 kilometres of stormwater pipe
 - 48 kilometres of freshwater pipe
 - 355,433 square metres of road
 - 94 bridges/culverts
 - 48 retaining walls.
- SCIRT's programme of work is the biggest civil engineering challenge in New Zealand's history.
- For more statistics on latest progress, see SCIRT's website www.strongerchristchurch.govt.nz

50% of the whole SCIRT programme is complete

What's happening in the central city?

- SCIRT is 68% of the way through its work in the central city.
- Most of SCIRT's central city work will be completed in 2014, with structural repairs on bridges and some road repairs going into 2015. By the end of the year SCIRT expects to be around 90% of the way through its central city work.
- With the most intense period of SCIRT's central city programme now behind us, you should start to experience fewer delays and detours from its works in the central city.
- SCIRT needed to get in early as its mostly 'below-ground' work is timed to support the 'above-ground' anchor projects and developments.
- For more information about SCIRT's work in the central city, go to www.strongerchristchurch.govt.nz and click on the 'Central City Rebuild' icon.

68% of Central City work is complete

Work starting on Kahu Road late September

A major traffic detour will be in place on Kahu Road in Riccarton from 22 September, for around eight weeks. SCIRT's McConnell Dowell team is repairing the Kahu Road bridge over the Avon River past Christchurch Boys' High School, near Riccarton Bush.

- Drivers will be detoured at the Straven Road/Kilmarnock St intersection and on the university side at Clyde/Creyke Road/Kotare St. Electronic signs will warn of the closure ahead of time.
- Pedestrians and cyclists will have access across the bridge and along Kahu Road.
- People living on Kahu Road will be able to access their homes by the side streets – Titoki/Rimu/Rata/Kauri and Puriri/Totara/Weka/Roa/Tui streets. The Kahu Road entrances of Christchurch Boys' High School will be open.
- Riccarton Market, Riccarton House and car park and Riccarton Bush access will be via Titoki Street.

Please allow extra time when travelling through this area. Thank you for your patience, while this important piece of infrastructure is repaired.

For further information, visit: www.strongerchristchurch.govt.nz



Phone: (03) 941 8999
Email: info@scirt.co.nz
Web: www.strongerchristchurch.govt.nz
Twitter: @SCIRT_info



A worksite with a view - Lee Purves of SCIRT's Fletcher team working at the Soleares Avenue site.

Bring on the cars! Soleares Ave open to traffic again

Soleares Avenue, Mt Pleasant re-opened to traffic earlier this month, after SCIRT's Fletcher team spent 10 months working on a major rock stabilisation project.

Major construction work was needed on Soleares Avenue following the earthquakes to stabilise the rock face using rock anchors. Other repair work included reinstatement of the earthquake-damaged accessway to several houses, which involved installing a bridge structure with concrete columns for support. New underground services were also installed along the accessway in a new service trench.

The project involved an impressive:

- 260 rock anchors
- 850 square metres of high-tensile rock mesh to prevent rockfall in a future seismic event
- 8 precast concrete beams
- 5 precast concrete columns
- 250 cubic metres of concrete.

On top of the structural work, 140 metres of new wastewater main and 140 metres of Chorus cable was put in place.

Work still happening on accessway

While the road is now open again, there is still some work happening on the accessway above the road. Work on the accessway is expected to be completed in October.

"Thank you residents"

Over the whole 10-month period, a full road/traffic closure was in place. SCIRT would like to thank Soleares Avenue residents and the Mt Pleasant community for their patience, support and cooperation while this essential work was carried out.

One project finishes, another begins

SCIRT has a number of big retaining wall and wall stabilisation projects on the go in Mt Pleasant. With Soleares Avenue now open again, Mt Pleasant Road has been closed to traffic near Seamount Terrace so repairs to an earthquake-damaged retaining wall can be carried out. The work is expected to take about four months to complete.

Detours are in place: one via St Andrews Hill Road, Major Hornbrook Road and Billys Track to Mt Pleasant Road; and the other via McCormacks Bay Road and Soleares Avenue to Mt Pleasant Road. Large retaining wall and wall stabilisation repair projects have been sequenced so there will always be two or three ways to drive on and off the hill.

To find out more about the work SCIRT is currently doing in Mt Pleasant, go to www.strongerchristchurch.govt.nz



Major construction work was carried out on Soleares Avenue following the earthquakes to stabilise the rock face.