

Area-wide geotechnical information summary for CERA zoning review panel

This document contains all the area-wide geotechnical information which was considered by CERA as part of the process for making flat-land zoning decisions, and the subsequent zoning review.

The report includes mapping of ground cracking, liquefaction and lateral spreading observations, LiDAR ground elevation and vertical ground movements. At the end of the report is a summary of the area-wide geotechnical considerations and map citations. They are written in plain English where possible, but do contain technical information where this is necessary to accurately explain the nature of investigations, and the effects of the earthquakes on the land.

Green zones were declared by CERA in areas where damage can be addressed on an individual basis. Many properties in the green zone have experienced significant land and building damage. The important difference between these properties and those in the red zone is that it is possible to address this damage on an individual property-by-property basis. Technical guidance documents have been developed by Building & Housing to provide recommended processes for assessment, repair and rebuilding of homes in all parts of the green zone which have been damaged by the Canterbury earthquakes.

Red zones were declared by CERA in areas where there is area-wide damage (implying an area-wide solution) and an area-wide engineering solution to remediate the land damage would be uncertain, disruptive, not timely, nor cost effective. There was a range of land and building damage experienced across red zone areas – damage was mostly severe, but on some individual properties there may have only been minor damage. The important difference between these properties and those in the green zone is the need to address the engineering challenges faced by the wider area before individual properties can be repaired or rebuilt.

For more information on the criteria agreed by Cabinet to determine green and red zones please refer to the June 2011 Cabinet minute at <http://cera.govt.nz/cabinet-papers>

More information on the findings of the review is available on the CERA website at <http://cera.govt.nz/zoning-review>, including the following documents:

- [Cabinet Minute and Paper – Zoning Review Framework](#)
- [Cabinet Minute and Paper – Findings of the Canterbury Zoning Review Advisory Group](#)
- [Zoning Review Advisory Group minutes](#)

Further area-wide geotechnical information, including suburb-specific factsheets, is also available on the EQC website at <http://canterbury.eqc.govt.nz/news/reports>

Figure 1 – General overview, showing geotechnical information summary locations



Figure 2 – Detail of northeast Christchurch, showing geotechnical information summary locations

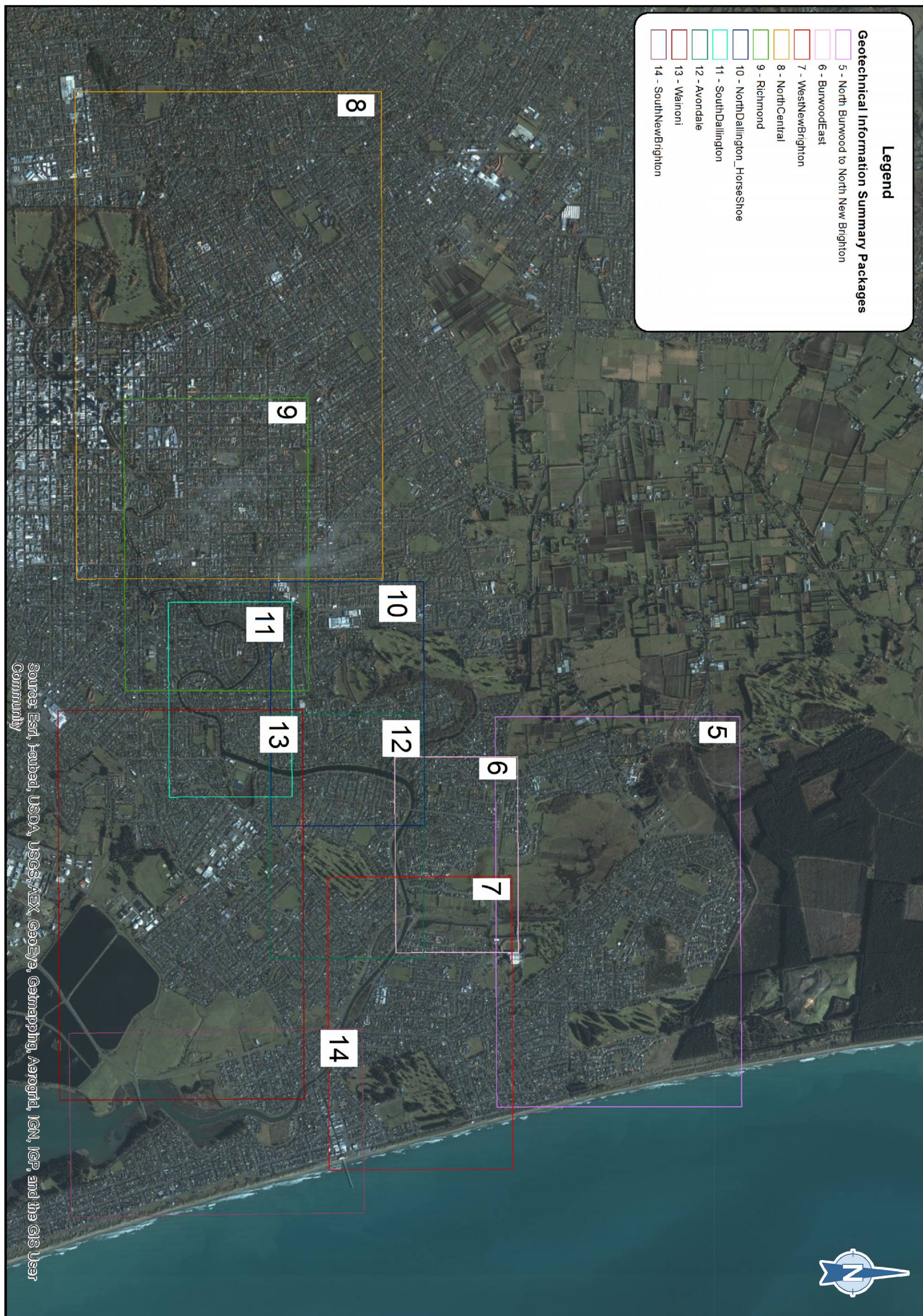


Figure 3 – General overview, showing geotechnical information summary locations and DBH Technical Categories

