

Community Forum
Private Bag 4999
Christchurch 8140

**Meeting notes for the meeting of the CERA Community Forum
Thursday 22 November 2012, 6.00pm
Canterbury Earthquake Recovery Authority, Worcester St**

Present:

Community Forum members:

Lynne Ball, Joseph Chamberlain, Belinda Charteris, Weng Kei Chen, Gill Cox, Leanne Curtis, Wendy Gilchrist, Peter Jenkins, Ruth Jones, Tom McBrearty, Trevor McIntyre, Lesley Murdoch, Jocelyn Pappill, Faye Parfitt, John Peet, Bruce Russell, Patricia Siataga, Emma Twaddell

Apologies

Leah Carr, Maria Godinet-Watts, Paul Lonsdale, Deborah McCormick, Brian Vieceli, Rachel Vogan, John Wong, Darren Wright.

Chair

Trevor McIntyre

In Attendance

Hon Amy Adams, Associate Minister for Canterbury Earthquake Recovery
Jacinda Lean, General Manager, Office of the Chief Executive, CERA
Withheld under section 9(2)(g)(i)

Jane Bryden, Advisor, Office of the Hon Gerry Brownlee

1. Sport and Recreation presentation

Vaughan Utteridge, Sport Recovery Manager, Sport Canterbury gave a presentation on "The State of Sport" (supported by Lesley Murdoch and Belinda Charteris)

- Sports and recreation has great economic and health benefits – contributes more than \$550million to the Canterbury economy.
- 9 out of 10 Cantabrians take part in some form of recreational activity.
- Earthquake impact – loss of venues; reduced participation; loss or regional, national and international events; increased barriers to participation (travel time, cost to play); impact on volunteers (loss of key people, less time).
- Participation is nearly back to pre-earthquake levels. Facility-dependent sports (eg, swimming/waterpolo, athletics, volleyball) are still struggling.
- There is an opportunity to rebuild in a way that better meets the needs of Cantabrians:
 - Broader focus to consider the needs of greater Christchurch.
 - Greater emphasis on leadership, collaboration and partnership – both within sporting codes and within communities (i.e. groups working together to build facilities, and building sporting "hubs").Examples: Avon River corridor – pulling together six flat water sports, biking and running to see how the sporting codes can work together; Selwyn – working with sporting codes to avoid duplication of facilities.

ACTION: The Forum resolved to advise the Ministers that it strongly endorses and supports the work of the sport and recreation sector, including the recommendations in Sport Canterbury's presentation.

2. Disability Sector presentation

Members of the Earthquake Disability Leadership Group - BJ Clark, Regional Facilities Manager, CCS Disability Action, Justin Muschamp, Disability Sport Co-ordinator, Halberg Trust; Karim Baradi, Co-ordinator, Disabled Persons Assembly (N.Z.) Inc – gave a presentation on the Disability Recovery Programme (supported by Ruth Jones)

- Research indicates that 1 in 4 Cantabrians have an impairment.
- Need to ensure disabled people have a part in the recovery, and are given the opportunity to make a positive contribution to economic recovery.
- It is vital to ensuring that the rebuild results in an accessible city:
 - Access is not just about wheelchairs and the sight-impaired, it also includes catering for the elderly, the temporarily injured, and parents with prams
 - Only one Women's Refuge facility in Christchurch is accessible
 - Much more cost-effective to ensure accessibility is addressed now, at the design and construction phases
 - Businesses miss out on customers if not everyone can access their building
 - Disabled tourism is a growing industry
 - CERA worked with the disability sector on development of the Christchurch Central Recovery Plan
 - Christchurch City Council are putting six consent officers on the Barrier Free course
 - The information, advice and support is out there for architects, designers and contractors to access if they choose to.
- Sport and recreation is very important to the disability sector:
 - Need to ensure that sport and recreation is available to all people with disabilities
 - Need to ensure the Avon River Precinct is accessible for disabled people
 - Accessibility is more than being able to get in the front door – need to be able to access the facilities comfortably as well. E.g, ramps into swimming pools are ideal, and benefit the elderly and parents with young children too.
- Volunteers and teacher aides are under a lot of stress.
- Crucial that disabled people are part of the decisions that affect them.
- An accessible Christchurch is for Every Body Every Where.
- The Forum discussed with the presenters possible ways to encourage early consideration of accessibility in design and construction. The Forum voiced support for the Barrier Free New Zealand Trust to be involved early in the consenting process for new buildings in the Christchurch rebuild. The Forum also suggested that the Trust consider approaching architecture and design schools, and continuing professional education providers for architects.

ACTION: The Forum resolved to advise the Ministers that it strongly endorses and supports the work of the disability sector, including the recommendations in the Earthquake Disability Leadership Group's presentation.

3. Notes Of The Last Meeting

Moved:

That the notes from the meeting of 1 November 2012 were confirmed as accurate records.

Carried

4. Other matters arising

- Chair of the Forum
 - Trevor McIntyre advised that it is necessary for him to step down from his role as Chair of the Forum due to his recent appointment as an executive adviser to the Christchurch Education Renewal Programme.

ACTION: L Smith to email all members seeking expressions of interest for the role as Chair. If more than one expression of interest is received members will conduct a secret ballot at the meeting on Thursday 6 December to confirm the new Chair.

5. Next Meeting – Thursday 6 November 2012, Christchurch Netball Centre

- It was agreed that the agenda for the 6 December meeting will include:
 - Update from CERA on progress on the Christchurch Central Recovery Plan
 - Update from CERA on summer programmes
 - Open Forum discussion

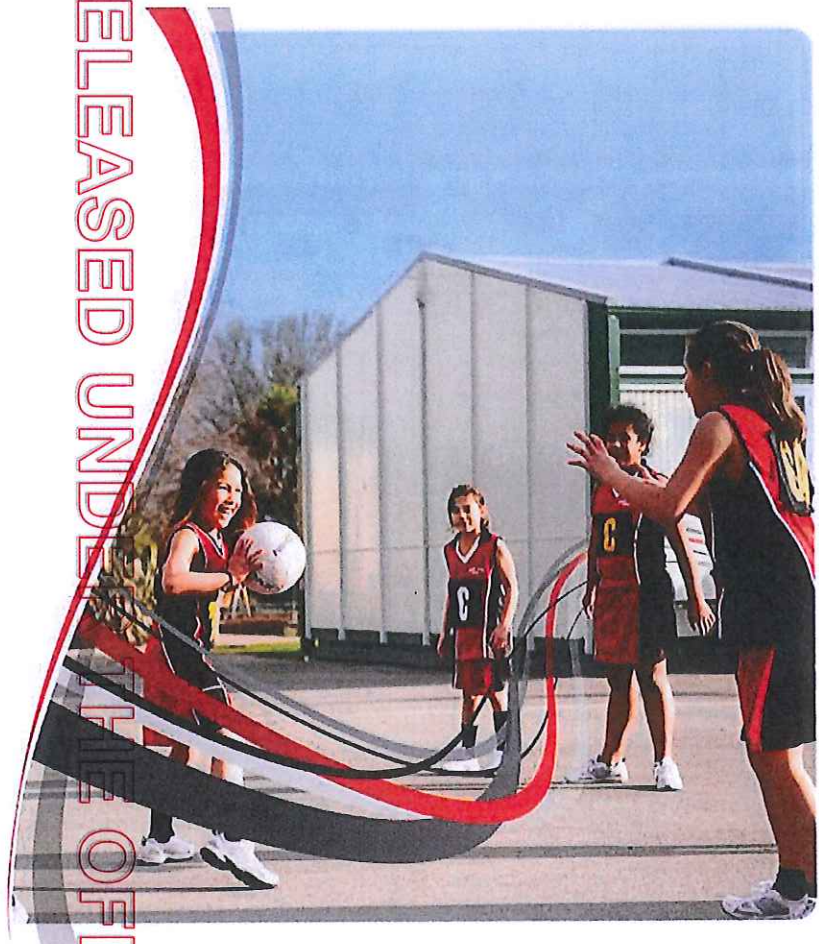
Meeting closed 8.15pm

RELEASED UNDER THE OFFICIAL INFORMATION ACT 1982



MORE
PEOPLE
MORE
ACTIVE
MORE
OFTEN

www.sportcanterbury.org.nz



The State of Sport

Presentation to the
CERA Community Forum

22 November 2012

Lesley Murdoch , Belinda Charteris &
Vaughan Utteridge – EQ Recover Manager

RELEASED UNDER THE OFFICIAL INFORMATION ACT 1982

THE VALUE OF SPORT AND RECREATION

- **Cantabrians are 'into' sport and recreation**
 - play, watch, support, volunteer, coach
- **Sport and recreation makes a significant contribution to the Canterbury economy**
 - employment, construction, consumption
- **Sport and recreation is good for us**
 - less sick days per year, more productive, help prevents premature death
- **Sport and recreation make our communities stronger and more vibrant**
 - social cohesion, working together, building pride
- **Sport and recreation changes peoples lives**
 - opportunity, leadership, goal setting, representation



THE FACTS FOR CANTERBURY

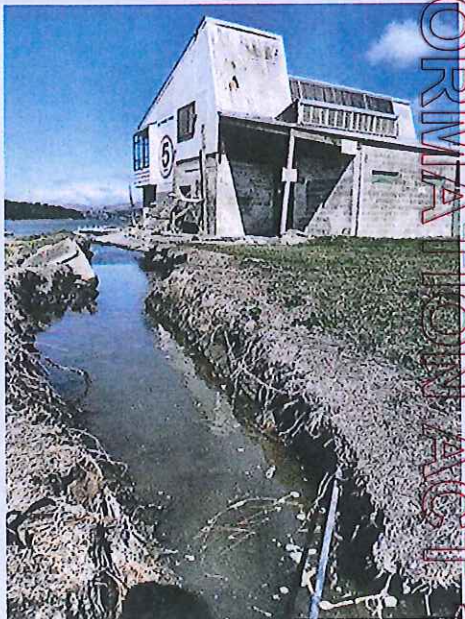
Summary for Greater Christchurch

- 9 out of 10 Cantabrians take part in sport and recreation activity
- Over 125,000 Cantabrians volunteer in sport and recreation activity
- Close to 5,500 Cantabrians work in sport and recreation industries
- Over 3,000 Cantabrians work in sport and recreation occupations
- Sport and recreation contribute in excess of \$550m to Canterbury's economy
- Volunteers contribute 8m+ hours to sport and recreation



EQ IMPACT ON SPORT AND RECREATION

- AMI Stadium
- QEII (Pools, Tracks, Courts, Academy of Sport, Cricket, fields)
- Gym Sports
- Centennial Pool + Aqua Gym + 24 of 45 school pools
- Wilding Park (39 courts) + Porritt Park (Hockey) + Kerrs Reach / Avon River
- Hagley Park Netball Courts
- Tennis and Bowls Clubs lost courts and facilities (over 50% bowls rinks broken)
- Smoke Free Ball Park - Softball
- Canterbury Park and Rugby League Park (all League)
- All Yachting Clubs
- All city based surf sports (water quality)
- Sporting fields (above and below the surface)
- Golf Clubs – five affected
- River and Estuary walkways
- Port hills – walking, jogging, running, biking
- School and community pools



RELEASED UNDER THE OFFICIAL INFORMATION ACT 1982

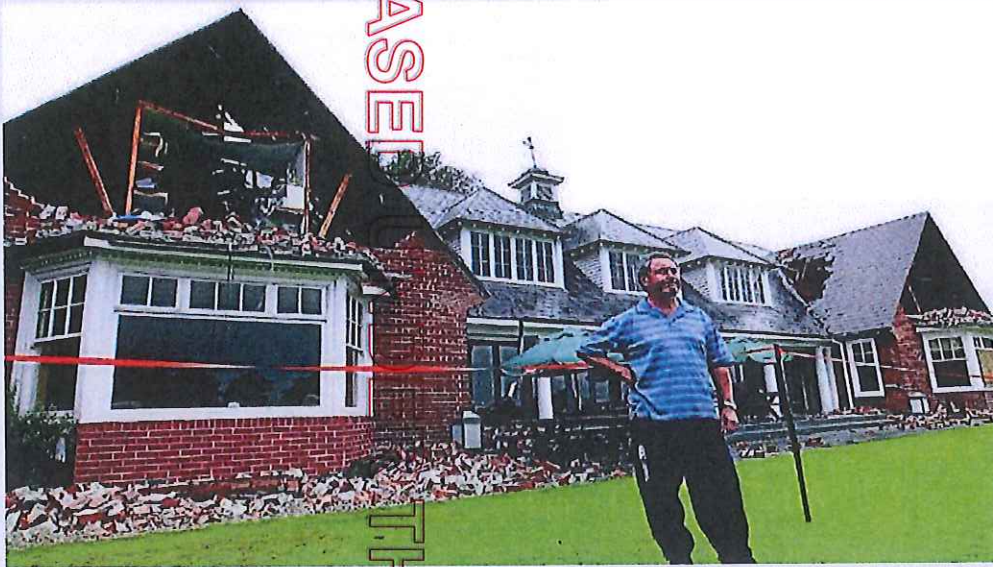
EQ IMPACT ON SPORT AND RECREATION

- **Reduced participation**
 - initial reduction, patterns of participation changing
- **Regional, national and international events lost**
 - swimming nationals, world cup rugby, school championships
- **Increased barriers to participation**
 - Travel time, cost to play
- **Stress on volunteers – coaches and officials**
 - Loss of Key people, less time



RELEASED UNDER THE OFFICIAL INFORMATION ACT 1982

Keeping it Real!



"The main thing is no one was hurt and our plight is nothing compared to what's happening in the CBD,"

Struan Cain, Manager, ChCh Golf Club

The Response

- **Sport was delivered**
 - Amazing creativity and effort in tough environment
 - Events returned and were delivered
- **Investment from Sport NZ**
 - Focus on delivery of sport
- **Innovation and Collaboration**
 - Occurred to ensure delivery happened
- **Sport and Recreation Leadership Group established**
 - Set up to represent the collective needs of the sector

Sport today

- **Membership and Participation slightly down across the board**
 - Facility based sports hardest hit
- **Performance continues to shine at national level**
 - In adversity comes success
- **Events and Facilities coming on board**
 - Coordinated approach from Regional sport
- **Planning and Collaboration continues**
 - Within the sector and with outside the sector
 - Places and Spaces document produced

Participation

- **Overall Membership has recovered close to pre EQ levels**
- **Facility based sports still have challenges**
 - Swimming/Waterpolo
 - Athletics
 - Volleyball
- **Local based competition popular**

Participation Example - Cricket

Challenges

- Garrick Out and now back in
- Clare Park out – hopefully back after Xmas this year
- Porritt Park lost all together
- Barrington two pitches out, one now back
- Barnet out for a while, back now
- Bower was out but back now
- Avondale lost all together
- Heaton Intermediate lost
- Hansen Park out only just back this season
- Halswell School lost all together
- Heathcote domain out only back after Xmas this year
- Kyle Park out since the earthquake only just back, but still damaged
- Linwood Park now has a village on it
- Rawhiti on going issues but in use
- Richmond park has only just come back
- Sydenham Park out but back now
- St Albans park out but back now
- Woolston Park out but back now
- Shirley Boys HS and Shirley Intermediate – One pitch back at SBHS
- Catholic cathedral College out since the earthquake
- Delays in sewage works at Hospital corner due to earthquake – 4 grounds out
- Bradford park out but back now
- Hagley Sports Centre out for hospital parking
- Shirley Primary out since the earthquake

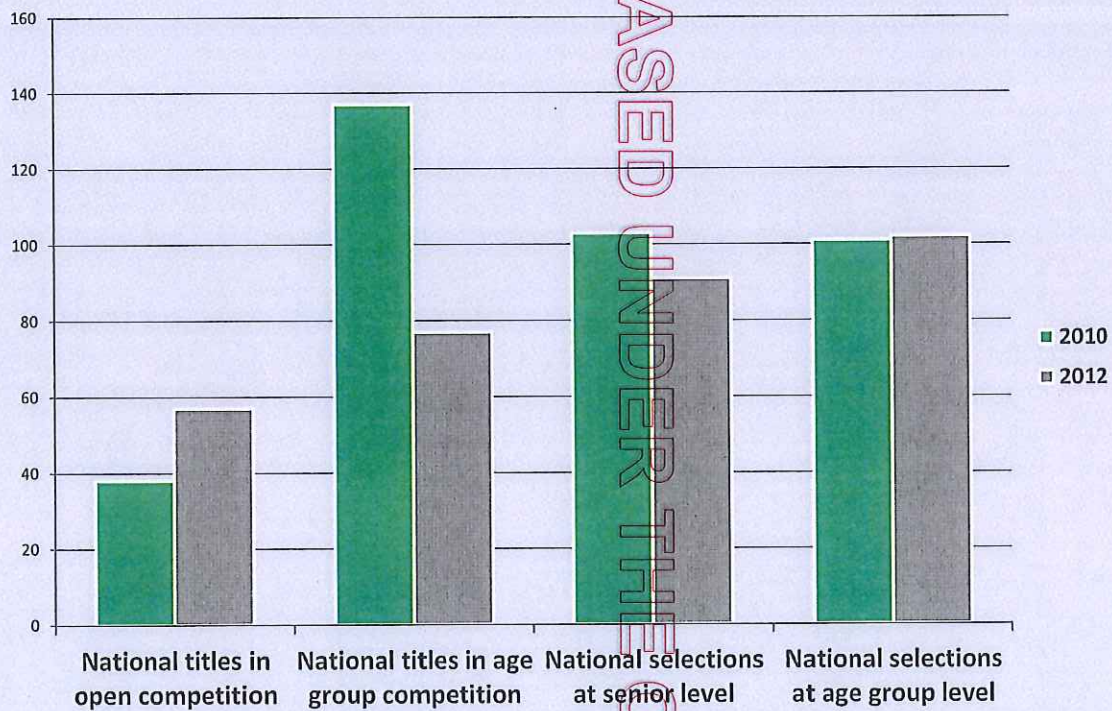
Participation Example - Cricket

Participation Numbers

- **2010/11**
 - 6338
- **2011/12**
 - 5900
- **2012/13**
 - Numbers for the current season are yet to be calculated
 - There has been a small decrease of 1-2% in traditional Saturday numbers

Performance

Comparison 2012 with 2010 (includes 17 sports)



The Future

- **Opportunity**

- Chance to deal with the issues that have been facing sport before the EQ's
 - Capability - Capacity - Resources - Changing Society
 - How to meet the changes of population within Greater ChCh

- **Key Planning Principles**

- Co Location
- Hubbing
- Partnerships

- **Collaboration**

- Within Sport
- Within community

An example of Opportunity



Final Thought

When written in Chinese, the word "crisis" is composed of two characters. One represents danger and the other represents opportunity.

John F. Kennedy



RELEASED UNDER THE OFFICIAL INFORMATION ACT 1982

- For more information please contact:

Vaughan Utteridge

EQ Recovery Manager

M – 0275 521 281

E – vaughan@sportcanterbury.org.nz

RELEASED UNDER THE OFFICIAL INFORMATION ACT 1982

EARTHQUAKE DISABILITY LEADERSHIP GROUP



Presentation to CERA Community Forum

22nd November 2012

Kanohi ki te Kanohi Consultancy

- History
- Partnerships
- Stakeholders
- Recovery programme



Human Rights
Commission
Te Kahui Tiha Tangata



ccs
disability action
Including all people



Kanohi ki te Kanohi Consultancy

Disability Recovery Programme

Outcomes include

- Strong disabled people who are supported during recovery & rebuild
- An effective, innovative and reliable systems response
- Sustainable Economic Development
- Family and Community Building
- An accessible and inclusive Christchurch and Canterbury



Kanohi ki te Kanohi Consultancy

Principles

- Disability is a part of life
- Disabled people are New Zealand citizens and have the same rights as other New Zealanders
- Families function best as a unit
- Disabled people and families are safest and able to reach their full potential when they have strong relationships with people who are not paid

Kanohi ki te Kanohi Consultancy

Access



- Accessible Christchurch, Every Body: Every Where
- Best practice
- Updated *NZS4121:2001 Design for Access and Mobility - Buildings and Associated Facilities*
- Build it right, now

Kanohi ki te Kanohi Consultancy

Sport, Recreation and Inclusion

- Sport and recreation is important to all Cantabrians
- We lost many sports facilities e.g. QEII
- Built space – metro sports facility
- Open space – The Frame and Avon River park
- Access is more than being able to get into the facility it is about being able to use the facility



Kanohi ki te Kanohi Consultancy



Nothing About Us Without Us

- Article 4.3 Of the Convention on the Rights of Persons with Disabilities
- We are the experts on our issues
- It's about being part of the decisions that affect us
- Disabled Persons Organisations like DPA are organisations governed by disabled people

Kanohi ki te Kanohi Consultancy

What the CERA Community Forum can do

- Advise the Minister that an Accessible Christchurch is for Every Body Every Where
- Take part in the Lifemark flash mob [web link](#)
- "Like" the Accessible Christchurch Facebook page
- Including us as neighbours, committee members, volunteers, workers and colleagues in the rebuild and beyond

Kanohi ki te Kanohi Consultancy