

Community Forum
Private Bag 4999
Christchurch 8140

**Meeting notes for the meeting of the CERA Community Forum
Thursday 18 April 2013, 6.00pm
Canterbury Club, Durham St North**

Present:

Community Forum members:

Lynne Ball, Joseph Chamberlain, Belinda Charteris, Weng Kei Chen, Gill Cox, Leanne Curtis, Maria Godinet-Watts, Ruth Jones, Tom McBrearty, Lesley Murdoch, Jocelyn Pappriil, Faye Parfitt, John Peet, Bruce Russell, Patricia Siataga, Emma Twaddell, Brian Vecelli, John Wong

Apologies

Richard Ballantyne, Leah Carr, Peter Jenkins, Trevor McIntyre

Hon Amy Adams, Associate Minister for Canterbury Earthquake Recovery

Jane Bryden, Office of the Hon Gerry Brownlee

Chair

Darren Wright

In Attendance

Benesia Smith, Deputy Chief Executive, Corporate and Governance, CERA
Jacinda Lean, General Manager, Office of the Chief Executive, CERA
Amanda Shaw, Senior Advisor, Office of the Chief Executive, CERA

1. Notes Of The Last Meeting

Moved

That the meeting notes from the 21 March 2013 meeting be confirmed as an accurate record.

That the meeting notes from the 4 April 2013 meeting be confirmed as an accurate record.

2. Matters Arising

The Forum requested a report back by email on any feedback from the Associate Minister for Canterbury Earthquake Recovery on the Forum's open discussion with her at the 4 April 2013 meeting.

ACTION:

CERA representative to follow up with the Associate Minister's office and forward any feedback by email prior to the next Forum meeting

3. Discussion of draft Sports and Recreation Recovery Programme

Withheld under section 9(2)(f)(iv)

ACTION:

Members who are interested in being on the sub-group to discuss the draft Sports and Recreation Recovery Programme to email the Chair by the end of Friday 19 April.

Sub-group will meet next week to prepare draft feedback and circulate it to members for comment.

Chair to add a discussion on the Hagley Oval to the Forum's agenda for the next meeting (time permitting).

4. Community Activities

L Curtis outlined concerns about roadblocks for community-led recovery projects:

- Many Canterbury non-profit organisations and community groups have been impeded in their attempts to foster community-led recovery, for example Cancern's Reuse, Recycle, Relocate project; Addington Action; the Sumner Master Plan
- A number of other community and other commercial organisations have not been granted approval to use the Residential Red Zone
- Significant disincentive for people to work in their own community

- Rather than trying to speed up progress on individual projects there needs to be consideration of the system as a whole and how it operates
- There is not enough focus on how the community can lead its own recovery easily, efficiently and cost-effectively.

The Forum noted:

- Many of the issues seem to come down to not having a single portal for community groups who wish to undertake community-led recovery projects to assist them to step through central and local government approval consenting processes.
- Need to contact CERA and Christchurch City Council clearly and pragmatically articulating what the Forum is seeking by way of a solution.

ACTION:

L Curtis to prepare a draft letter, for the Forum to consider, to CERA and the Christchurch City Council regarding community-level recovery projects

5. Christchurch City Council – attendance at the Forum

D Wright proposed that the Forum open a dialogue with the Christchurch City Council and extend an invitation to the Council for a representative (senior but non-political) to attend Forum meetings for agendas that are relevant.

- Council representative could assist with identifying who in their organisation is the contact point for particular matters and also to highlight upcoming work items that could be discussed by the Forum.
- The Forum could also provide advice to the Mayor and CEO which would be copied to all elected members.

ACTION:

The Chair will write to the Minister for Canterbury Earthquake Recovery to inform him that the Christchurch City Council will be invited to nominate a representative to attend Forum meeting in the future.

The Forum's Executive Team will write to the Mayor to extend the invitation.

6. Presentation by Maria Godinet-Watts and Patricia Siataga – Pacific Island community in the recovery

- Pacific population has been in Canterbury for over 100 years.
- Particular features of the Pacific community:
 - Older migrant group who have lived in NZ for over 20 years
 - Mixture of traditional and contemporary expression of values through languages and cultures
 - Youthful population
 - Significant proportion are part of the workforce.
- Currently the Canterbury Pacific unemployment rate is lower than the rest of the country. This may be in part due to the Pacific Trade Training Scheme
- Pacific peoples are keen to capitalise on the strengths that are ours – cultural heritage, languages, dance, community celebrations, churches and other buildings

CERA Community Forum

Meeting Notes

18 April 2013

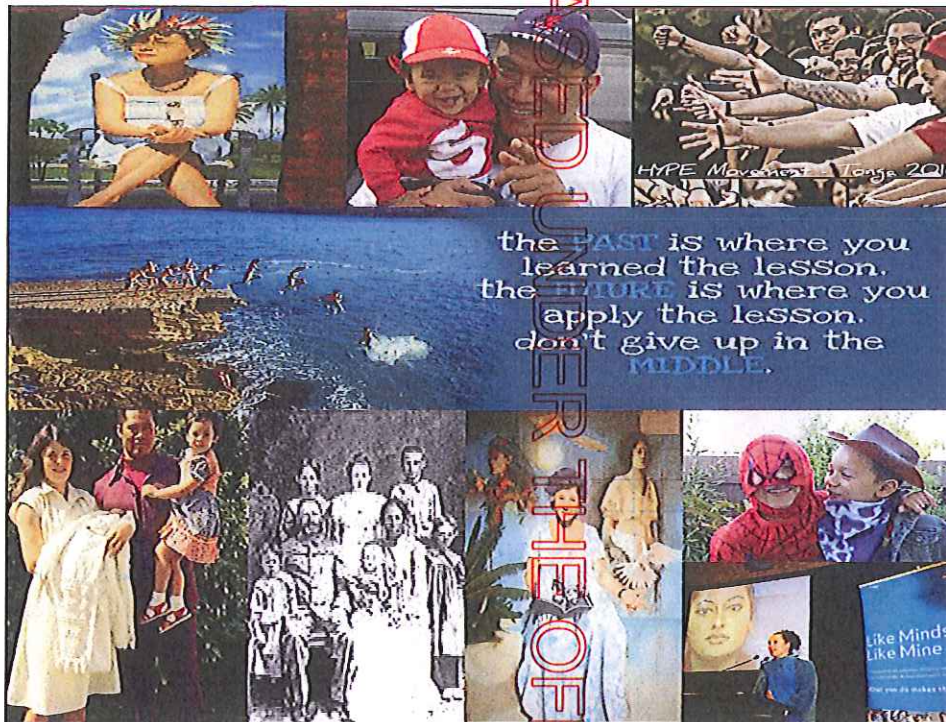
- The Pacific Recovery Action Plan is being developed independently but using the framework of the Recovery Strategy
- The long-term goal is that by 2022 the Pacific communities will have:
 - a Pacific village in Christchurch including a Fale, artistic rebuild, education plan, renewable housing, Pacific trades
 - effective participation of Pacific islanders in their community planning and programmes
 - 85% of 18yr old Pacifika students with NCEA level 2 or equivalent
 - Significant proportion of 25-34yr old Pacifika men and women with advanced trade qualifications, diplomas and degrees.

7. Next Meeting – Thursday 2 May 2013, Canterbury Club, Durham St North

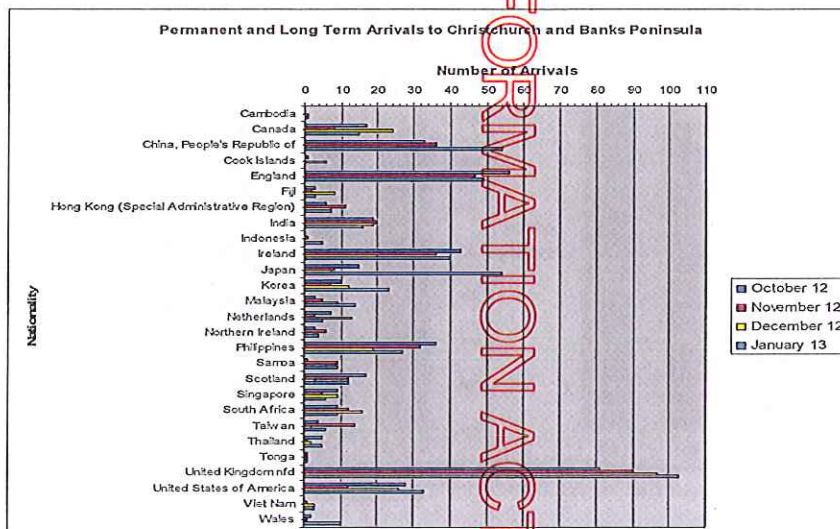
Meeting closed 8.30pm

RELEASED UNDER THE OFFICIAL INFORMATION ACT 1982

RELEASED UNDER THE OFFICIAL INFORMATION ACT 1982

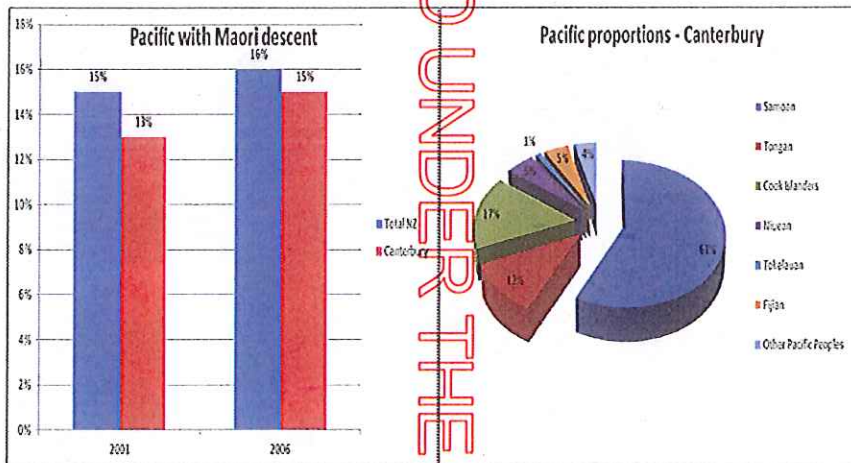


The majority (73%) of NZ born Pacific participants are proud of their ethnic identity & reported that the values of Pacific were important or somewhat important to them.

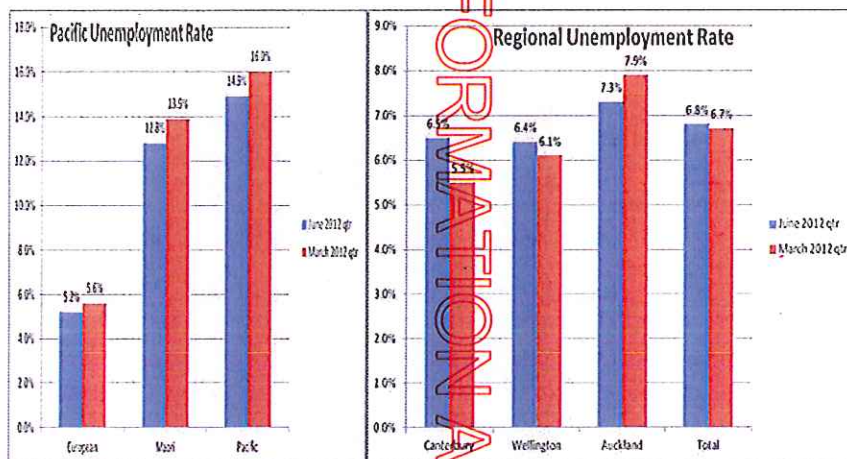


RELEASED UNDER THE OFFICIAL INFORMATION ACT 1982

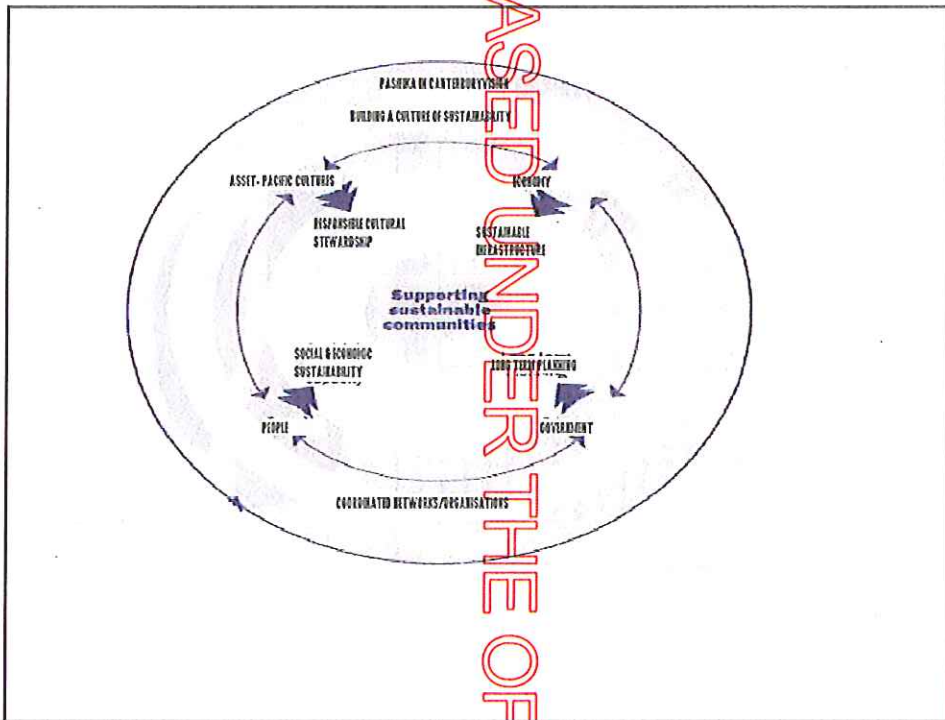
'Pacific communities' includes the island-nation communities, Pan-pacific cross-cultural initiatives, inter-generational/island-born/NZ born specificities.



Stats until June 2012

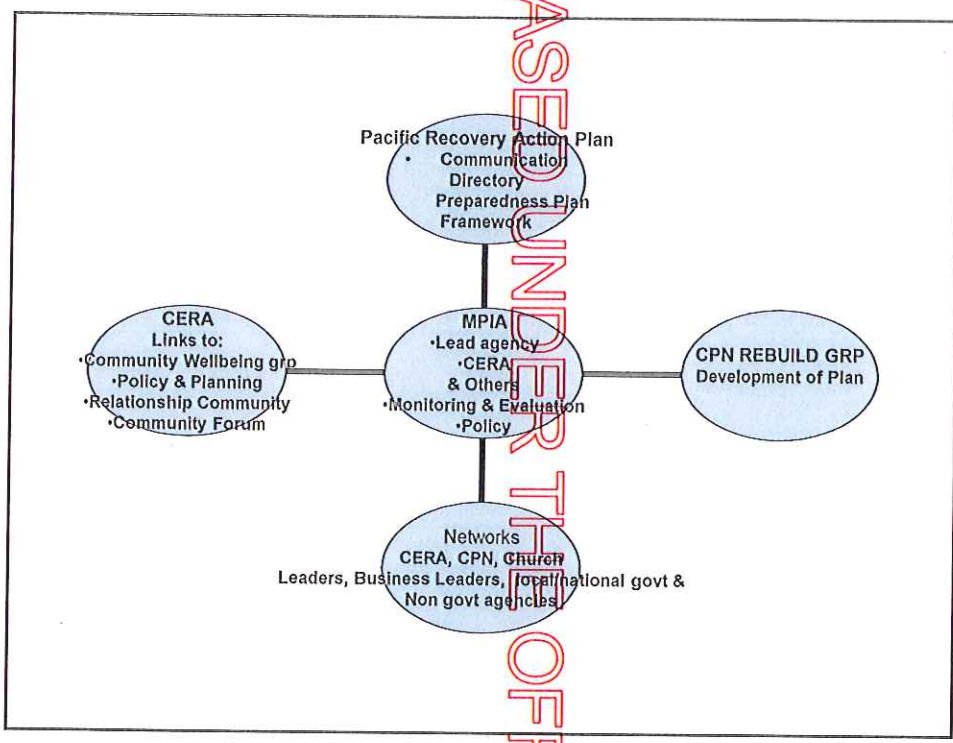


RELEASED UNDER THE OFFICIAL INFORMATION ACT 1982



COMPONENTS OF RECOVERY

CERA Recovery Strategy for Greater Christchurch	RECOVERY THEMES	PRRFT Pacific Recovery Action Plan
Renew greater CHCH unique identity and its vitality expressed through sport, recreation, art, history, heritage & traditions	CULTURAL RECOVERY	<ul style="list-style-type: none"> Pacific Village: <ul style="list-style-type: none"> Language & Culture Meetings and Conferences Uniquely Pacific Venues
CERA, the public & private sector & communities coordinate with each other to contribute to the recovery & future grow of greater CHCH	LEADERSHIP & INTERGRATION	<ul style="list-style-type: none"> Strengthen Pacific Community Groups: <ul style="list-style-type: none"> • Build capacity • Broad community participation
Education, health, & community support services	SOCIAL RECOVERY	<ul style="list-style-type: none"> Participation & Access: <ul style="list-style-type: none"> • Better use of resources • Culturally responsive services • Strong Sound Pacific communities
Investment, businesses, labour, & insurance liaison	ECONOMIC RECOVERY	<ul style="list-style-type: none"> Leadership: <ul style="list-style-type: none"> • Developing & Strengthening Relationships • Supporting Pacific SME's



PAN Pacific

- Action Plan for recovery
- Fale
- Artist Re-Build
- Education Plan/Trade Training
- Pacific Churches

FOUR LONG-TERM COMMITMENT AREAS:

- Long-term planning/coordination
- Sustainable economic infrastructure
- Socio-economic development,
and
- Responsible cultural stewardship