



Office of the Prime Minister's Chief Science Advisor
Kaitohutohu Mātanga Pūtaiao Matua ki te Pirimia

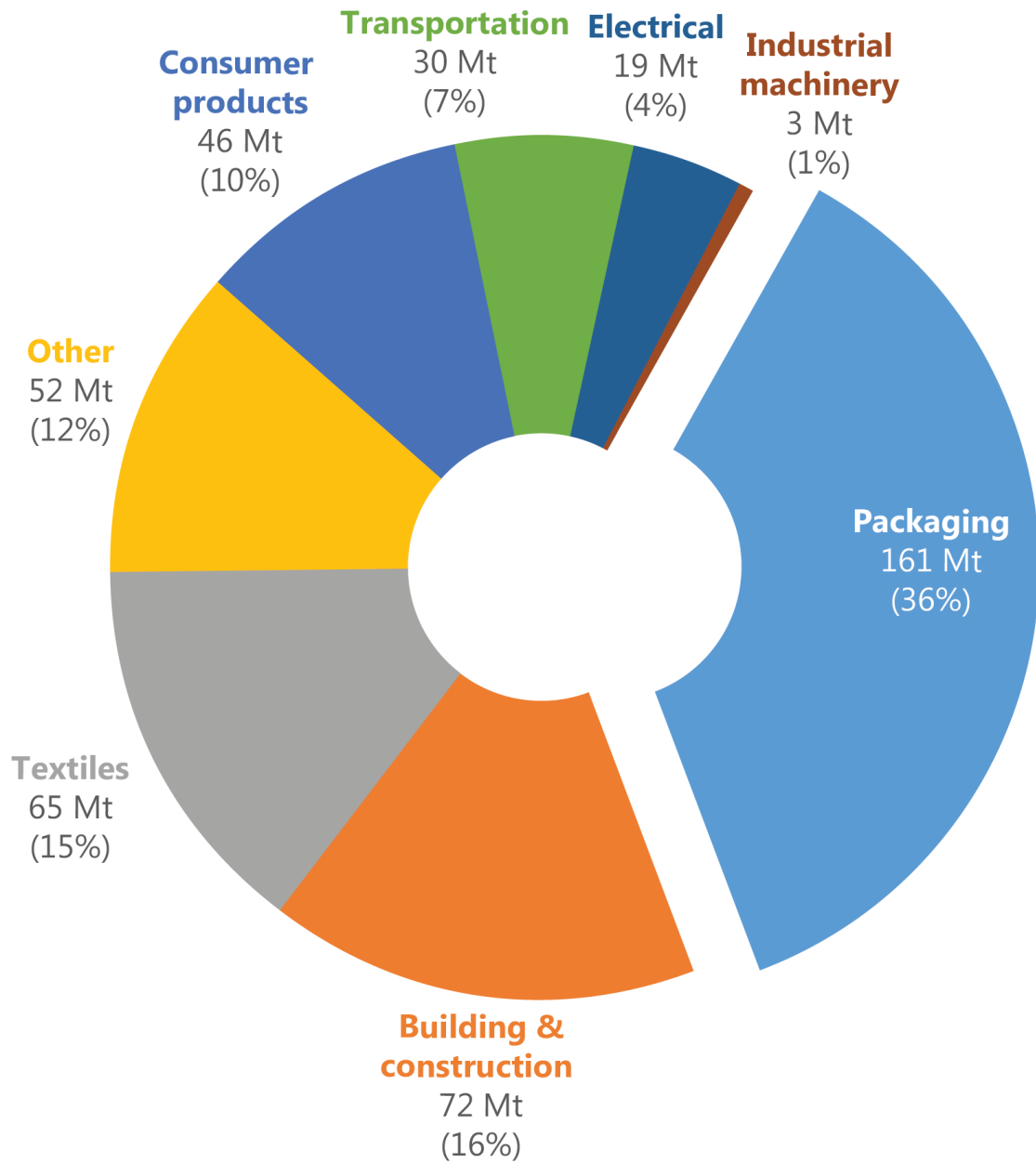
Title:

INFORMATION SHEET: Rethinking Plastics in
Aotearoa New Zealand - Infographics

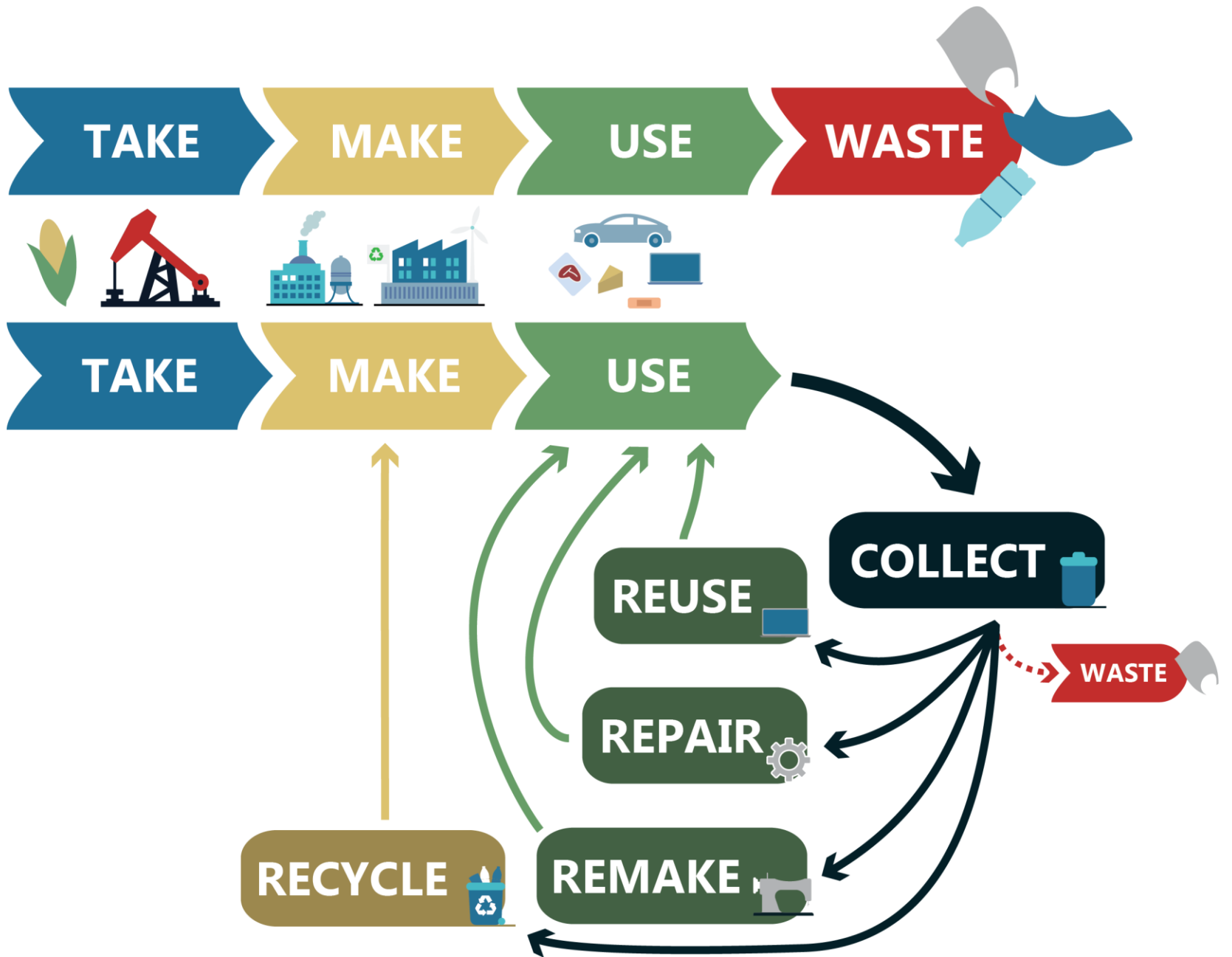
Author:

OPMCSA

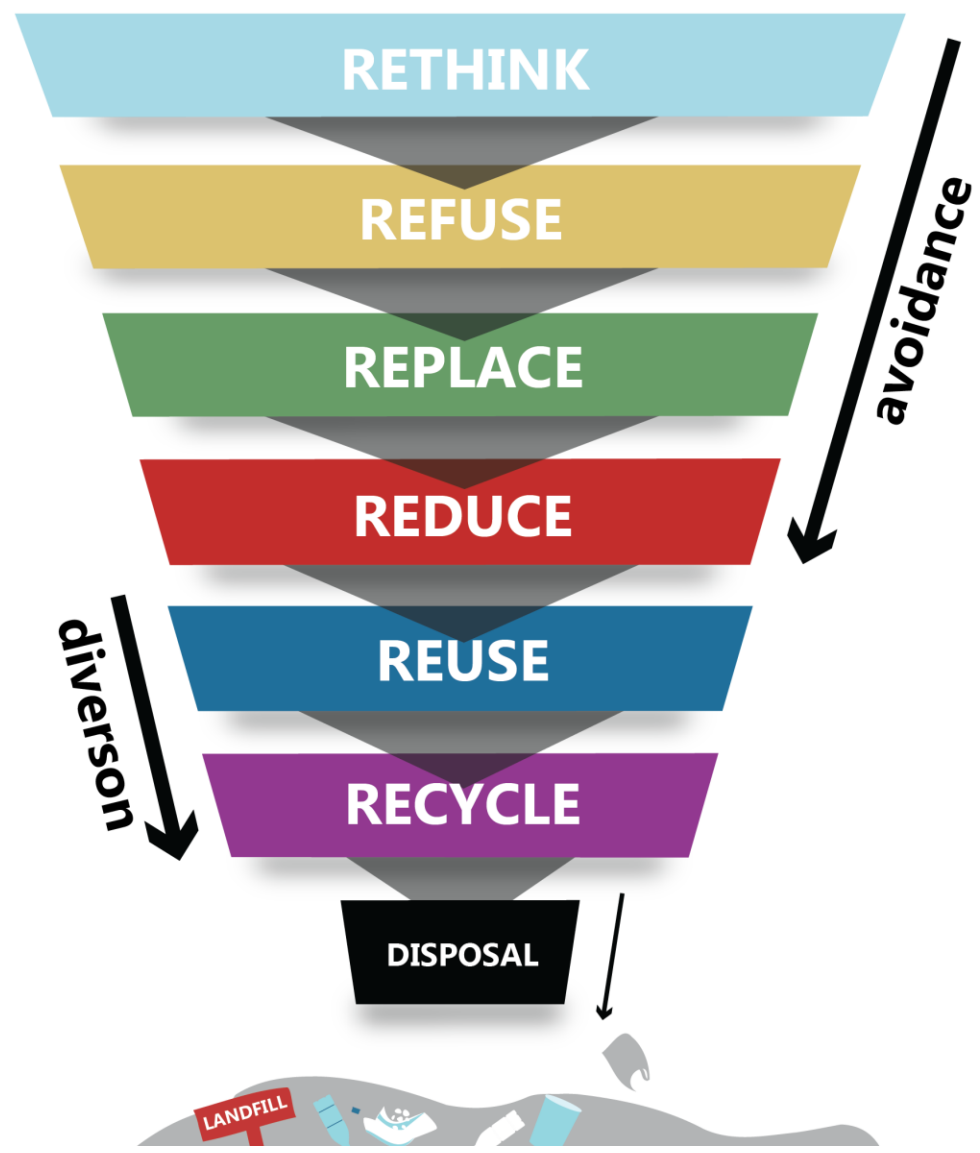
Output type: PowerPoint				
Pages: 19 pp				
Date: Dec-19				
Language: English				
Review: -				
Versions				
<i>Record number:</i>	<i>Version:</i>	<i>Date V1 created:</i>	<i>Date:</i>	<i>Printed version</i>
PMCSA-19-13	V1	08-Dec-19	08-Dec-19	N
Archive page link: https://dpmc.govt.nz/our-programmes/special-programmes/prime-ministers-chief-science-advisor-archives/archive/gerrard-2018-2021				
Notes: -				



36% of plastic produced is packaging, and single-use

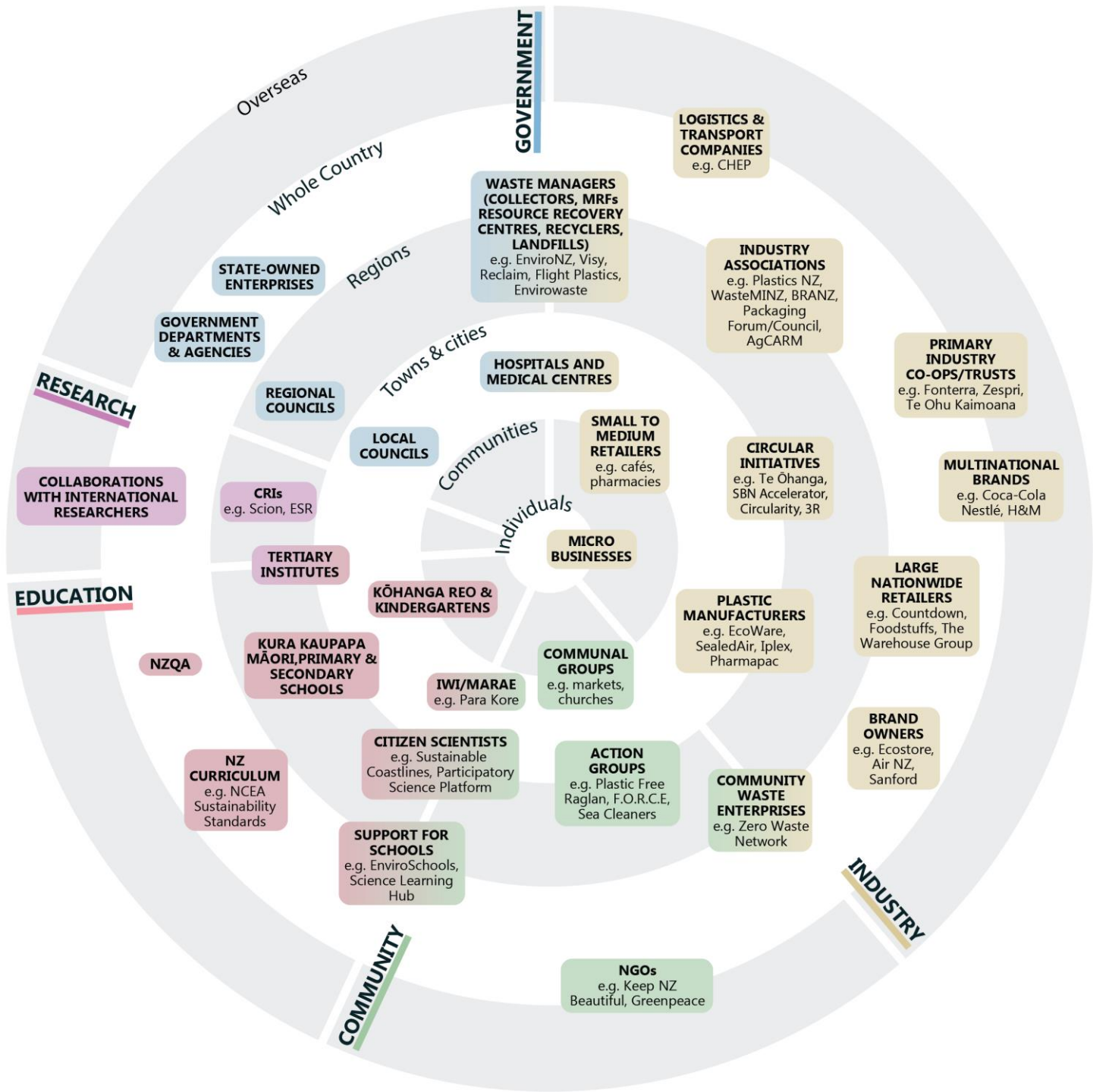


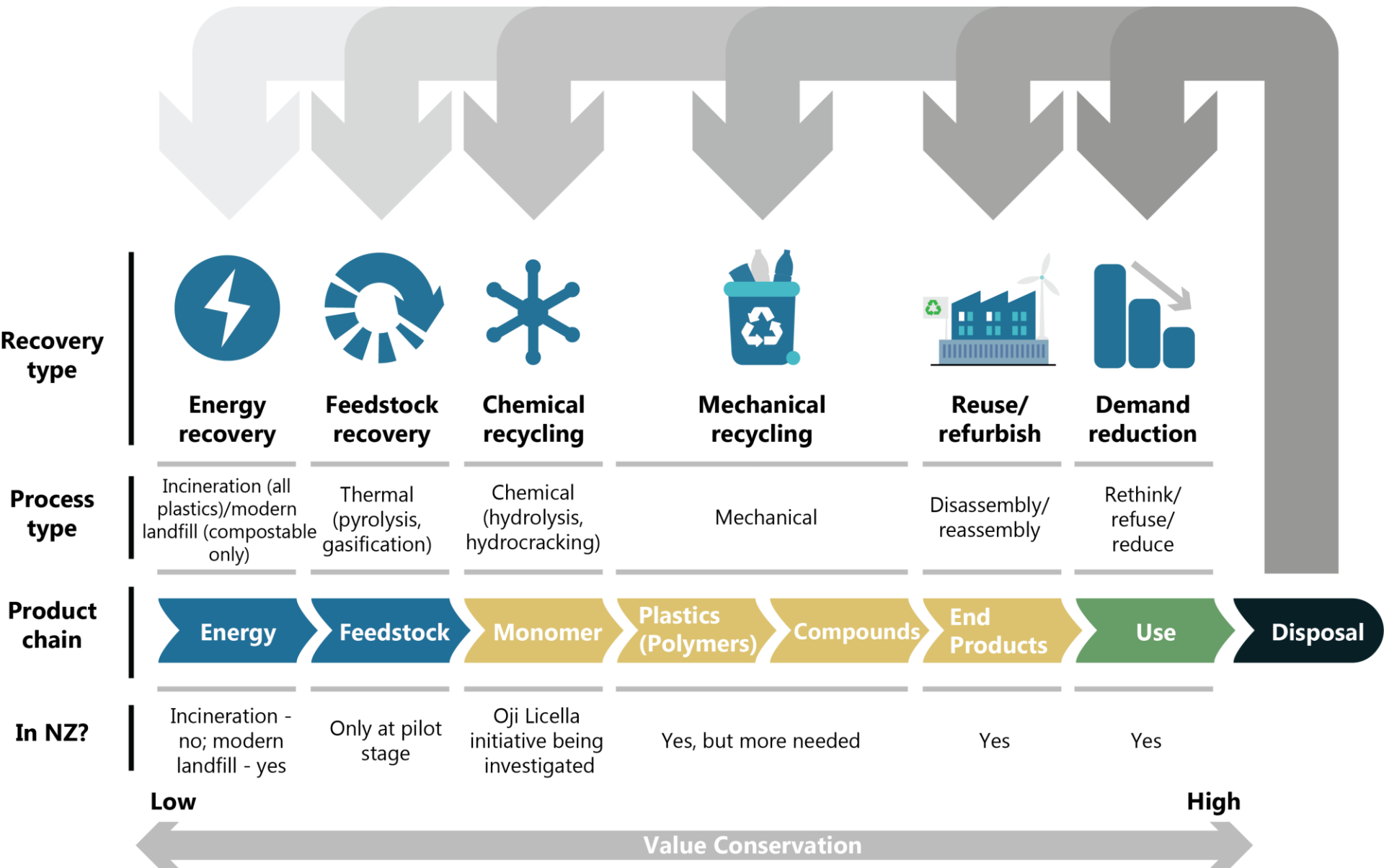
IMPROVED



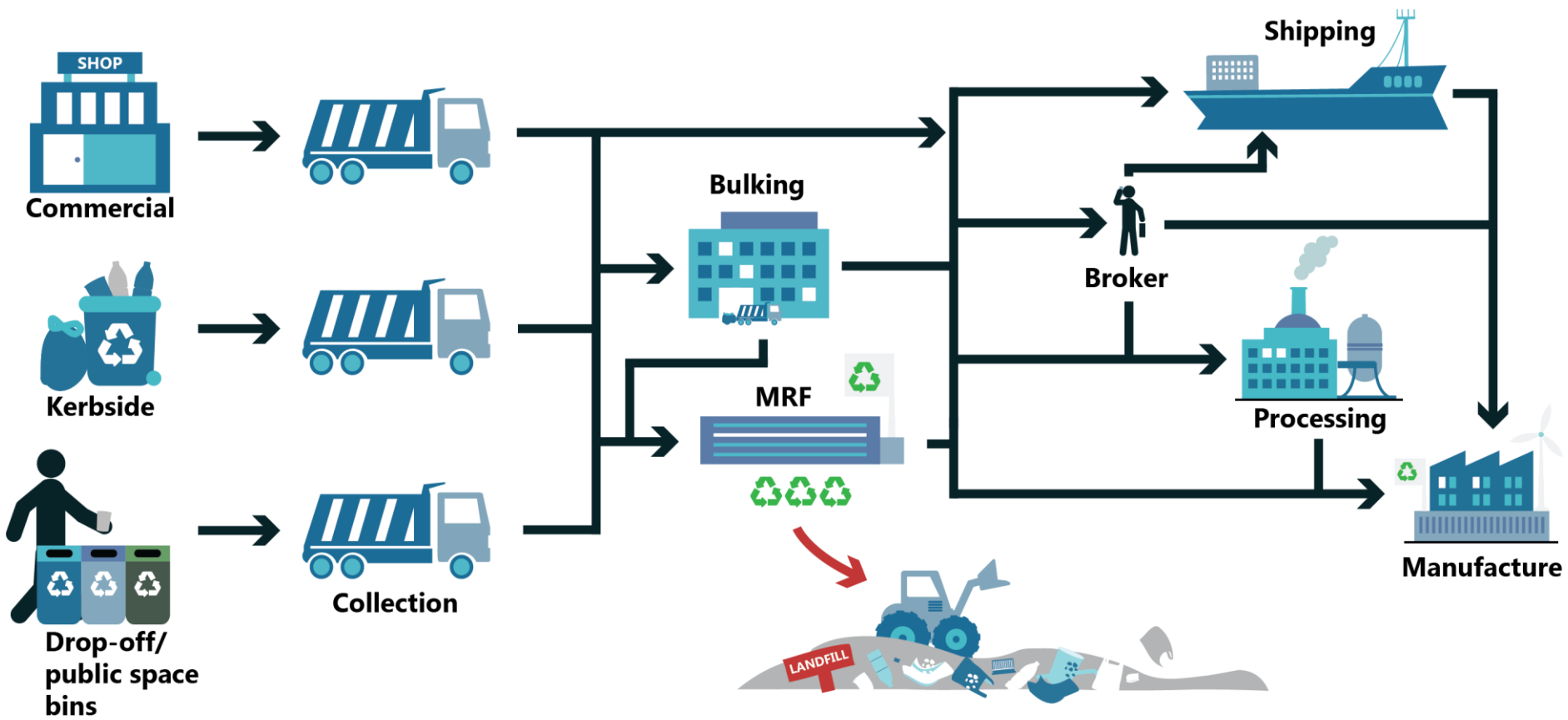
CURRENT

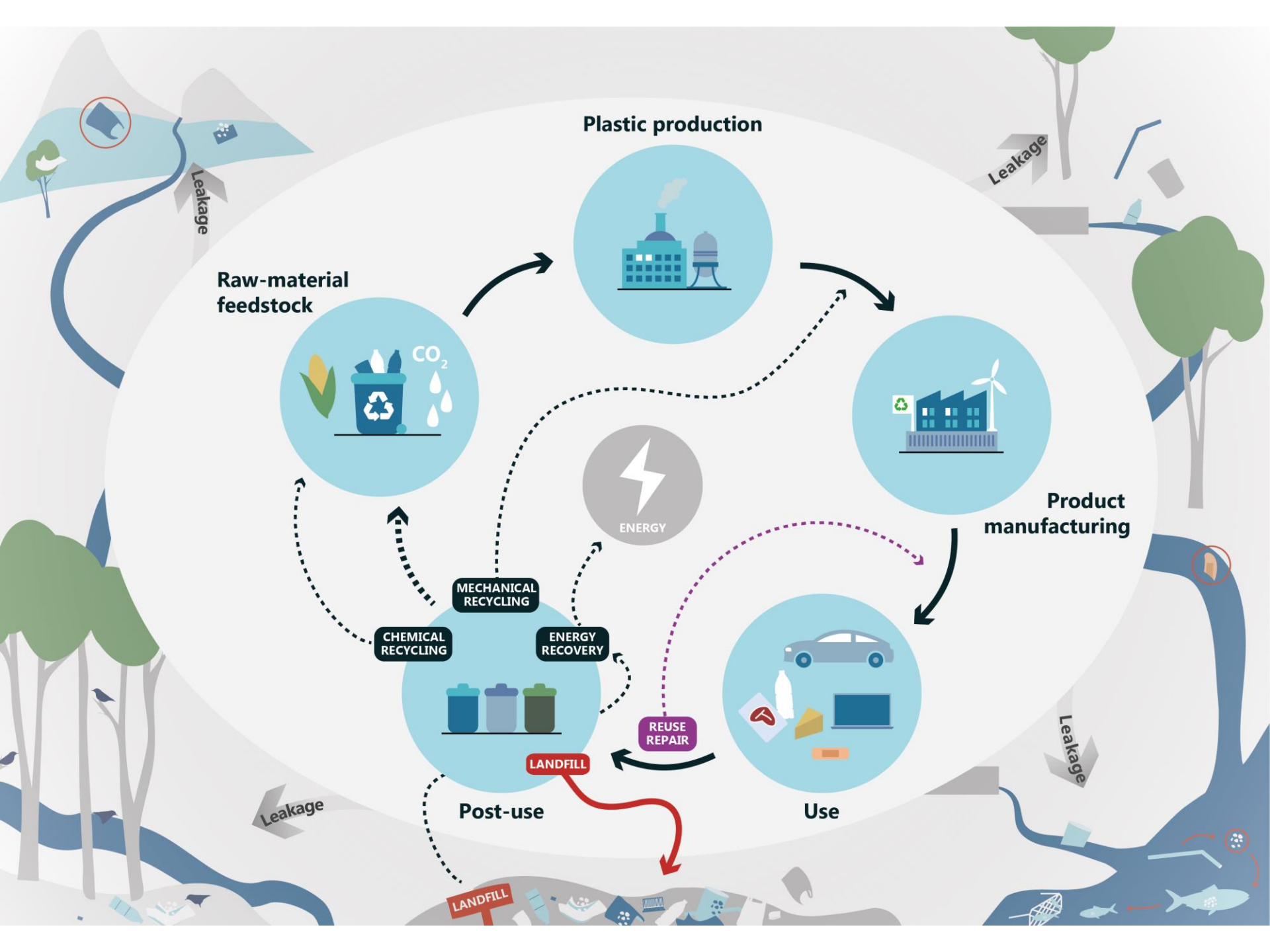






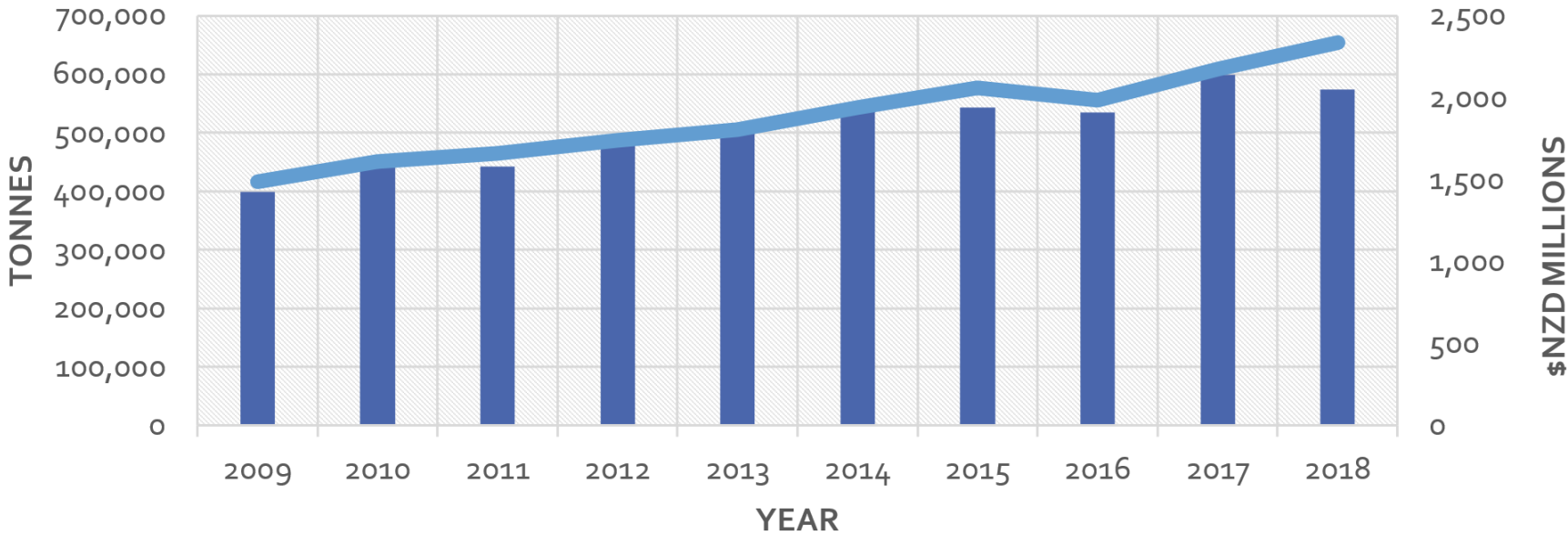




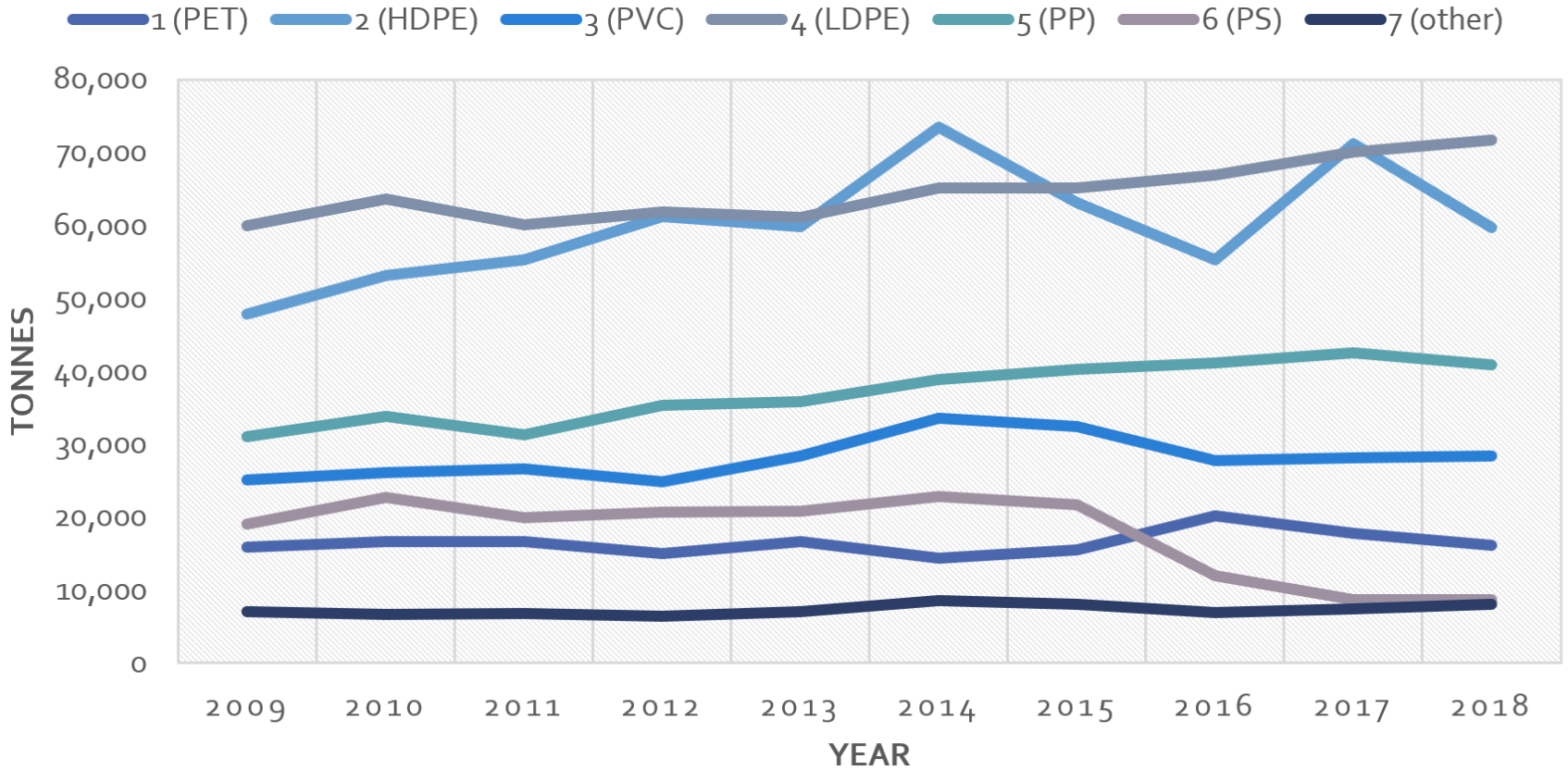


PLASTIC IMPORTS INTO AOTEAROA NEW ZEALAND

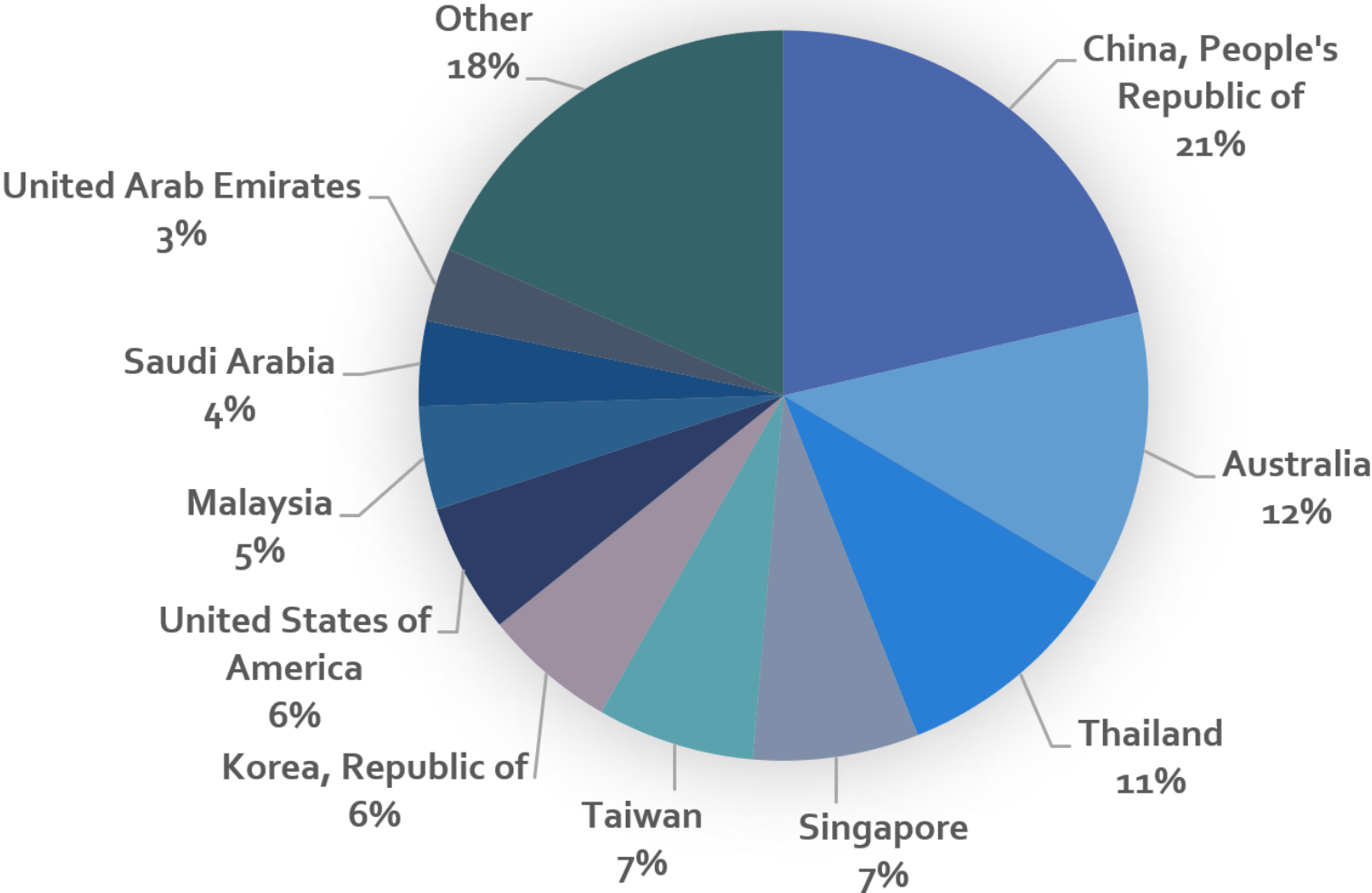
■ TONNES — \$NZD



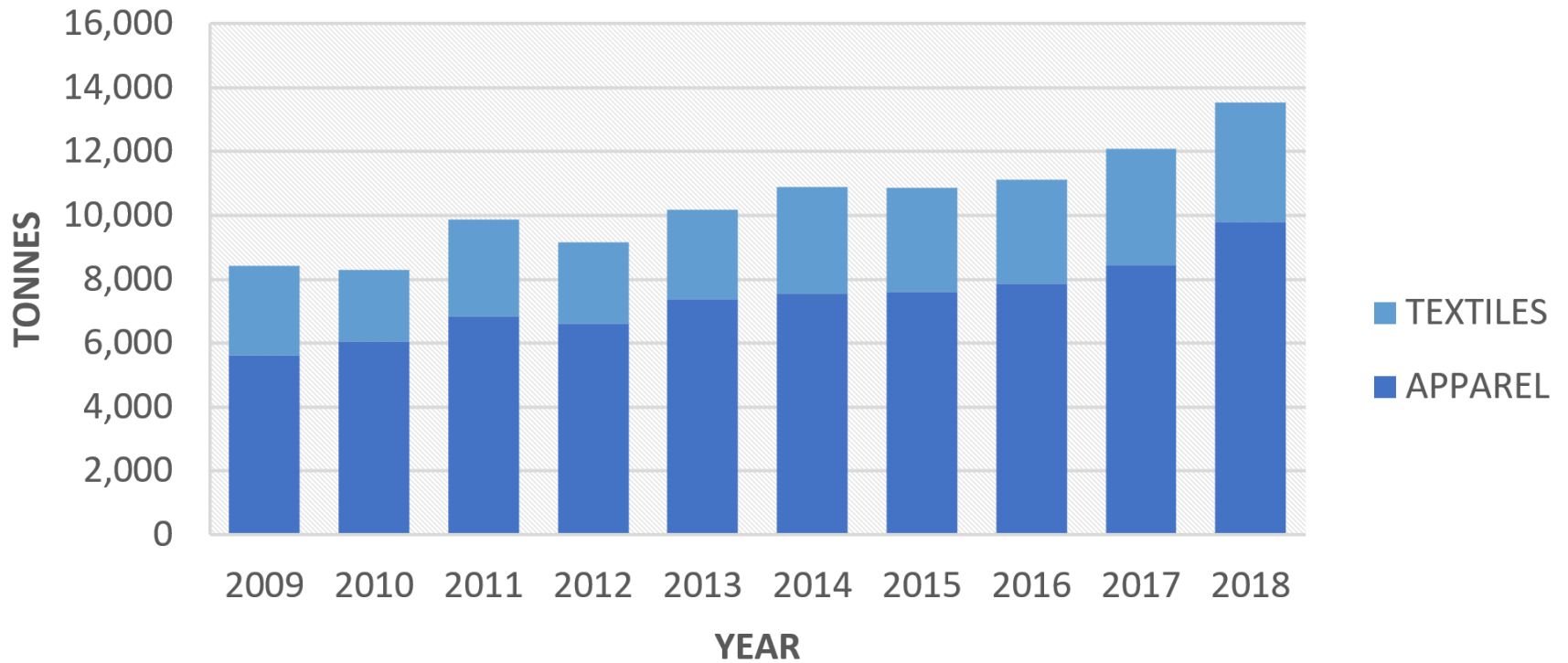
IMPORT VOLUMES FOR RAW RESINS 1-7 TO AOTEAROA NEW ZEALAND



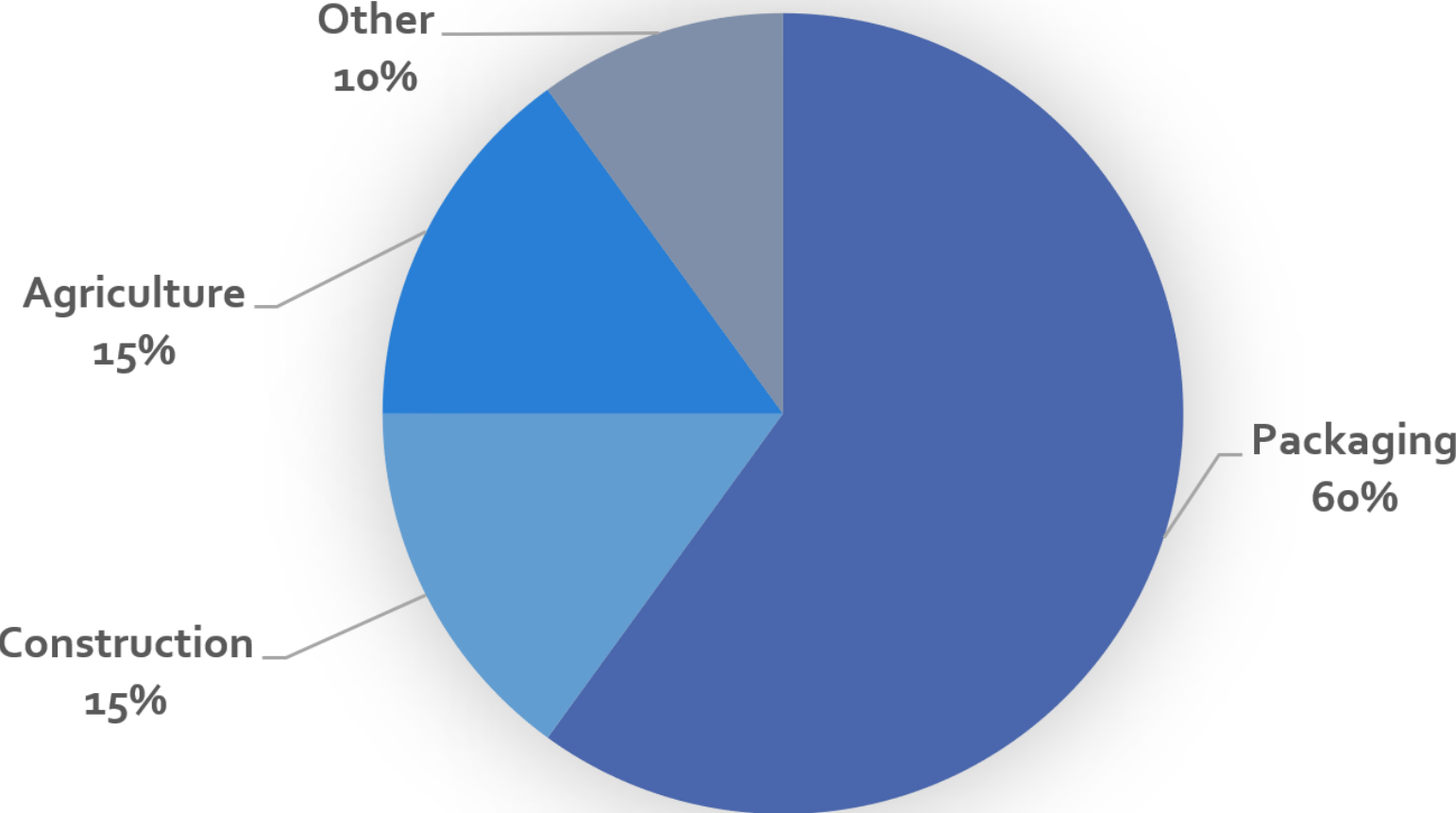
PROPORTION OF PLASTIC RESIN AND PRODUCTS IMPORTED BY ECONOMY



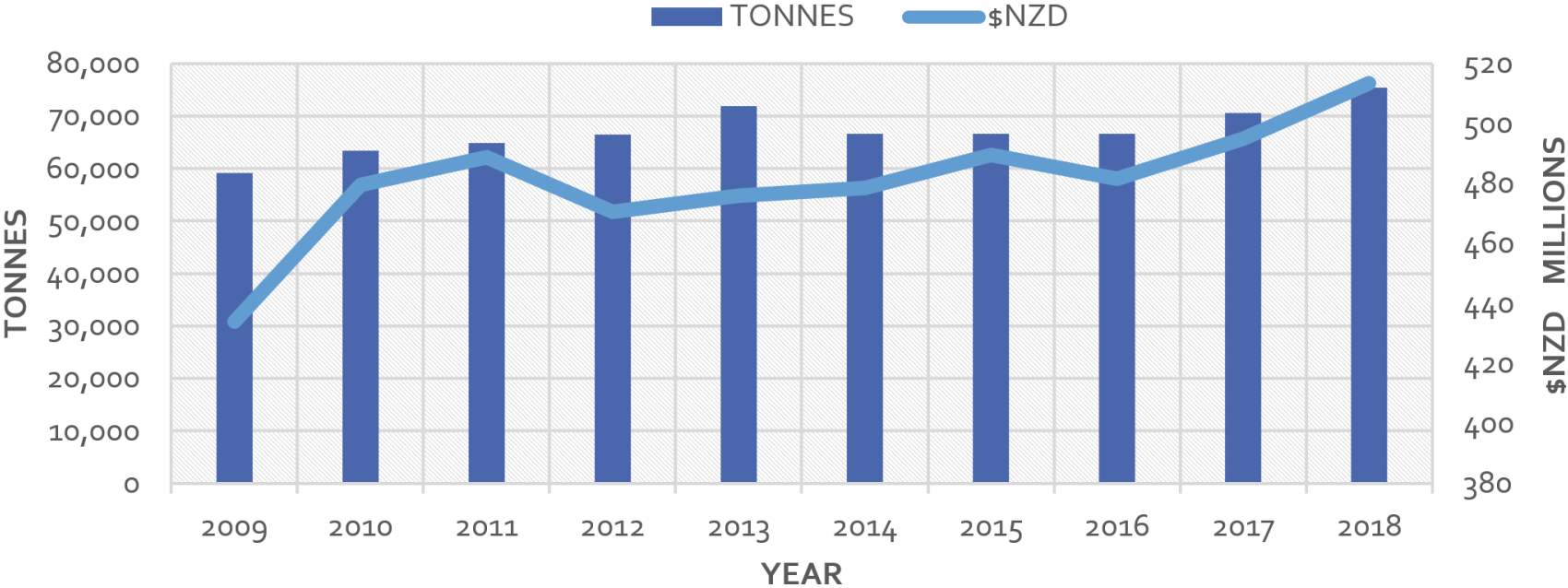
SYNTHETIC TEXTILE IMPORTS



PLASTIC MANUFACTURE BY SECTOR BY WEIGHT

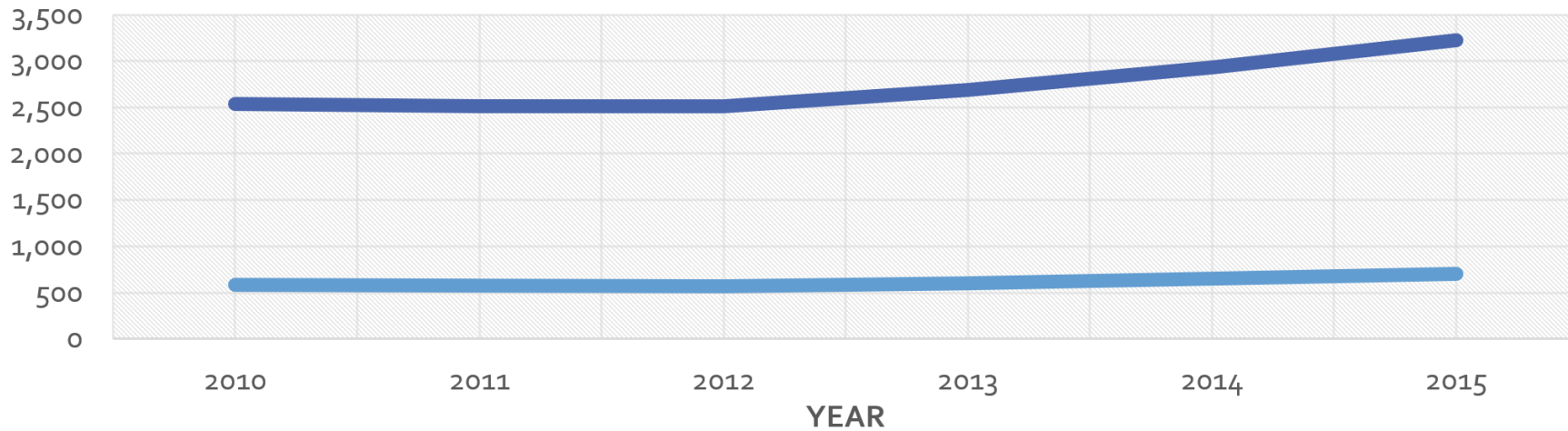


PLASTIC EXPORTS OUT OF AOTEAROA NEW ZEALAND

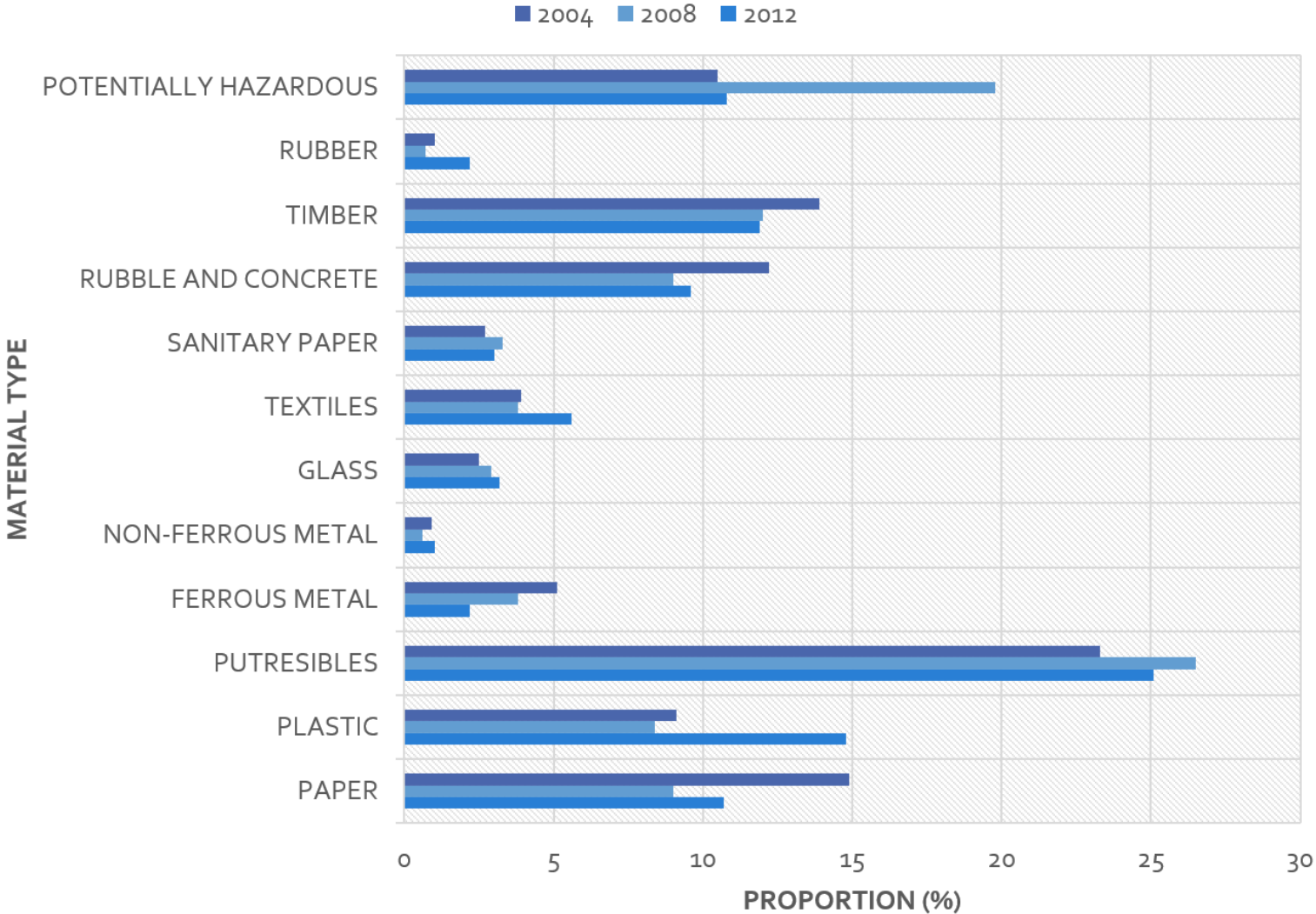


TOTAL AND PER CAPITA WASTE TO MUNICIPAL LANDFILL

— TOTAL AMOUNT OF WASTE (THOUSAND TONNES)
— AMOUNT OF WASTE PER CAPITA (KG)



ESTIMATED WASTE STREAMS AT MUNICIPAL FACILITIES



WASTE COMPOSITION BASED ON COUNCIL DATA

